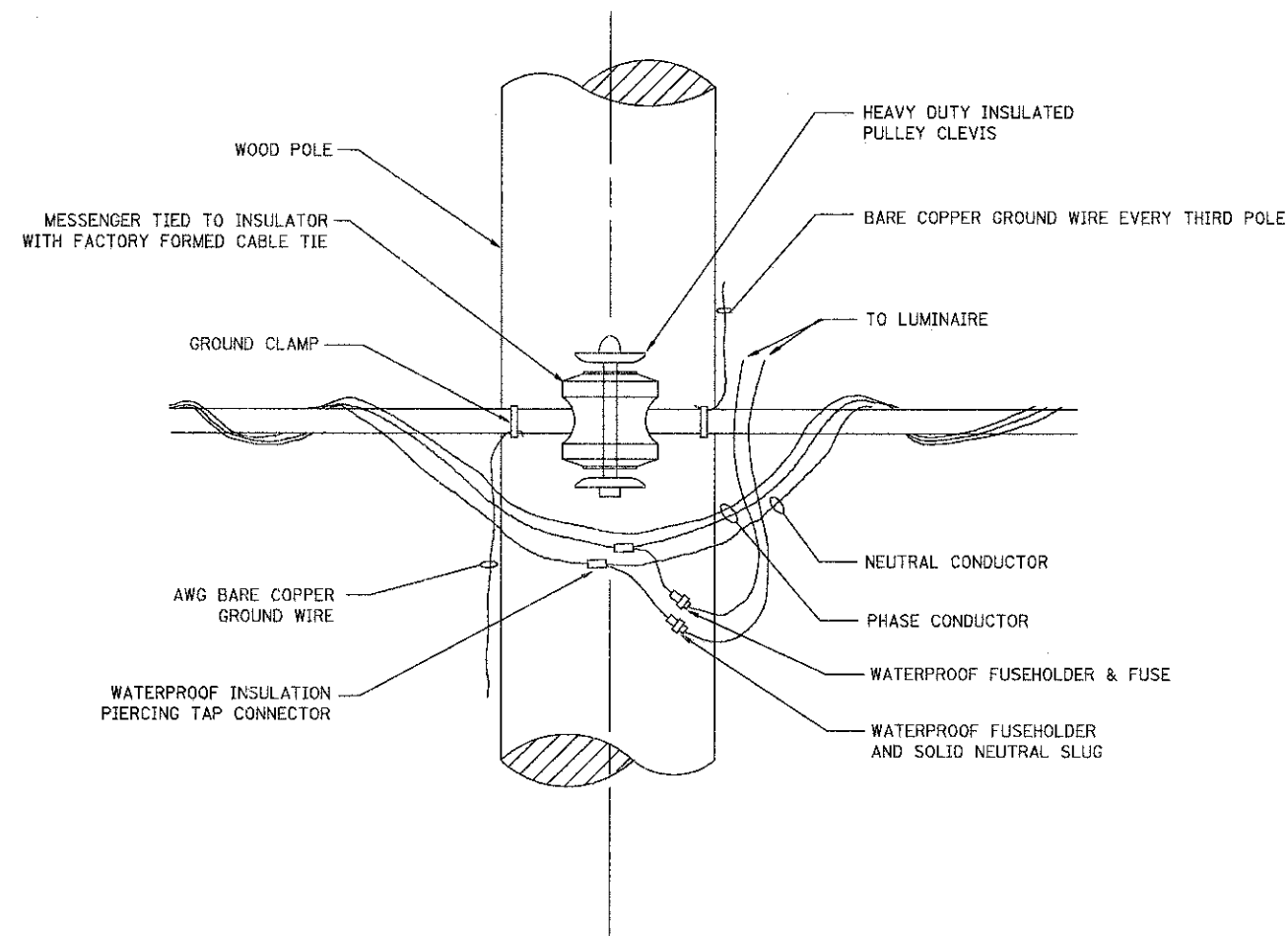


TEMPORARY LIGHT POLE DETAIL

**NOTES:**

1. ALL DIMENSIONS IN INCHES (MILLIMETERS) UNLESS OTHERWISE INDICATED



TEMPORARY LIGHT POLE ATTACHMENT DETAIL

**NOTES:**

- A GROUND ROD SHALL BE INSTALLED AT EVERY TEMPORARY LIGHT POLE.
- THE TEMPORARY LIGHTING SYSTEM IS A SINGLE PHASE 3 WIRE SYSTEM.
- THERE ARE 2 PHASE CONDUCTORS AND A MESSANGER/GROUND CONDUCTOR - NO NEUTRAL CONDUCTOR.
- THE PHASE CONDUCTORS SHALL BE EQUIPPED WITH TWO POLE WATERPROOF FUSEHOLDER WITH 15 AMP FUSES.

FILE NAME = 4459.000-EL2.dwg	USER NAME = ZACH WALLSTEN	DESIGNED -	REVISED - 08-08-03	<b>STATE OF ILLINOIS DEPARTMENT OF TRANSPORTATION</b>	<b>TEMPORARY LIGHT POLE DETAILS</b>			FAP. RTE. 527	SECTION 08-00369-00-SP	COUNTY KANE	TOTAL SHEETS 67	SHEET NO. 50
	PLOT SCALE = 1" = .0833'		REVISED -		SCALE: N.A. SHEET NO. OF SHEETS STA TO STA.			<b>BE-800</b>				
	PLOT DATE = 3/21/2012		REVISED -					CONTRACT #: 63689				

GHA #4459.000

FED. ROAD DIST. NO. 1 ILLINOIS FED. AID PROJECT