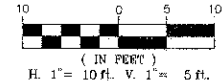
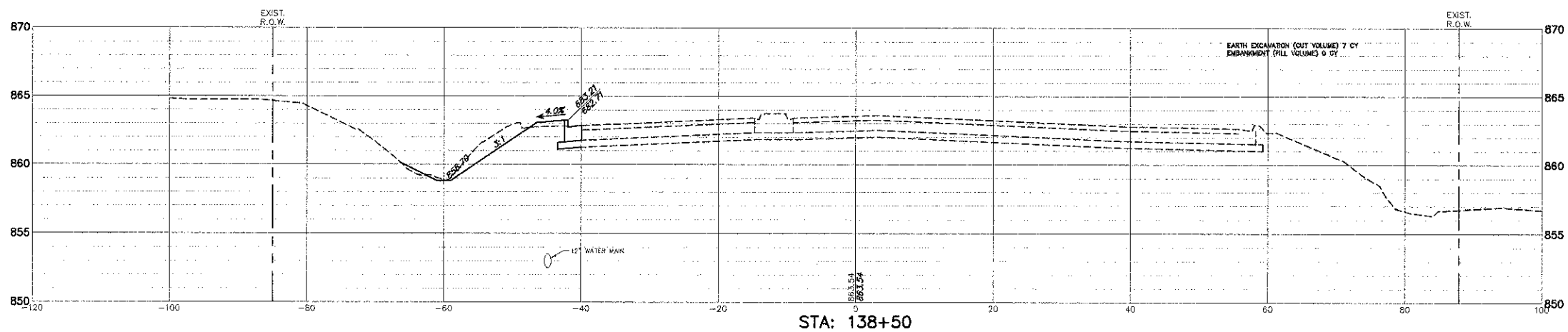
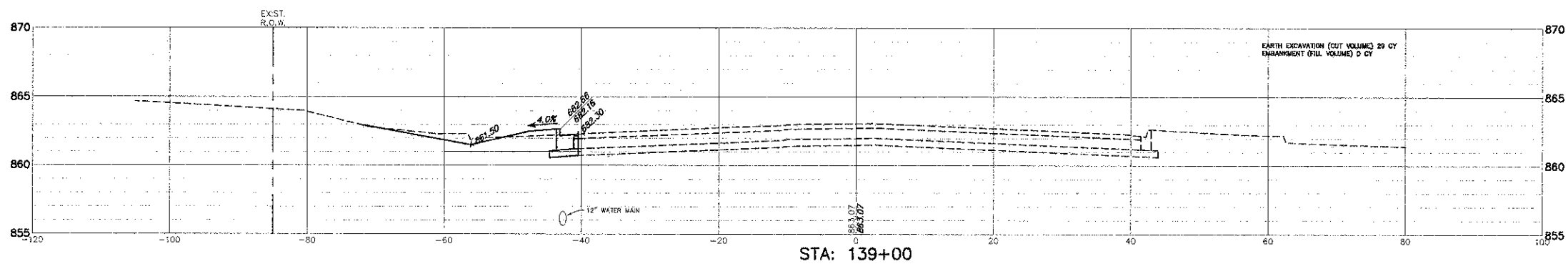
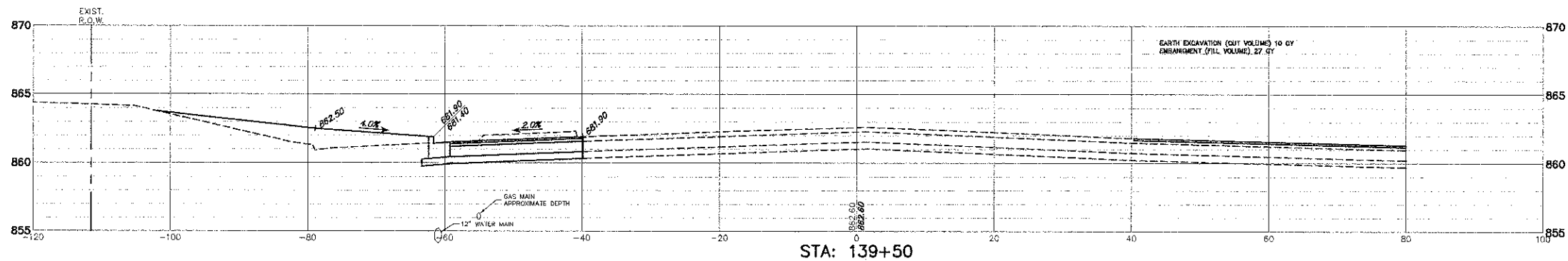


GRAPHIC SCALE



NOTE:
RANDALL ROAD
CROSS SECTIONS ARE FROM THE
NORTH LOOKING TO THE SOUTH



FILE NAME = 4459.000-PR3.dwg	USER NAME = ZACH WALLSTEN	DESIGNED - KLB	REVISED -	STATE OF ILLINOIS DEPARTMENT OF TRANSPORTATION	CROSS SECTIONS RANDALL ROAD STA. 139+50 TO STA. 140+00			F.A.P. RTE.	SECTION	COUNTY	TOTAL SHEETS	SHEET NO.
	PLOT SCALE = 1" = .0833'	CHECKED - KLB	REVISED -					527	08-00369-00-SP	KANE	67	67
PLOT DATE = 3/21/2012	DATE - 3/21/2012	REVISED -	REVISED -	SCALE: 1"=20'			SHEET NO. OF SHEETS	STA. TO STA.	CONTRACT #: 63669			
ILLINOIS FED. AID PROJECT												