

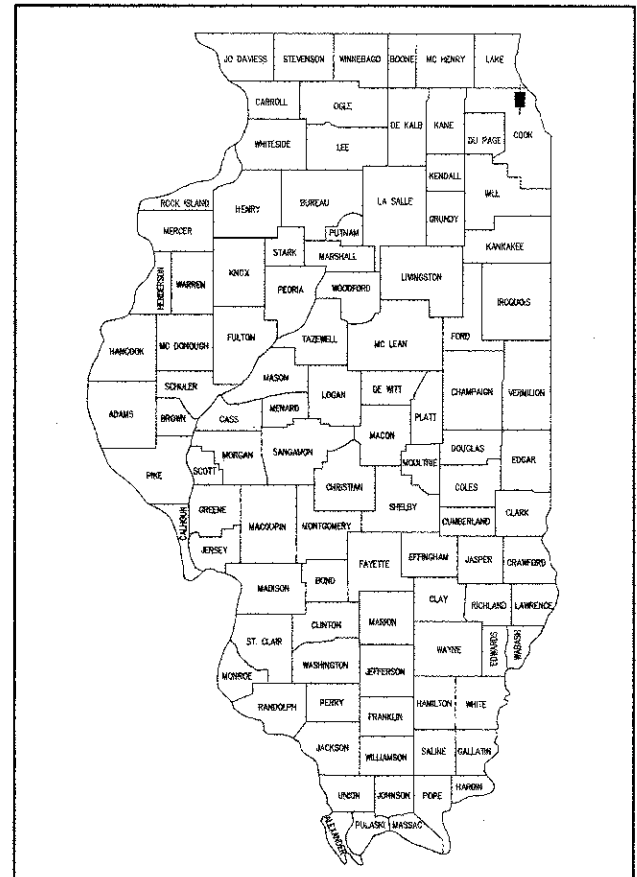
SHEET NO.	INDEX OF SHEETS
1	COVER SHEET, INDEX OF SHEETS & STATE STANDARDS
2	SUMMARY OF QUANTITIES GENERAL NOTES & TYPICAL SECTIONS
2A	SUMMARY OF QUANTITIES
3	EXISTING CONDITIONS - WAGNER ROAD
4	PROPOSED PLAN AND PROFILE - WAGNER ROAD
5	CULVERT REPLACEMENT EXTENSION PLAN - WAGNER ROAD
6	DETOUR PLAN - WAGNER ROAD
7	EROSION AND SEDIMENT CONTROL PLAN - WAGNER ROAD
8	PLAN AND PROFILE - SUNSET RIDGE ROAD
9-10	CROSS-SECTIONS - SUNSET RIDGE ROAD
11-15	DETAILS

STATE OF ILLINOIS
DEPARTMENT OF TRANSPORTATION
DIVISION OF HIGHWAYS
PLANS FOR PROPOSED
FEDERAL AID HIGHWAY
FAU 2777 (SUNSET RIDGE ROAD)
WILLOW ROAD TO MARTIN LANE
SIDEWALK INSTALLATION

WAGNER ROAD
AT CULVERT FOR TRIBUTARY TO CHICAGO RIVER,
NORTH BRANCH, MIDDLE FORK
SIDEWALK AND CULVERT IMPROVEMENTS

SECTION NUMBER: 10-00050-00-SW
PROJECT NO.: SRTS-4009 (028)

VILLAGE OF NORTHFIELD, ILLINOIS
COOK COUNTY
C-40-006-10



LOCATION OF SECTION INDICATED THUS:

DISTRICT DETAILS

TC-10	TRAFFIC CONTROL AND PROTECTION FOR SIDE ROADS AND DRIVEWAYS
TC-13	DISTRICT ONE TYPICAL PAVEMENT MARKINGS
TC-21	DETOUR SIGNING FOR CLOSING STATE HIGHWAYS

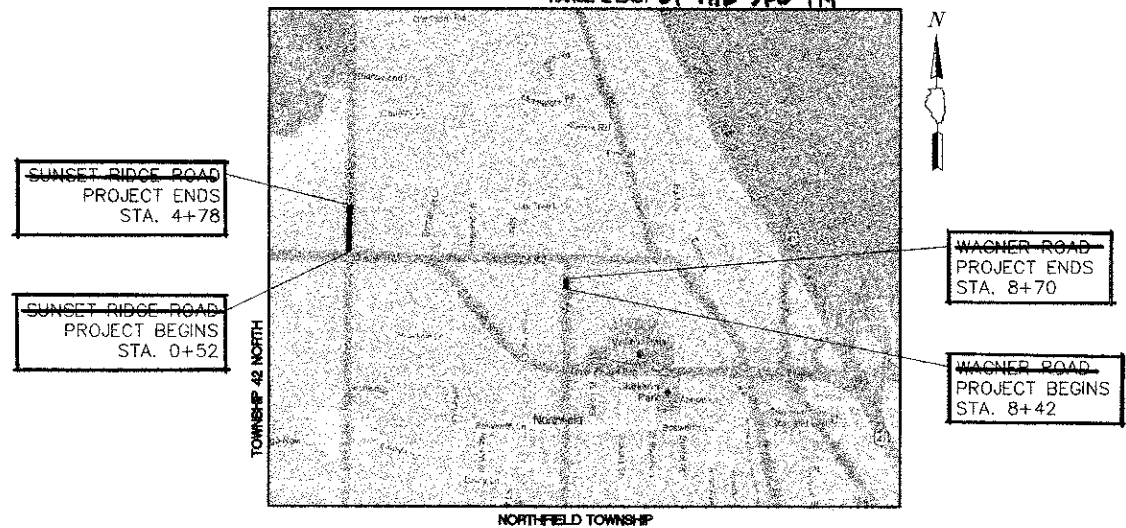
HIGHWAY STANDARDS LIST

000001-06	STANDARD SYMBOLS, ABBREVIATIONS AND PATTERNS
604001-03	FRAMES AND LIDS TYPE 1
606001-04	CONCRETE CURB TYPE B AND COMBINATION CONCRETE CURB AND GUTTER
630101-04	GUARDRAIL MOUNTED ON EXISTING CULVERTS
701001-02	OFF ROAD OPERATIONS, 2L, 2W, MORE THAN 15' AWAY FROM PAVEMENT EDGE
701006-03	OFF ROAD OPERATIONS, 2L, 2W, 15'-24" AWAY FROM PAVEMENT EDGE
701301-04	LANE CLOSURE, 2L, 2W, SHORT TIME OPERATIONS
701501-06	URBAN LANE CLOSURE, 2L, 2W, UNDIVIDED
701801-05	SIDEWALK CORNER OR CROSSWALK CLOSURE
701901-02	TRAFFIC CONTROL DEVICES

DESIGN DESIGNATION:

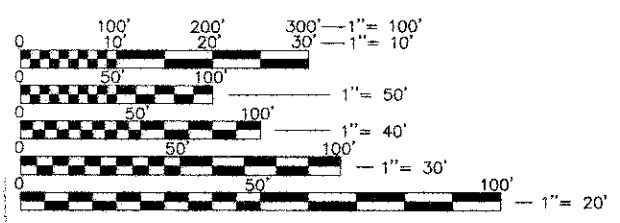
FUNCTIONAL CLASSIFICATIONS	
SUNSET RIDGE ROAD	= COLLECTOR
WAGNER ROAD	= LOCAL STREET
POSTED SPEED LIMIT	
SUNSET RIDGE ROAD	= 35 M.P.H.
WAGNER ROAD	= 20 M.P.H.
DESIGN ADT	
SUNSET RIDGE ROAD	= 8,000
WAGNER ROAD	= 2,400

LOCATION MAP
(NOT TO SCALE)
RANGE 12 EAST OF THE 3RD PM



PROJECT INFORMATION
 SUNSET RIDGE ROAD = 426 FEET (0.081 MI)
 WAGNER ROAD = 28 FEET (0.005 MI)
 TOTAL = 454 FEET (0.086 MI)

FULL SIZE PLANS HAVE BEEN PREPARED USING STANDARD ENGINEERING SCALES. REDUCED SIZED PLANS WILL NOT CONFORM TO STANDARD SCALES. IN MAKING MEASUREMENTS ON REDUCED PLANS, THE BELOW SCALES MAY BE USED.



JULIE
 JOINT UTILITY LOCATION INFORMATION FOR EXCAVATION CALL 811

 Know what's below. Call before you dig.

STATE OF ILLINOIS
 DEPARTMENT OF TRANSPORTATION
 DIVISION OF HIGHWAYS

APPROVED: 2012
 July 16, 2012
 VILLAGE OF NORTHFIELD

APPROVED: 2012
 Phaedra S. Raymond
 SUNSET RIDGE SCHOOL DISTRICT #29

PASSED: 2012
 DISTRICT ONE ENGINEER OF LOCAL ROADS AND STREETS

RELEASED FOR BID BASED ON LIMITED REVIEW: 2012
 John Fortmann
 DEPUTY DIRECTOR OF HIGHWAYS, REGION ONE ENGINEER

PROFESSIONAL ENGINEER'S SIGNATURE & SEAL

7.10.12
 PATRICK J. GLENN DATE
 EXPIRES: NOVEMBER 30, 2013 SEAL

GHA GEWALT HAMILTON ASSOCIATES, INC.
 850 Forest Edge Drive ■ Vernon Hills, IL 60061
 Tel 847.478.9700 ■ Fax 847.478.9701

PRINTED BY THE AUTHORITY OF THE STATE OF ILLINOIS

PROGRAM AND OFFICE ENGINEER: CHARLES F. RIDDLE, P.E. (847) 705-4406 SCHAMBURG, ILL.