

ROUTE MARKERS

FOR U.S. ROUTES
MI-40-2424

FOR ILLINOIS ROUTES
MI-50-2424

R.R. UNMARKED ROUTES
SPECIAL 24" x 18" VARIABLE
4" BLACK LETTERS ON WHITE
REFLECTIVE BACKGROUND

ARROWS SIGNS

M5-1L-2115

M5-1R-2115

M6-1-2115

M6-1-2115

M6-3-2115

CARDINAL DIRECTION & DETOUR SIGNS

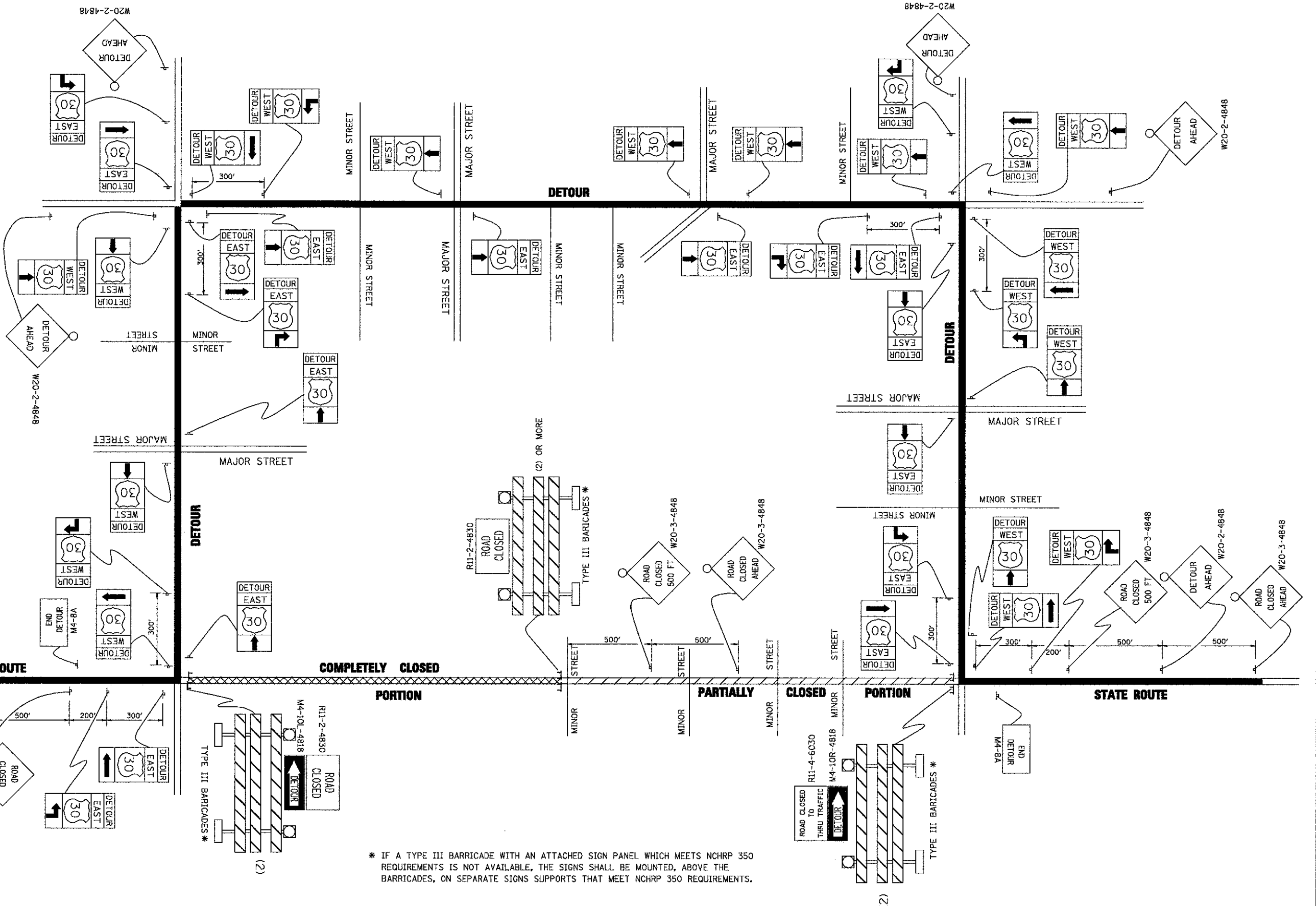
NORTH M3-1-2412

EAST M3-2-2412

SOUTH M3-3-2412

WEST M3-4-2412

DETOUR M4-8-2412



* IF A TYPE III BARRICADE WITH AN ATTACHED SIGN PANEL WHICH MEETS NCHRP 350 REQUIREMENTS IS NOT AVAILABLE, THE SIGNS SHALL BE MOUNTED, ABOVE THE BARRICADES, ON SEPARATE SIGNS SUPPORTS THAT MEET NCHRP 350 REQUIREMENTS.

FILE NAME = 3509.213-071.dwg

USER NAME = BRIAN WESOLOWSKI

DESIGNED -

DRAWN -

CHECKED -

DATE -

PLOT SCALE = 1" = .0633'

PLOT DATE = 6/22/2012

DESIGNED -

DRAWN -

CHECKED -

DATE -

REVISED - 10-18-02

REVISED - R. BORO 9-14-09

REVISED -

REVISED -

**STATE OF ILLINOIS
DEPARTMENT OF TRANSPORTATION**

**DETOUR SIGNING
FOR CLOSING STATE HIGHWAYS**

SCALE: NONE SHEET NO. OF SHEETS STA. TO STA.

F.A.P. RTE	SECTION	COUNTY	TOTAL SHEETS	SHEET NO.
2777	10-0050-00-SW	COOK	15	15
TC-21			CONTRACT # 63729	
<small>FED. ROAD DIST. NO. 1 ILLINOIS FED. AID PROJECT</small>				

GHA #3509.214