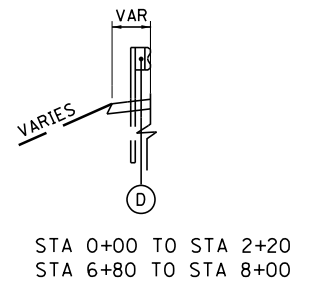


\* HMA OVERLAY BEGINS ± STA 1+50

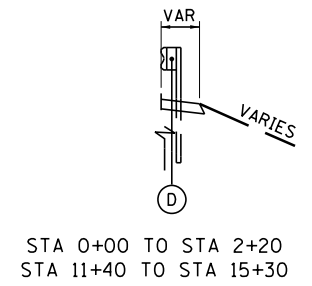
**EXISTING TYPICAL SECTION**  
**I-155** (C)

NB I-155  
STA 0+00.00 TO STA 12+48.00

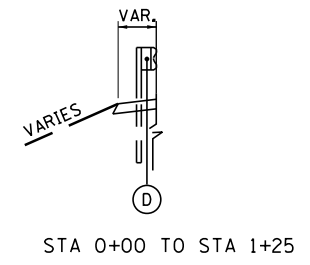
SB I-155  
STA 0+00.00 TO STA 2+20.00



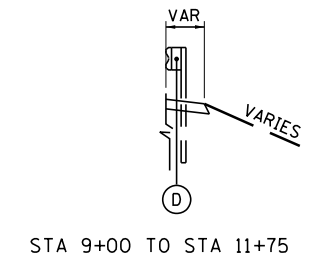
**DETAIL A**



**DETAIL B**



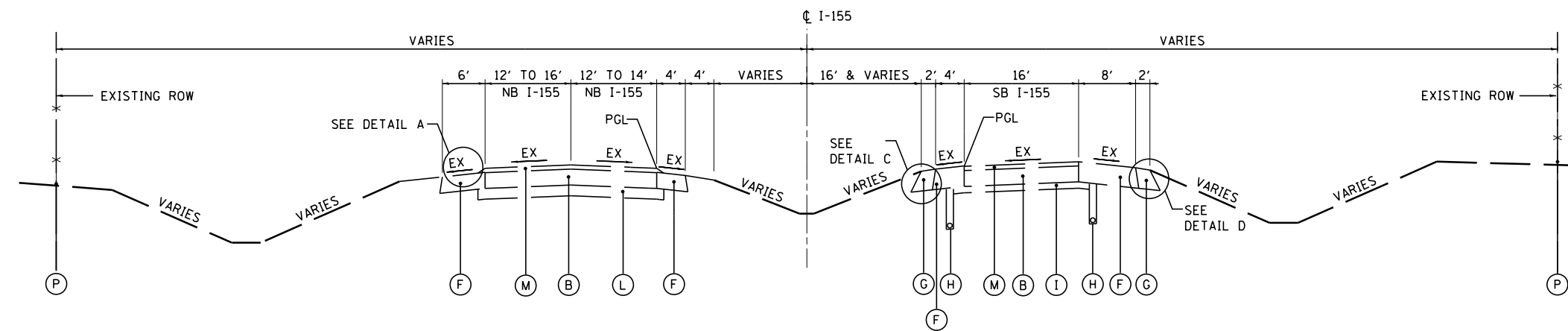
**DETAIL C**



**DETAIL D**

**EXISTING LEGEND:**

- (A) EXISTING H.M.A. OVERLAY - VARIES
- (B) EXISTING P.C.C. PAVEMENT 9 1/4" TO 10 1/4"
- (C) EXISTING SUB-BASE GRANULAR MATERIAL 3" TO 6"
- (D) EXISTING GUARDRAIL
- (E) EXISTING P.C.C. SHOULDER 9 1/4" TO 10 1/4"
- (F) EXISTING H.M.A. SHOULDER 8" TO 10"
- (G) EXISTING AGGREGATE SHOULDER TYPE B 6"
- (H) EXISTING PIPE UNDERDRAIN 4"
- (I) EXISTING STABILIZED SUB-BASE, 4"
- (J) EXISTING SUB-BASE GRANULAR MATERIAL, TYPE A, 12"
- (K) EXISTING SUB-BASE GRANULAR MATERIAL, TYPE C
- (L) EXISTING SUB-BASE GRANULAR MATERIAL, TYPE A, 6"
- (M) EXISTING H.M.A. OVERLAY 2 1/2"
- (N) EXISTING H.M.A. OVERLAY 5 1/2"
- (O) EXISTING H.M.A. OVERLAY 5"
- (P) EXISTING CHAIN LINK FENCE



**EXISTING TYPICAL SECTION**  
**I-155** (D)

NB I-155  
STA 12+48.00 TO STA 15+00.00

SB I-155  
STA 2+20.00 TO STA 17+40.00

FILE NAME = ... \D468620-sh.t.Ex.Typ.I-155.01.dgn	DESIGNED - AJP	REVISED -		<b>STATE OF ILLINOIS</b> <b>DEPARTMENT OF TRANSPORTATION</b>	<b>EXISTING TYPICAL SECTIONS</b> <b>I-155</b>		F.A.I. RTE.	SECTION	COUNTY	TOTAL SHEETS	SHEET NO.
USER NAME = tblank	DRAWN - TMB	REVISED -					90-114R(14HB-4,14,14HVB)BR	TAZEWELL	2433	43	
PLOT DATE = 7/17/2012	CHECKED - JNR	REVISED -			SCALE: NTS SHEET NO. 1 OF 2 SHEETS STA. TO STA.		CONTRACT NO. 68620		ILLINOIS FED. AID PROJECT		
DATE - JULY 20, 2012	REVISOR -	REVISED -									