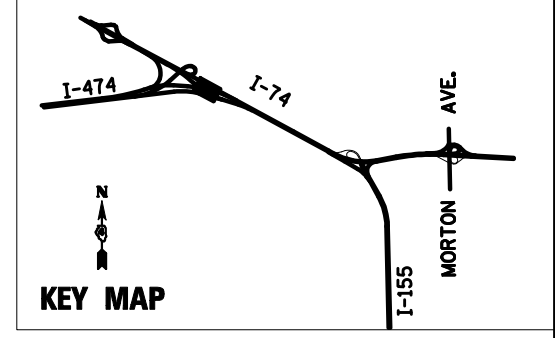
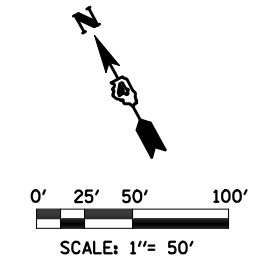


NOTE

1. ALL WORK THAT WILL REQUIRE A LANE CLOSURE WILL BE DONE IN OFF-PEAK HOURS.
2. EXISTING SIGNS SHOWN FOR REFERENCES. ALL EXISTING OVERHEAD AND GROUND-MOUNTED SIGNS SHALL BE RETAINED IN THE MOT PRE-PHASE UNLESS OTHERWISE NOTED.
3. SEE SPECIAL PROVISIONS FOR WORK RESTRICTIONS

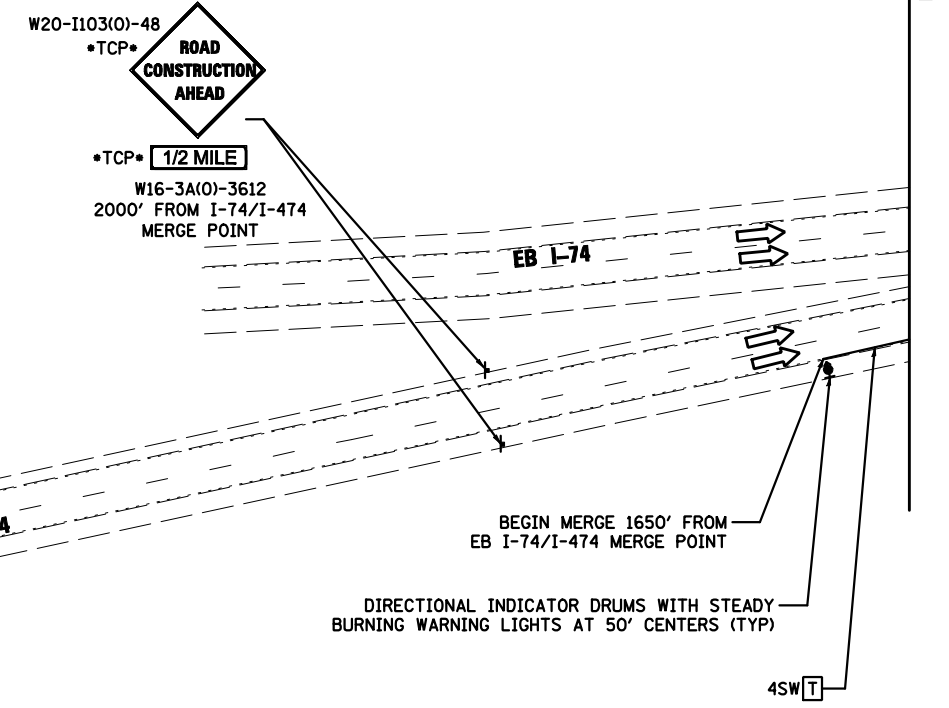
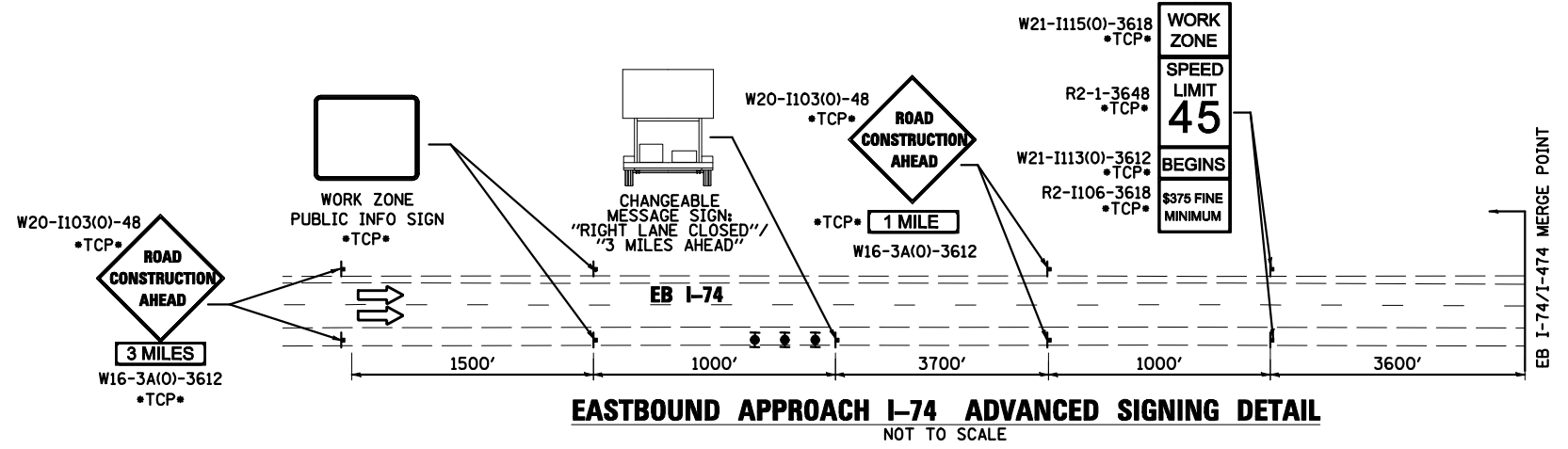
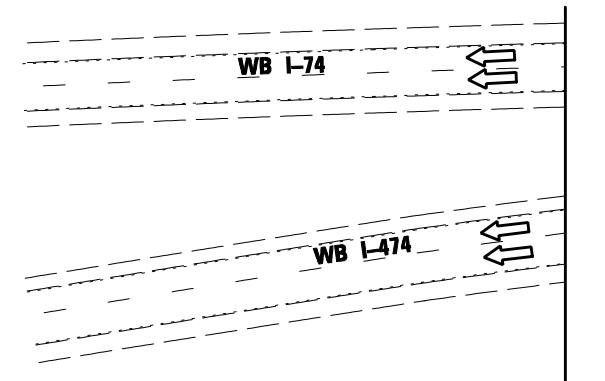
PAVEMENT MARKING LEGEND

- | | | | | | |
|---|---|------|---|------|--------------------------------|
| ① | EXISTING PAVEMENT MARKING | 4SW | 4" SOLID WHITE | 8SW | 8" SOLID WHITE |
| ② | PAVEMENT MARKING FROM PREVIOUS STAGE | 4SY | 4" SOLID YELLOW | 12SW | 12" SOLID WHITE @ 20' SPACING |
| ③ | PROPOSED PAVEMENT MARKING IN PLACE (SEE PROPOSED PAVEMENT MARKING PLAN) | 4SYY | 4" SOLID DOUBLE YELLOW (11" C-C) | 12SY | 12" SOLID YELLOW @ 20' SPACING |
| T | PAVEMENT MARKING TAPE, TYPE III | 4KW | 4" SKIP-DASH WHITE (30' SKIP, 10' DASH) | 24SW | 24" SOLID WHITE STOP BAR |
| P | POLYUREA PAVEMENT MARKING TYPE II | 4DW | 4" DOTTED WHITE (9' SKIP, 3' DASH) | LSW | LETTERS AND SYMBOLS, WHITE |



LEGEND

- | | | | |
|-------|--|---------|--|
| ☉ | DRUMS WITH STEADY BURNING WARNING LIGHTS | XXXX | TEMPORARY PAVEMENT CONSTRUCTION |
| ☉ | DIRECTION INDICATOR BARRICADE WITH STEADY BURN MONODIRECTIONAL LIGHT | | ON-GOING EARTHWORK FOR PROPOSED PAVEMENT |
| | VERTICAL DELINEATOR PANELS | //// | PROPOSED PAVEMENT CONSTRUCTION |
| ⌋ | BARRICADE, TYPE III | | TEMP PVMT REMOVAL (SEE REMOVAL PLAN FOR EX PVMT REMOVAL) |
| ↔ | FLASHING ARROW BOARD | --- --- | REM TEMP AGGREGATE SHOULDERS |
| ➡ | DIRECTION OF TRAFFIC FLOW | --- --- | AGGREGATE SHOULDERS, TYPE B 6" |
| ⊘ | IMPACT ATTENUATOR, TEMPORARY (NON-REDIRECTIVE) | ===== | TEMPORARY CONCRETE BARRIER |
| ⊘ | IMPACT ATTENUATOR, TEMPORARY (NARROW, REDIRECTIVE) | ===== | TEMPORARY CONCRETE BARRIER WITH 36" GLARE SCREEN |
| •TCP• | SIGN INCLUDED IN TRAFFIC CONTROL & PROTECTION (SEE SIGN SCHEDULE) | --- --- | TEMPORARY CONCRETE BARRIER WITH 36" GLARE SCREEN |
| | | ••XX-X | SIGN REFERENCE NUMBER (SEE SIGN SCHEDULE) |



SEE IDOT STANDARD 701400-05, FOR I-474 EASTBOUND ADVANCE SIGNING, SPEED LIMIT SIGN TO READ 45 NOT 55