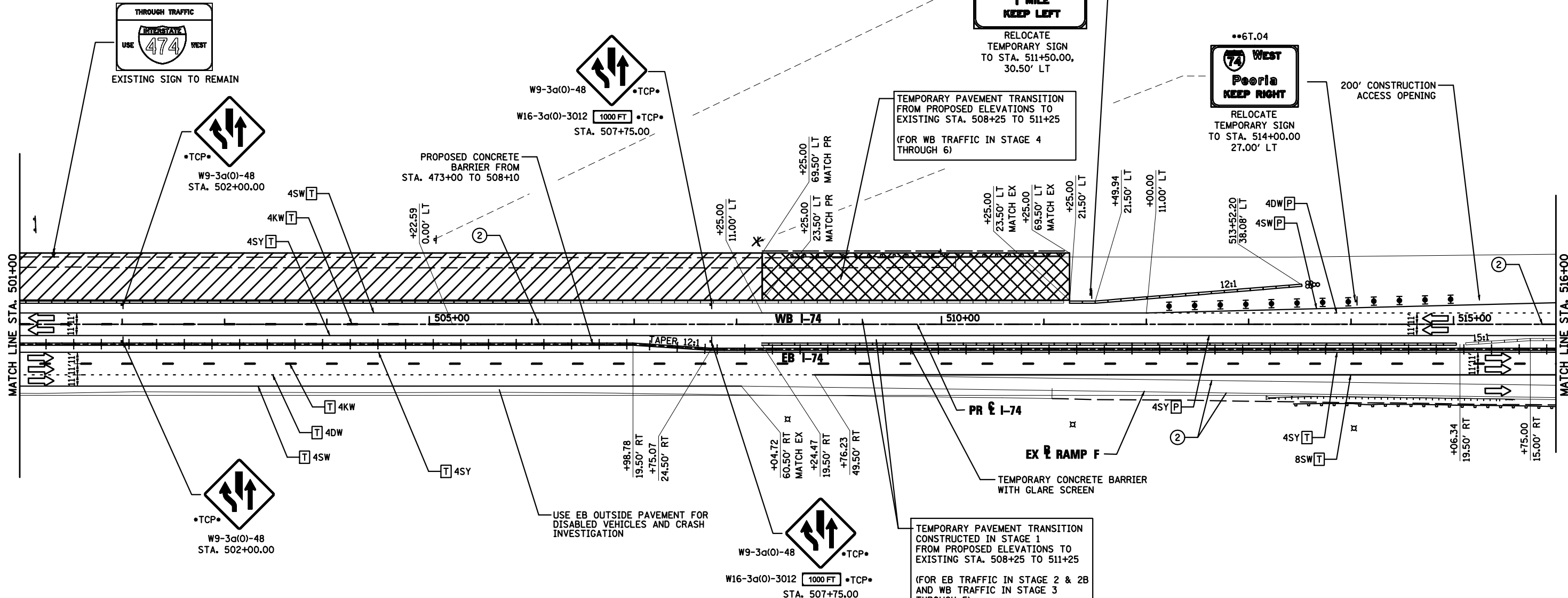


••6T.02
474 WEST
 Moline
 Rock Island
 Pekin
 1 MILE
 KEEP LEFT
 RELOCATE
 TEMPORARY SIGN
 TO STA. 511+50.00,
 30.50' LT

••6T.04
74 WEST
 Peoria
 KEEP RIGHT
 RELOCATE
 TEMPORARY SIGN
 TO STA. 514+00.00,
 27.00' LT

TEMPORARY PAVEMENT TRANSITION
 FROM PROPOSED ELEVATIONS TO
 EXISTING STA. 508+25 TO 511+25
 (FOR WB TRAFFIC IN STAGE 4
 THROUGH 6)

TEMPORARY PAVEMENT TRANSITION
 CONSTRUCTED IN STAGE 1
 FROM PROPOSED ELEVATIONS TO
 EXISTING STA. 508+25 TO 511+25
 (FOR EB TRAFFIC IN STAGE 2 & 2B
 AND WB TRAFFIC IN STAGE 3
 THROUGH 5)



PAVEMENT MARKING LEGEND

- ① EXISTING PAVEMENT MARKING
- ② PAVEMENT MARKING FROM PREVIOUS STAGE
- ③ PROPOSED PAVEMENT MARKING IN PLACE (SEE PROPOSED PAVEMENT MARKING PLAN)
- T PAVEMENT MARKING TAPE, TYPE III
- P POLYUREA PAVEMENT MARKING TYPE II

- 4SW 4" SOLID WHITE
- 4SY 4" SOLID YELLOW
- 4SYY 4" SOLID DOUBLE YELLOW (11" C-C)
- 4KW 4" SKIP-DASH WHITE (30' SKIP, 10' DASH)
- 4DW 4" DOTTED WHITE (9' SKIP, 3' DASH)
- 8SW 8" SOLID WHITE
- 12SW 12" SOLID WHITE @ 20' SPACING
- 12SY 12" SOLID YELLOW @ 20' SPACING
- 24SW 24" SOLID WHITE STOP BAR
- LSW LETTERS AND SYMBOLS, WHITE

LEGEND

- ☼ DRUMS WITH STEADY BURNING WARNING LIGHTS
- ☼ DIRECTION INDICATOR BARRICADE WITH STEADY BURN MONODIRECTIONAL LIGHT
- VERTICAL DELINEATOR PANELS
- BARRICADE, TYPE III
- FLASHING ARROW BOARD
- DIRECTION OF TRAFFIC FLOW
- ☼ IMPACT ATTENUATOR, TEMPORARY (NON-REDIRECTIVE)
- ☼ IMPACT ATTENUATOR, TEMPORARY (NARROW, REDIRECTIVE)
- TCP• SIGN INCLUDED IN TRAFFIC CONTROL & PROTECTION (SEE SIGN SCHEDULE)
- XX-X SIGN REFERENCE NUMBER (SEE SIGN SCHEDULE)
- ▨ TEMPORARY PAVEMENT CONSTRUCTION
- ▨ ON-GOING EARTHWORK FOR PROPOSED PAVEMENT
- ▨ PROPOSED PAVEMENT CONSTRUCTION
- ▨ TEMP PVMT REMOVAL (SEE REMOVAL PLAN FOR EX PVMT REMOVAL)
- REM TEMP AGGREGATE SHOULDERS
- AGGREGATE SHOULDERS, TYPE B 6"
- TEMPORARY CONCRETE BARRIER
- TEMPORARY CONCRETE BARRIER WITH 36" GLARE SCREEN

FILE NAME = D468620-shr-staging06 174-03.dgn	DESIGNED - HTL	REVISED -		STATE OF ILLINOIS DEPARTMENT OF TRANSPORTATION	MAINTENANCE OF TRAFFIC STAGE 3A		F.A.I. RTE. = 90-[14R(14HB-4,14,14HB)/BR]	SECTION	COUNTY	TOTAL SHEETS	SHEET NO.
USER NAME = TERRA	DRAWN - JPS	REVISED -					TAZEWELL	2433	618		
PLOT DATE = 7/16/2012	CHECKED - DA/LVA	REVISED -			CONTRACT NO. 68620				ILLINOIS FED. AID PROJECT		
DATE - 7/20/2012	REVISIONS	REVISED -			SCALE: SHEET NO. 12 OF 54 SHEETS	STA. 501+00 TO STA. 516+00	• 74 & 155				