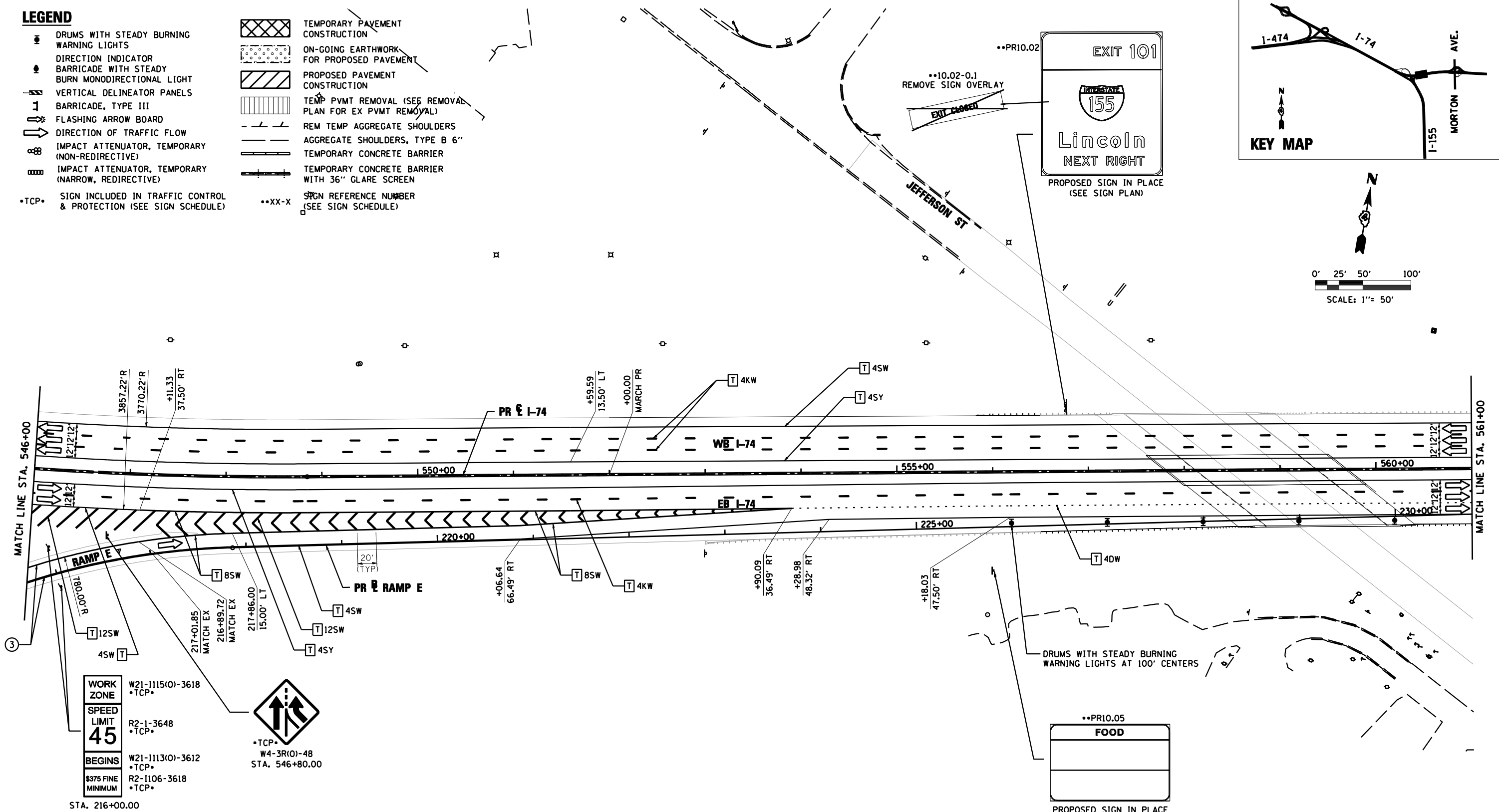
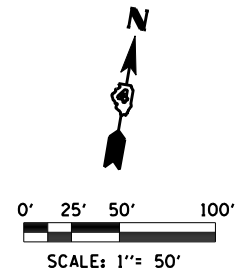
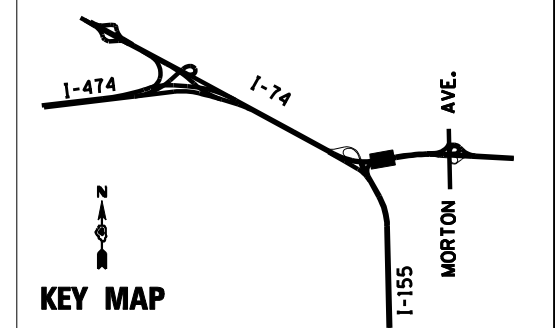


LEGEND

- DRUMS WITH STEADY BURNING WARNING LIGHTS
- DIRECTION INDICATOR BARRICADE WITH STEADY BURN MONODIRECTIONAL LIGHT
- VERTICAL DELINEATOR PANELS
- BARRICADE, TYPE III
- FLASHING ARROW BOARD
- DIRECTION OF TRAFFIC FLOW
- IMPACT ATTENUATOR, TEMPORARY (NON-REDIRECTIVE)
- IMPACT ATTENUATOR, TEMPORARY (NARROW, REDIRECTIVE)
- TCP• SIGN INCLUDED IN TRAFFIC CONTROL & PROTECTION (SEE SIGN SCHEDULE)

- TEMPORARY PAVEMENT CONSTRUCTION
- ON-GOING EARTHWORK FOR PROPOSED PAVEMENT
- PROPOSED PAVEMENT CONSTRUCTION
- TEMP PVMT REMOVAL (SEE REMOVAL PLAN FOR EX PVMT REMOVAL)
- REM TEMP AGGREGATE SHOULDERS
- AGGREGATE SHOULDERS, TYPE B 6"
- TEMPORARY CONCRETE BARRIER
- TEMPORARY CONCRETE BARRIER WITH 36" GLARE SCREEN
- STCN REFERENCE NUMBER (SEE SIGN SCHEDULE)
- XX-X



PAVEMENT MARKING LEGEND

- ① EXISTING PAVEMENT MARKING
- ② PAVEMENT MARKING FROM PREVIOUS STAGE
- ③ PROPOSED PAVEMENT MARKING IN PLACE (SEE PROPOSED PAVEMENT MARKING PLAN)
- T PAVEMENT MARKING TAPE, TYPE III
- P POLYUREA PAVEMENT MARKING TYPE II
- 4SW 4" SOLID WHITE
- 4SY 4" SOLID YELLOW
- 4SYY 4" SOLID DOUBLE YELLOW (11" C-C)
- 4KW 4" SKIP-DASH WHITE (30' SKIP, 10' DASH)
- 4DW 4" DOTTED WHITE (9' SKIP, 3' DASH)
- 8SW 8" SOLID WHITE
- 12SW 12" SOLID WHITE @ 20' SPACING
- 12SY 12" SOLID YELLOW @ 20' SPACING
- 24SW 24" SOLID WHITE STOP BAR
- LSW LETTERS AND SYMBOLS, WHITE

WORK ZONE
W21-1115(O)-3618
•TCP•

SPEED LIMIT 45
R2-1-3648
•TCP•

BEGINS
W21-1113(O)-3612
•TCP•

\$375 FINE MINIMUM
R2-1106-3618
•TCP•

STA. 216+00.00

•TCP•
W4-3R(O)-48
STA. 546+80.00

FILE NAME = D468620-sh1-staging10 174-12W52.dgn	DESIGNED - HTL	REVISED -
USER NAME = TERRA	DRAWN - JPS	REVISED -
PLOT DATE = 7/16/2012	CHECKED - DA/LVA	REVISED -
	DATE - 7/20/2012	REVISED -



STATE OF ILLINOIS
DEPARTMENT OF TRANSPORTATION

MAINTENANCE OF TRAFFIC
2014 WINTER SHUTDOWN

SCALE: SHEET NO. 10 OF 21 SHEETS STA. 546+00 TO STA. 561+00

F.A.I. RTE.	SECTION	COUNTY	TOTAL SHEETS	SHEET NO.
•	90-[14R(14HB-4,14,14HVB)BR]	TAZEWELL	2433	1167
CONTRACT NO. 68620			ILLINOIS FED. AID PROJECT	