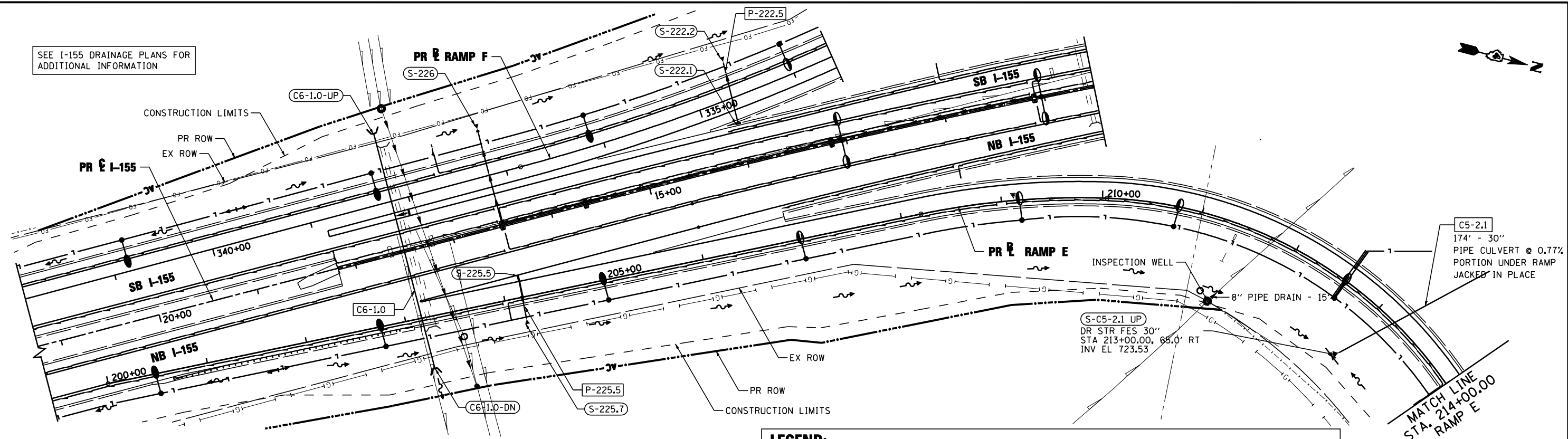


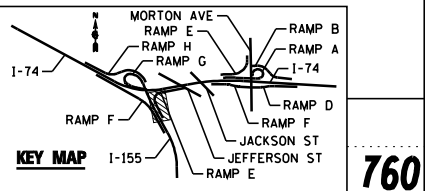
SEE I-155 DRAINAGE PLANS FOR ADDITIONAL INFORMATION

PLAN	SURVEYED	BY	DATE
	PLOTTED		
	CHECKED		
	ALIGNED		
	FILE NAME		
	NO.		

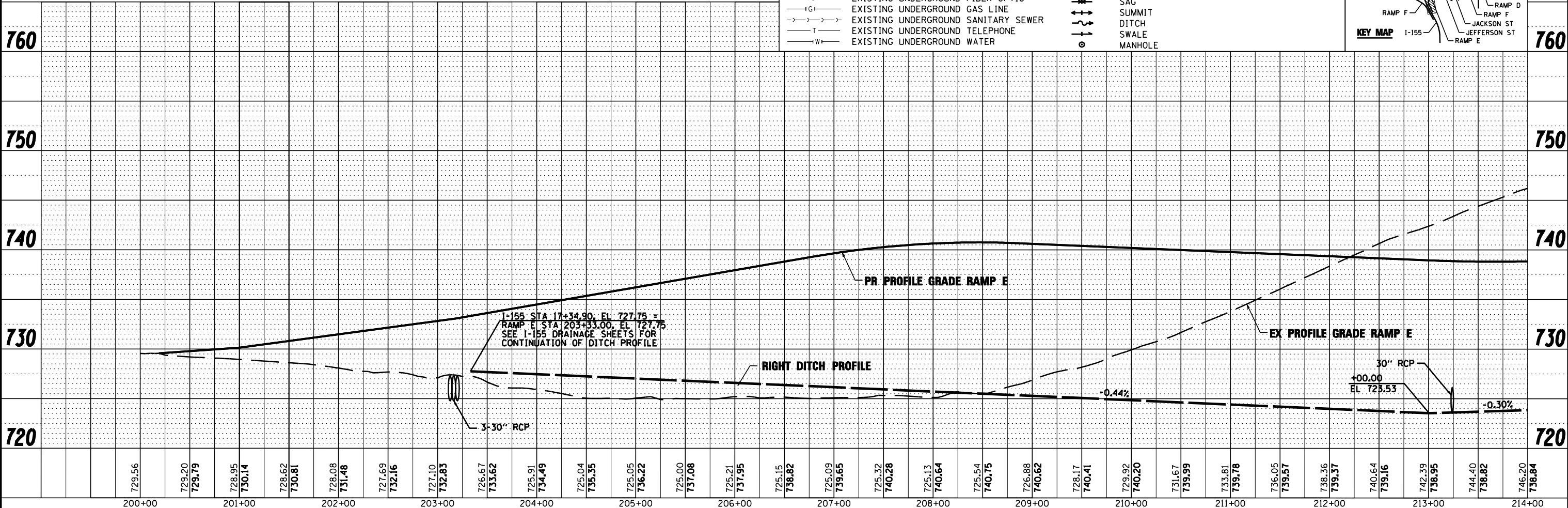


**LEGEND:**

— A —	EXISTING AERIAL LINE	— S —	PROPOSED STORM SEWER
— CTV —	EXISTING UNDERGROUND CABLE TV	(S-101B)	PROPOSED PIPE UNDERDRAIN
— E —	EXISTING UNDERGROUND ELECTRIC	(P-101)	PROPOSED STORM SEWER STRUCTURE CALLOUTS
— FO —	EXISTING UNDERGROUND FIBER OPTIC	— SAG —	PROPOSED STORM SEWER PIPE CALLOUTS
— IG —	EXISTING UNDERGROUND GAS LINE	— SUMMIT —	
— T —	EXISTING UNDERGROUND SANITARY SEWER	— DITCH —	
— W —	EXISTING UNDERGROUND TELEPHONE	— SWALE —	
— W —	EXISTING UNDERGROUND WATER	— MANHOLE —	



PROFILE	SURVEYED	BY	DATE
	PLOTTED		
	CHECKED		
	GRADES		
	STRUCTURE		
	NOTATIONS		
	CHFD		



FILE NAME =	DESIGNED - AJP	REVISED -		<b>STATE OF ILLINOIS</b> <b>DEPARTMENT OF TRANSPORTATION</b>		<b>DRAINAGE AND UTILITY PLAN AND PROFILE</b> <b>I-155 RAMP E</b>		F.A.I. SECTION	COUNTY	TOTAL SHEETS	SHEET NO.
...\\D468620-sht-1-155-RampE-drain17.dgn	DRAWN - TMB	REVISED -						90-114R(14HB-4,14,14HVB)BR	TAZEWELL	2433	1430
USER NAME = toddblenk	CHECKED - JNR	REVISED -						CONTRACT NO. 68620			
PLOT DATE = 7/17/2012	DATE - JULY 20, 2012	REVISED -	SCALE: 1"=50'		SHEET NO. 1 OF 8 SHEETS	STA. POB TO STA. 215+00.00	ILLINOIS FED. AID PROJECT				