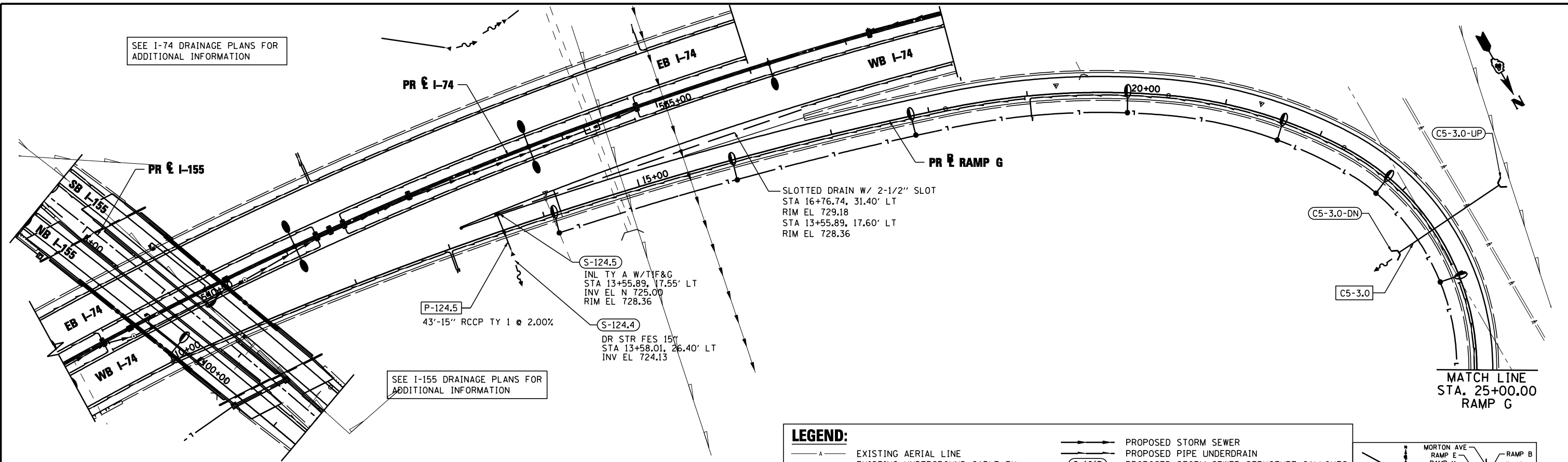


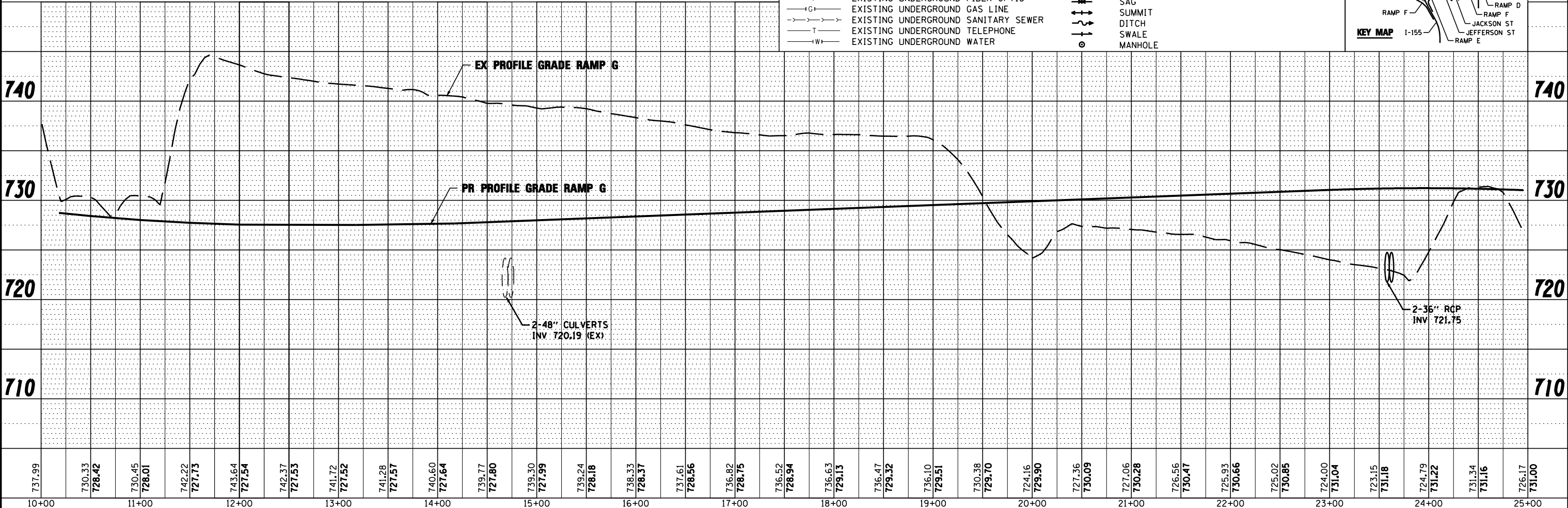
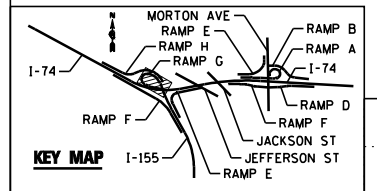
PLAN	SURVEYED	BY	DATE
	PLOTTED		
	CHECKED		
	ALIGNED		
	FILE NAME		
	NO.		

PROFILE	SURVEYED	BY	DATE
	PLOTTED		
	CHECKED		
	GRADES		
	STRUCTURE		
	NOTATIS		
	CHFD		
	NO.		



**LEGEND:**

— A —	EXISTING AERIAL LINE	— S —	PROPOSED STORM SEWER
— CTV —	EXISTING UNDERGROUND CABLE TV	— S-101B —	PROPOSED PIPE UNDERDRAIN
— E —	EXISTING UNDERGROUND ELECTRIC	— P-101 —	PROPOSED STORM SEWER STRUCTURE CALLOUTS
— FO —	EXISTING UNDERGROUND FIBER OPTIC	— S —	PROPOSED STORM SEWER PIPE CALLOUTS
— IG —	EXISTING UNDERGROUND GAS LINE	— SAG —	SAG
— T —	EXISTING UNDERGROUND SANITARY SEWER	— D —	SUMMIT
— W —	EXISTING UNDERGROUND TELEPHONE	— D —	DITCH
— W —	EXISTING UNDERGROUND WATER	— SW —	SWALE
		— M —	MANHOLE



FILE NAME =	DESIGNED -	AJP	REVISED -	
...D468620-sht-1-155-RampG-drain24.dgn	DRAWN -	TMB	REVISED -	
USER NAME = toddbenk	CHECKED -	JNR	REVISED -	
PLOT DATE = 7/17/2012	DATE -	JULY 20, 2012	REVISED -	



STATE OF ILLINOIS  
DEPARTMENT OF TRANSPORTATION

DRAINAGE AND UTILITY PLAN AND PROFILE  
I-155 RAMP G  
SCALE: 1"=50' SHEET NO. 5 OF 8 SHEETS STA. POB TO STA. 25+00.00

F.A.I. RTE.	SECTION	COUNTY	TOTAL SHEETS	SHEET NO.
90-114R(14HB-4,14,14HVB)BR		TAZEWELL	2433	1434
CONTRACT NO. 68620			ILLINOIS FED. AID PROJECT	