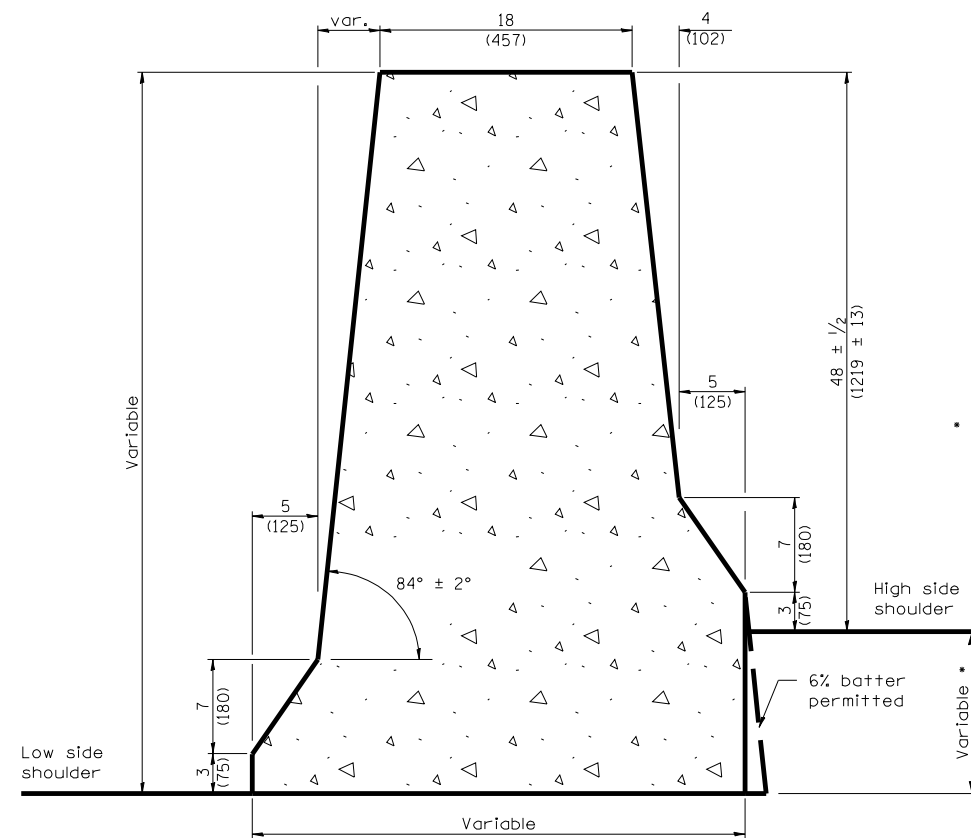
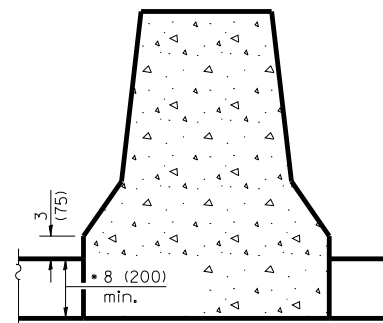


**TYPICAL CROSS-SECTION**



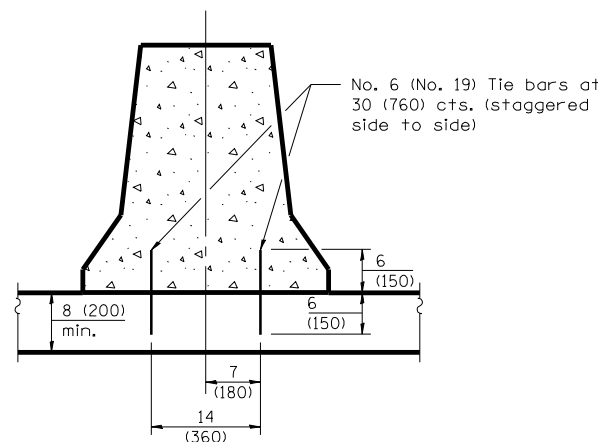
**VARIABLE CROSS-SECTION**

• When this dimension exceeds 12 (300), the barrier may be cast in two pours. No. 6 x 12 (No. 19 x 300) tie bars at 30 (760) centers, or a suitable keyway, shall be used between the pours.



**NEW MONOLITHIC PCC BASE**

• This dimension shall be 10 (250) minimum when the barrier is confined by earth.



**NEW OR EXISTING PCC BASE**

**ANCHORING METHODS**

**GENERAL NOTES**

The Variable Cross-Section shall be used when there is a difference in elevation between the two sides of the barrier.

When electrical conduits are involved, they shall be located either in the barrier base or in the earth below.

All dimensions are in inches (millimeters) unless otherwise shown.

FILE NAME =	DESIGNED - I S	REVISED -
...\\D468620-shr-ConcBarrierDblFace-48in-01.dwg	DRAWN - TMB	REVISED -
USER NAME = toddblank	CHECKED - JNR	REVISED -
PLOT DATE = 7/17/2012	DATE - JULY 20, 2012	REVISED -



**STATE OF ILLINOIS  
DEPARTMENT OF TRANSPORTATION**

**CONCRETE BARRIER  
DOUBL FACE 48"**

SCALE: SHEET NO. 2 OF 3 SHEETS STA. TO STA.

F.A.I. RTE.	SECTION	COUNTY	TOTAL SHEETS	SHEET NO.
90-114R(14HB-4,14,14HVB)BR		TAZEWELL	2433	1503
			CONTRACT NO. 68620	
ILLINOIS FED. AID PROJECT				