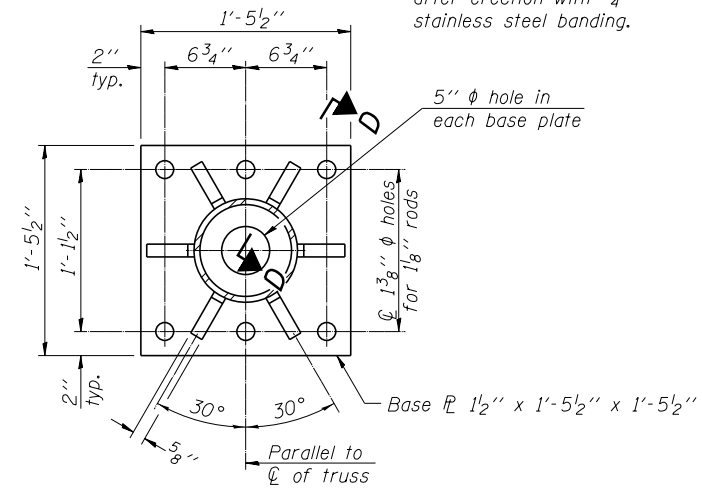
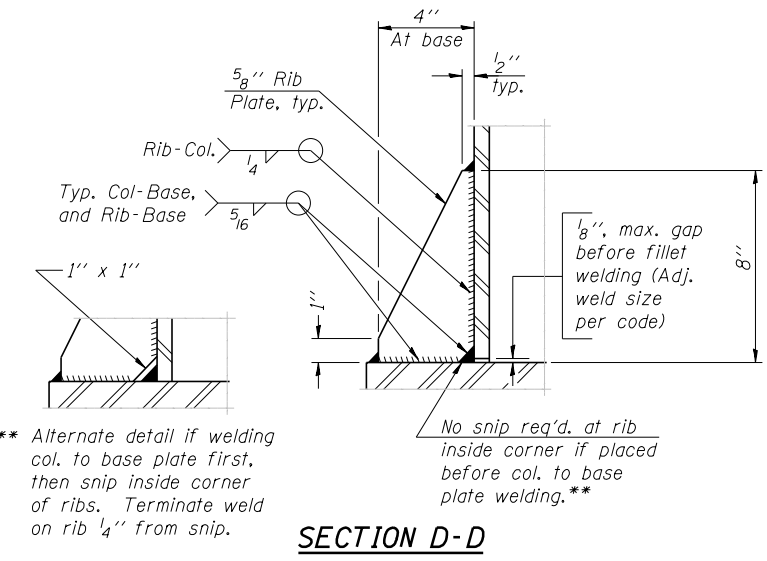


DETAIL B

Ribs shall be cut to fit slope of pipe. Stainless Steel Standard Grade Wire Cloth, 3" wide, 1/4" maximum opening with a minimum wire diameter of AWG. No. 16 with a minimum 2" lap. Secure to base plate after erection with 3/4" stainless steel banding.

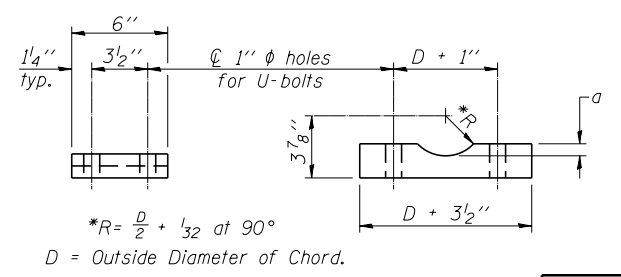


SECTION B-B



SECTION D-D

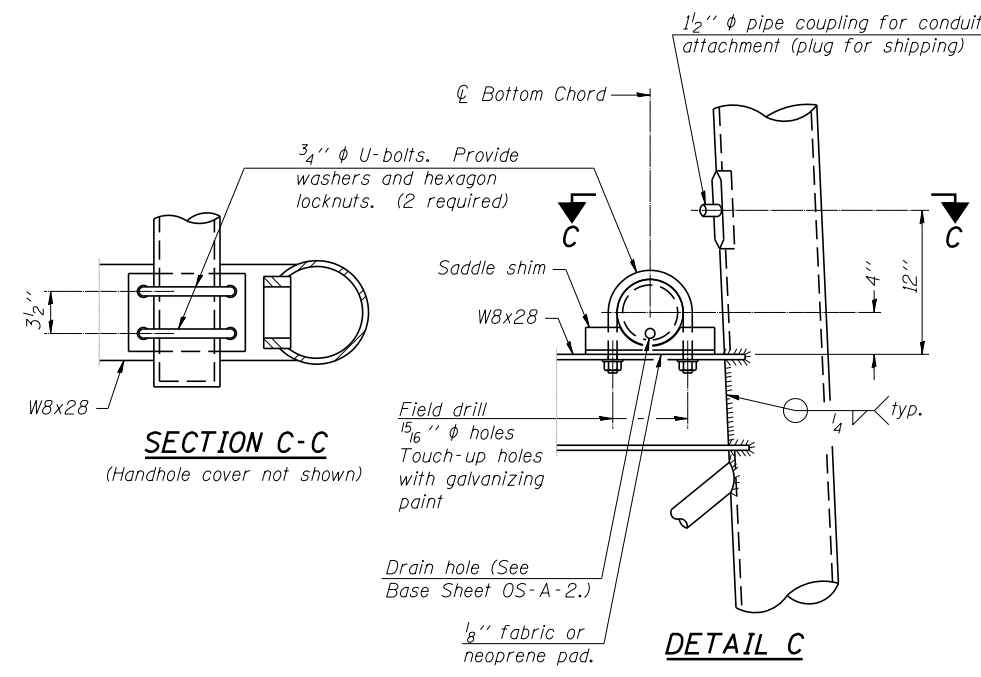
1/8" max. gap before fillet welding (Adj. weld size per code)
 No snip req'd. at rib inside corner if placed before col. to base plate welding.
 ** Alternate detail if welding col. to base plate first, then snip inside corner of ribs. Terminate weld on rib 1/4" from snip.



SADDLE SHIM DETAIL

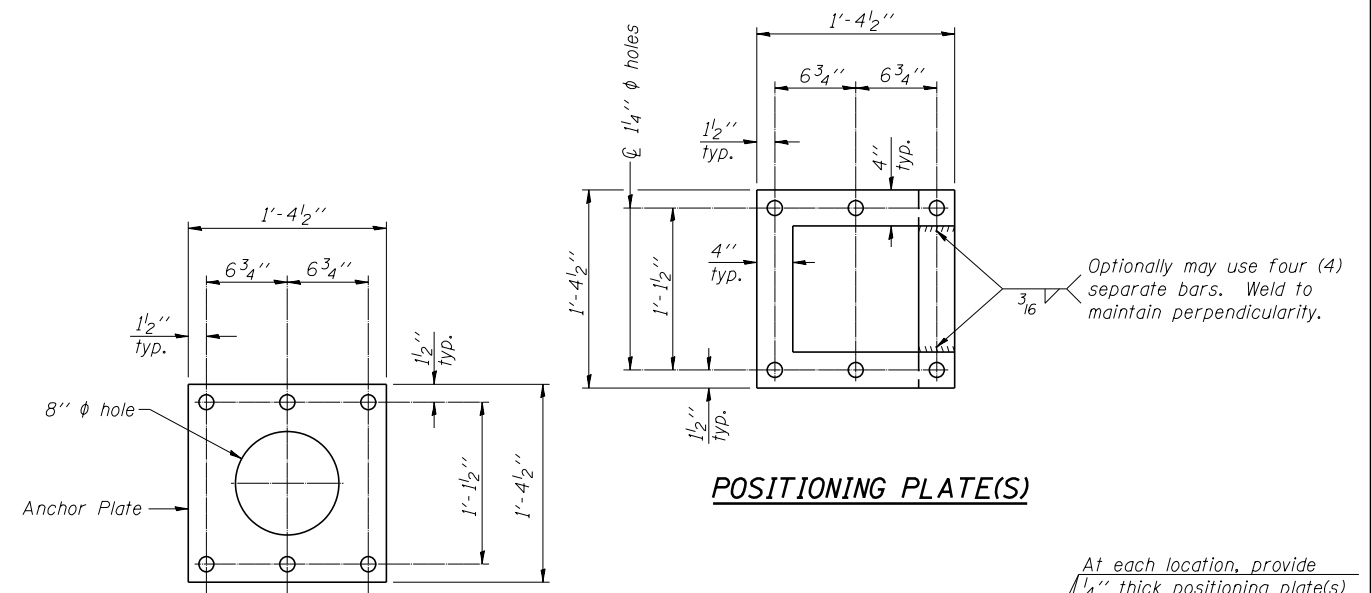
ASTM B26 Alloy 356-F
 or
 ASTM B209 Alloy 6061-T651
 (4 required per sign truss)

Truss Chord Nominal Dia.	a
5"	3/4"
5 1/2"	1 3/16"
6"	7/8"
6 1/2"	1 5/16"



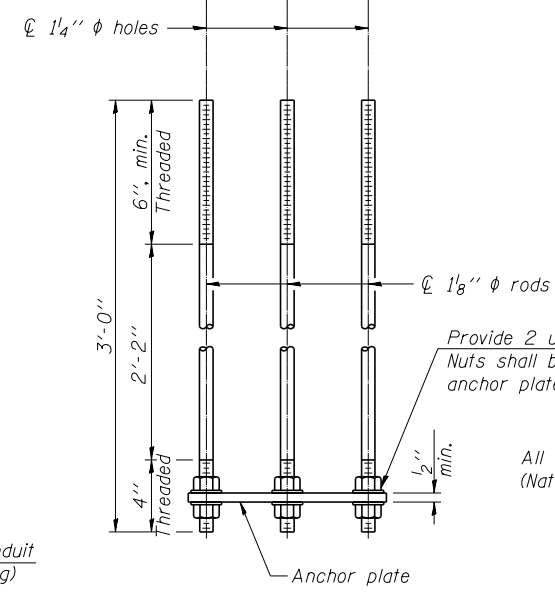
SECTION C-C

DETAIL C



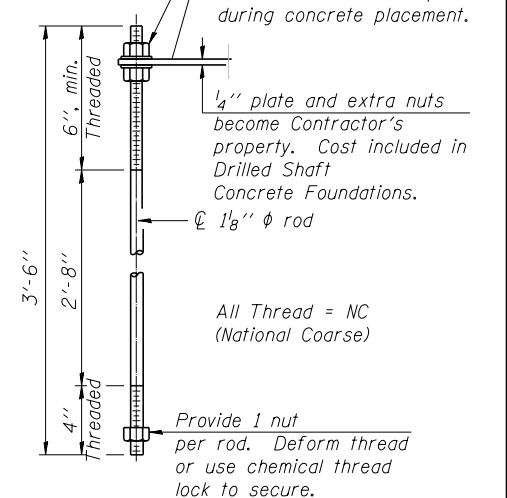
POSITIONING PLATE(S)

Optionally may use four (4) separate bars. Weld to maintain perpendicularity.



ANCHOR ROD DETAIL
 Spread Footing Foundation

All Thread = NC (National Coarse)



ANCHOR ROD DETAIL
 Drilled Shaft Foundation

All Thread = NC (National Coarse)

TYPE I-A TRUSS
8" Ø PIPE SUPPORT FRAME DETAILS

Anchor rods shall conform to ASTM F1554 Grade 105. Galvanize upper 12" minimum per AASHTO M232. No welding shall be permitted on rods.

FILE NAME :	USER NAME :	DESIGNED :	REVISD :
xxxxxx_68620_06_fm2.dgn	mbecker	MFB	-
		KJN	-
		MFB	-
		KJN	-

F.A.I. RTE.	SECTION	COUNTY	TOTAL SHEETS	SHEET NO.
74	90-[14R(14HB-4,14,14HVB)BR]	TAZEWELL	2433	1626
CONTRACT NO. 68620				