

NOTES:

The foundation dimensions shown are based on the presence of mostly cohesive soils with an average Unconfined Compressive Strength (Q_u) of at least 1.25 tsf, which must be determined by previous soil investigations at the jobsite. When other conditions are indicated, the boring data will be included in the plans and the foundation dimensions shown will be the result of site specific designs.

If the conditions encountered are different than those indicated, the Contractor shall notify the Engineer to determine if the foundation dimensions need to be modified. If dimensions "B" or "F" are revised by more than 12" by the Contractor, "as-built" plans shall be prepared and submitted to the District Bureau of Operations for future reference.

No sonotubes or decomposable forms shall be used below the lower conduit entrance. Permanent metal forms or other shielding may not be left in place below that elevation without the Engineer's written permission.

Concrete shall be placed monolithically, without construction joints. Backfill shall be placed per Article 502 of Standard Specification and prior to erection of support column.

A normal surface finish followed by a Bridge Seat Sealer application will be required on concrete surfaces above the lowest elevation 6" below finished ground line. Cost included in Drilled Shaft Concrete Foundation.

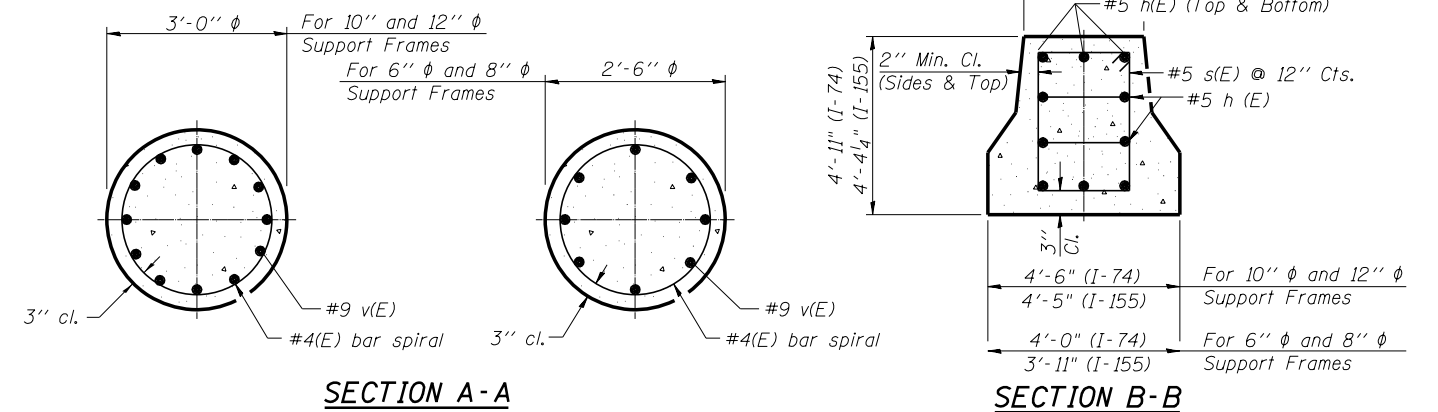
BAR LIST - EACH FOUNDATION

Bar	Number	Size	Length	Shape
h(E)	10	#5	M less 4"	—
s(E)	Varies	#5	Varies	□
v(E)	16	#9	F less 0'-5"	—
v(E)	24	#9	F less 0'-5"	—
#4(E) bar spiral - see Side Elevation				

6" ϕ and 8" ϕ Support Frame
10" ϕ and 12" ϕ Support Frame

Pipe Support Frames	cc	M	a	a/2
6" ϕ	7'-0"	9'-6"	0'-11"	5 1/2"
8" ϕ	7'-6"	10'-0"	1'-1 1/2"	6 3/4"
10" ϕ	8'-3"	11'-3"	1'-3"	7 1/2"
12" ϕ	9'-0"	12'-0"	1'-6"	9"

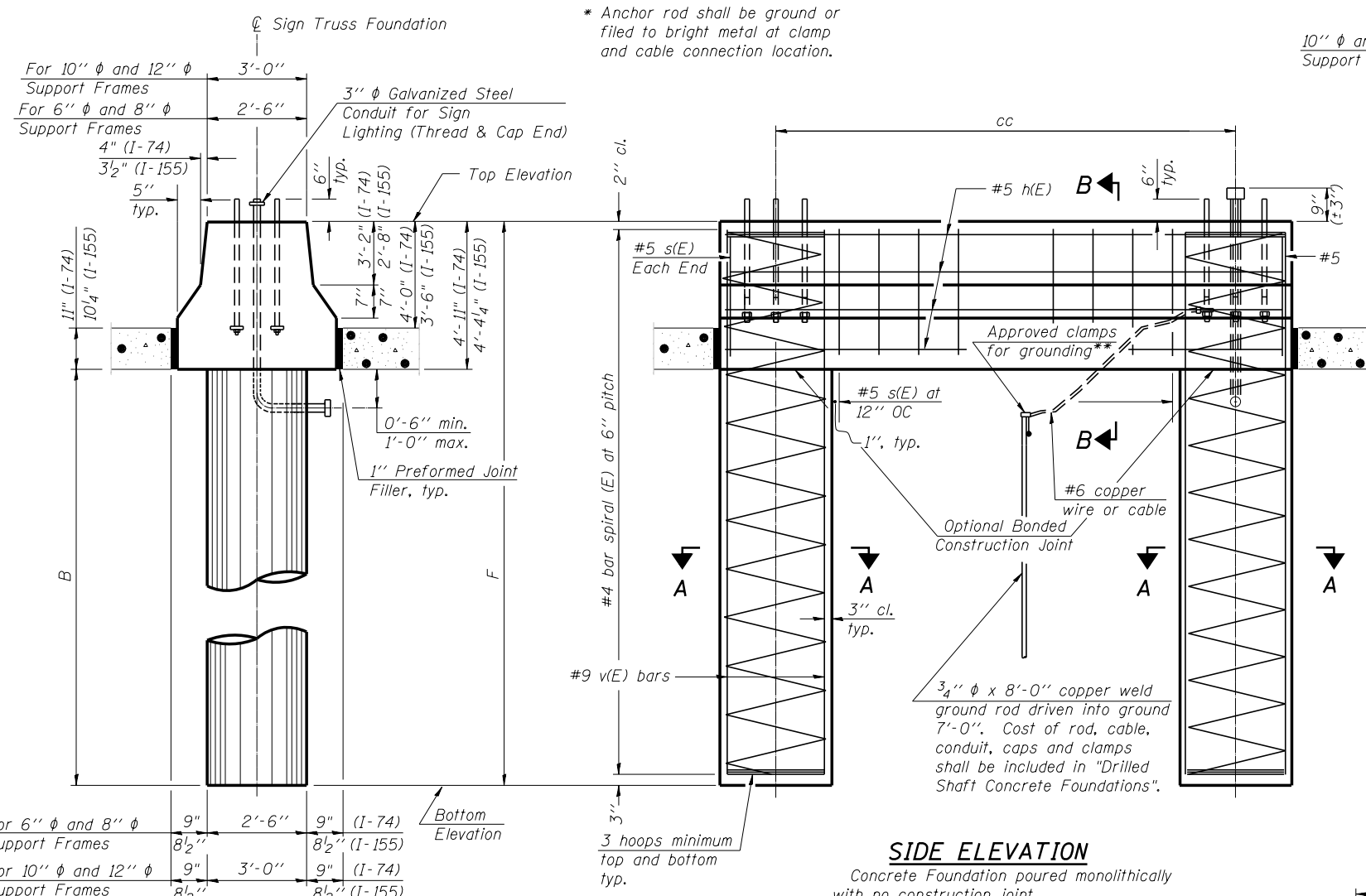
All dimensions in parenthesis are for 42" high barrier.



SECTION A-A

SECTION B-B

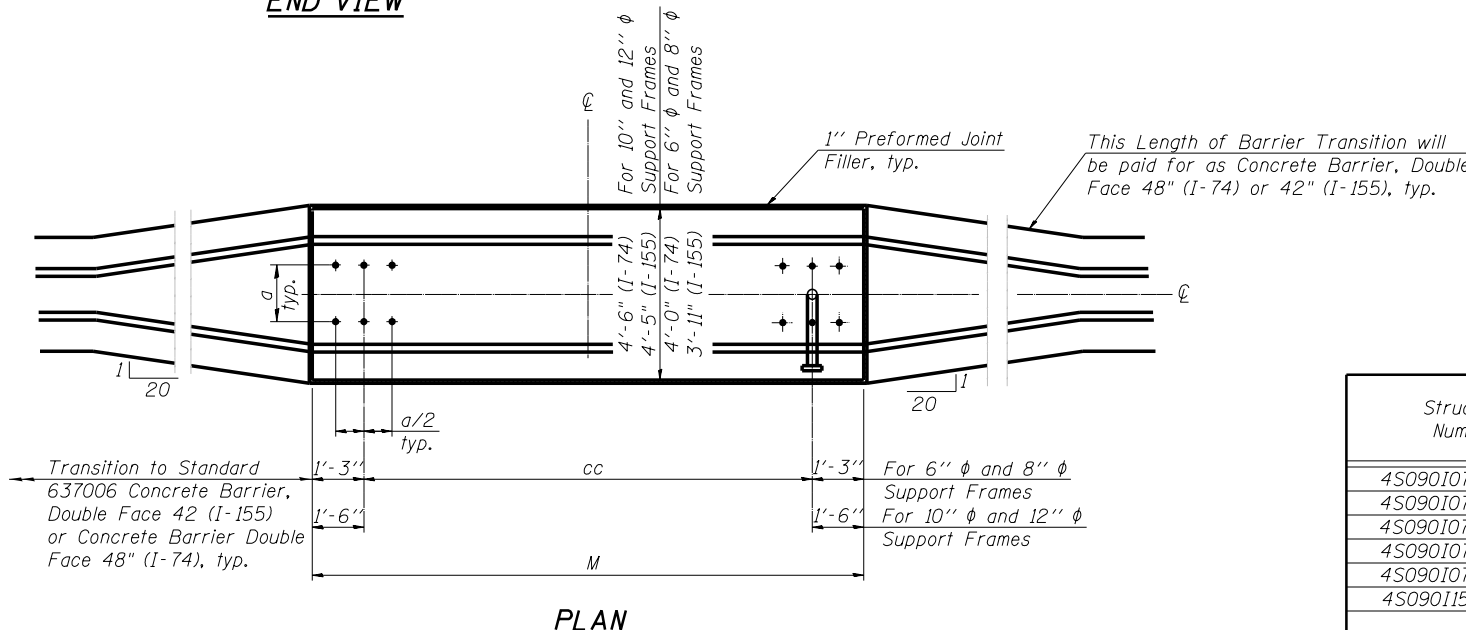
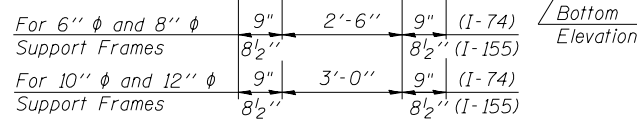
Structure Number	Station	Left Foundation				Right Foundation				Class DS Concrete (Cu. Yds.)
		Elevation Top	Elevation Bottom	B	F	Elevation Top	Elevation Bottom	B	F	
4S0901074L100.0	482+66.50	733.34	711.93	16.5'	21.42'	-	-	-	-	16.8
4S0901074L100.3	495+10.00	737.08	714.17	18.0'	22.92'	-	-	-	-	18.2
4S0901074R100.3	498+50.00	738.13	715.72	17.5'	22.42'	-	-	-	-	17.4
4S0901074L100.5	508+15.00	741.01	718.09	18.0'	22.92'	-	-	-	-	18.2
4S0901074R100.6	515+50.00	740.13	710.21	25.0'	29.92'	-	-	-	-	21.3
4S0901155R031.9	17+68.62	735.79	716.94	14.5'	18.85'	-	-	-	-	10.9



SIDE ELEVATION

Concrete Foundation poured monolithically with no construction joint.

END VIEW



PLAN

benesch
engineers · scientists · planners
Alfred Benesch & Company
205 North Michigan Avenue, Suite 2400
Chicago, Illinois 60601
312-565-0450 Job No. 10056

FILE NAME =	USER NAME = mbecker	DESIGNED - MFB	REVISED -
xxxxxx_68620_20.dwg		CHECKED - KJN	REVISED -
	PLOT SCALE =	DRAWN - MFB	REVISED -
	PLOT DATE = 7/16/2012	CHECKED - KJN	REVISED -

**STATE OF ILLINOIS
DEPARTMENT OF TRANSPORTATION**

**OVERHEAD SIGN STRUCTURES
MEDIAN SUPPORT FOUNDATION DETAILS**

SHEET NO. SS20 OF SS32 SHEETS

F.A.I. RTE.	SECTION	COUNTY	TOTAL SHEETS	SHEET NO.
74	90-[14R(14HB-4,14,14HB)BR]	TAZEWELL	2433	1640
CONTRACT NO. 68620				
ILLINOIS FED. AID PROJECT				