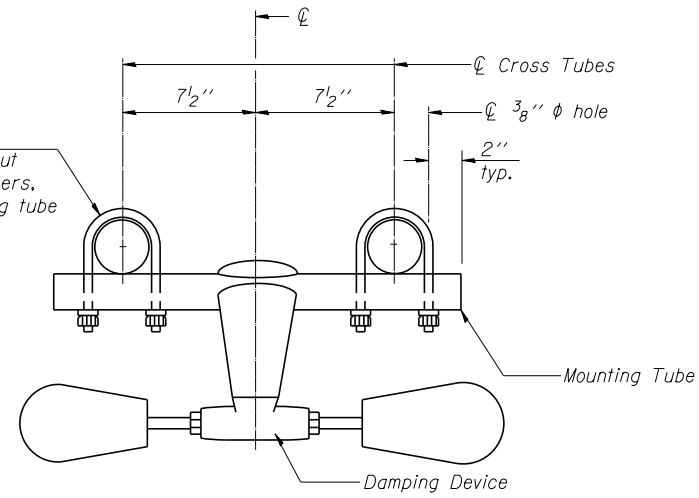
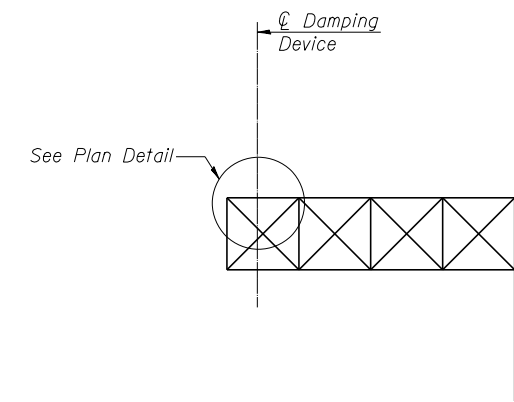


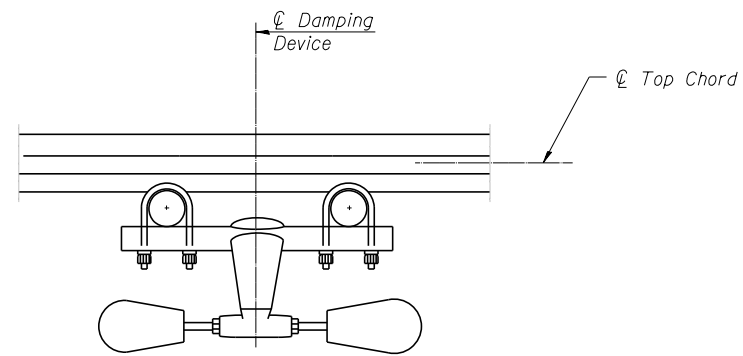
PLAN DETAIL



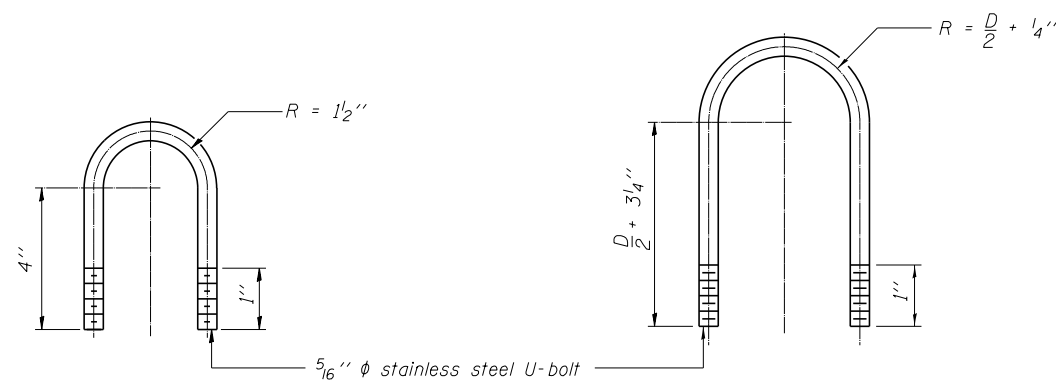
TRUSS DAMPING DEVICE CONNECTION DETAIL



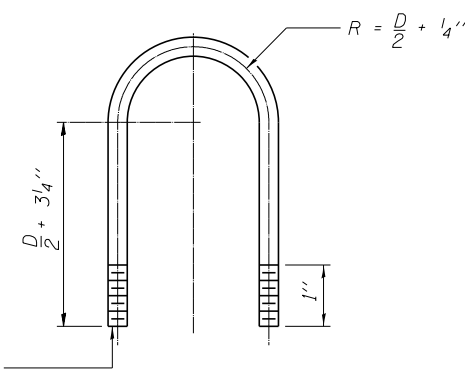
ELEVATION
Aluminum Cantilever Sign Structure



SECTION A-A



DAMPING DEVICE MOUNTING TUBE U-BOLT DETAIL
(Typical)



TOP CHORD TO CROSS TUBE U-BOLT DETAIL
(Typical)

- GENERAL NOTES**
- Damper: One damper per truss. (31 lbs. Stockbridge-Type Aluminum-29" minimum between ends of weights)
 - Materials: Aluminum tubes shall be ASTM B221 alloy 6061 temper T6



Alfred Benesch & Company
205 North Michigan Avenue, Suite 2400
Chicago, Illinois 60601
312-565-0450 Job No. 10056

OSC-A-D

6-1-12

FILE NAME =	xxxxxx_68620_23_dmp2.dgn
USER NAME =	mbecker
PLOT SCALE =	
PLOT DATE =	7/16/2012

DESIGNED -	MFB	REVISD -	
CHECKED -	KJN	REVISD -	
DRAWN -	MFB	REVISD -	
CHECKED -	KJN	REVISD -	

STATE OF ILLINOIS	DEPARTMENT OF TRANSPORTATION
CANTILEVER SIGN STRUCTURE	
DAMPING DEVICE	
SHEET NO. SS23 OF SS32 SHEETS	

F.A.I. RTE.	SECTION	COUNTY	TOTAL SHEETS	SHEET NO.
74	90-[14R;(14HB-4,14,14HVB)BR]	TAZEWELL	2433	1643
CONTRACT NO. 68620				
ILLINOIS FED. AID PROJECT				

STATE OF ILLINOIS	DEPARTMENT OF TRANSPORTATION
CANTILEVER SIGN STRUCTURE	
DAMPING DEVICE	
SHEET NO. SS23 OF SS32 SHEETS	

F.A.I. RTE.	SECTION	COUNTY	TOTAL SHEETS	SHEET NO.
74	90-[14R;(14HB-4,14,14HVB)BR]	TAZEWELL	2433	1643
CONTRACT NO. 68620				
ILLINOIS FED. AID PROJECT				

x:\10000s\10056\engineer-ing-documents-phase-1\signs-structures\final\xxxxxxxx_68620_23_dmp2.dgn 7:33:10 AM 7/16/2012