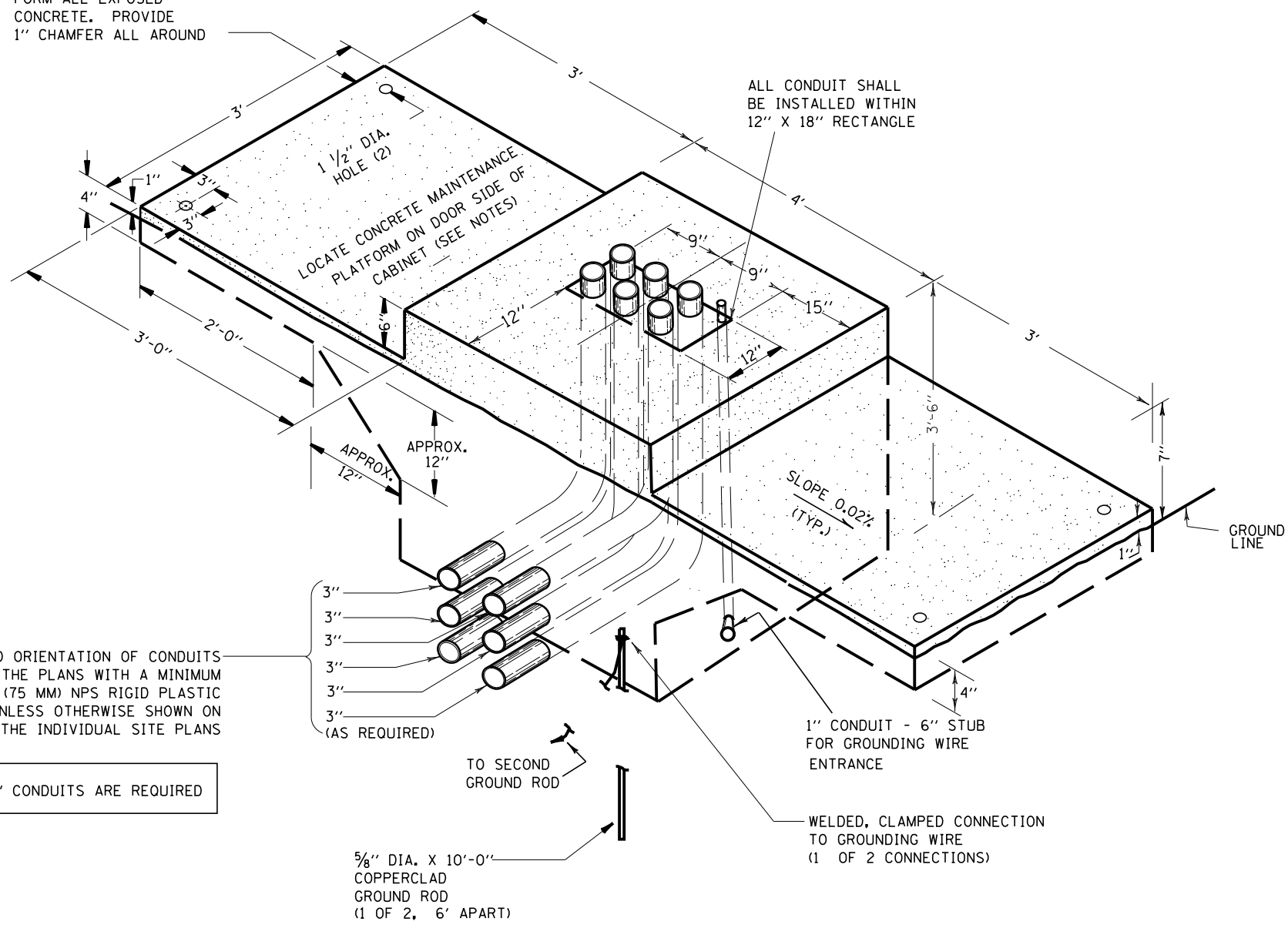


FORM ALL EXPOSED CONCRETE. PROVIDE 1" CHAMFER ALL AROUND



ALL CONDUIT SHALL BE INSTALLED WITHIN 12" X 18" RECTANGLE

LOCATE CONCRETE MAINTENANCE PLATFORM ON DOOR SIDE OF CABINET (SEE NOTES)

SLOPE 0.02% (TYP.)

GROUND LINE

NUMBER, SIZE AND ORIENTATION OF CONDUITS AS SHOWN ON THE PLANS WITH A MINIMUM OF (2) 3 INCH (75 MM) NPS RIGID PLASTIC CONDUITS UNLESS OTHERWISE SHOWN ON THE INDIVIDUAL SITE PLANS

ONLY TWO 3" CONDUITS ARE REQUIRED

3"
3"
3"
3"
3"
3"
(AS REQUIRED)

TO SECOND GROUND ROD

5/8" DIA. X 10'-0" COPPERCLAD GROUND ROD (1 OF 2, 6' APART)

1" CONDUIT - 6" STUB FOR GROUNDING WIRE ENTRANCE

WELDED, CLAMPED CONNECTION TO GROUNDING WIRE (1 OF 2 CONNECTIONS)

TYPICAL DETAIL
CONCRETE BASE, CONTROLLER CABINET

GENERAL NOTES

DETAILS OF CONSTRUCTION, MATERIALS AND WORKMANSHIP NOT SHOWN ON THIS DRAWING SHALL CONFORM TO THE PERTINENT REQUIREMENTS OF THE CONTRACT.

INSTALL FOUR- 3/4 INCH DIAMETER X 12 INCH MINIMUM LENGTH APPROVED J-BOLTS TO ANCHOR THE CABINET BASES. THE ANCHOR BOLTS SHALL BE GALVANIZED STEEL AND LOCATED AS DIRECTED BY THE ENGINEER TO PROPERLY ANCHOR THE CONTROL CABINET TO THE BASE.

WHEN REQUIRED TO CONNECT NONMETALLIC CONDUIT TO METALLIC CONDUIT, ONLY ADAPTER FITTINGS, U.L. LISTED FOR ELECTRICAL USE, SHALL BE USED.

CONDUIT HEIGHT ABOVE THE CONCRETE BASE SHALL BE 3 INCH.

DEPTH OF CONDUIT INSTALLED BELOW THE TRAVELED WAY SHALL BE 24 INCHES MINIMUM AND 36 INCHES MAXIMUM.

DEPTH OF CONDUIT INSTALLED THAT IS NOT BELOW THE TRAVELED WAY SHALL BE 24 INCHES MINIMUM AND 36 INCHES MAXIMUM.

ANY EXCEPTION TO THE MAXIMUM DEPTH SHALL BE ONLY WITH THE WRITTEN APPROVAL OF THE ENGINEER.

CONTROL CABINET BASE TOP SURFACES SHALL BE TROWEL FINISHED AND LEVEL, PRIOR TO CABINET INSTALLATION. LEVELING OF TOP SURFACES AFTER CONCRETE BASE HAS CURED SHALL ONLY BE ACCOMPLISHED BY GRINDING.

MAINTENANCE PLATFORMS ARE NOT REQUIRED WHEN THE SURROUNDING AREA IS PAVED.

MINIMUM BENDING RADIUS OF CONDUIT = 6 X THE DIAMETER.

ALL METALLIC CONDUIT ENDS SHALL BE REAMED AND THREADED.

CAP ALL BELOW GRADE METALLIC CONDUIT ENDS IN WHICH WIRE OR CABLE IS NOT BEING INSTALLED.

PLUG ALL BELOW GRADE NONMETALLIC CONDUIT ENDS IN WHICH WIRE OR CABLE IS NOT BEING INSTALLED.

ALL CONDUIT ENDS AT THE TOP OF CONCRETE BASES SHALL BE CAPPED IF METALLIC OR PLUGGED IF NONMETALLIC IMMEDIATELY AFTER PLACEMENT AND BEFORE CONCRETE IS POURED. CONDUITS IN WHICH WIRE OR CABLE IS NOT BEING INSTALLED SHALL REMAIN CAPPED OR PLUGGED.

CONCRETE FORM DEPTH BELOW FINISHED GRADE SHALL BE 6" MAXIMUM. CONCRETE FORMS SHALL BE REMOVED AFTER CONCRETE HAS SET.

ALL METALLIC CONDUIT ENDS AT TOP OF CONCRETE BASES SHALL HAVE BUSHINGS IF WIRE IS INSTALLED AND ALL NON METALLIC CONDUIT ENDS AT TOP OF CONCRETE BASES SHALL HAVE END BELLS IF WIRE IS INSTALLED.

FILE NAME =	USER NAME = tblank	DESIGNED -	REVISED -	STATE OF ILLINOIS DEPARTMENT OF TRANSPORTATION	CONCRETE FOUNDATION (SPECIAL) FOR MODEL 334 CABINET DETAIL			F.A.P. RTE.	SECTION	COUNTY	TOTAL SHEETS	SHEET NO.
...ITS (DDT)\D468620-ITS-45.dgn	DRAWN -	REVISED -	74					90-[14R(14HB-4,14,14HVB)BR]	TAZEWELL	2433	1709	
PLOT SCALE =	CHECKED -	REVISED -	CONTRACT NO. 68620				ILLINOIS FED. AID PROJECT					
PLOT DATE = 7/17/2012	DATE -	REVISED -	SCALE: NONE		SHEET NO. 45 OF 50 SHEETS	STA.			TO STA.			