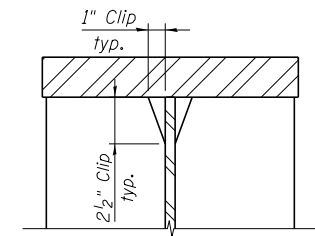
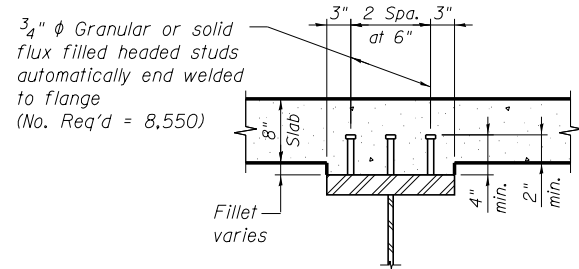


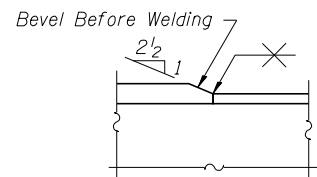
GIRDER ELEVATION



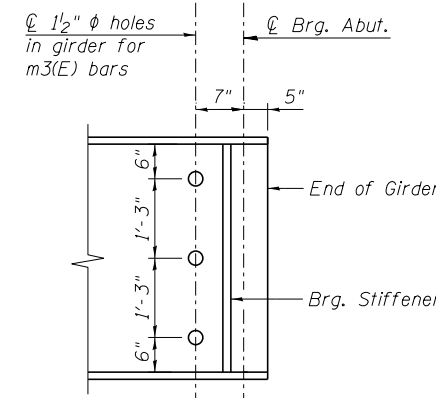
DETAIL C
(Typical top & bottom flanges)



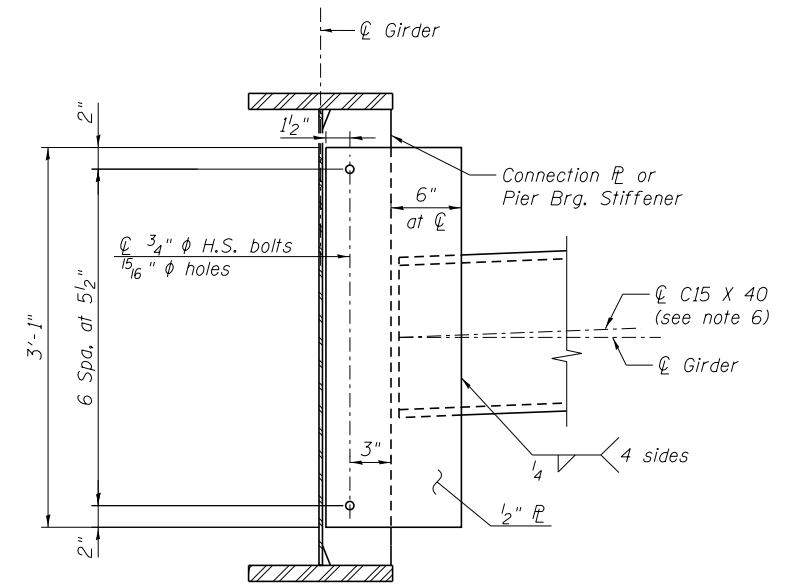
SECTION A-A



DETAIL B

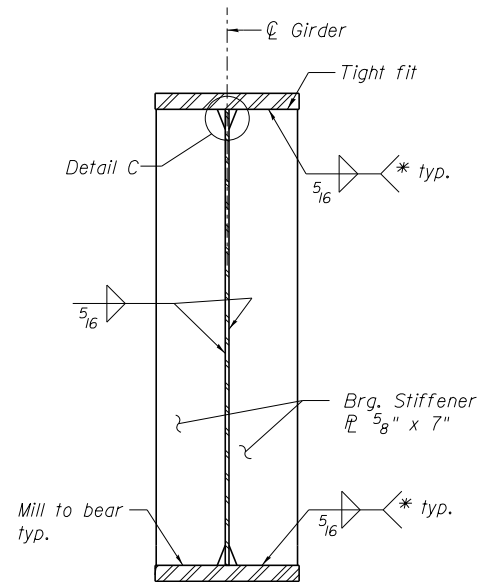


END OF GIRDER ELEVATION



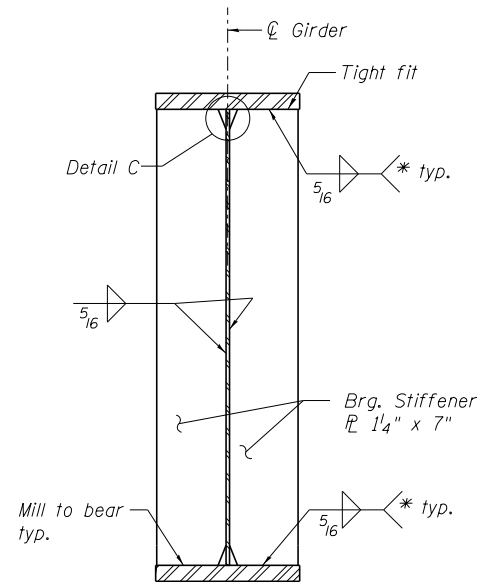
INTERIOR DIAPHRAGM

(No. diaphragms required = 88)



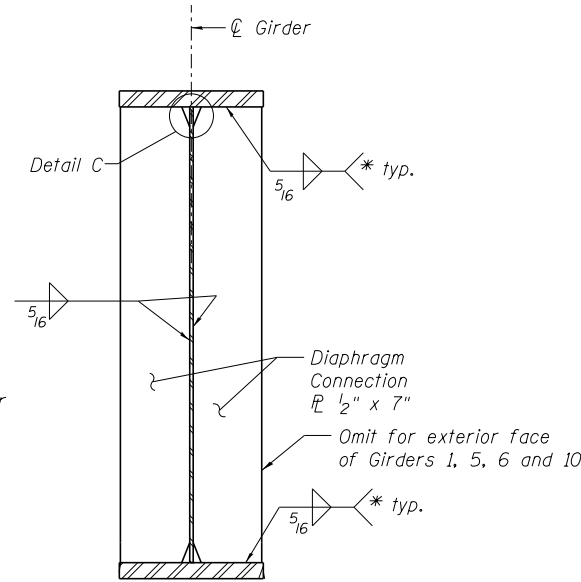
BEARING STIFFENER AT ABUT.

(No. plates required = 40)



BEARING STIFFENER AT PIER

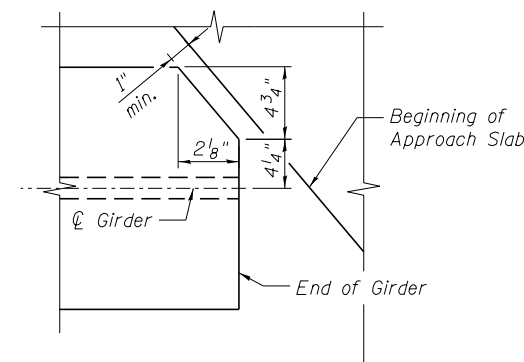
(No. plates required = 20)



CONNECTION PLATE

(No. plates required = 168)

* Terminate weld 1/4" from outside edges of plates



END OF GIRDER COPING DETAIL

(Top Flange Only)

NOTES:

- All Girder webs and flanges shall be AASHTO M270 Grade 50 steel.
- All diaphragms shall be installed as steel is erected and secured with erection pins and bolts except as otherwise noted. Individual diaphragms at supports may be temporarily disconnected to install bearing anchor rods.
- "NTR" denotes plates to which notch toughness requirements are applicable.
- Load carrying components designated "NTR" shall conform to the Impact Testing Requirements, Zone 2.
- Two hardened washers required for each set of oversized holes.
- Alternate channels C15x50 are permitted to facilitate material acquisition. Calculated weight of structural steel is based on C15x40 sections. The alternate, if utilized, shall be provided at no extra cost to the department.

FILE NAME =	USER NAME = mbecker	DESIGNED - JLS/DTS	REVISED -
		CHECKED - MRB	REVISED -
		DRAWN - PRT	REVISED -
		CHECKED - MRB	REVISED -
0900165.68620.21.stdt1.dgn	PLOT SCALE =		
	PLOT DATE = 7/16/2012		

F.A.I. RTE.	SECTION	COUNTY	TOTAL SHEETS	SHEET NO.
74	90-[14R(14HB-4,14,14HVB)BR]	TAZEWELL	2433	1885
CONTRACT NO. 68620				
ILLINOIS FED. AID PROJECT				