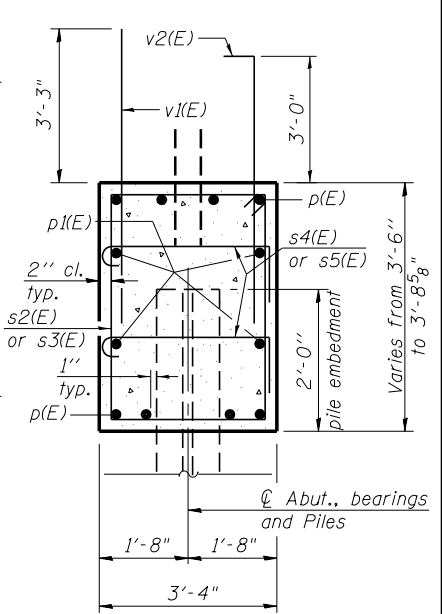
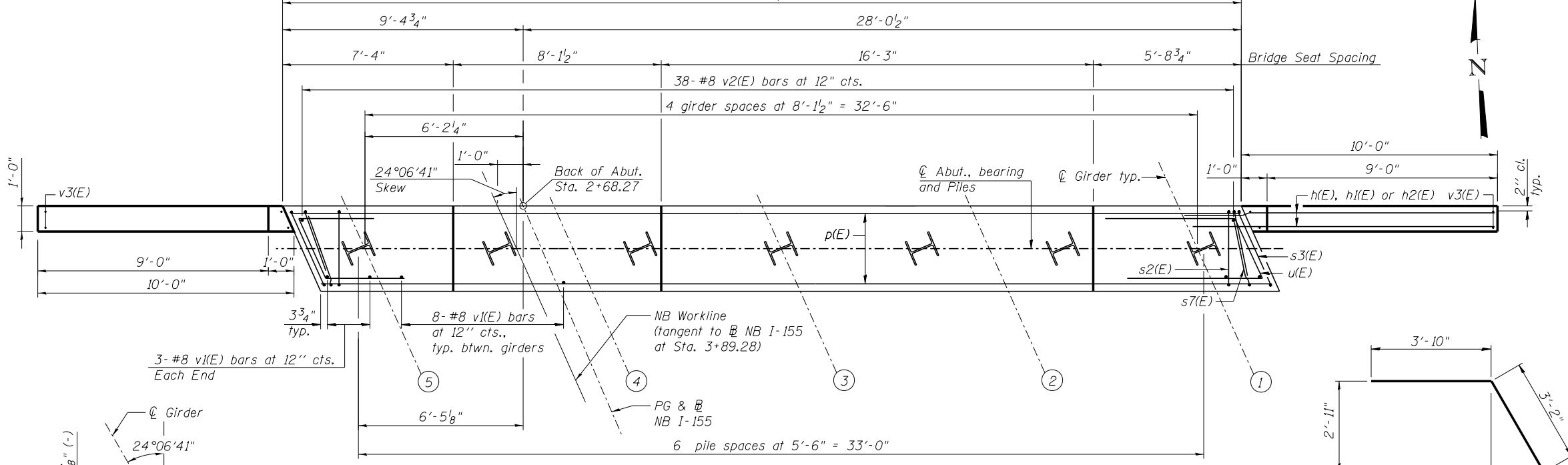


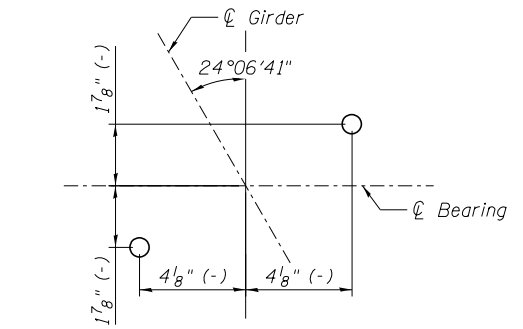
ELEVATION
(Looking North)



SEC. THRU ABUT.



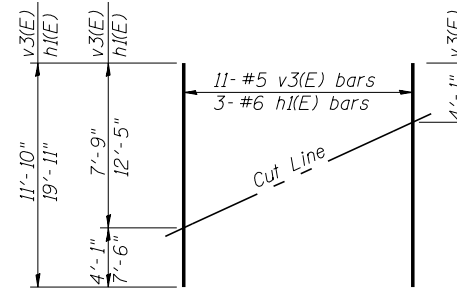
PLAN



ANCHOR BOLT DETAIL

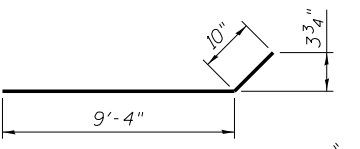
PILE DATA
Type: HP12x53
Nominal Required Bearing: 350 kips
Factored Resistance Available: 192 kips
Est. Length: 89 ft.
No. Production Piles: 7
No. Test Piles: 0

MIN BAR LAP
#5 bar = 3'-3"

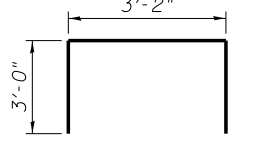


FIELD CUTTING DIAGRAM

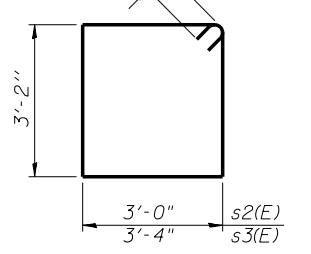
Order v3(E) & h1(E) full length. Cut as shown and use remainder of bars in opposite face.



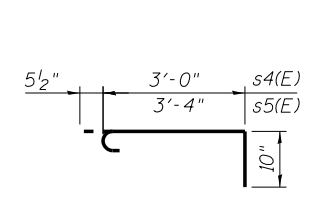
BAR h2(E)



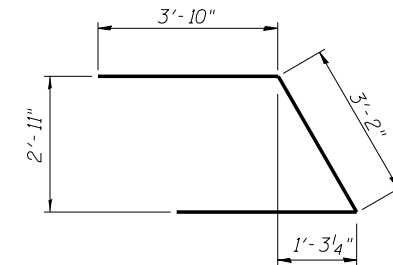
BAR s7(E)



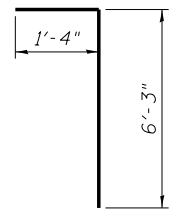
BARS s2(E) & s3(E)



BARS s4(E) & s5(E)



BAR u(E)



BAR v2(E)

BILL OF MATERIAL

Bar	No.	Size	Length	Shape
h(E)	40	#6	12'-5"	—
h1(E)	6	#6	19'-11"	—
h2(E)	4	#6	10'-2"	—
p(E)	8	#7	36'-11"	—
p1(E)	8	#5	20'-1"	—
s2(E)	32	#5	13'-3"	□
s3(E)	2	#5	13'-11"	□
s4(E)	64	#5	4'-4"	□
s5(E)	8	#5	4'-8"	□
s7(E)	4	#5	9'-2"	□
u(E)	8	#6	10'-10"	□
v1(E)	38	#8	6'-6"	—
v2(E)	38	#8	7'-7"	—
v3(E)	22	#5	11'-10"	—
Concrete Structures	Cu. Yd.	21.4		
Reinforcement Bars, Epoxy Coated	Pound	4,430		
Furnishing Steel Piles HP12x53	Foot	623		
Driving Piles	Foot	623		

NOTES:

- For details of piles, see sheet SA30.
- Pour steps monolithically with cap.
- Adjust s7(E) bars in field to form a single closed stirrup between the s2(E) bar and the s3(E) bar.
- h1(E) or h2(E) bars shall not be embedded in the approach slab.
- Adjust bar spacing to avoid anchor bolt locations.

benesch
engineers · scientists · planners
Alfred Benesch & Company
205 North Michigan Avenue, Suite 2400
Chicago, Illinois 60601
312-565-0450 Job No. 10056

FILE NAME =	USER NAME = mbecker	DESIGNED - DTS	REVISIONS -
0900165.68620.24_abut1.dgn		CHECKED - SLD	REVISIONS -
		PLOT SCALE =	REVISIONS -
		PLOT DATE = 7/16/2012	REVISIONS -

STATE OF ILLINOIS
DEPARTMENT OF TRANSPORTATION

NB NORTH ABUTMENT DETAILS
STRUCTURE NO. 090-0165 / 0166

SHEET NO. SA24 OF SA47 SHEETS

F.A.I. RTE.	SECTION	COUNTY	TOTAL SHEETS	SHEET NO.
74	90-[14R(14H-4,14,14HVB)BR]	TAZEWELL	2433	1888
CONTRACT NO. 68620				
ILLINOIS FED. AID PROJECT				

10:53:24 AM x:\10000s\10056\engineer\ing-documents\phase-1\1155over\74\final\0900165.68620.24_abut1.dgn 7/16/2012