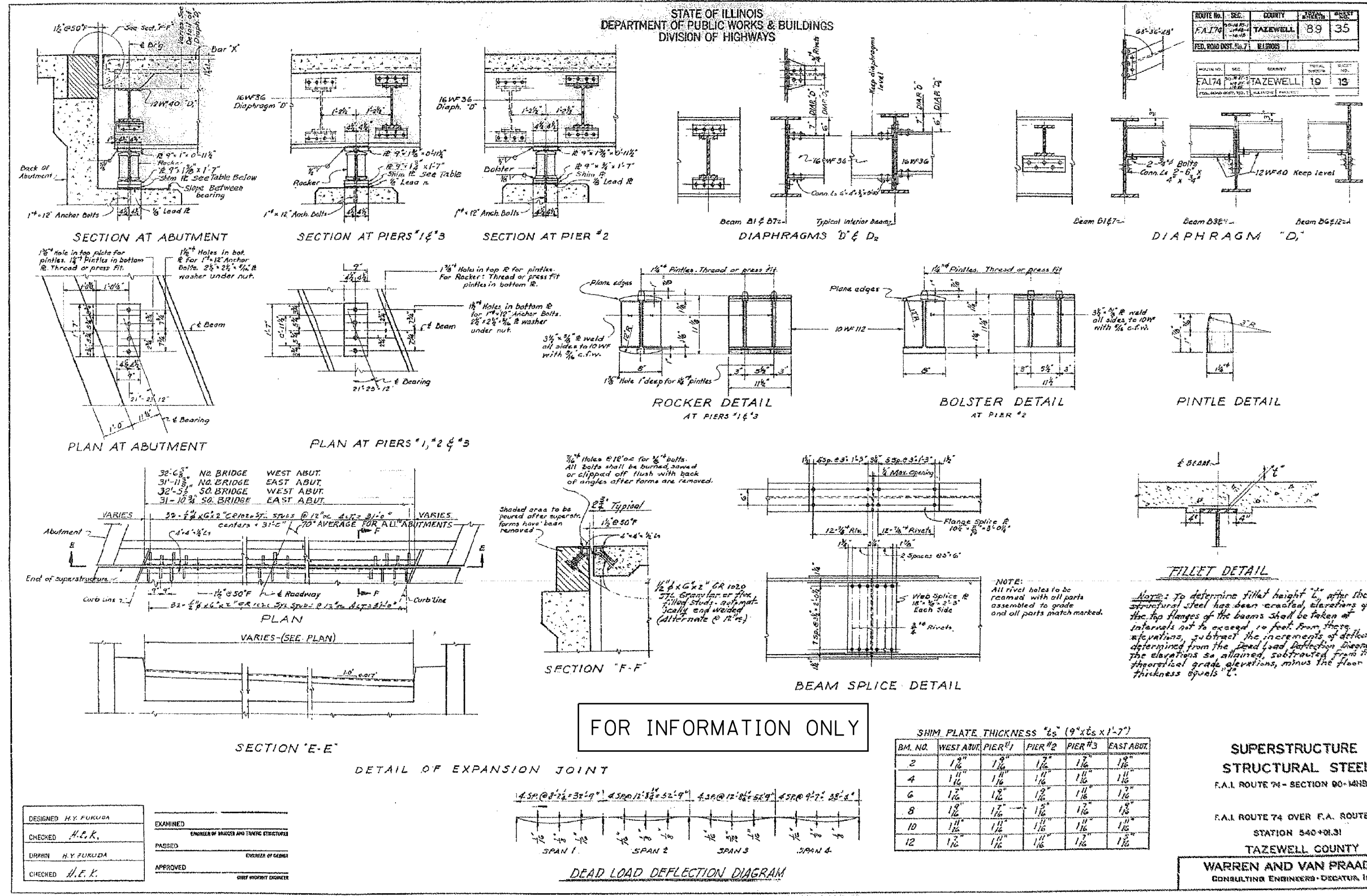


STATE OF ILLINOIS  
DEPARTMENT OF PUBLIC WORKS & BUILDINGS  
DIVISION OF HIGHWAYS

ROUTE NO.	SEC.	COUNTY	SHEET	TOTAL SHEETS
74	90	TAZEWELL	89	35

ROUTE NO.	SEC.	COUNTY	SHEET	TOTAL SHEETS
74	90	TAZEWELL	19	13



32'-6"	NO. BRIDGE	WEST ABUT.
31'-11 1/2"	NO. BRIDGE	EAST ABUT.
32'-5 1/2"	SO. BRIDGE	WEST ABUT.
31'-10 3/4"	SO. BRIDGE	EAST ABUT.

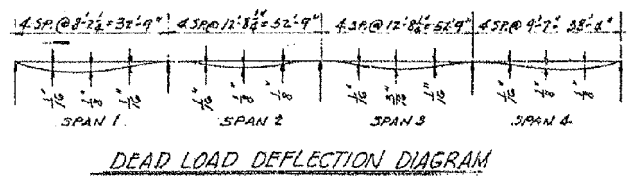
FOR INFORMATION ONLY

SHIM PLATE THICKNESS "t<sub>s</sub>" (9" x 6 1/2" x 1'-7")

BM. NO.	WEST ABUT.	PIER #1	PIER #2	PIER #3	EAST ABUT.
2	1 1/16"	1 1/16"	1 1/16"	1 1/16"	1 1/16"
4	1 1/16"	1 1/16"	1 1/16"	1 1/16"	1 1/16"
6	1 1/16"	1 1/16"	1 1/16"	1 1/16"	1 1/16"
8	1 1/16"	1 1/16"	1 1/16"	1 1/16"	1 1/16"
10	1 1/16"	1 1/16"	1 1/16"	1 1/16"	1 1/16"
12	1 1/16"	1 1/16"	1 1/16"	1 1/16"	1 1/16"

**SUPERSTRUCTURE  
STRUCTURAL STEEL**  
F.A.I. ROUTE 74 - SECTION 90-14NS-4  
F.A.I. ROUTE 74 OVER F.A. ROUTE 73  
STATION 540+01.31  
TAZEWELL COUNTY  
WARREN AND VAN PRAAG, INC.  
CONSULTING ENGINEERS - DECATUR, ILLINOIS

DESIGNED	H.Y. FUKUDA	EXAMINED	
CHECKED	H.E.K.	ENGINEER OF BRIDGES AND TRUSS STRUCTURES	
DRAWN	H.Y. FUKUDA	PASSED	
CHECKED	H.E.K.	ENGINEER OF GEOTECHNICAL	
		APPROVED	
		CITY ENGINEER	



FILE NAME =	USER NAME = mbecker	DESIGNED - MFB	REVISED -
		CHECKED - MRB	REVISED -
		DRAWN - PRT	REVISED -
		CHECKED - MRB	REVISED -
PLOT SCALE =			
PLOT DATE = 7/16/2012			

F.A.I. R.T.E.	SECTION	COUNTY	TOTAL SHEETS	SHEET NO.
74	90-114R(14HB-4,14,14HB)BRJ	TAZEWELL	2433	1907
			CONTRACT NO. 68620	
ILLINOIS FED. AID PROJECT				

10:55:25 AM x:\10000s\10056\engineer\ing-documents\phase-1\1155over-74\final\0900165-68620-43\_exist6.dgn 7/16/2012