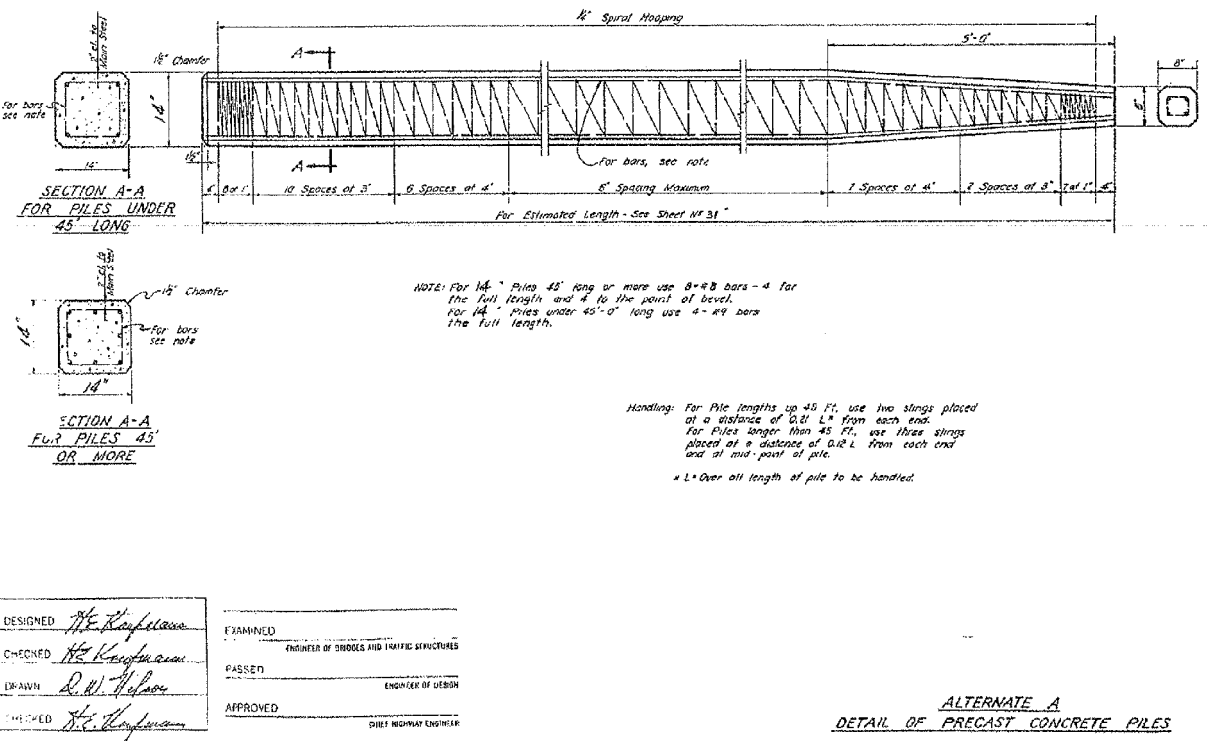
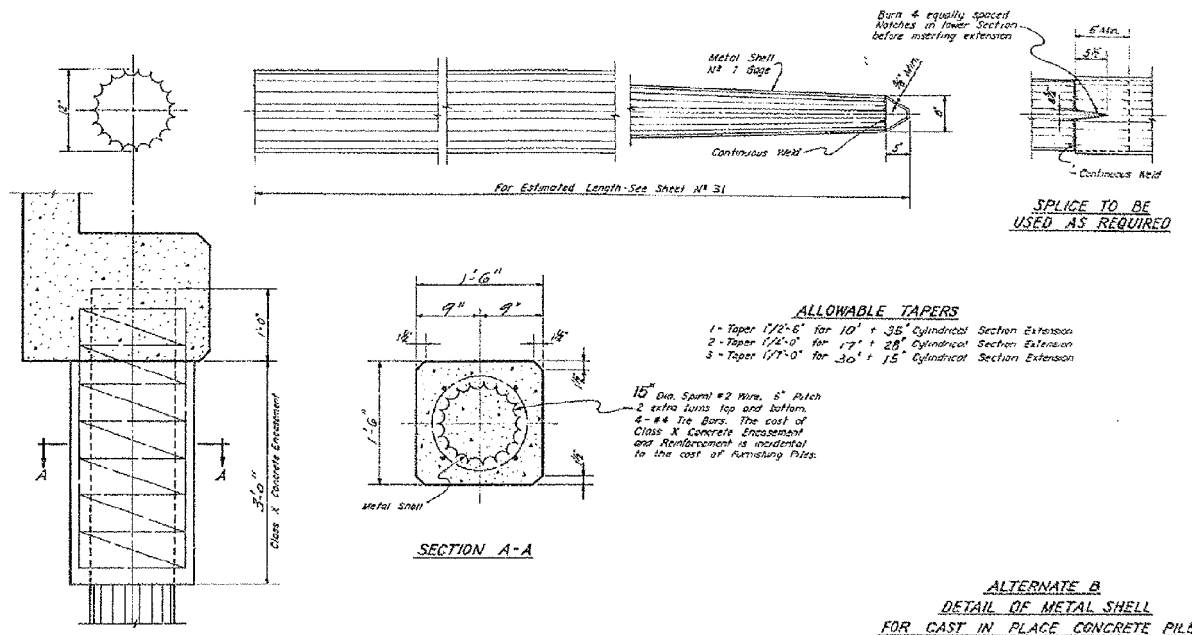
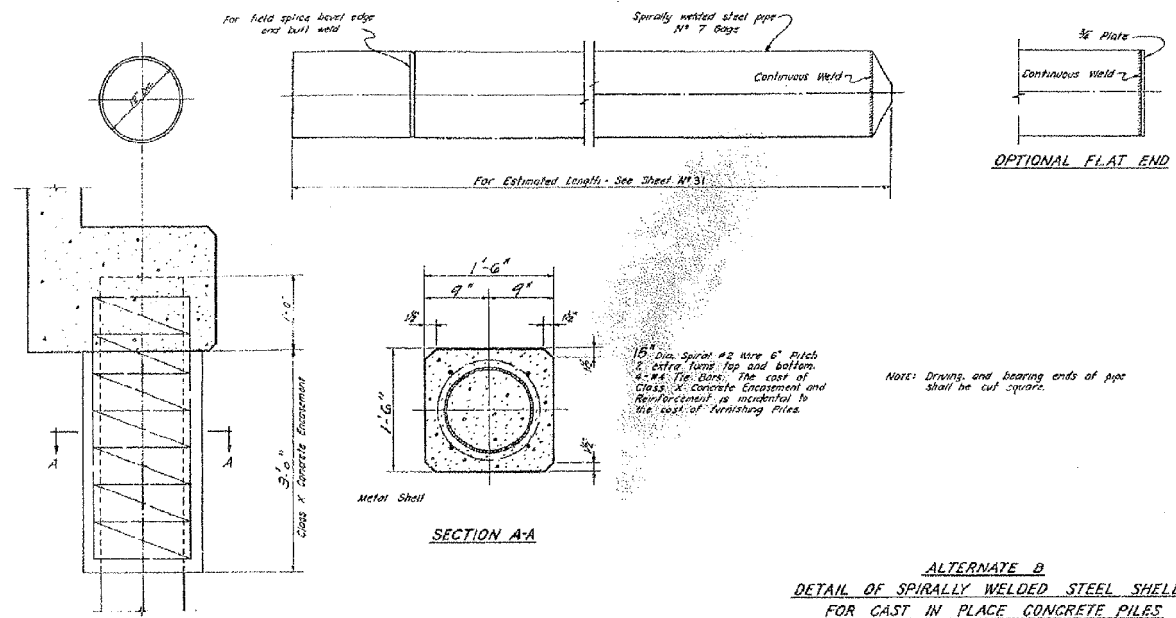


STATE OF ILLINOIS
DEPARTMENT OF PUBLIC WORKS & BUILDINGS
DIVISION OF HIGHWAYS

ROUTE No.	SEC.	COUNTY	TOTAL SHEETS	SHEET NO.
F.A. 74	90-14HB-4	TAZEWELL	89	39
FED. ROAD DIST. NO. 7 ILLINOIS				



FOR INFORMATION ONLY

PILE DETAILS
F.A.I. ROUTE 74 - SECTION 90-14HB-4
F.A.I. ROUTE 74 OVER R.A. ROUTE 73
STATION 540+01.31
TAZEWELL COUNTY
WARREN AND VAN PRAAG, INC.
CONSULTING ENGINEERS - DECATUR, ILLINOIS

FILE NAME =	USER NAME = mbecker	DESIGNED - MFB	REVISED -
0900165.68620.47.exist10.dgn	PLOT SCALE =	CHECKED - MRB	REVISED -
	PLOT DATE = 7/16/2012	DRAWN - PRT	REVISED -
		CHECKED - MRB	REVISED -

F.A.I. RTE.	SECTION	COUNTY	TOTAL SHEETS	SHEET NO.
74	90-14R(14HB-4,14,14HB)BR	TAZEWELL	2433	1911
				CONTRACT NO. 68620
ILLINOIS FED. AID PROJECT				

10:56:12 AM x:\10000s\10056\engineer\ing-documents\phase-1\155\over-174\final\0900165-68620-47-exist10.dgn 7/16/2012