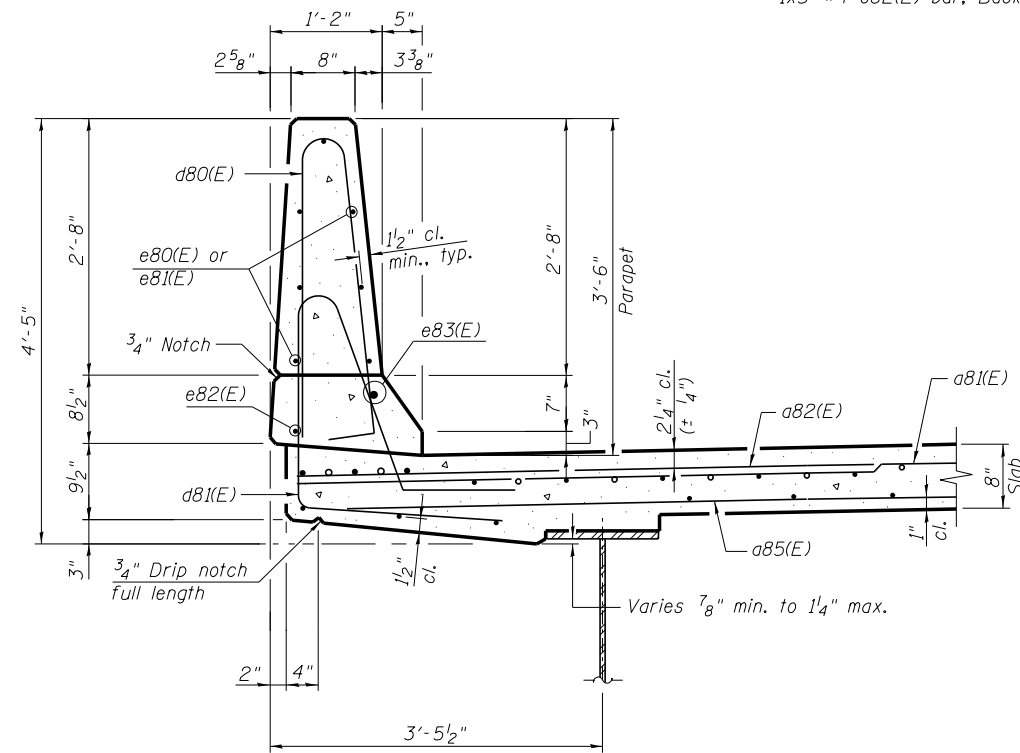
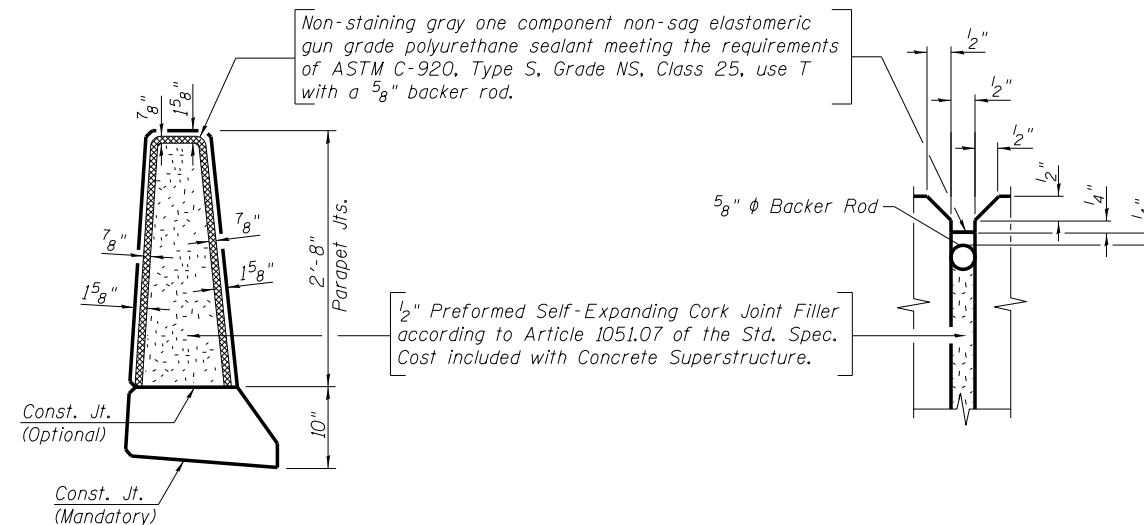


INSIDE ELEVATION OF PARAPET
(2 Thus)



SECTION THRU PARAPET

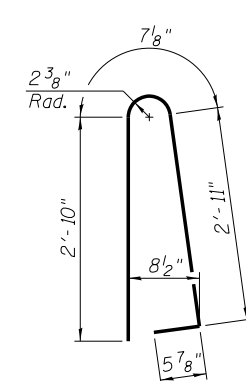


PARAPET JOINT DETAILS

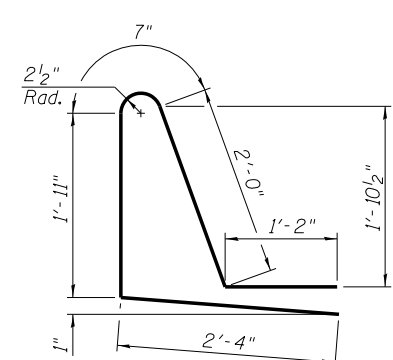
**SUPERSTRUCTURE
BILL OF MATERIAL**

Bar	No.	Size	Length	Shape
a80(E)	478	#5	31'-0"	—
a81(E)	602	#5	43'-4"	—
a82(E)	602	#6	6'-6"	—
a83(E)	66	#8	15'-5"	—
a84(E)	80	#8	27'-9"	—
a85(E)	354	#5	43'-0"	—
b80(E)	500	#5	33'-9"	—
b81(E)	485	#5	27'-9"	—
d80(E)	274	#5	6'-10"	—
d81(E)	274	#5	8'-0"	—
d82(E)	143	#5	9'-3"	—
d83(E)	286	#5	3'-5"	—
e80(E)	46	#4	14'-8"	—
e81(E)	115	#4	18'-8"	—
e82(E)	10	#4	26'-9"	—
e83(E)	16	#8	35'-3"	—
e84(E)	18	#4	2'-0"	—
e85(E)	4	#8	2'-0"	—
x80(E)	208	#5	7'-7"	—
x81(E)	208	#5	4'-1"	—
Concrete Superstructure		Cu. Yd.		503.1
Reinforcement Bars, Epoxy Coated		Pound		117,130

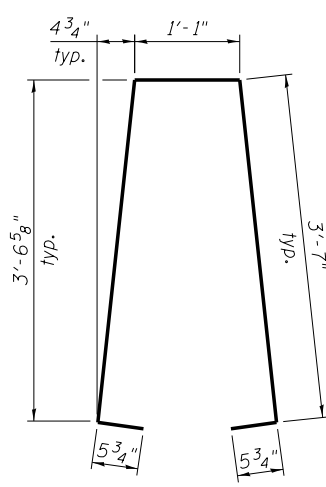
Bars indicated thus 20x3-#5 etc. indicates 20 lines of bars with 3 lengths per line.



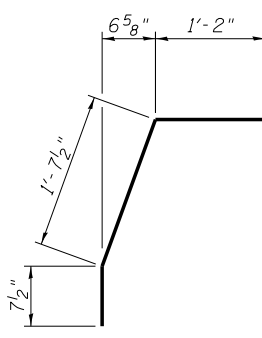
BAR d80(E)



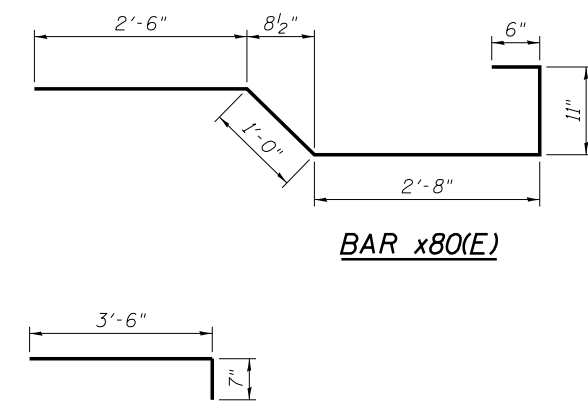
BAR d81(E)



BAR d82(E)



BAR d83(E)



BAR x80(E)

MINIMUM BAR LAP (Deck)
#5 bar = 3'-3"
#8 bar = 5'-2"

MINIMUM BAR LAP (Parapet)
#4 bar = 2'-0"
#8 bar = 5'-2"

benesch
engineers · scientists · planners
Alfred Benesch & Company
205 North Michigan Avenue, Suite 2400
Chicago, Illinois 60601
312-565-0450 Job No. 10056

FILE NAME = 0900167.68620.17.dkt2.dgn	USER NAME = mbecker	DESIGNED - MFB	REVISED -
		CHECKED - MRB	REVISED -
	PLOT SCALE =	DRAWN - PRT	REVISED -
	PLOT DATE = 7/16/2012	CHECKED - MRB	REVISED -

**STATE OF ILLINOIS
DEPARTMENT OF TRANSPORTATION**

**SUPERSTRUCTURE DETAILS 2 OF 3
STRUCTURE NO. 090-0167**
SHEET NO. SB17 OF SB65 SHEETS

F.A.I. RT.E.	SECTION	COUNTY	TOTAL SHEETS	SHEET NO.
74	90-[14R;14HB-4,14,14HV;B]BR	TAZEWELL	2433	1928
CONTRACT NO. 68620			ILLINOIS FED. AID PROJECT	

x:\100000s\10056\engineer\ing-documents\phase-1\174over\Jefferson\Final\0900167.68620.17.dkt2.dgn 11:08:27 AM 7/16/2012