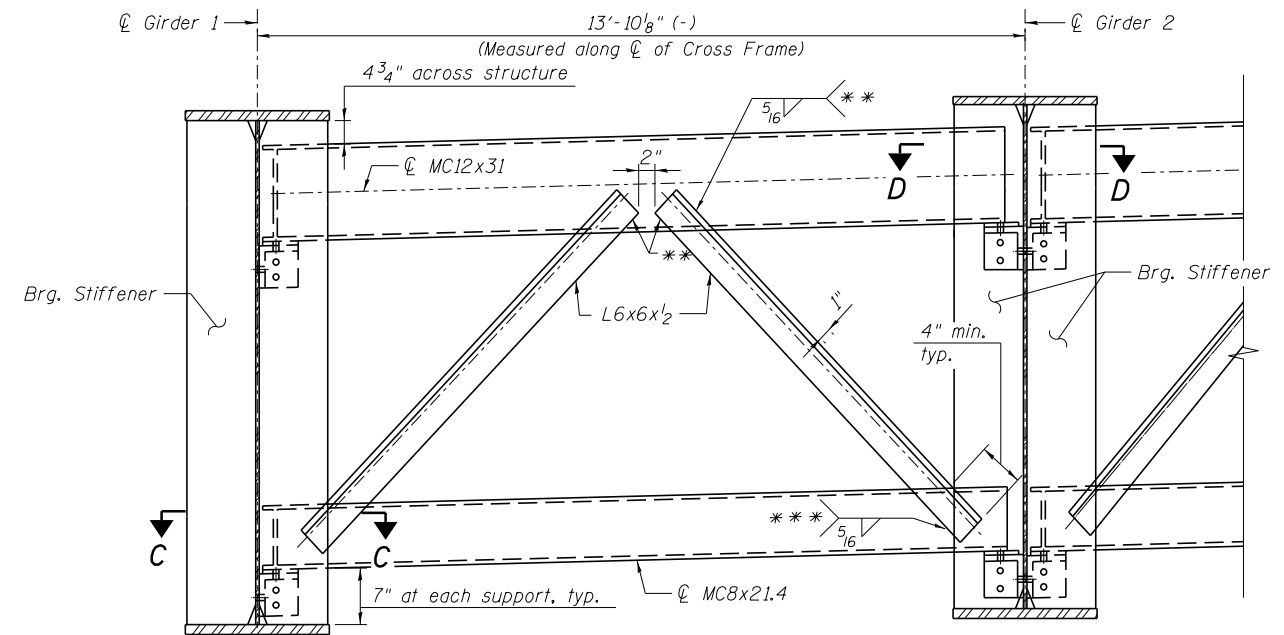
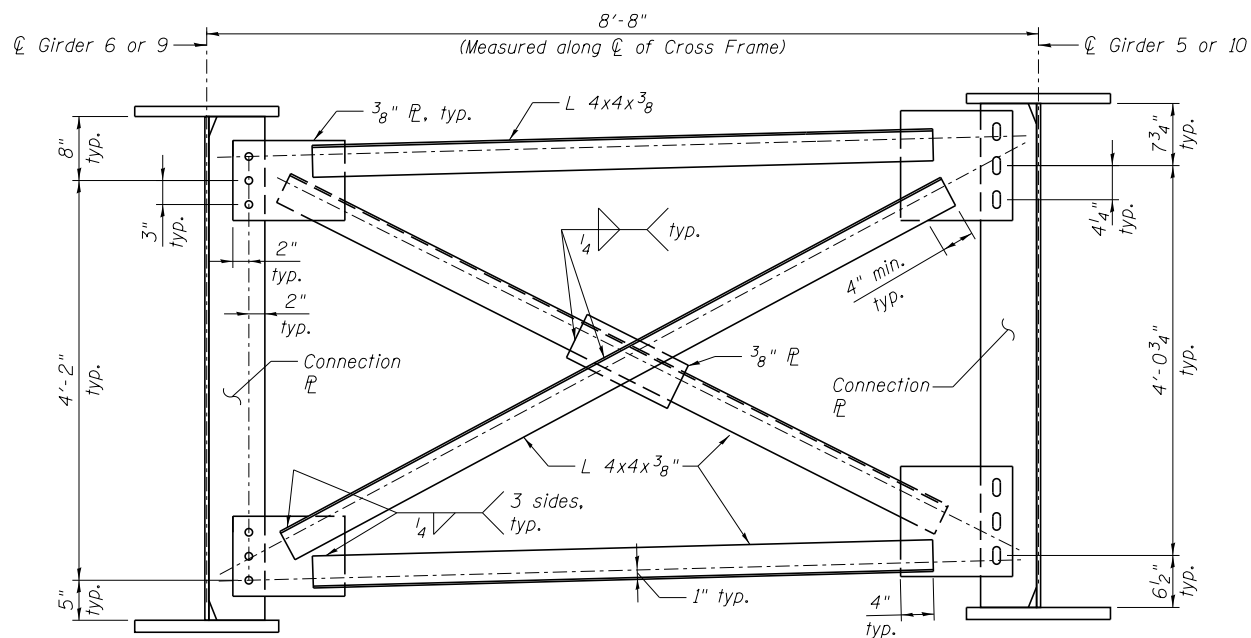


INTERIOR CROSS FRAME CF1
(No. cross frames required = 46)



END CROSS FRAME CF3
(No. cross frames required = 26)

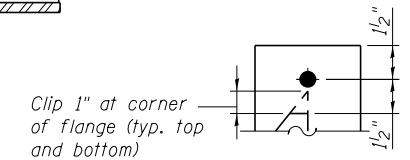


INTERIOR CROSS FRAME CF2
(No. cross frames required = 8)

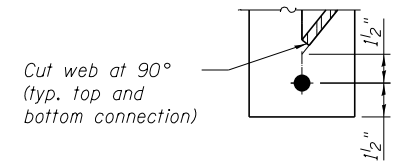
NOTES:

- All cross frames shall be installed as steel is erected and secured with erection pins and bolts except as otherwise noted. Individual cross frames at supports may be temporarily disconnected to install bearing anchor rods.
- Two hardened washers required for each set of oversized holes.
- Place diaphragm with channel flanges outward from abutment backwall.
- See sheet SB27 for slotted hole details related to Interior Cross Frame CF2.

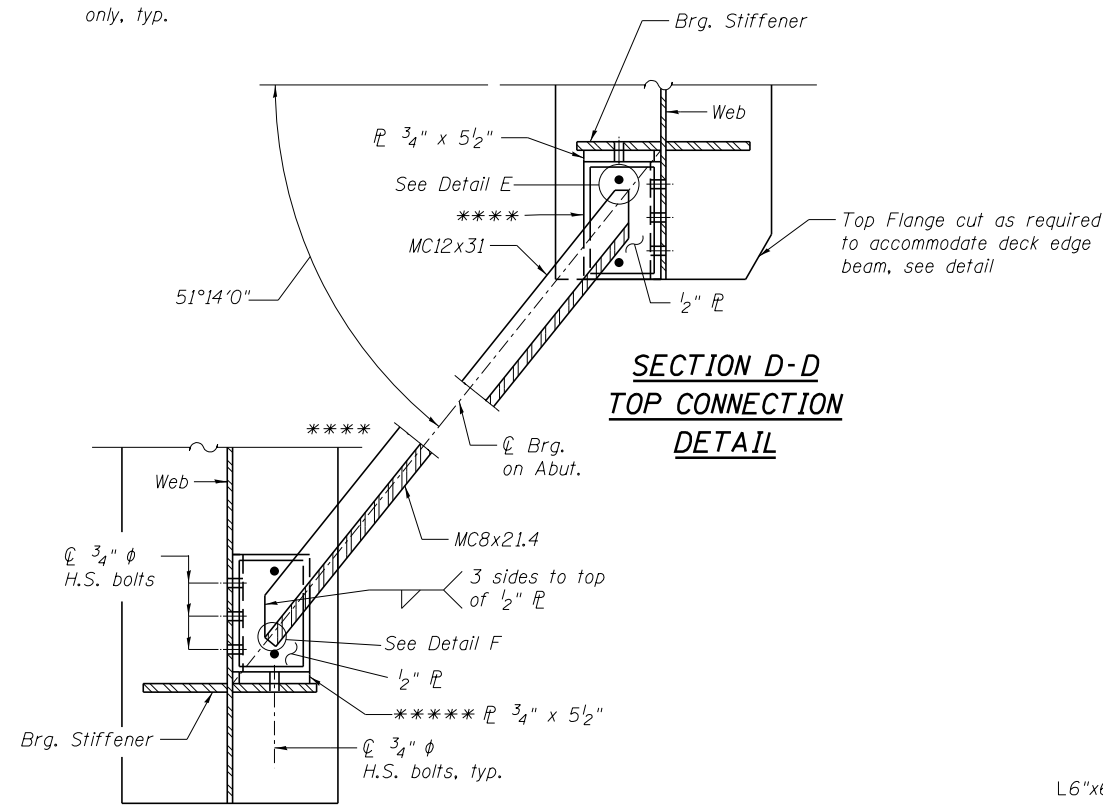
- ** Use a minimum 2 bolt connection for stage construction
- *** 3 sides, to back face of channel only, typ.



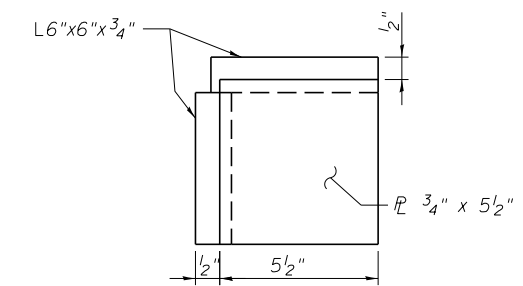
DETAIL E



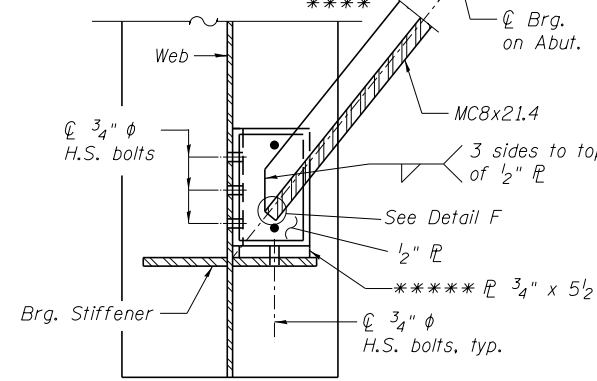
DETAIL F



**SECTION D-D
TOP CONNECTION
DETAIL**

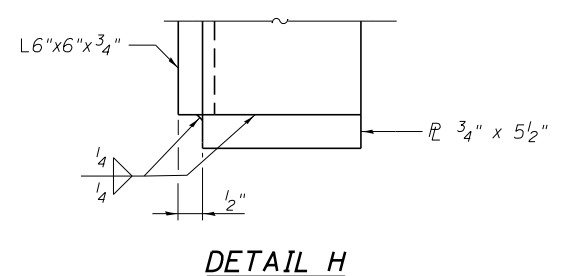


DETAIL G



**SECTION C-C
BOTTOM CONNECTION
DETAIL**

- **** Use L6"x6"x3/4"
- ***** Weld 3/4" x 5 1/2" plate to seat as shown in Detail G and Detail H



DETAIL H

USER NAME = mbecker	DESIGNED - MFB/AWH	REVISED -
	CHECKED - MRB	REVISED -
	DRAWN - PRT	REVISED -
	CHECKED - MRB	REVISED -

F.A.I. R.T.E.	SECTION	COUNTY	TOTAL SHEETS	SHEET NO.
74	90-[14R(14HB-4,14,14HV)BR]	TAZEWELL	2433	1937
CONTRACT NO. 68620				
ILLINOIS FED. AID PROJECT				