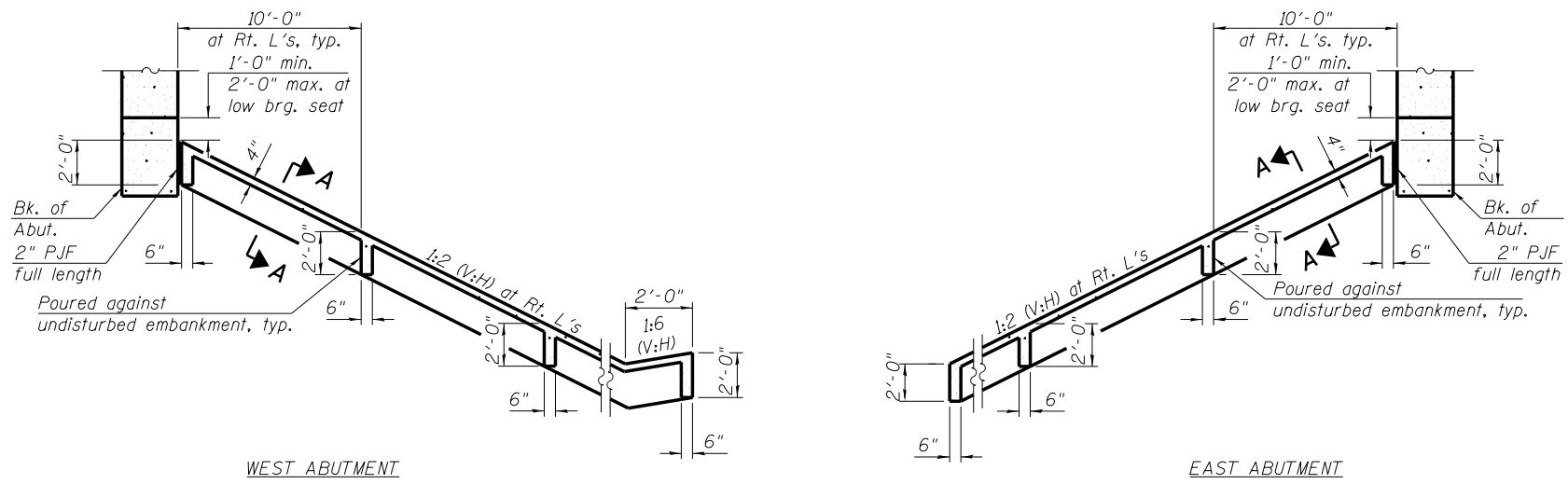


SECTION THRU ABUTMENT
(Horizontal dim. at Rt. L's)

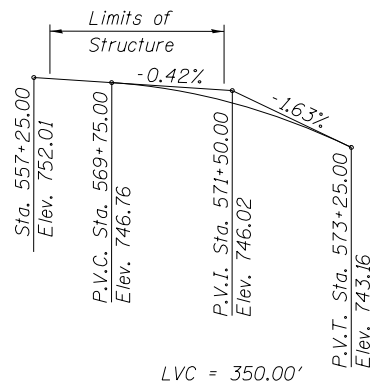
*Included in the cost of Pipe Underdrains for Structures.

Note:
All drainage system components shall extend to 2'-0" from the end of each wingwall except an outlet pipe shall extend until intersecting with the side slopes. The pipes shall drain into concrete headwalls. (See Article 601.05 of the Standard Specifications and Highway Standard 601101).

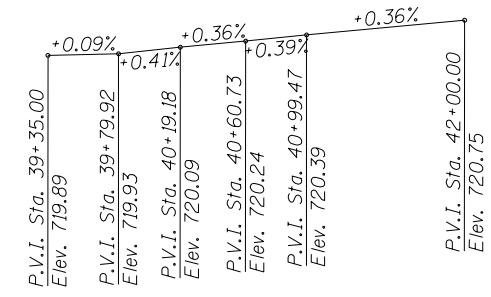


SLOPEWALL DETAILS

(Slope wall shall be reinforced with welded wire fabric, 6 in. x 6 in. - W4.0 x W4.0, weighing 58 lbs. per 100 sq. ft.)



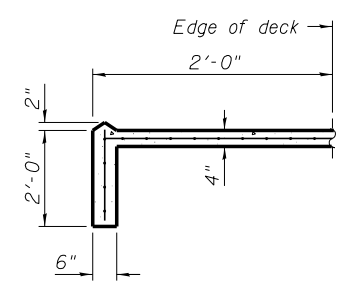
PROFILE GRADE
(@ I-74 EB & WB)



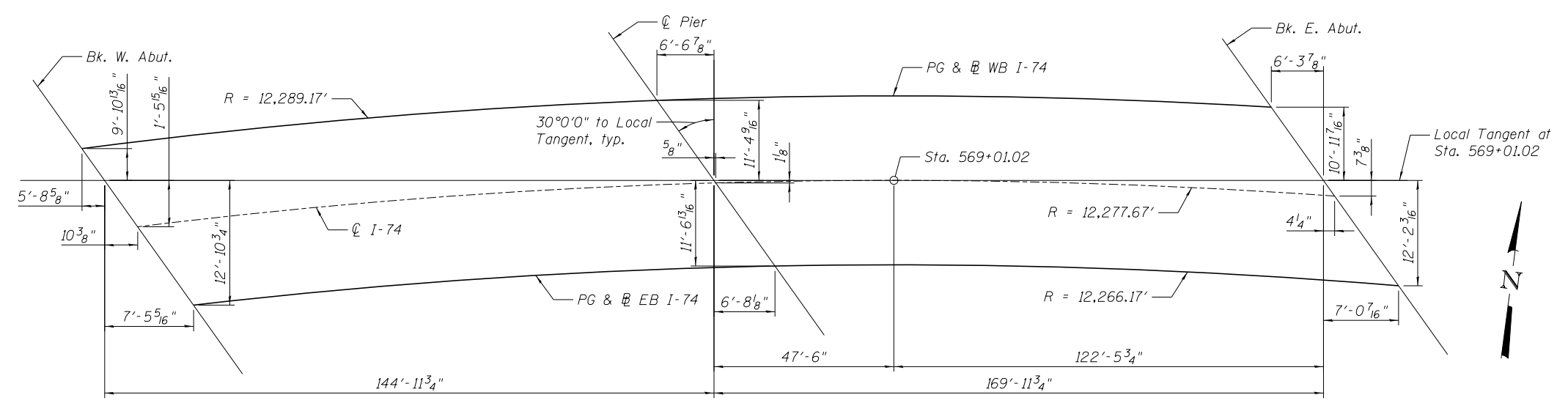
PROFILE GRADE
(@ US 150)

CURVE DATA @ I-74

$\Delta = 13^{\circ}36'59"$ (RT)
 $D = 0^{\circ}28'00"$
 $T = 1,465.80'$
 $L = 2,917.79'$
 $E = 87.19'$
 $R = 12,277.67'$
 $S.E. = RC$
 $P.C. = Sta. 562+26.87$
 $P.T. = Sta. 591+44.66$
 $P.I. = Sta. 576+92.67$



SECTION A-A



OFFSET SKETCH

benesch
engineers · scientists · planners
Alfred Benesch & Company
205 North Michigan Avenue, Suite 2400
Chicago, Illinois 60601
312-565-0450 Job No. 10056

FILE NAME = 0900169.68620.03.gndt2.dgn
PLOT SCALE =
PLOT DATE = 7/16/2012

USER NAME = mbecker	DESIGNED - MFB/DTS	REVISD -
	CHECKED - MRB/AAAY	REVISD -
	DRAWN - MFB	REVISD -
	CHECKED - MRB	REVISD -

STATE OF ILLINOIS
DEPARTMENT OF TRANSPORTATION

GENERAL DATA 2 OF 2
STRUCTURE NO. 090-0169

SHEET NO. SC3 OF SC63 SHEETS

F.A.I. RTE. 74	SECTION 90-[14R;14HB-4;14.14HVB]BR	COUNTY TAZEWELL	TOTAL SHEETS 2433	SHEET NO. 1979
CONTRACT NO. 68620			ILLINOIS FED. AID PROJECT	

x:\10000s\10056\engineer\ing-documents\phase-1\174over\Jackson\Final\0900169.68620.03.gndt2.dgn 11:19:08 AM 7/16/2012