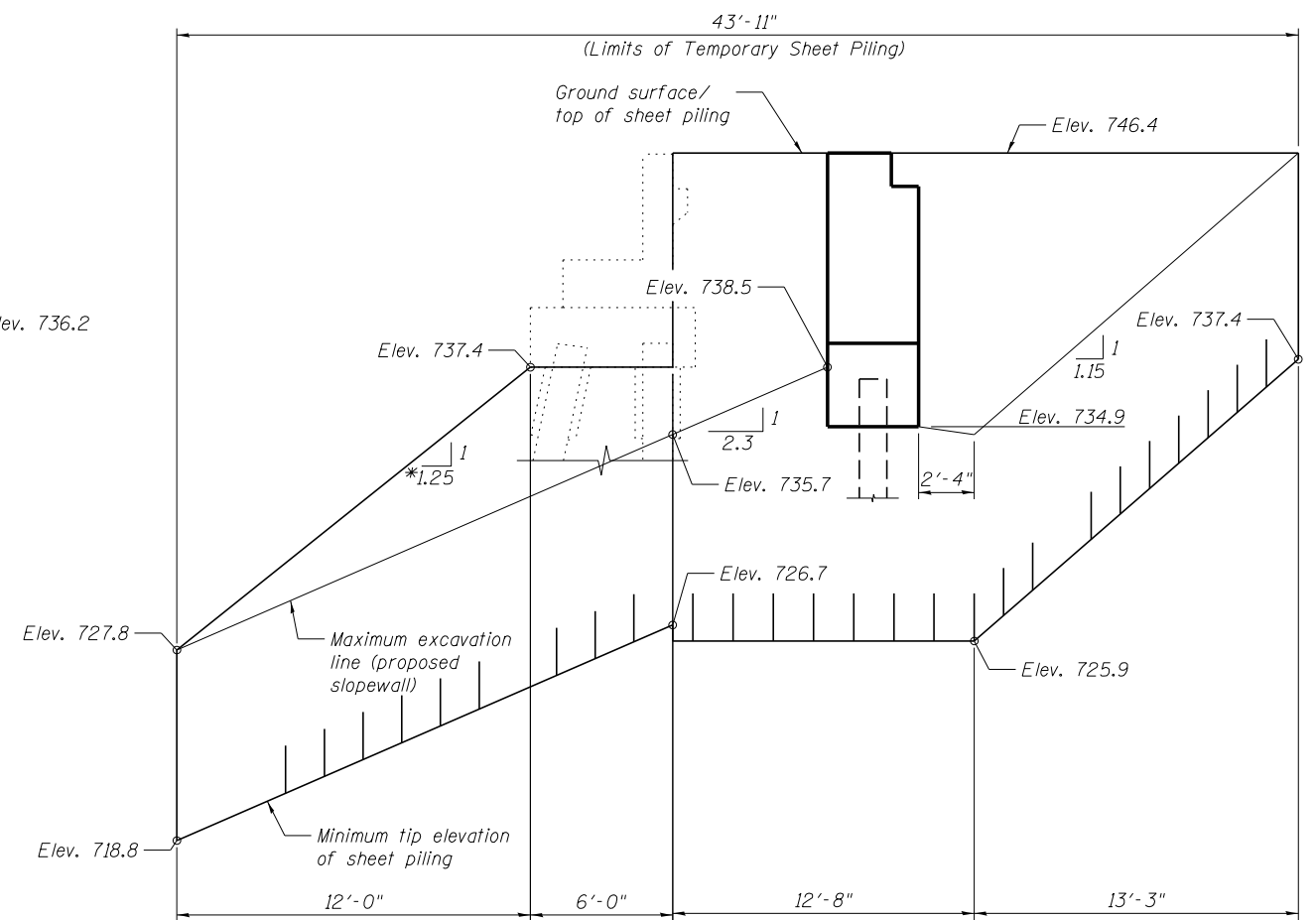
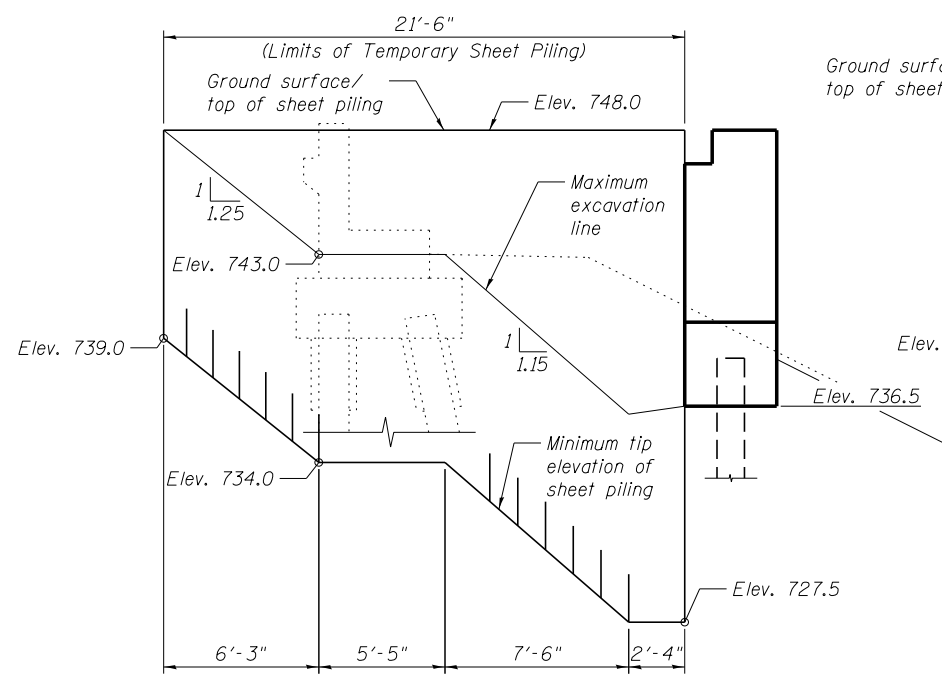


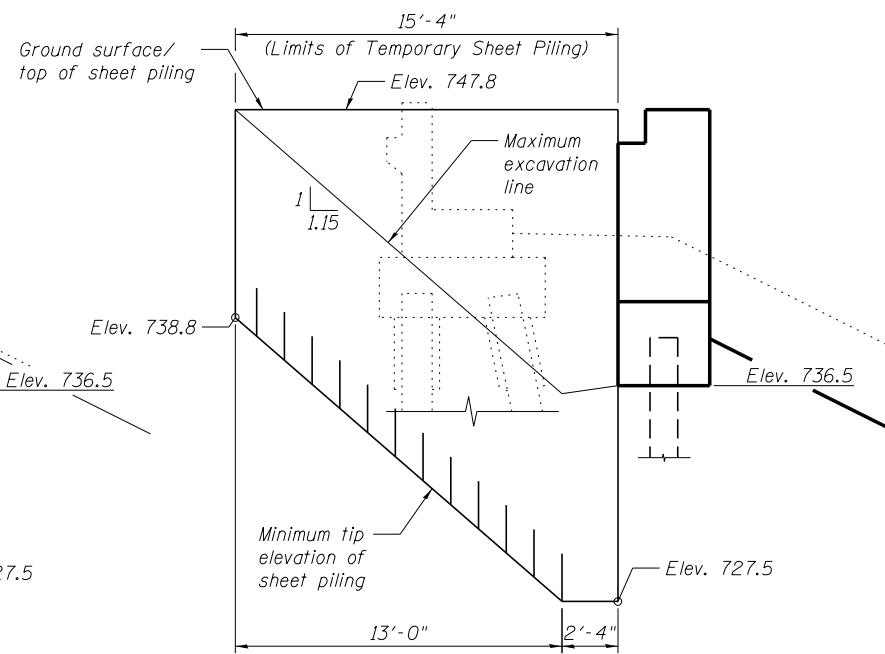
EAST ABUTMENT (N. STAGE CONST. LINE)
(Minimum Section Modulus = 15.9 cu. in./ft.)



EAST ABUTMENT (S. STAGE CONST. LINE)
(Minimum Section Modulus = 9.9 cu. in./ft.)



WEST ABUTMENT (N. STAGE CONST. LINE)
(Minimum Section Modulus = 9.9 cu. in./ft.)



WEST ABUTMENT (S. STAGE CONST. LINE)
(Minimum Section Modulus = 9.9 cu. in./ft.)

*Existing slopewall elevation is higher than proposed slopewall elevation at East Abutment. Assume that existing slopewall north and south of Stage 1 will be graded away at 1:1 (V:H) in order to reduce sheeting.

BILL OF MATERIAL

| ITEM | UNIT | TOTAL |
|------------------------|---------|-------|
| Temporary Sheet Piling | Sq. Ft. | 2,253 |
| | | |
| | | |

NOTES:

1. If the Contractor chooses to alter the temporary cantilever sheet piling design requirements shown on the plans, a design submittal including plan details and calculations will be required for review and acceptance by the Engineer.
2. All slope grades shown are measured along the length of the temporary sheet piling.
3. Existing bridge abutments are skewed approximately 37 degrees from the temporary sheet piling and the proposed bridge abutments are skewed 30 degrees from the temporary sheet piling.

benesch
engineers · scientists · planners
Alfred Benesch & Company
205 North Michigan Avenue, Suite 2400
Chicago, Illinois 60601
312-565-0450 Job No. 10056

| | | | |
|--------------------------|-----------------------|----------------|-----------|
| FILE NAME = | USER NAME = mbecker | DESIGNED - MFB | REVISED - |
| 0900169.68620.07.sht.dgn | | CHECKED - MRB | REVISED - |
| | PLOT SCALE = | DRAWN - MFB | REVISED - |
| | PLOT DATE = 7/16/2012 | CHECKED - MRB | REVISED - |

STATE OF ILLINOIS
DEPARTMENT OF TRANSPORTATION

TEMPORARY SHEETING DETAILS
STRUCTURE NO. 090-0169

SHEET NO. SC7 OF SC63 SHEETS

| | | | | |
|---------------------------|-----------------------------|----------|--------------------|-----------|
| F.A.I. RTE. | SECTION | COUNTY | TOTAL SHEETS | SHEET NO. |
| 74 | 90-[14R(14HB-4,14,14HVB)BR] | TAZEWELL | 2433 | 1983 |
| | | | CONTRACT NO. 68620 | |
| ILLINOIS FED. AID PROJECT | | | | |