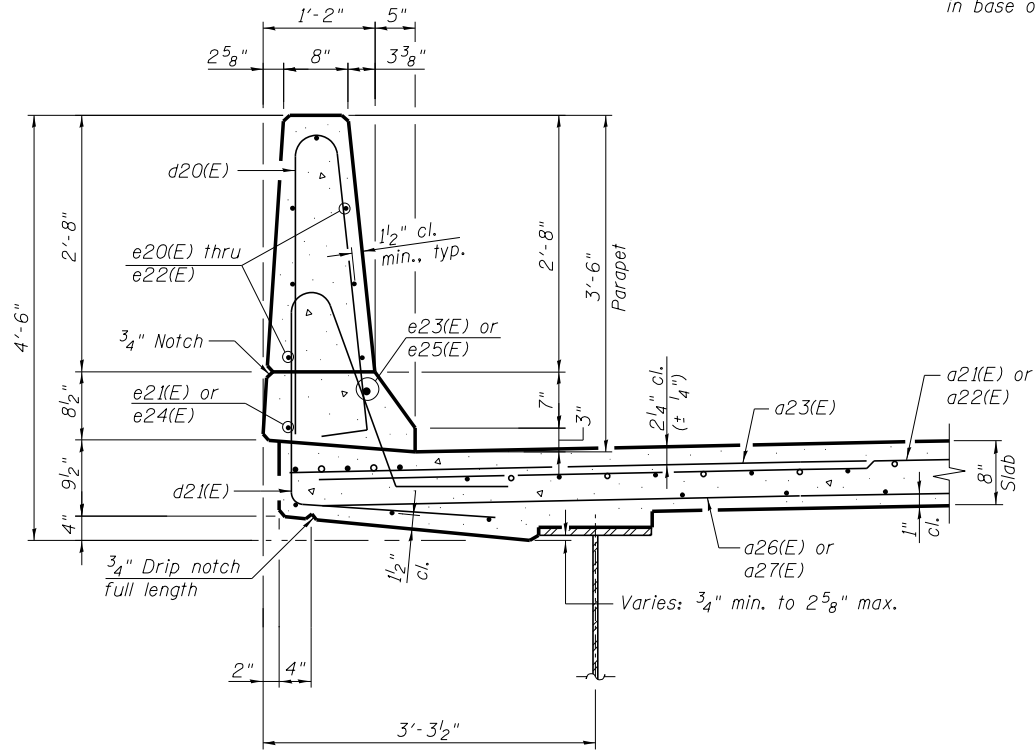


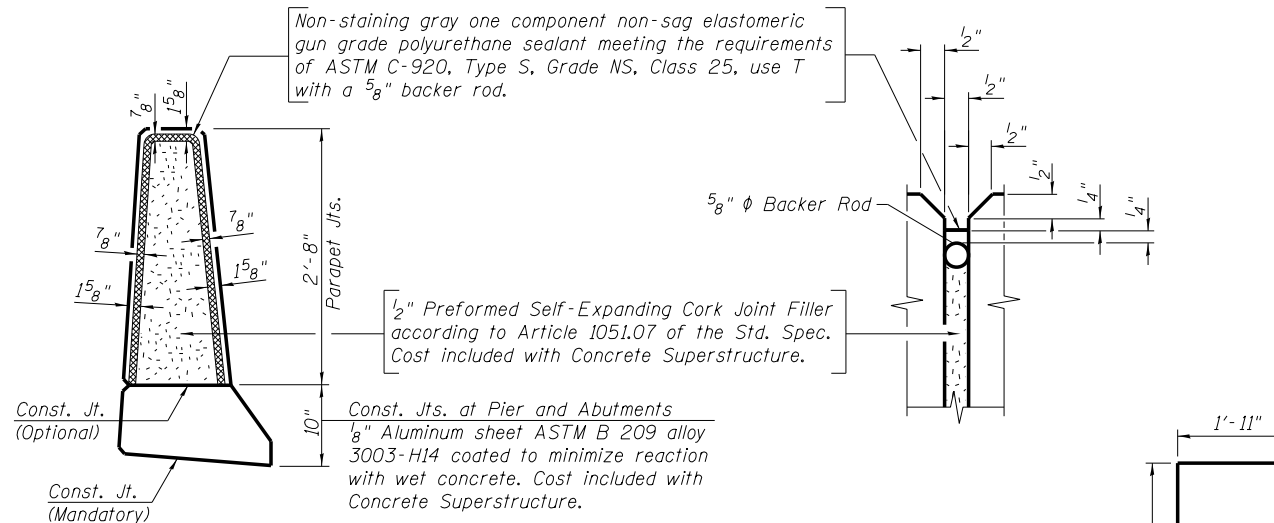
INSIDE ELEVATION OF PARAPET
(2 Thus)

**SUPERSTRUCTURE
BILL OF MATERIAL**

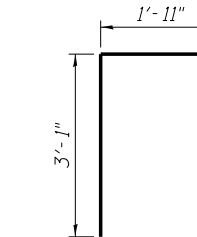
Bar	No.	Size	Length	Shape
a20(E)	1193	#5	31'-0"	—
a21(E)	751	#5	43'-4"	—
a22(E)	751	#5	42'-11"	—
a23(E)	1486	#6	6'-6"	—
a24(E)	8	#6	20'-3"	—
a25(E)	16	#6	27'-3"	—
a26(E)	442	#5	43'-1"	—
a27(E)	442	#5	42'-8"	—
b20(E)	1250	#5	34'-9"	—
b21(E)	366	#6	34'-9"	—
b22(E)	1067	#5	31'-6"	—
d20(E)	684	#5	6'-10"	┌
d21(E)	684	#5	7'-10"	┌
d22(E)	342	#5	9'-3"	┌
d23(E)	684	#5	3'-5"	┌
e20(E)	98	#4	17'-3"	—
e21(E)	32	#4	19'-8"	—
e22(E)	112	#4	18'-3"	—
e23(E)	26	#8	28'-6"	—
e24(E)	26	#4	26'-0"	—
e25(E)	4	#8	19'-8"	—
m20(E)	10	#6	35'-11"	—
m21(E)	40	#6	27'-0"	—
m22(E)	8	#6	6'-2"	—
m23(E)	88	#6	9'-8"	—
m24(E)	16	#6	3'-6"	—
m25(E)	112	#5	4'-0"	—
m26(E)	8	#6	3'-6"	—
m27(E)	8	#6	3'-1"	—
m28(E)	8	#6	6'-8"	—
s20(E)	246	#5	11'-10"	┌
s21(E)	222	#5	17'-0"	┌
v20(E)	246	#5	5'-0"	┌
Concrete Superstructure		Cu. Yd.	1,339.8	
Reinforcement Bars, Epoxy Coated		Pound	294,260	



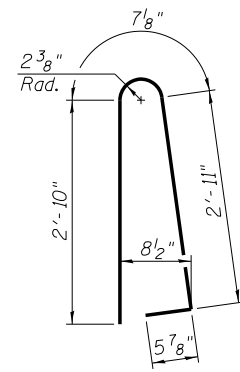
SECTION THRU PARAPET



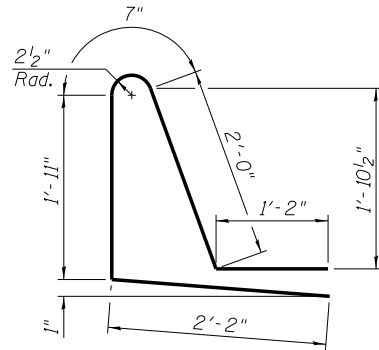
PARAPET JOINT DETAILS



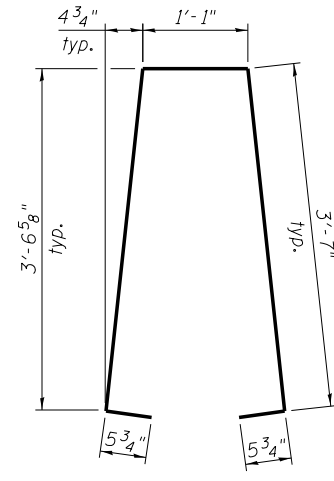
BAR v20(E)



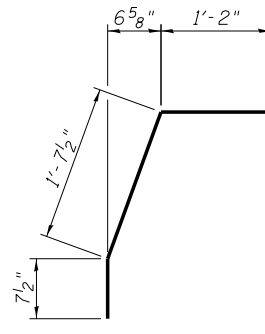
BAR d20(E)



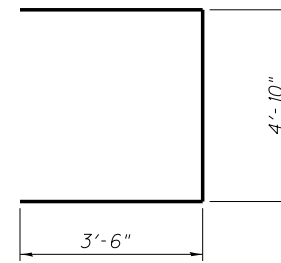
BAR d21(E)



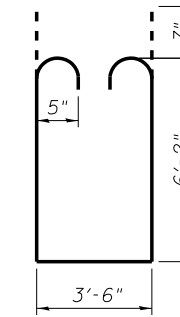
BAR d22(E)



BAR d23(E)



BAR s20(E)



BAR s21(E)

MINIMUM BAR LAP
(Deck)
#5 bar = 3'-3"
#6 bar = 3'-10"

MINIMUM BAR LAP
(Parapet)
#4 bar = 2'-0"
#8 bar = 5'-2"

benesch
engineers · scientists · planners
Alfred Benesch & Company
205 North Michigan Avenue, Suite 2400
Chicago, Illinois 60601
312-565-0450 Job No. 10056

FILE NAME = 0900169.68620.21.dkdt1.dgn	USER NAME = mbecker	DESIGNED - MFB	REVISIONS -
		CHECKED - MRB	REVISIONS -
		DRAWN - PRT	REVISIONS -
		CHECKED - MRB	REVISIONS -
			REVISIONS -

**STATE OF ILLINOIS
DEPARTMENT OF TRANSPORTATION**

**SUPERSTRUCTURE DETAILS 1 OF 2
STRUCTURE NO. 090-0169**

SHEET NO. SC21 OF SC63 SHEETS

F.A.I. RT.E.	SECTION	COUNTY	TOTAL SHEETS	SHEET NO.
74	90-[14R;14HB-4,14,14HV;]BR	TAZEWELL	2433	1997
			CONTRACT NO. 68620	
ILLINOIS FED. AID PROJECT				

x:\10000s\10056\engineer\ing-documents\phase-1\174over\Jackson\Final\0900169-68620-21.dkdt1.dgn 11:19:25 AM 7/16/2012