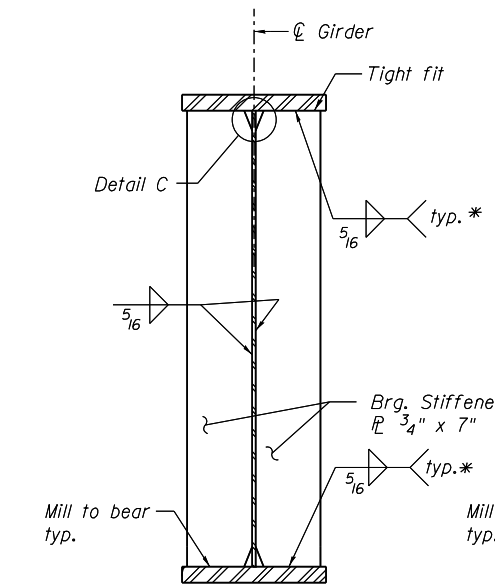
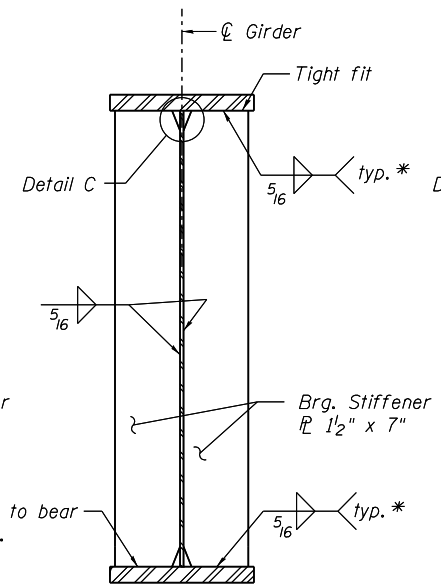


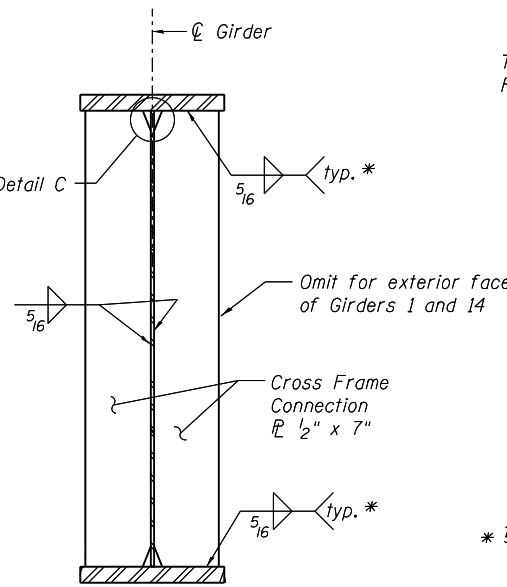
\* Terminate weld 1/4" from outside edges of fls



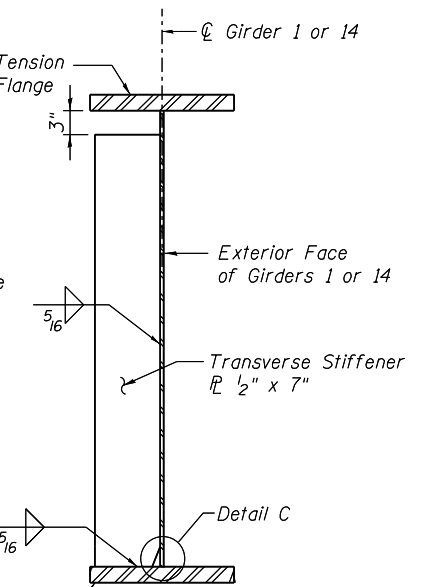
**BEARING STIFFENER AT ABUTMENT**  
(No. plates required = 56)



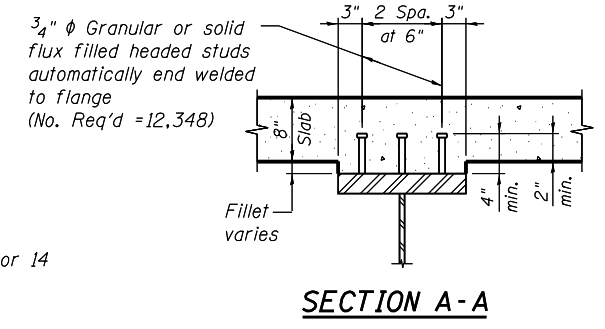
**BEARING STIFFENER AT PIER**  
(No. plates required = 28)



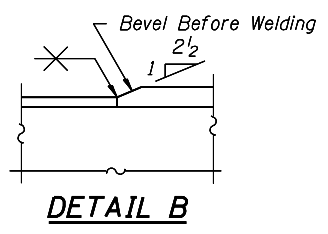
**CONNECTION PLATE**  
(No. plates required = 377)



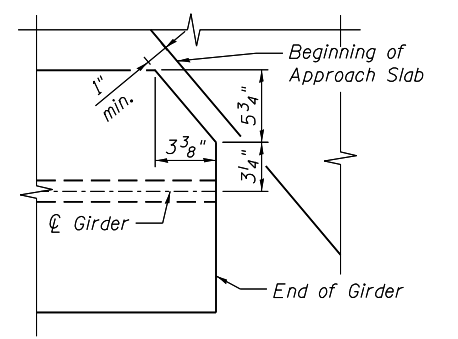
**TRANSVERSE STIFFENER**  
(No. plates required = 2)



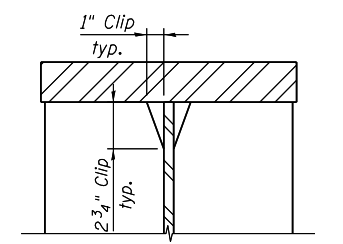
**SECTION A-A**



**DETAIL B**



**END OF GIRDER COPING DETAIL**  
(Top Flange only)



**DETAIL C**  
(Typical top & bottom flanges)

**NOTES:**

- All Girder webs and flanges shall be AASHTO M270 Grade 50 steel.
- "NTR" denotes plates to which notch toughness requirements are applicable.
- Load carrying components designated "NTR" shall conform to the Impact Testing Requirements, Zone 2.

**benesch**  
engineers · scientists · planners  
Alfred Benesch & Company  
205 North Michigan Avenue, Suite 2400  
Chicago, Illinois 60601  
312-565-0450 Job No. 10056

FILE NAME = 0900169.68620.30.std1.dgn  
PLOT SCALE =  
PLOT DATE = 7/16/2012

USER NAME = mbecker	DESIGNED - JLS/DTS	REVISED -
CHECKED - MRB	CHECKED - MRB	REVISED -
DRAWN - PRT	DRAWN - PRT	REVISED -
CHECKED - MRB	CHECKED - MRB	REVISED -

**STATE OF ILLINOIS  
DEPARTMENT OF TRANSPORTATION**

**GIRDER DETAILS 1 OF 4  
STRUCTURE NO. 090-0169**

SHEET NO. SC30 OF SC63 SHEETS

F.A.I. R.T.E.	SECTION	COUNTY	TOTAL SHEETS	SHEET NO.
74	90-[14R(14HB-4,14,14HVB)BR]	TAZEWELL	2433	2006
CONTRACT NO. 68620			ILLINOIS FED. AID PROJECT	

x:\10000s\10056\engineer\ing.-documents\phase-1\174over\Jackson\Final\0900169-68620-30-std1.dgn 11:19:34 AM 7/16/2012