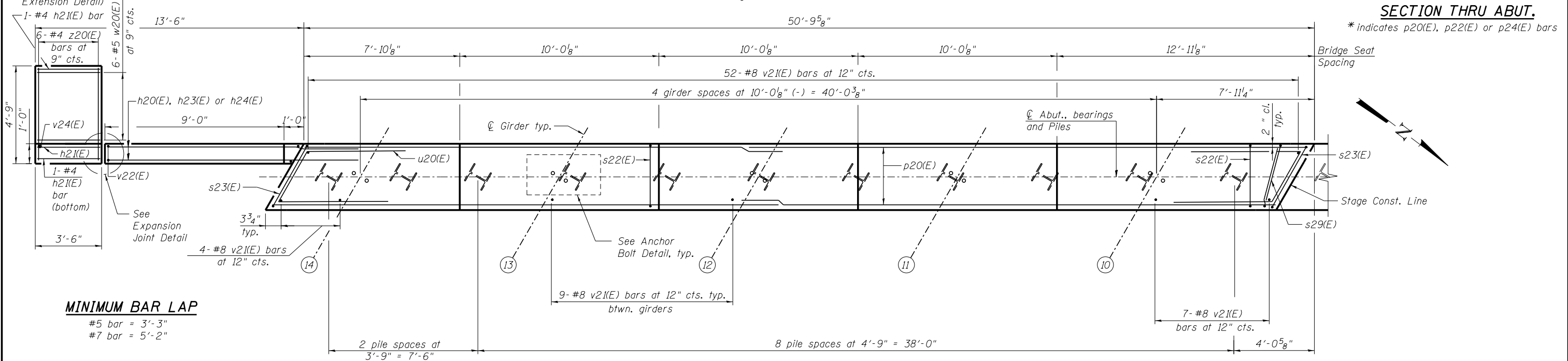


**ELEVATION**  
(Looking West)  
(Stage 2)

**SECTION THRU ABUT.**

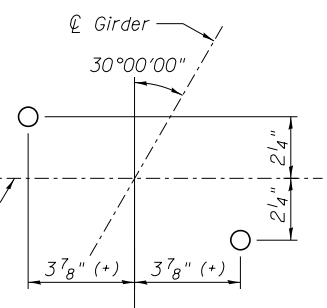
\* indicates p20(E), p22(E) or p24(E) bars



**PLAN**  
(Stage 2)

**MINIMUM BAR LAP**

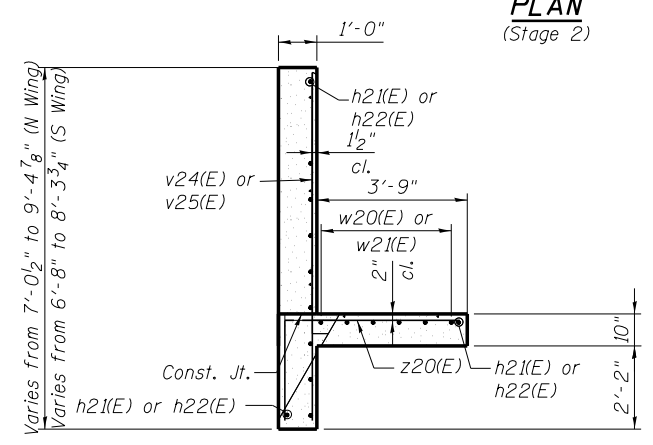
#5 bar = 3'-3"  
#7 bar = 5'-2"



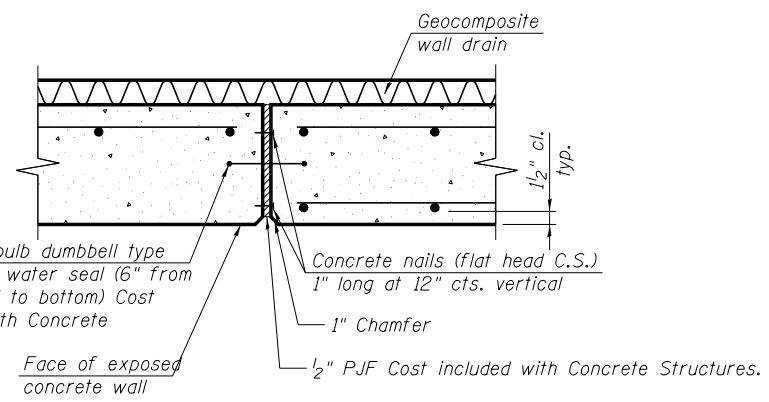
**ANCHOR BOLT DETAIL**

**PILE DATA**

Type: HP12x53  
Nominal Required Bearing: 288 kips  
Factored Resistance Available: 158 kips  
Est. Length: 75 ft.  
No. Production Piles: 29  
No. Test Piles: 1



**WINGWALL EXTENSION DETAIL**



**EXPANSION JOINT DETAIL**

**NOTES:**

- For details of Bar Splicers, see sheet SC44.
- For details of piles and Concrete Encasement, see sheet SC43.
- Pour steps monolithically with cap.
- For Bill of Material and Bar List, see sheet SC36.
- Adjust bar spacing to avoid anchor bolt locations.
- Adjust s29(E) bars in field to form a single closed stirrup between the s22(E) bar and s23(E) bar.

**benesch**  
engineers · scientists · planners

Alfred Benesch & Company  
205 North Michigan Avenue, Suite 2400  
Chicago, Illinois 60601  
312-565-0450 Job No. 10056

FILE NAME =	USER NAME = mbecker	DESIGNED - DTS	REVISED -
0900169.68620.35.abut1.dgn		CHECKED - SLD/JLS	REVISED -
		PLOT SCALE =	REVISED -
		DRAWN - PRT/DTS	REVISED -
		CHECKED - SLD	REVISED -
		PLOT DATE = 7/18/2012	

**STATE OF ILLINOIS**  
**DEPARTMENT OF TRANSPORTATION**

**WEST ABUTMENT DETAILS 1 OF 3**  
**STRUCTURE NO. 090-0169**  
SHEET NO. SC35 OF SC63 SHEETS

F.A.I. R.T.E.	SECTION	COUNTY	TOTAL SHEETS	SHEET NO.
74	90-[14R;14HB-4,14,14HV;B]BR	TAZEWELL	2433	2011
CONTRACT NO. 68620			ILLINOIS FED. AID PROJECT	

x:\10000s\10056\engineer\ing-documents\phase-1\174over\Jackson\Final\0900169.68620.35.abut1.dgn 8/10/08 AM 7/18/2012