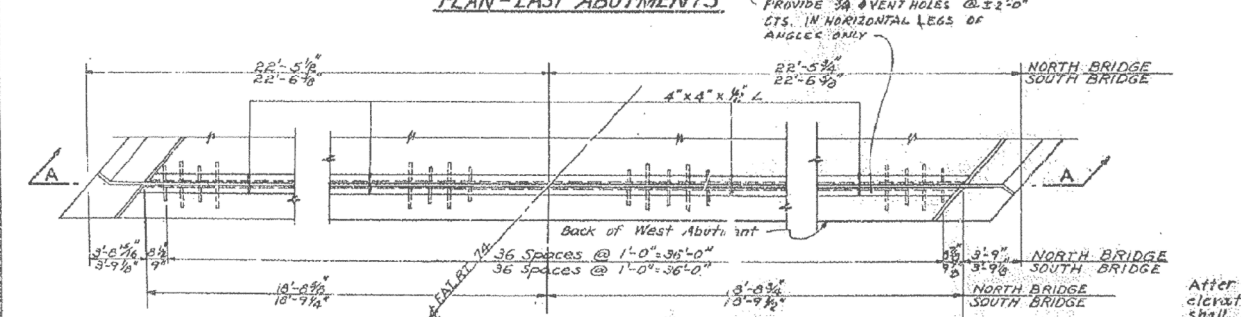
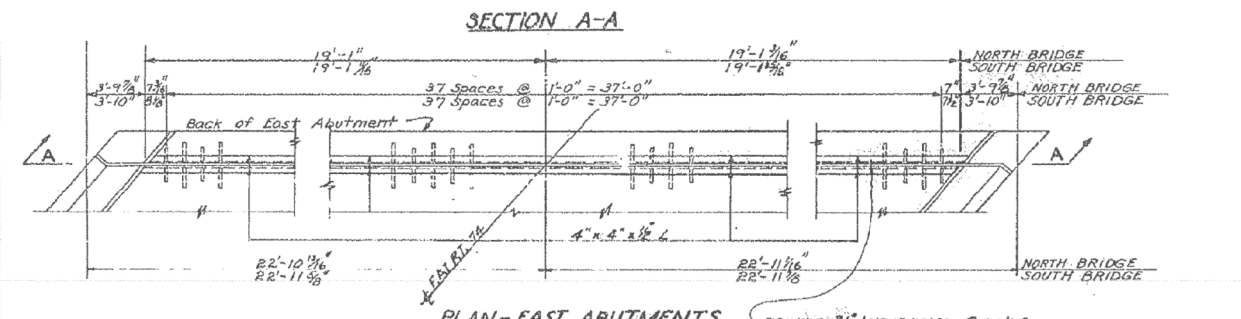
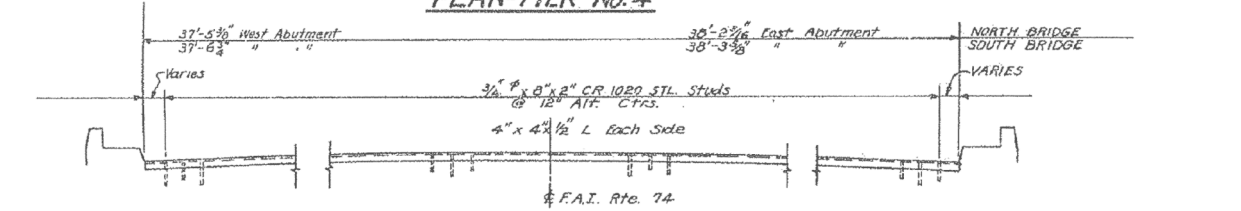
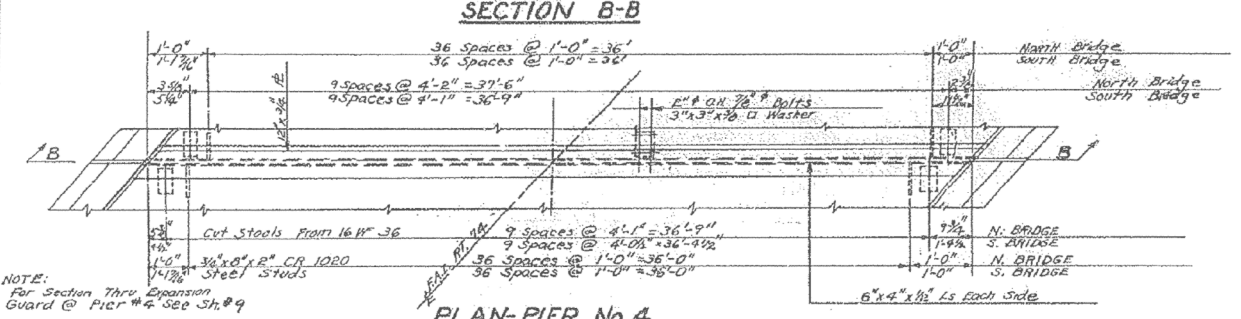
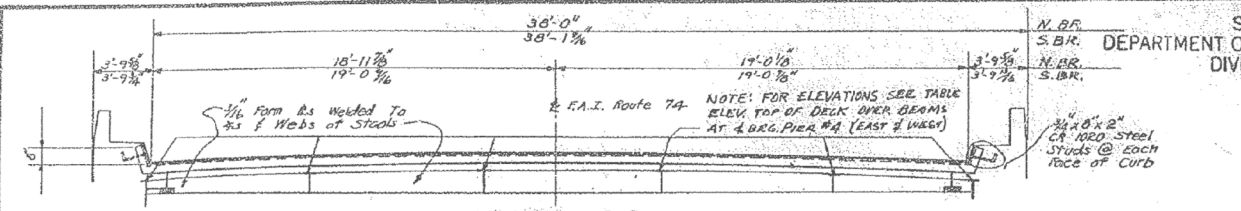


STATE OF ILLINOIS
DEPARTMENT OF PUBLIC WORKS & BUILDINGS
DIVISION OF HIGHWAYS

ROUTE No.	SEC.	COUNTY	TOTAL SHEETS	SHEET NO.
F.A. RT. 74	90-14	TAZEWELL	2433	2037
FED. ROAD DIST. No. 1	ILLINOIS	PROJECT		

SH. 12 OF 15



EXPANSION GUARD
REFER TO CROSS SECTION AT
ABUTMENT ON SHEET NO. OF

DESIGNED HJK
CHECKED PHM.
DRAWN R.C.
CHECKED PHM

EXAMINED
PASSED
APPROVED

ELEVATIONS TOP OF DECK OVER BEAMS (DEAD LOAD DEFLECTION NOT INCLUDED)

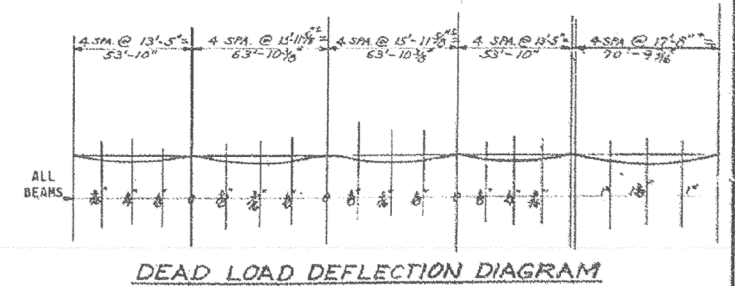
BEAM NO.	SPAN NO. 1					SPAN NO. 2					SPAN NO. 3							
	C.L.BRG. W. ABUT.	1/5	2/5	3/5	4/5	C.L.BRG. PIER #1	1/6	1/3	1/2	2/3	5/6	C.L.BRG. PIER #2	1/6	1/3	1/2	2/3	5/6	C.L.BRG. PIER #3
1	748.28	748.23	748.19	748.15	748.10	748.06	748.02	747.98	747.93	747.89	747.85	747.81	747.76	747.72	747.68	747.64	747.59	747.55
2	748.37	748.33	748.28	748.24	748.20	748.16	748.12	748.08	748.03	747.99	747.95	747.91	747.86	747.82	747.78	747.74	747.69	747.65
3	748.42	748.38	748.33	748.29	748.25	748.20	748.16	748.12	748.08	748.03	747.99	747.95	747.91	747.86	747.82	747.78	747.74	747.69
4	748.49	748.36	748.31	748.27	748.23	748.18	748.14	748.10	748.05	748.01	747.97	747.93	747.88	747.84	747.80	747.76	747.71	747.67
5	748.51	748.27	748.22	748.18	748.14	748.09	748.05	748.01	747.96	747.92	747.88	747.83	747.79	747.75	747.71	747.67	747.62	747.58
6	748.18	747.14	748.10	748.05	748.01	747.97	747.93	747.88	747.84	747.80	747.75	747.71	747.67	747.63	747.58	747.54	747.50	747.45
7	748.08	748.04	748.00	747.95	747.91	747.87	747.82	747.78	747.74	747.70	747.65	747.61	747.57	747.53	747.48	747.44	747.40	747.35
8	748.18	748.14	748.09	748.05	748.01	747.97	747.92	747.88	747.84	747.80	747.75	747.71	747.67	747.62	747.58	747.52	747.49	747.44
9	748.22	748.18	748.14	748.10	748.05	748.01	747.97	747.93	747.88	747.84	747.80	747.75	747.71	747.67	747.63	747.58	747.53	747.48
10	748.20	748.16	748.12	748.07	748.03	747.99	747.94	747.90	747.85	747.80	747.75	747.71	747.67	747.63	747.58	747.53	747.48	747.43
11	748.11	748.07	748.03	747.98	747.94	747.90	747.85	747.81	747.77	747.73	747.68	747.64	747.60	747.56	747.52	747.47	747.42	747.37
12	747.99	747.94	747.90	747.86	747.82	747.77	747.73	747.69	747.64	747.60	747.56	747.52	747.47	747.43	747.38	747.34	747.28	747.23

ELEVATIONS TOP OF DECK OVER BEAMS

BEAM NO.	SPAN NO. 4				SPAN NO. 5								
	1/5	2/5	3/5	4/5	C.L.BRG. PIER #4 (WEST)	C.L.BRG. PIER #4 (EAST)	1/7	2/7	3/7	4/7	5/7	6/7	E. ABUT.
1	747.51	747.47	747.42	747.37	747.33	747.32	747.27	747.22	747.16	747.10	747.04	746.98	746.92
2	747.61	747.56	747.52	747.47	747.41	747.40	747.35	747.30	747.25	747.19	747.13	747.07	747.00
3	747.65	747.51	747.52	747.51	747.46	747.45	747.40	747.34	747.29	747.23	747.17	747.10	747.03
4	747.63	747.58	747.54	747.49	747.43	747.42	747.37	747.31	747.25	747.19	747.13	747.07	747.00
5	747.54	747.50	747.45	747.40	747.34	747.33	747.28	747.22	747.16	747.10	747.03	746.97	746.90
6	747.41	747.36	747.31	747.26	747.20	747.19	747.14	747.08	747.02	746.96	746.89	746.82	746.75
7	747.30	747.24	747.19	747.13	747.07	747.05	746.99	746.93	746.86	746.79	746.72	746.65	746.57
8	747.38	747.33	747.27	747.20	747.14	747.13	747.07	747.00	746.93	746.86	746.79	746.72	746.64
9	747.43	747.37	747.31	747.25	747.18	747.17	747.11	747.04	746.97	746.90	746.83	746.75	746.67
10	747.41	747.35	747.29	747.23	747.16	747.15	747.08	747.01	746.94	746.87	746.80	746.72	746.64
11	747.32	747.26	747.20	747.14	747.07	747.05	746.99	746.92	746.85	746.77	746.70	746.62	746.54
12	747.17	747.11	747.05	746.99	746.92	746.90	746.83	746.76	746.69	746.62	746.54	746.46	746.38

ELEVATIONS TOP OF BEAMS

BEAM NO.	W. ABUT.	PIER #1	PIER #2	PIER #3	PIER #4 (WEST)	PIER #4 (EAST)	E. ABUT.
1	747.69	747.48	747.22	746.97	746.74	746.73	746.34
2	747.78	747.56	747.32	747.07	746.83	746.82	746.42
3	747.85	747.62	747.37	747.11	746.87	746.86	746.45
4	747.82	747.60	747.34	747.09	746.85	746.84	746.42
5	747.73	747.51	747.25	747.00	746.76	746.75	746.31
6	747.60	747.38	747.13	746.87	746.62	746.61	746.17
7	747.50	747.28	747.03	746.77	746.48	746.47	745.99
8	747.60	747.38	747.13	746.86	746.56	746.55	746.06
9	747.64	747.43	747.17	746.90	746.60	746.59	746.09
10	747.62	747.40	747.15	746.88	746.58	746.56	746.06
11	747.53	747.31	747.06	746.79	746.49	746.47	745.96
12	747.40	747.19	746.93	746.65	746.34	746.32	745.79



METHOD OF DETERMINING
FILLET HEIGHT 'f'

After all structural steel has been erected, elevations of the top flanges of the beams shall be taken at intervals not to exceed 10'-0". From these elevations subtract the increment of deflections for these points, determined from the D.L. Deflection diagram. The elevations so obtained subtracted from the theoretical grade elevations, minus floor thickness equals the fillet height above top of beam.

MISCELLANEOUS DETAILS
F.A. ROUTE 74 SECTION 90-14 HYB
F.A. ROUTE 74 OVER I.T.R.R. & S.B.I. ROUTE 121
STATION 568+85.40
TAZEWELL COUNTY
WARREN AND VAN PRAAG, INC.
CONSULTING ENGINEERS - DECATUR, ILLINOIS

FOR INFORMATION ONLY