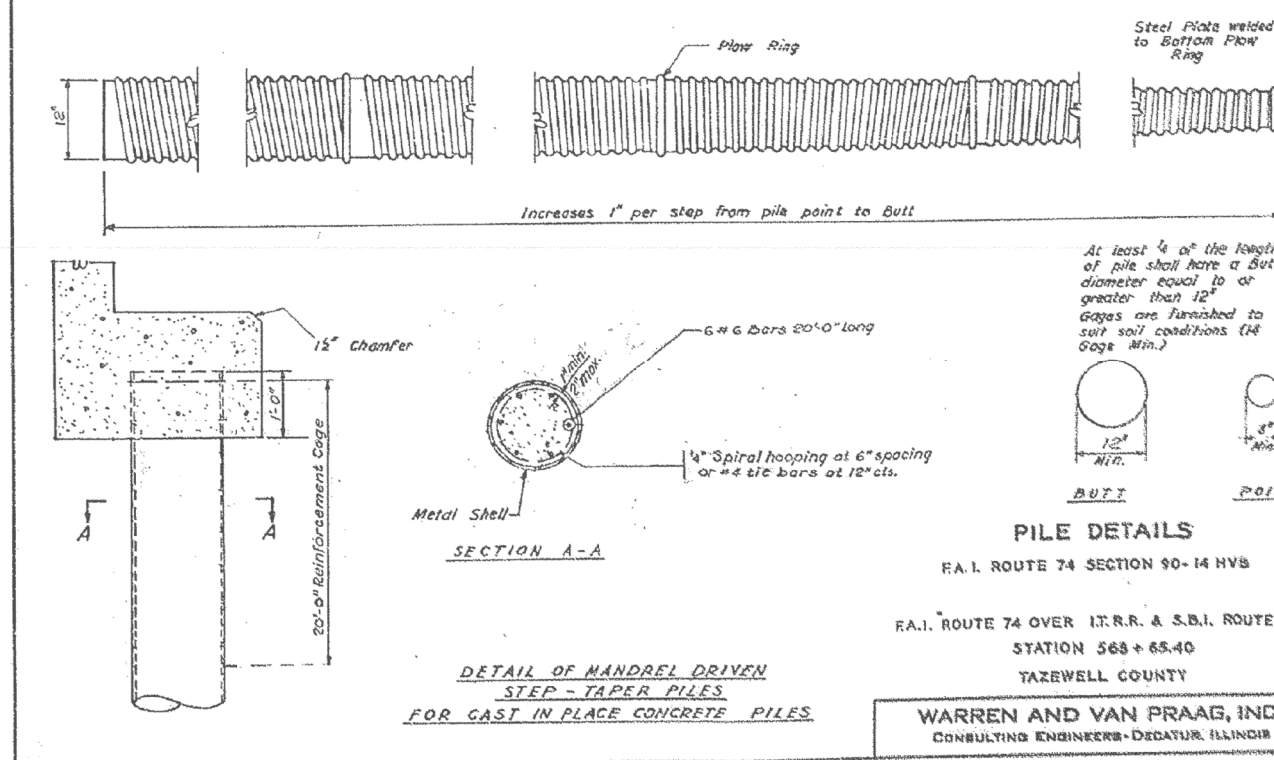
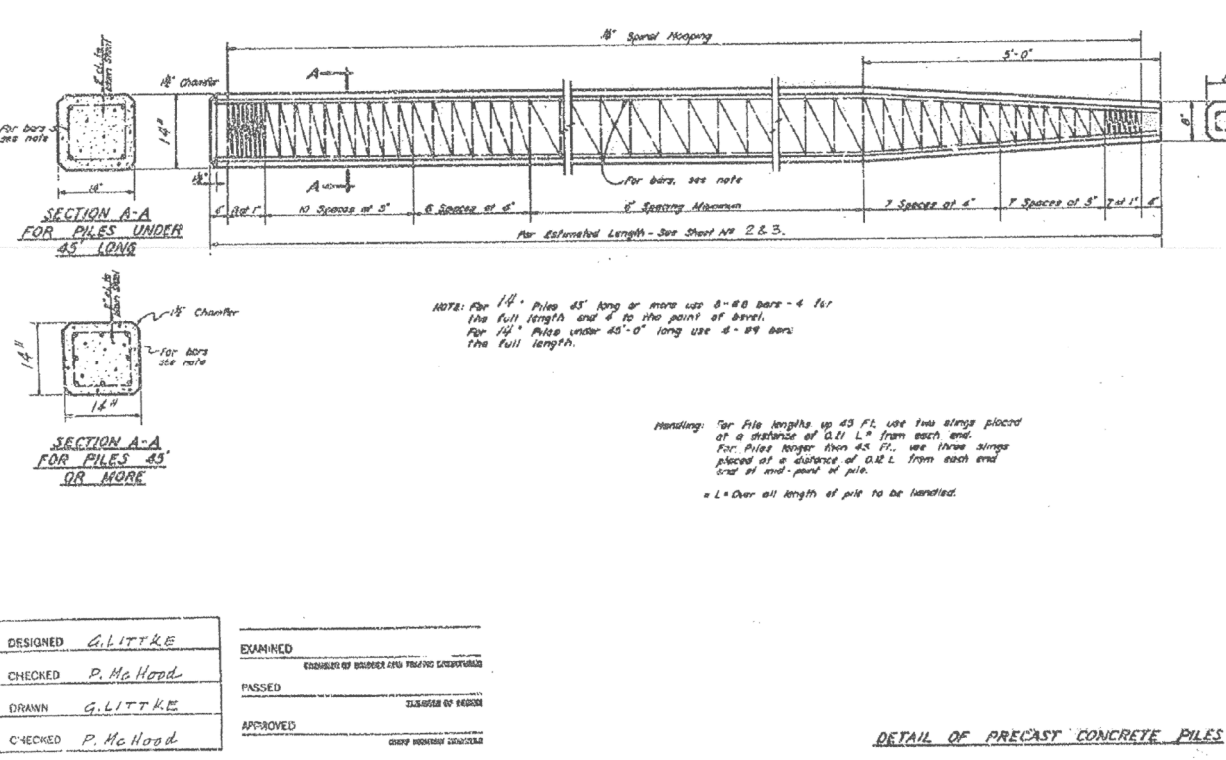
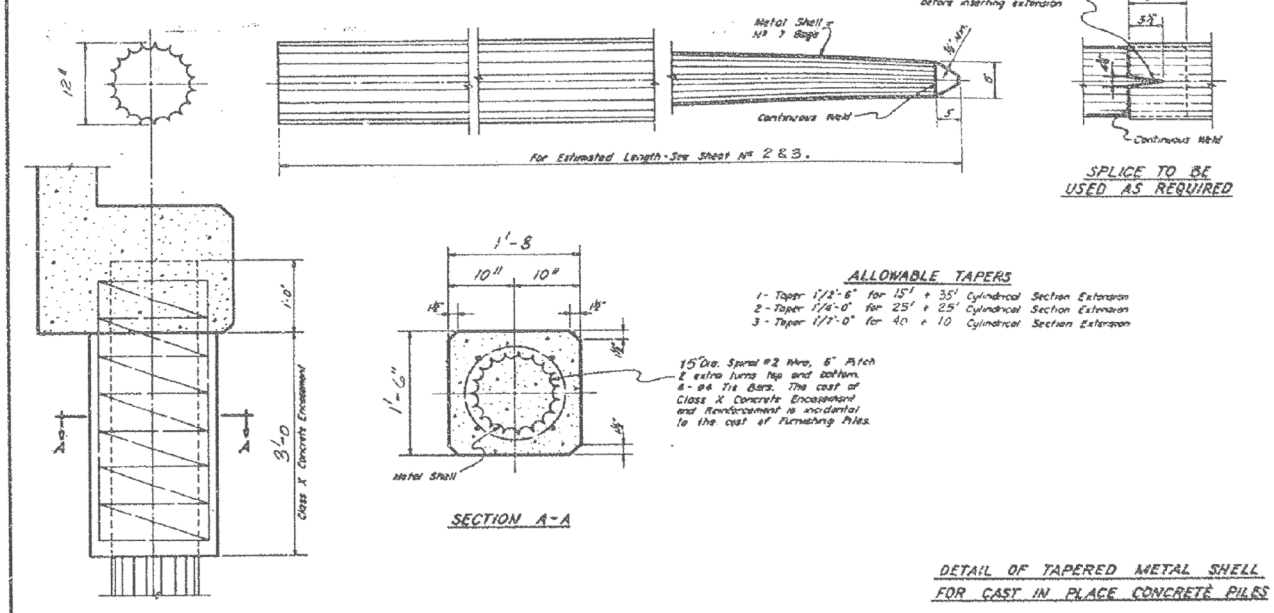
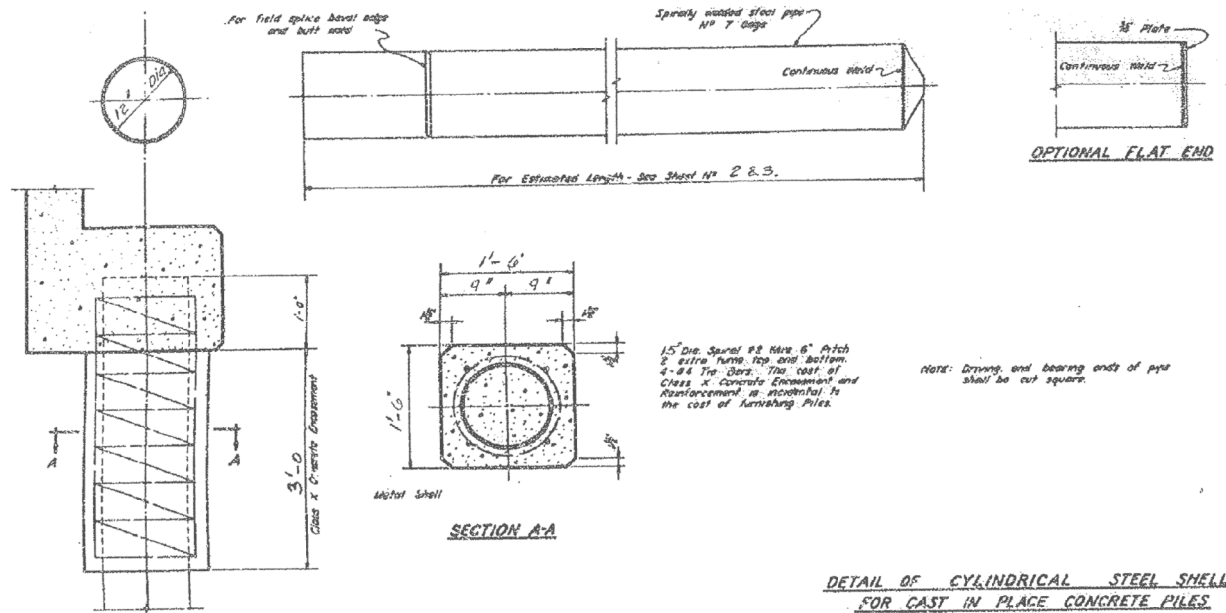


STATE OF ILLINOIS
DEPARTMENT OF PUBLIC WORKS & BUILDINGS
DIVISION OF HIGHWAYS

ROUTE No.	SEC.	COUNTY	STATION	SHEET
F.A.I. 74	90-14	TAZEWELL	24	20
REL. 74	HVB			
FED. ROAD DIST. No. 7	BLVD	PROJECT	SH. NO. 14 OF 15	



DESIGNED	G. LITTKE	EXAMINED	
CHECKED	P. McHood	PASSED	
DRAWN	G. LITTKE	APPROVED	
CHECKED	P. McHood		

FOR INFORMATION ONLY

benesch
engineers · scientists · planners
Alfred Benesch & Company
205 North Michigan Avenue, Suite 2400
Chicago, Illinois 60601
312-565-0450 Job No. 10056

FILE NAME =	USER NAME = mbecker	DESIGNED - MFB	REVISED -
0900169.68620.63.exist14.dgn	PLOT SCALE =	CHECKED - MRB	REVISED -
	PLOT DATE = 7/16/2012	DRAWN - PRT/LLR	REVISED -
		CHECKED - MRB	REVISED -

STATE OF ILLINOIS
DEPARTMENT OF TRANSPORTATION

EXISTING PLANS
STRUCTURE NO. 090-0169
SHEET NO. SC63 OF SC63 SHEETS

F.A.I. RTE.	SECTION	COUNTY	TOTAL SHEETS	SHEET NO.
74	90-14R(14HB-4,14,14HV)BR	TAZEWELL	2433	2039
			CONTRACT NO. 68620	
ILLINOIS FED. AID PROJECT				

x:\10000s\10056\engineer\ing-documents\phase-1\174over\Jackson\Final\0900169.68620.63.exist14.dgn 11:23:41 AM 7/16/2012