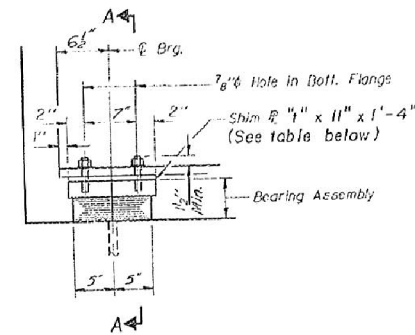
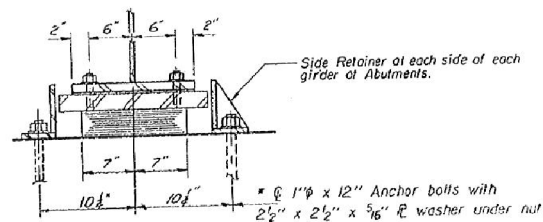


STATE OF ILLINOIS
DEPARTMENT OF TRANSPORTATION

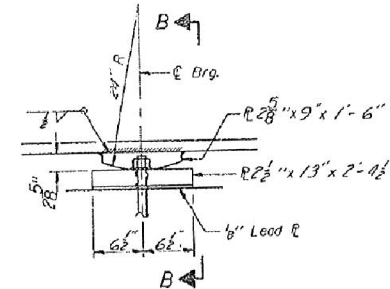
RTE.	SECTION	COUNTY	TOTAL SHEETS	SHEET NO.
FAI 74	*	TAZEWELL	28	45
STA.	TO STA.			
ILLINOIS	ILLINOIS			
* (90-15-1, 15-1HB, 15 W)-1				
SHEET 15 OF 22				



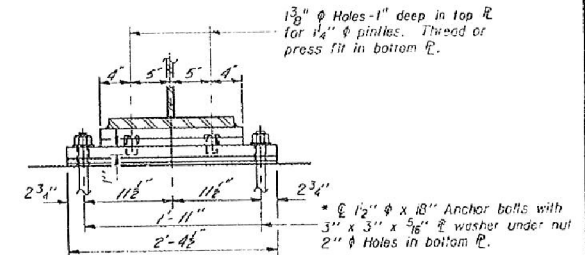
ELEVATION AT ABUT.



SECTION A-A

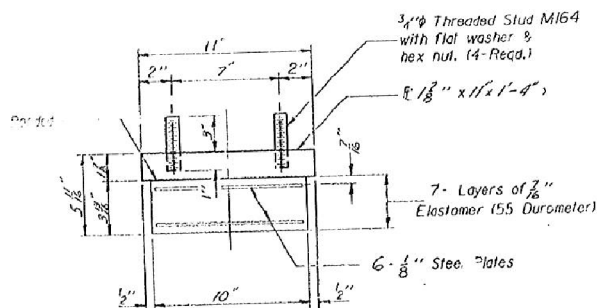


ELEVATION AT PIER



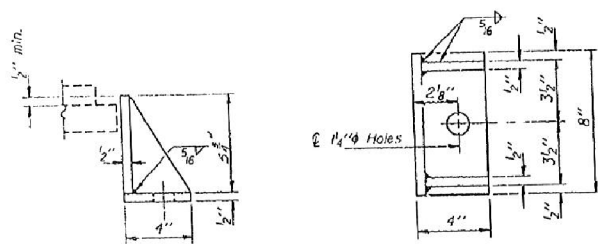
SECTION B-B

TYPE I ELASTOMERIC EXP. BRG.



BEARING ASSEMBLY

Note: Shim plates shall not be placed under Bearing Assembly.



SIDE RETAINER

Equivalent rolled angle with stiffeners will be allowed in lieu of welded plates. (56 Required)

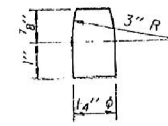
DESIGNED	L.L. VIFLEY
CHECKED	D.L.M.
DRAWN	C.D. SNEEDEN
CHECKED	L.L.V.

I-2-E1 12-1-03

R.A.N. CONSULTANTS INC.

* Notes: Anchor bolts of fixed bearings may be built into the masonry. See sheet #16 for Anchor Bolt installation.

FIXED BEARING
(If Required)



PINTLE

TABLE OF "t" DIMENSIONS

GIRDER NO.	1	2	3	4	5	6	7	8	9	10	11	12	13	14
S. Abut.	-	-	-	-	-	0 1/8"	-	-	-	-	-	-	-	-
Pier	-	-	-	-	-	-	-	-	-	-	-	-	-	-
N. Abut.	-	-	-	-	-	-	-	-	-	-	-	-	-	-

BILL OF MATERIAL

Item	Unit	Total
Elastomeric Bearing Assembly Type 1	Each	28

BEARING DETAILS

FAI 74 E.F.A.U. 6729
SECTION (90-15-1, 15-1HB, 15W)-1
TAZEWELL COUNTY
STATION 36+49.87

FAI 74 (I-74) / FAU 6729 (MORTON AVE.)

FOR INFORMATION ONLY

benesch
engineers · scientists · planners
Alfred Benesch & Company
205 North Michigan Avenue, Suite 2400
Chicago, Illinois 60601
312-565-0450 Job No. 10056

FILE NAME =	USER NAME = mbecker	DESIGNED - JDC	REVISED -
0900141.68620.27.exist13.dgn	PLOT SCALE =	CHECKED - MRB	REVISED -
	PLOT DATE = 7/16/2012	DRAWN - PRT	REVISED -
		CHECKED - MRB	REVISED -

STATE OF ILLINOIS
DEPARTMENT OF TRANSPORTATION

EXISTING PLANS
STRUCTURE NO. 090-0141

SHEET NO. SD27 OF SD29 SHEETS

F.A.I. RTE.	SECTION	COUNTY	TOTAL SHEETS	SHEET NO.
74	90-114R(14HB-4,14,14HB)BRJ	TAZEWELL	2433	2066
CONTRACT NO. 68620				
ILLINOIS FED. AID PROJECT				

X:\100005\10056\Engineer\ing-Documents_Phase 1\MortonOver\74\Final\0900141.68620.27.exist13.dgn 7:38:43 AM 7/16/2012