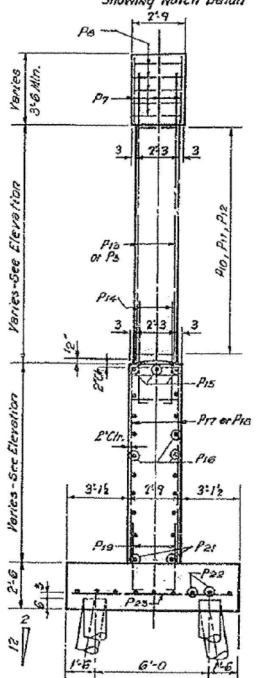
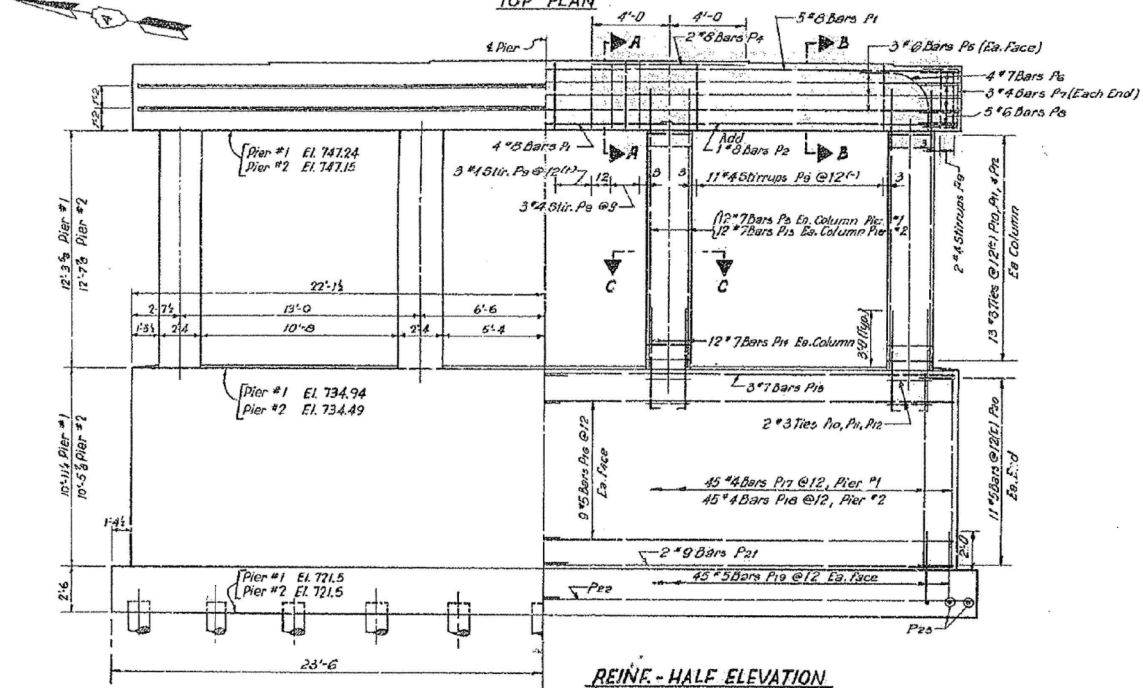
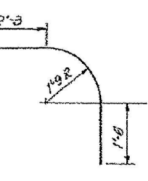
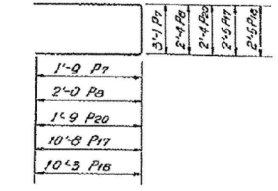
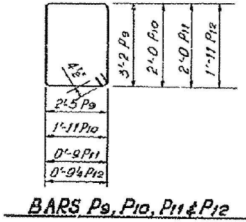
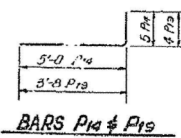
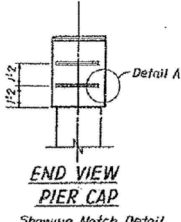
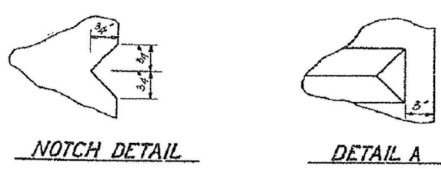
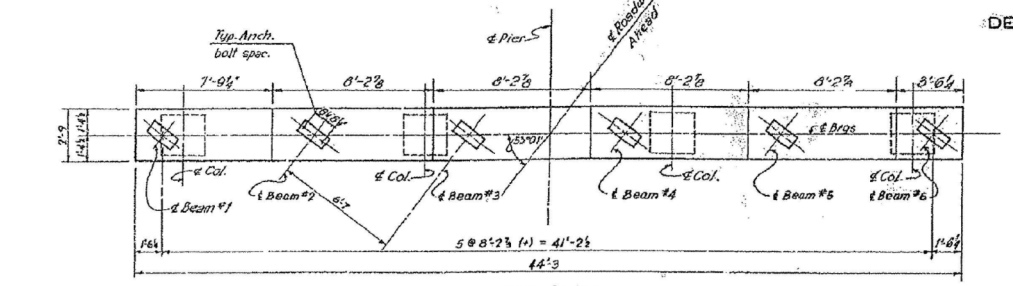


STATE OF ILLINOIS
DEPARTMENT OF PUBLIC WORKS & BUILDINGS
DIVISION OF HIGHWAYS

ROUTE No.	SEC.	COUNTY	TOTAL SHEETS	SHEET NO.
FAI 74	90-014	TAZEWELL	89	43
FED. ROAD DIST. No. 7		ILLINOIS		



BILL OF MATERIAL			
SOUTH STRUCTURE - 2 PIERS			
Bar No.	Size	Length	Shape
P1	18#	7'	3'-6"
P2	18	5	35'-6"
P3	18	5	34'-10"
P4	26#	5	4'-0"
P5	4	9	34'-3"
P6	4	9	33'-8"
P7	6	7	34'-1"
P8	6	7	33'-6"
P9	36	5	33'-9"
P10	36	5	33'-2"
P11	67	4	23'-9"
P12	65	4	22'-11"
P13	44	5	5'-10"
P14	144	7	5'-5"
P15	174	3	3'-7"
P16	174	3	6'-4 1/2"
P17	174	3	6'-3"
P18	72	7	13'-10"
P19	72	7	14'-2"
P20	12	8	32'-8"
P21	12	8	32'-1"
P22	4	8	22'-2"
P23	4	8	21'-8"
P24	12	8	32'-8"
P25	12	8	32'-0"
P26	1	8	14'-9"
P27	1	8	14'-4"
P28	6	8	6'-0"
P29	7	10	13'-8"
P30	7	10	13'-6"
P31	18	7	6'-6"
P32	26	4	11'-11"
P33	26	4	12'-3"
P34	60	4	12'-7"
P35	40	8	16'-4"
P36	12	4	6'-11"
P37	12	4	6'-7"
P38	12	4	6'-7"

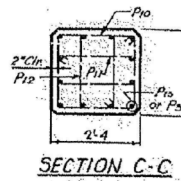
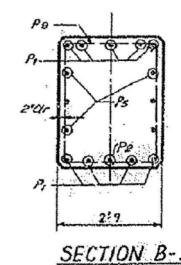
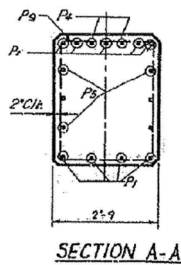
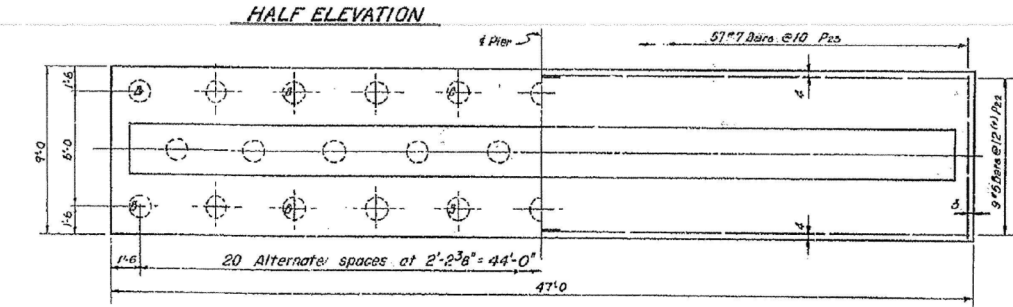
BILL OF MATERIAL			
NORTH STRUCTURE - 2 PIERS			
Bar No.	Size	Length	Shape
P1	18	8	43'-11"
P2	4	8	15'-5"
P3	46	7	14'-3"
P4	8	8	6'-0"
P5	12	6	43'-11"
P6	16	7	6'-6"
P7	12	4	6'-7"
P8	20	8	6'-4"
P9	76	4	11'-11"
P10	120	3	8'-7"
P11	120	3	6'-3"
P12	120	3	6'-1 1/2"
P13	48	7	14'-9"
P14	98	7	5'-5"
P15	12	7	23'-1"
P16	72	5	22'-9"
P17	45	4	23'-9"
P18	45	4	22'-11"
P19	180	5	4'-0"
P20	44	5	5'-10"
P21	8	9	23'-5"
P22	36	5	24'-2"
P23	114	7	6'-6"

BILL OF MATERIAL - ALL PIERS		
Class X Concrete	Cu. Yds.	584.5
Reinforcement Bars	Lbs.	42953
Class J Excavation	Cu. Yds.	126.8
Crescoted Piles	Lins. Ft.	7216
Test Piles (Timber)	Ea.	1

PILE DATA (No. Structure)
Type: Crescoted
Capacity: 20 Tons
Est. Length: 44'-0"
No. Piers: 2
1 Test Pile in Pier 2 (No. Structure)

PIERS - NO. STRUCTURE
F.A.I. ROUTE 74 SECTION 90-14VB

F.A.I. ROUTE 74 OVER PENNA. RAILROAD
STATION 550+24.84
TAZEWELL COUNTY
WARREN AND VAN PRAAS, INC.
CONSULTING ENGINEERS - DECATUR, ILLINOIS



ELEV. OF BRG. SEATS		
BEAM	PIER #1 NORTH STRUCTURE	PIER #2 NORTH STRUCTURE
1	750.78	750.72
2	750.86	750.80
3	750.93	750.85
4	750.92	750.84
5	750.84	750.75
6	750.74	750.65

DESIGNED E.L.	EXAMINED
CHECKED M.B.	ENGINEER OF BRIDGES AND TRAFFIC STRUCTURES
DRAWN S.F.M.	PASSED
CHECKED E.L.	APPROVED
	ENGINEER OF DESIGN
	CHIEF HIGHWAY ENGINEER

DETAILS FOR NORTH STRUCTURE
PIER #1 & #2
Piers are symmetrical except as noted.

FILE NAME =	USER NAME = mbecker	DESIGNED - MFB	REVISED -
xxxxxx.68620.15.ex1st4.dgn	PLOT SCALE =	CHECKED - MRB	REVISED -
	PLOT DATE = 7/16/2012	DRAWN - MFB	REVISED -
		CHECKED - MRB	REVISED -

F.A.I. RT.:	SECTION	COUNTY	TOTAL SHEETS	SHEET NO.
74	90-114R(14HB-4,14,14HBV)BRJ	TAZEWELL	2433	2083
			CONTRACT NO. 68620	
ILLINOIS FED. AID PROJECT				