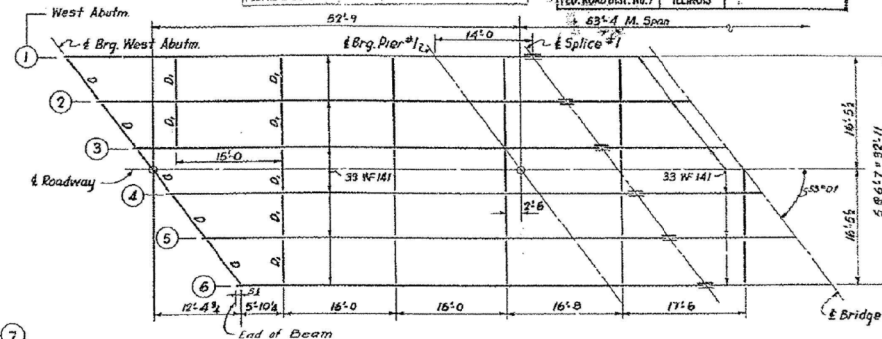
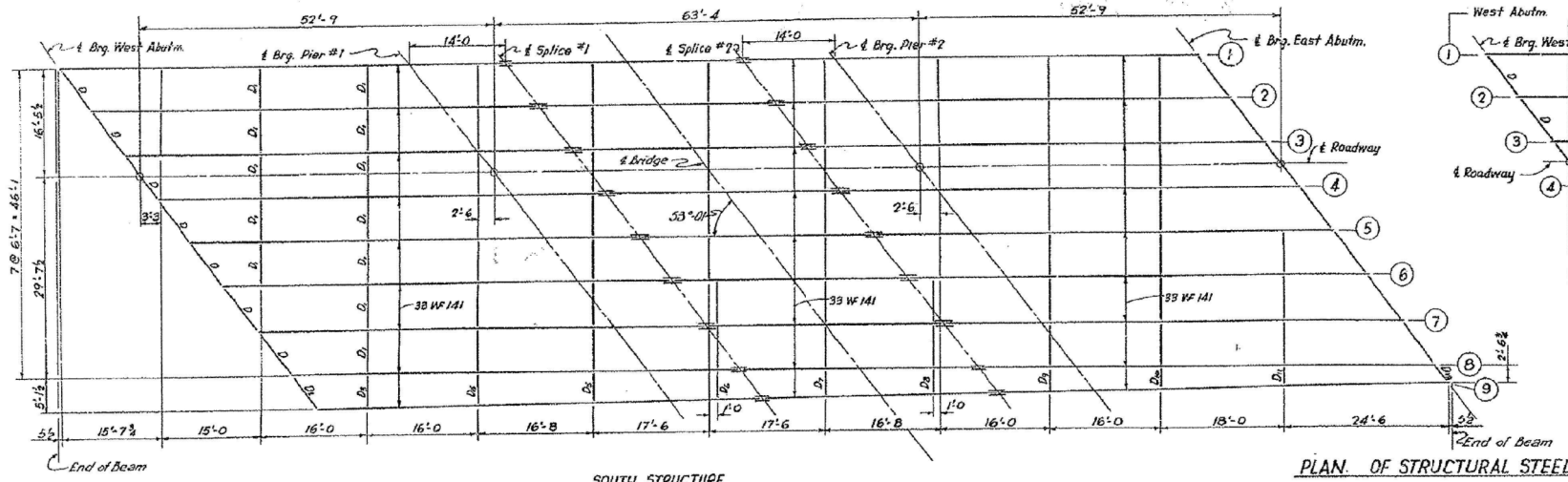
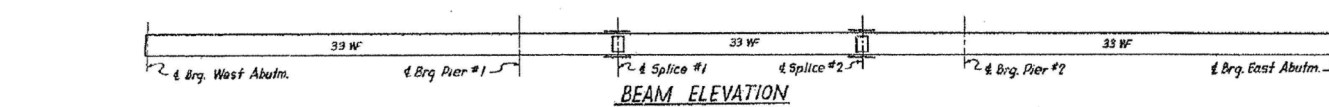


STATE OF ILLINOIS
DEPARTMENT OF PUBLIC WORKS & BUILDINGS
DIVISION OF HIGHWAYS

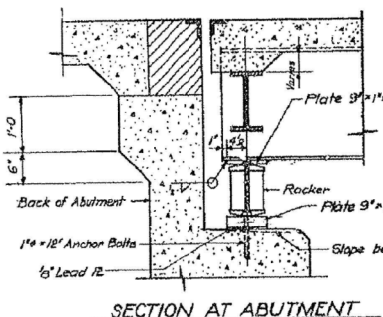
ROUTE No.	SEC.	COUNTY	TOTAL SHEETS	SHEET
74	90-144B	TAZEWELL	89	45



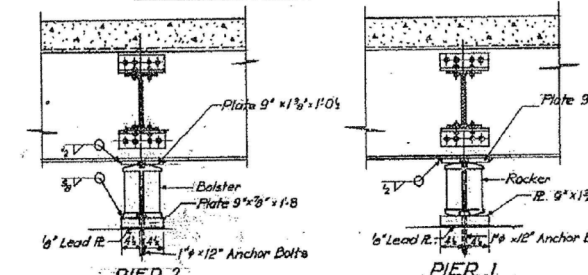
NORTH STRUCTURE - HALF PLAN
SYMMETRICAL ABOUT & OF BRIDGE



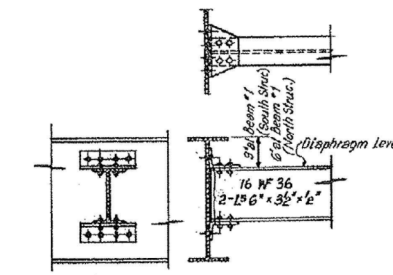
ELEVATIONS - TOPS OF BEAMS									
North Structure					South Structure				
Beam	West Abut.	Splice #1	Splice #2	East Abut.	West Abut.	Splice #1	Splice #2	East Abut.	Beam
1	754.86	754.73	754.66	754.52	754.81	754.63	754.53	754.54	1
2	754.94	754.81	754.74	754.59	754.89	754.70	754.60	754.40	2
3	755.01	754.87	754.79	754.64	754.96	754.76	754.68	754.45	3
4	755.01	754.86	754.78	754.63	754.95	754.75	754.64	754.45	4
5	754.93	754.78	754.70	754.54	754.87	754.68	754.55	754.33	5
6	754.84	754.68	754.60	754.45	754.75	754.54	754.42	754.20	6
7					754.63	754.61	754.30	754.07	7
8					754.51	754.29	754.17	753.68	8
9					754.44	754.24	754.12	753.91	9



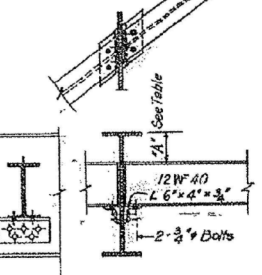
SECTION AT ABUTMENT



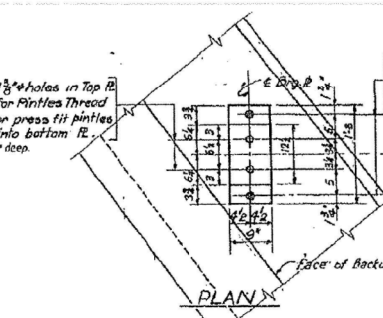
PIER 1
PIER 2



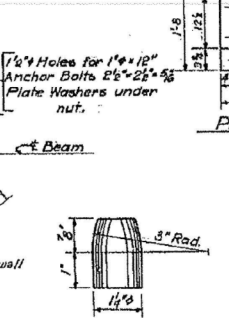
DIAPHRAGM D1, D2, D3, D4, D5, D6, D7, D8, D9, D10, D11



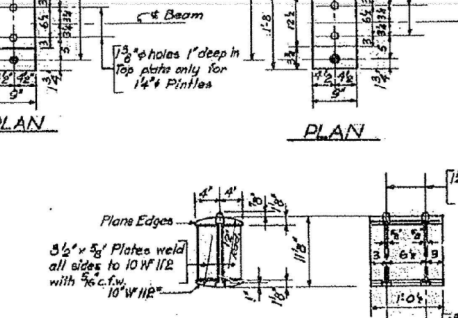
DIAPHRAGM D D1, D D2, D D3, D D4, D D5, D D6, D D7, D D8, D D9, D D10, D D11



PLAN X

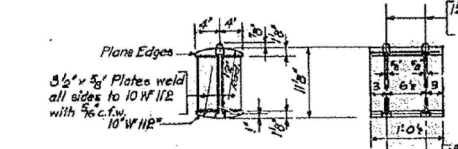


DETAIL OF PINTLE

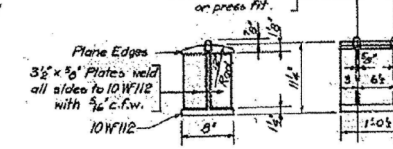


PLAN

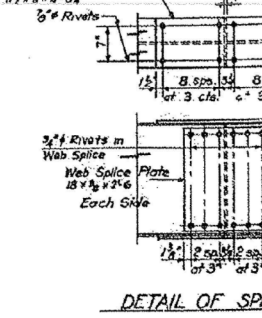
PLAN



DETAIL OF BEARING AT ABUTMENTS & PIER 1



DETAIL OF BEARING AT PIER 2



DETAIL OF SPLICE

"A" DIMENSIONS				
Beam	North Structure		South Structure	
	West Abut.	East Abut.	West Abut.	East Abut.
1	3 1/2	4 1/2	7 1/2	7 1/2
2	4 1/2	4 5/8	7 1/2	8 1/2
3	5	5 1/8	8 1/2	9
4	5	5 5/8	8 3/4	8 3/4
5	4 1/2	4 1/2	7 1/2	7 1/2
6	3	3	6 3/4	6 3/4
7			4 3/4	4 3/4
8			3 3/4	3 3/4
9			2 1/2	2 1/2

STRUCTURAL STEEL DETAILS
F.A.I. ROUTE 74 - SECTION 90-144B

F.A.I. ROUTE 74 OVER PENNA RAILROAD
STATION 550-2484
TAZEWELL COUNTY

WARREN AND VAN PRAAG, INC.
CONSULTING ENGINEERS - DECATUR, ILLINOIS

FILE NAME =	USER NAME =	DESIGNED -	REVISOR -
xxxxxx.68620.17.ex1st6.dgn	mbecker	MFB	
		CHECKED -	REVISOR -
		MRB	
		DRAWN -	REVISOR -
		MFB	
		CHECKED -	REVISOR -
		MRB	

F.A.I. RTE.	SECTION	COUNTY	TOTAL SHEETS	SHEET NO.
74	90-144R(144B-4,14,144VB)BRJ	TAZEWELL	2433	2085
			CONTRACT NO. 68620	
ILLINOIS FED. AID PROJECT				

FOR INFORMATION ONLY

X:\100005\10056\Engineer\ing-Document\Phase I\174overRR\Final\xxxxxx.68620.17.ex1st6.dgn 7:45:53 AM 7/16/2012