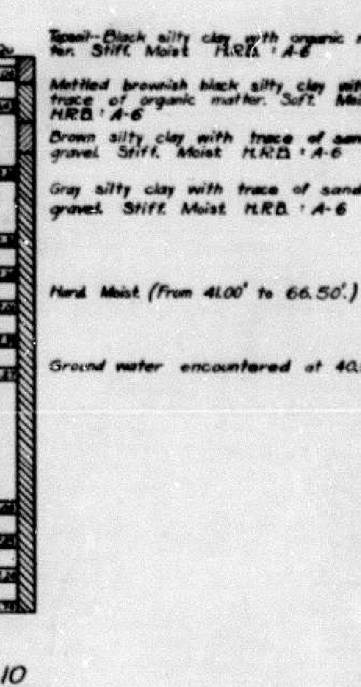
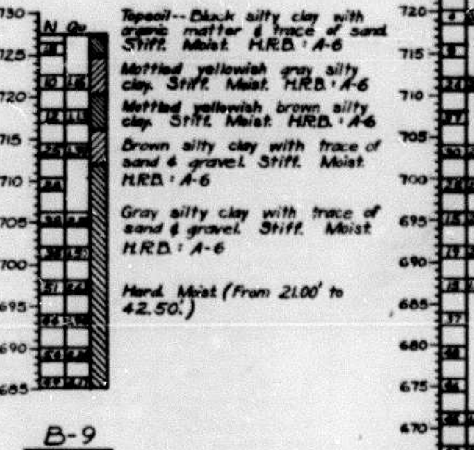
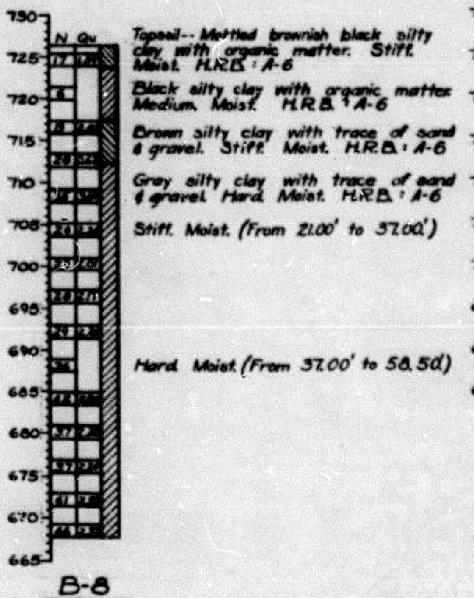
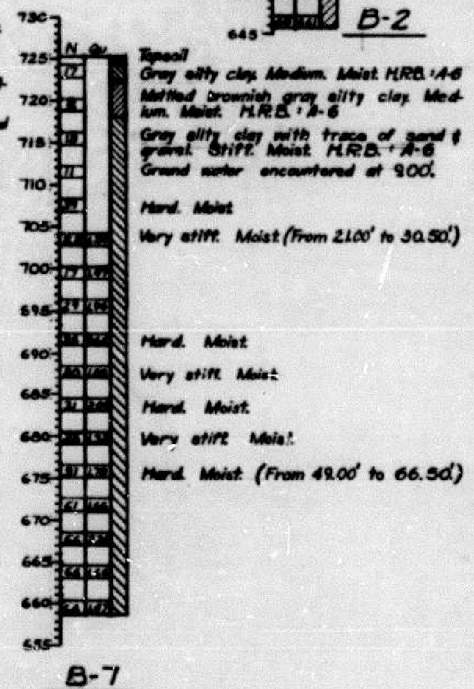
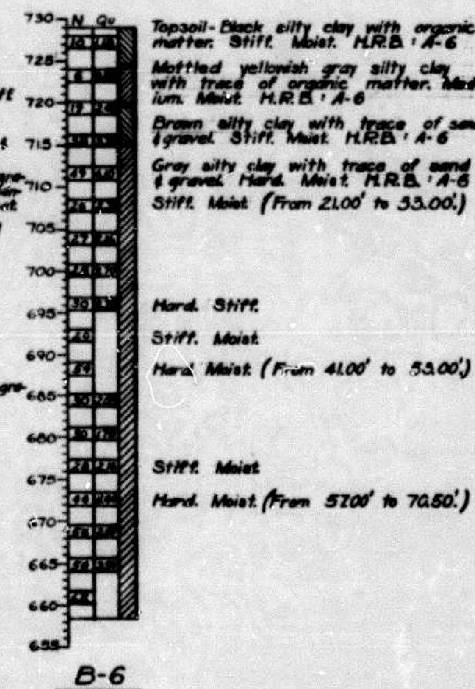
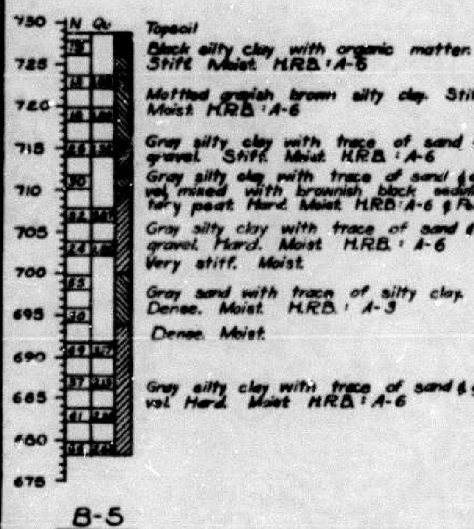
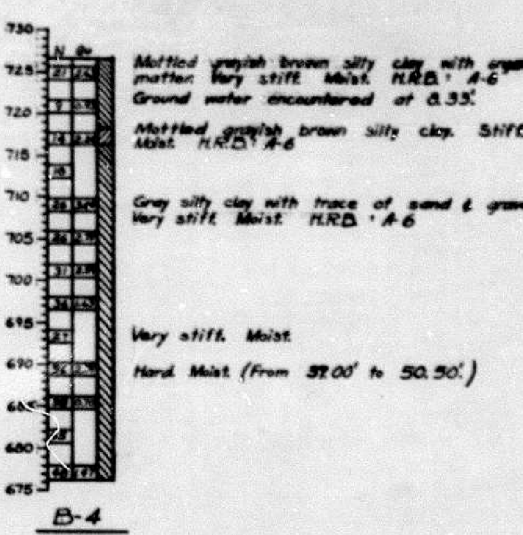
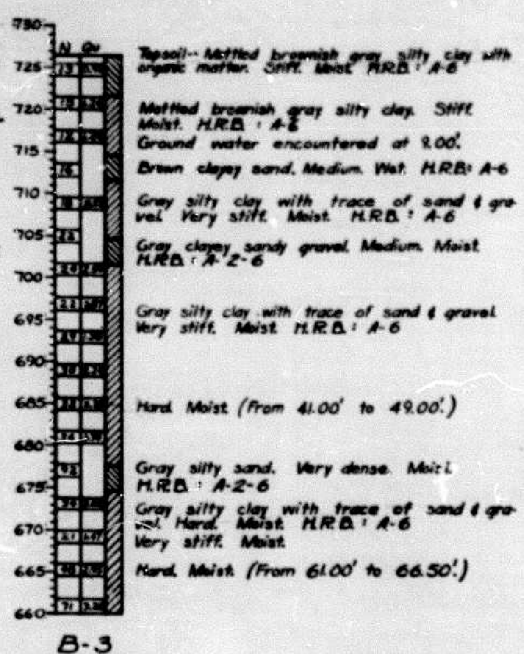
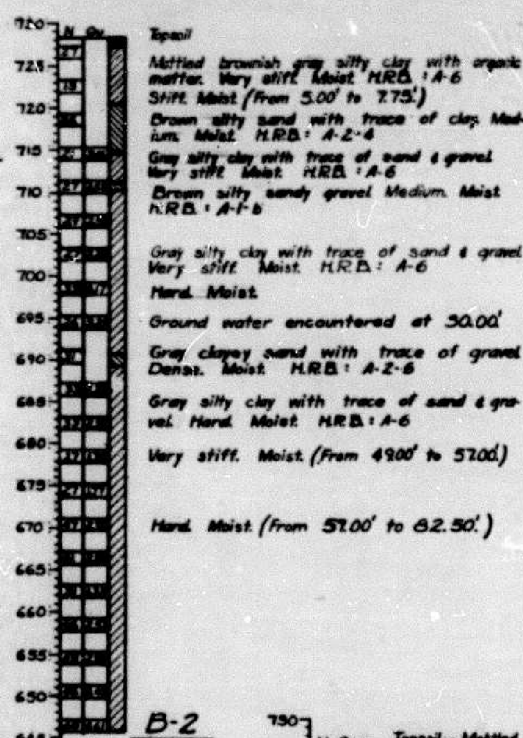
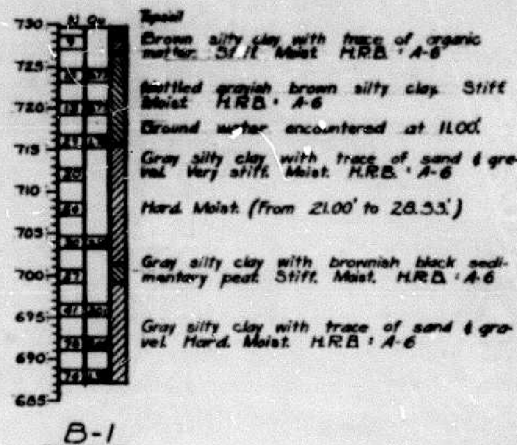
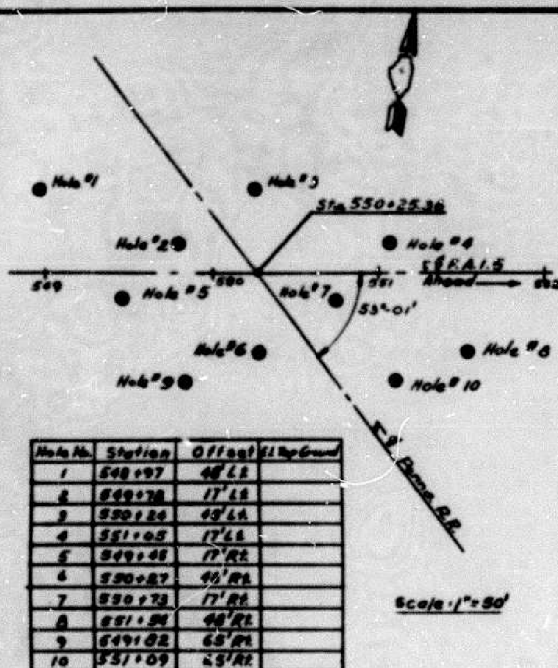


STATE OF ILLINOIS
DEPARTMENT OF PUBLIC WORKS & BUILDINGS
DIVISION OF HIGHWAYS

DATE	BY	PROJECT	NO.	OF
FAL 74	TADZEWELL	89	48	
F.A.I. ROUTE 74		SECTION 90-14VB		



DESIGNED	_____
CHECKED	_____
DRAWN R. M.	_____
CHECKED D. N.	_____

SOIL BORING
F.A.I. ROUTE 74-SECTION 90-14VB
F.A.I. ROUTE 74 OVER PENNA RAILROAD
STATION 550+24.84
TAZEWELL COUNTY
WARREN AND VAN PRAAG, INC.
CONSULTING ENGINEERS - DECATUR, ILLINOIS

FOR INFORMATION ONLY

benesch
engineers · scientists · planners
Alfred Benesch & Company
205 North Michigan Avenue, Suite 2400
Chicago, Illinois 60601
312-565-0450 Job No. 10056

FILE NAME =	USER NAME = mbecker	DESIGNED - MFB	REVISED -
xxxxxx_68620_21.exist10.dgn	PLOT SCALE =	CHECKED - MRB	REVISED -
	PLOT DATE = 7/16/2012	DRAWN - MFB	REVISED -
		CHECKED - MRB	REVISED -

STATE OF ILLINOIS
DEPARTMENT OF TRANSPORTATION

EXISTING PLANS 10 OF 11
STRUCTURE NO. 090-0014 / 0015 REMOVAL
SHEET NO. SR21 OF SR22 SHEETS

F.A.I. R.T.E.	SECTION	COUNTY	TOTAL SHEETS	SHEET NO.
74	90-14R(14HB-4,14,14HB)BR	TAZEWELL	2433	2089
			CONTRACT NO. 68620	
ILLINOIS FED. AID PROJECT				

X:\100005\10056\Engineer\ing-Document\Phase I\174 over RRA\Final\xxxxxxx_68620_21.exist10.dgn 7:46:47 AM 7/16/2012