

PLAN

MINIMUM BAR LAP
(Barrier Extension)
#4 bar = 2'-0"



TOTAL BILL OF MATERIAL

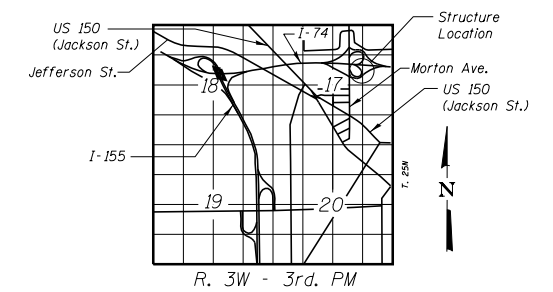
ITEM	UNIT	SUPER	SUB	TOTAL
Concrete Superstructure	Cu. Yd.	6.0		6.0
Reinforcement Bars, Epoxy Coated	Pound	1,040		1,040

INDEX OF SHEETS

- SH1 General Plan and Elevation
- SH2 Ramp D Retaining Wall Existing Plans 1 of 3
- SH3 Ramp D Retaining Wall Existing Plans 2 of 3
- SH4 Ramp D Retaining Wall Existing Plans 3 of 3

SCOPE OF WORK

- 1. Increase height of barrier.



LOCATION SKETCH

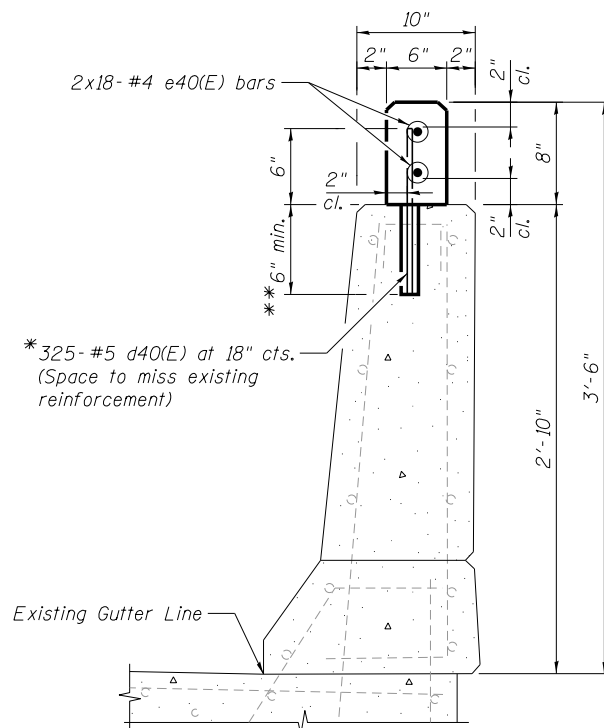
REINFORCEMENT BILL OF MATERIAL

Bar	No.	Size	Length	Shape
d40(E)	325	#5	** 1'-0"	—
e40(E)	36	#4	29'-0"	—

Bars indicated thus 2x18- #4 etc. indicates 2 lines of bars with 18 lengths per line.

GENERAL NOTES:

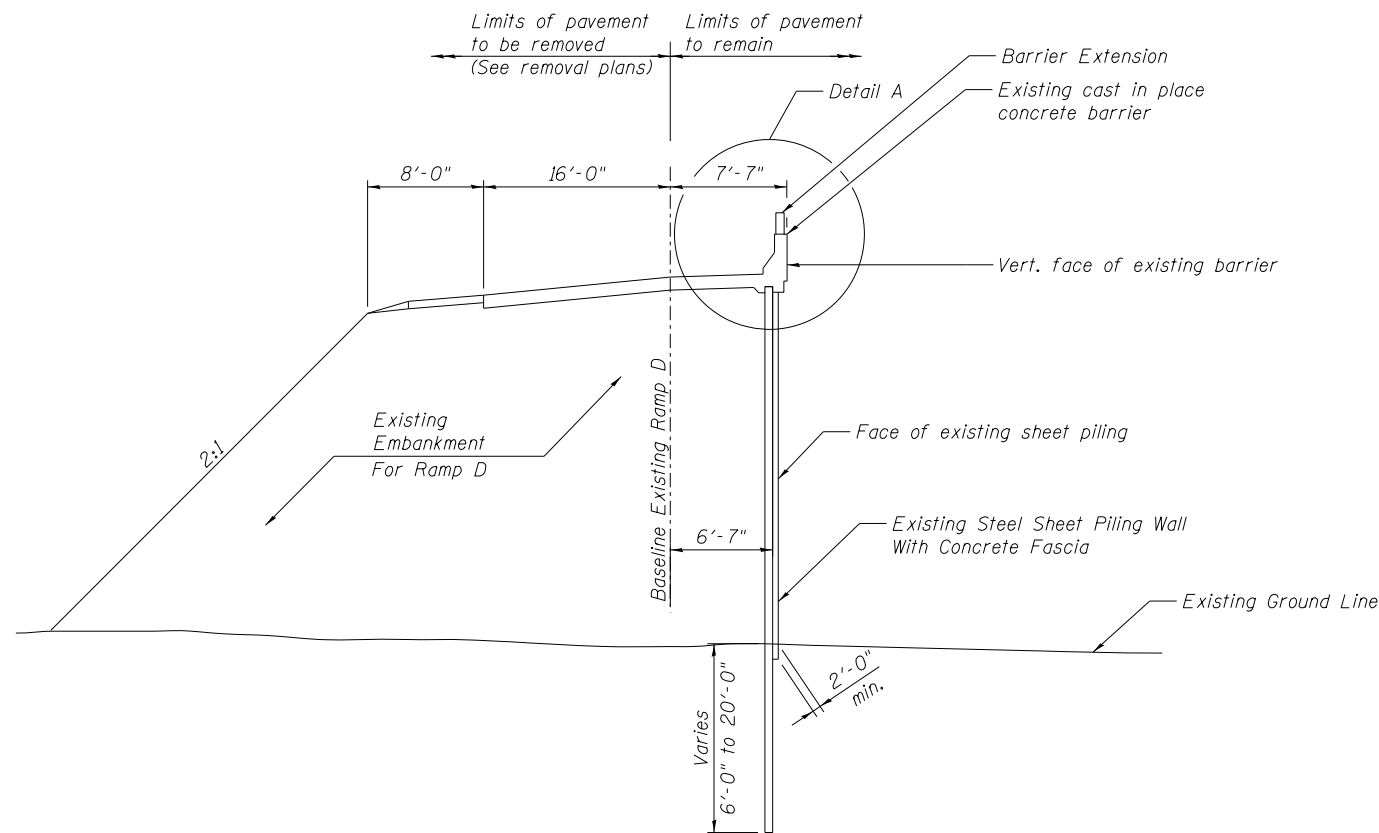
1. Reinforcement bars designated (E) shall be epoxy coated.
2. The Contractor shall exercise care during drilling and grouting to ensure that the barrier's integrity will not be detrimentally impacted. The Contractor shall repair any damage(s) to the barrier caused by his operation as directed by the Engineer at no additional cost to the Department.
3. Plan dimensions and details relative to existing plans are subject to nominal construction variations. The contractor shall field verify existing dimensions and details affecting new construction and make necessary approved adjustments prior to construction or ordering of materials. Such variations shall not be cause for additional compensation for a change in scope of the work, however, the Contractor will be paid for the quantity actually furnished at the unit price bid for the work.



DETAIL A

* Core and set #5 d40(E) bars according to Article 509.06 of the Standard Specifications. Cored holes shall be roughened or scored per manufacturer's recommendations. Cost to be included in Reinforcement Bars, Epoxy Coated.

** Contractor to increase depth as required by the adhesive manufacturer at no extra cost to the Department.



TYPICAL SECTION

benesch
engineers · scientists · planners

Alfred Benesch & Company
205 North Michigan Avenue, Suite 2400
Chicago, Illinois 60601
312-565-0450 Job No. 10056

FILE NAME =
XXXXXXXX.68620_01.rwl-rm.dgn

USER NAME = mbecker
DESIGNED - DMS
CHECKED - MRB
PLOT SCALE =
DRAWN - PRT
PLOT DATE = 7/17/2012
CHECKED - MRB
REVISED -

DESIGNED - DMS
CHECKED - MRB
DRAWN - PRT
CHECKED - MRB
REVISED -

REVISED -
REVISED -
REVISED -
REVISED -

**STATE OF ILLINOIS
DEPARTMENT OF TRANSPORTATION**

**GENERAL PLAN AND ELEVATION
RAMP D RETAINING WALL**

SHEET NO. SH1 OF SH4 SHEETS

F.A.I. RTE.	SECTION	COUNTY	TOTAL SHEETS	SHEET NO.
74	90-[14R(14HB-4,14,14HVB)BR]	TAZEWELL	2433	2091
CONTRACT NO. 68620				

ILLINOIS FED. AID PROJECT