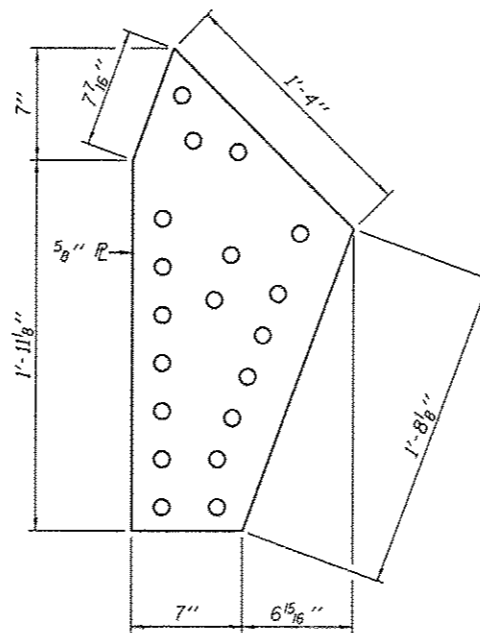
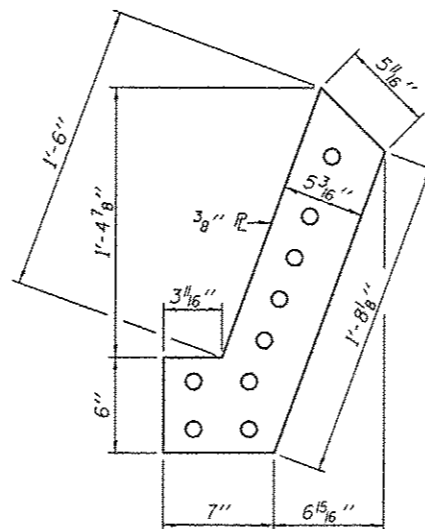


**REPAIR 10 DETAILS**  
Span 5 at M9W (Inside Gusset P Repair)

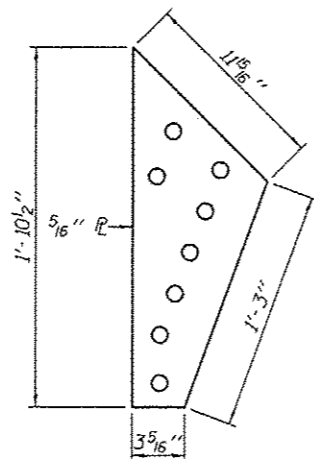
\* The Contractor shall field measure the M9W plates, angles and actual location of rivets prior to ordering or fabricating any plates. Any discrepancies from the plans or existing shop plans shall be brought to the attention of the Engineer prior to fabrication.



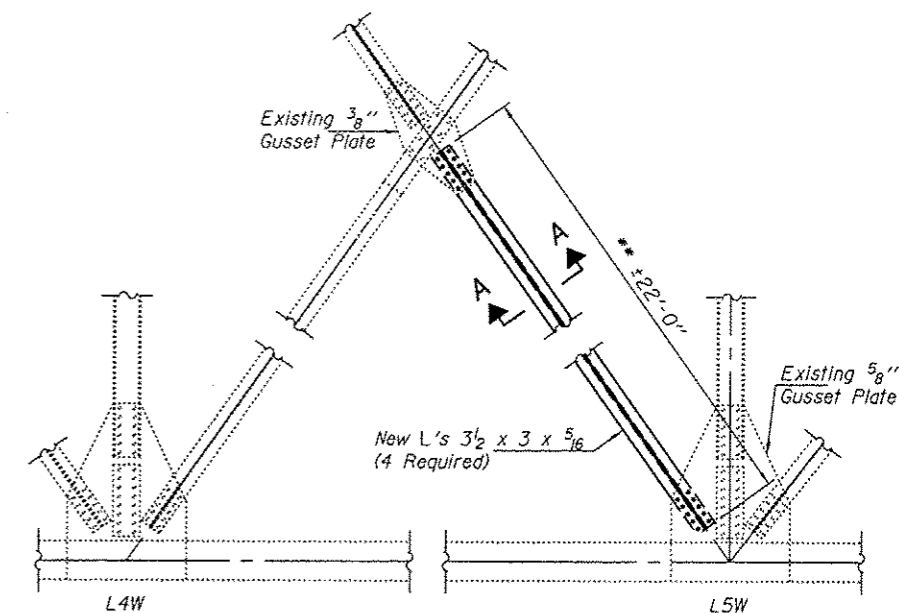
**\* REPAIR P A**  
(2-Required)



**\* REPAIR P B**  
(1-Required)

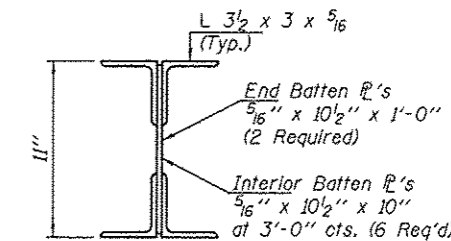


**\* REPAIR P C**  
(1-Required)



**REPAIR 11 DETAILS**  
Span 8, U4W-L5W at L5W

\*\* Actual dimension shall be field measured prior to ordering steel angles.



**SECTION A-A**

**SCOPE OF WORK FOR REPAIR 11**

1. Clean and prepare the existing surfaces at the repair area.
2. Field measure and document the exact locations of all existing batten plates that are located on the existing diagonal U4W-L5W.
3. Field measure and document rivet spacing on all existing batten plates that are located on the existing diagonal U4W-L5W.
4. Remove one of the four existing angles that make up diagonal U4W-L5W. Extreme care shall be practiced when removing the existing rivets from the gusset plates.
5. Install a new angle in the location where the existing angle was removed. Utilize the existing rivet holes in the gusset plate as a template for field drilling holes in the new angle.
6. Repeat Steps 4 & 5 for the remaining three angles. Only one angle may be removed and replaced at a time.
7. Utilize the field measurements obtained in Steps 2 & 3 to install the new batten plates.
8. Paint the repair area.

Note:  
The lower portion of member U4W-L5W shall be replaced in-kind.

**BILL OF MATERIAL**

ITEM	UNIT	QUANTITY
Structural Steel Repair	Pound	965

DESIGNED - MKC  
CHECKED - VP  
DRAWN - Kyle M. Steffen  
CHECKED - MKC VP

EXAMINED  
ACTING ENGINEER OF STRUCTURAL SERVICES  
PASSED  
ACTING ENGINEER OF BRIDGES AND STRUCTURES

DATE - JULY 26, 2012  
REVISED  
REVISED

STATE OF ILLINOIS  
DEPARTMENT OF TRANSPORTATION

REPAIR 10 & 11  
SN 062-0036

SHEET NO. 10 OF 10 SHEETS

F.A.S. RTE.	SECTION	COUNTY	TOTAL SHEETS	SHEET NO.
2369	(1048-D1)	MARSHALL	17	17
				CONTRACT NO. 68B16

ILLINOIS FED. AID PROJECT