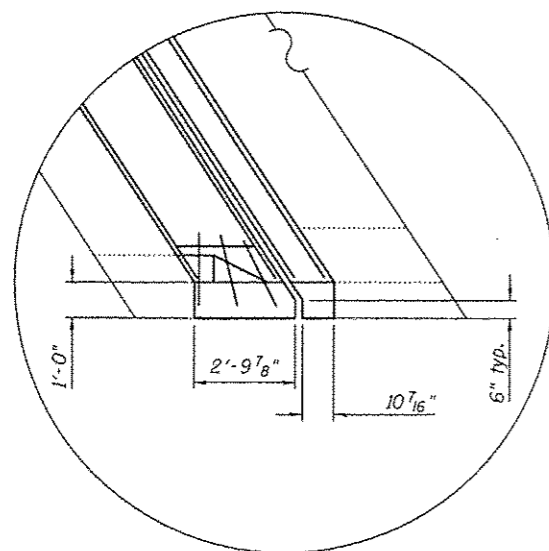
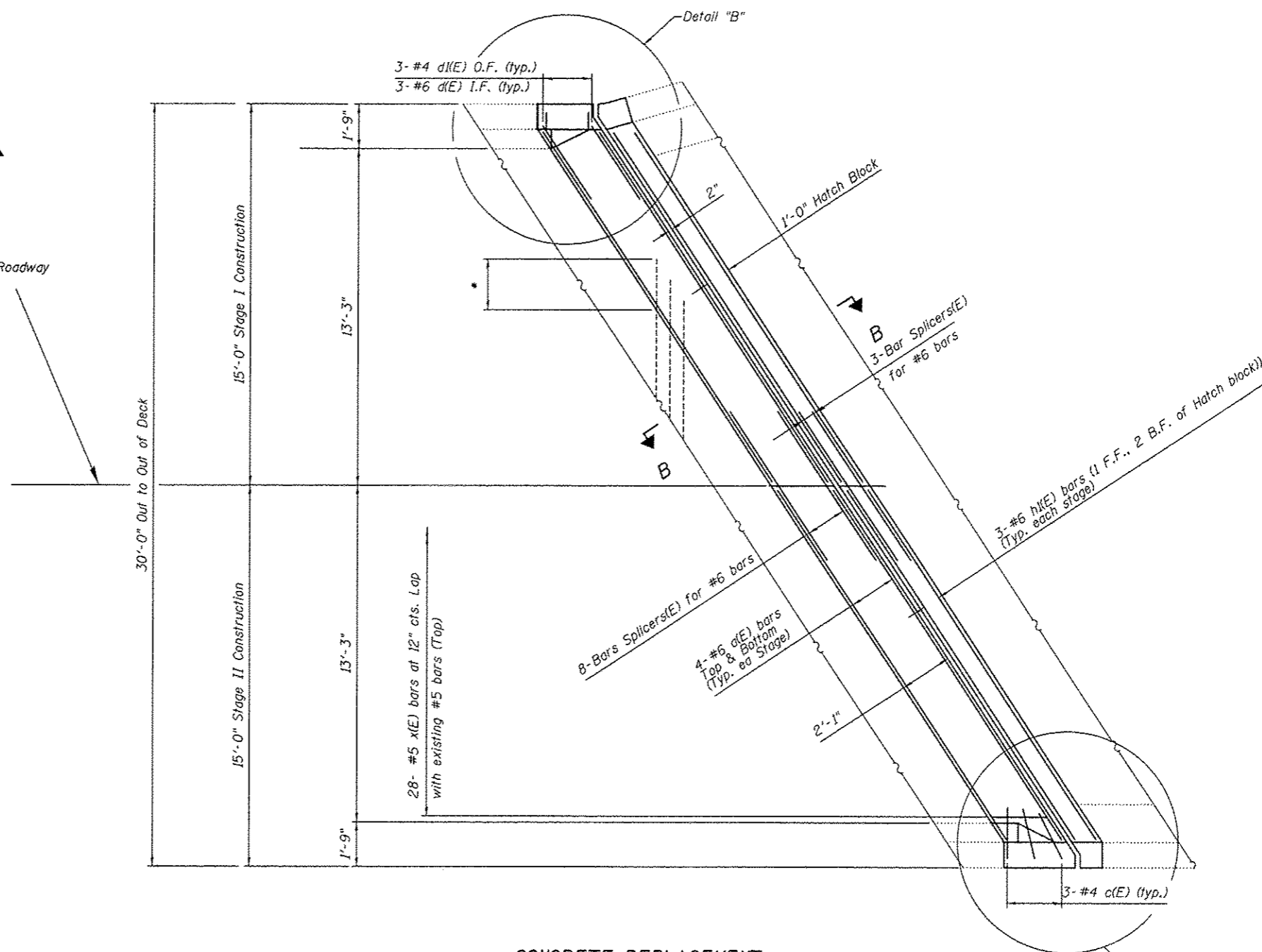


DETAIL "B"



DETAIL "A"

⊕ Roadway



CONCRETE REPLACEMENT

Note:

Dimensions are based on a Rolled Rail Strip Joint. If the Contractor elects to use the Weld Rail Strip Seal Joint, deck dimensions may require adjustments to satisfy the details on sheet 11 of 13.

* Existing transverse bars extending from deck into removed area shall be cut allowing 2'-0" to extend into the removed area. In addition, these cut bars shall be cleaned, straighten, and incorporated into the new construction.

Existing reinforcement bars extending into removal area shall be cleaned, straightened and incorporated into the new construction. Any reinforcement bars that are damaged during concrete removal shall be replaced with an approved bar splicer or anchorage system. Cost included with Concrete Removal.

See sheet 6 of 13 for Section B-B.

DESIGNED -	AYV
CHECKED -	ARS
DRAWN -	AYV
CHECKED -	

EXAMINED	<i>Timothy A. Dault</i>	DATE	7/31/12
PASSED	<i>Le. Carl Knapp</i>		

STATE OF ILLINOIS
DEPARTMENT OF TRANSPORTATION

JOINT REPLACEMENT (E. ABUT.)
SN 060-0160

RTE.	SECTION	COUNTY	TOTAL SHEETS	SHEET NO.
CH 1	1-HB-1	MADISON	28	19
			CONTRACT NO. 76F62	

SHEET NO. 5 OF 13 SHEETS

ILLINOIS FED. AID PROJECT