


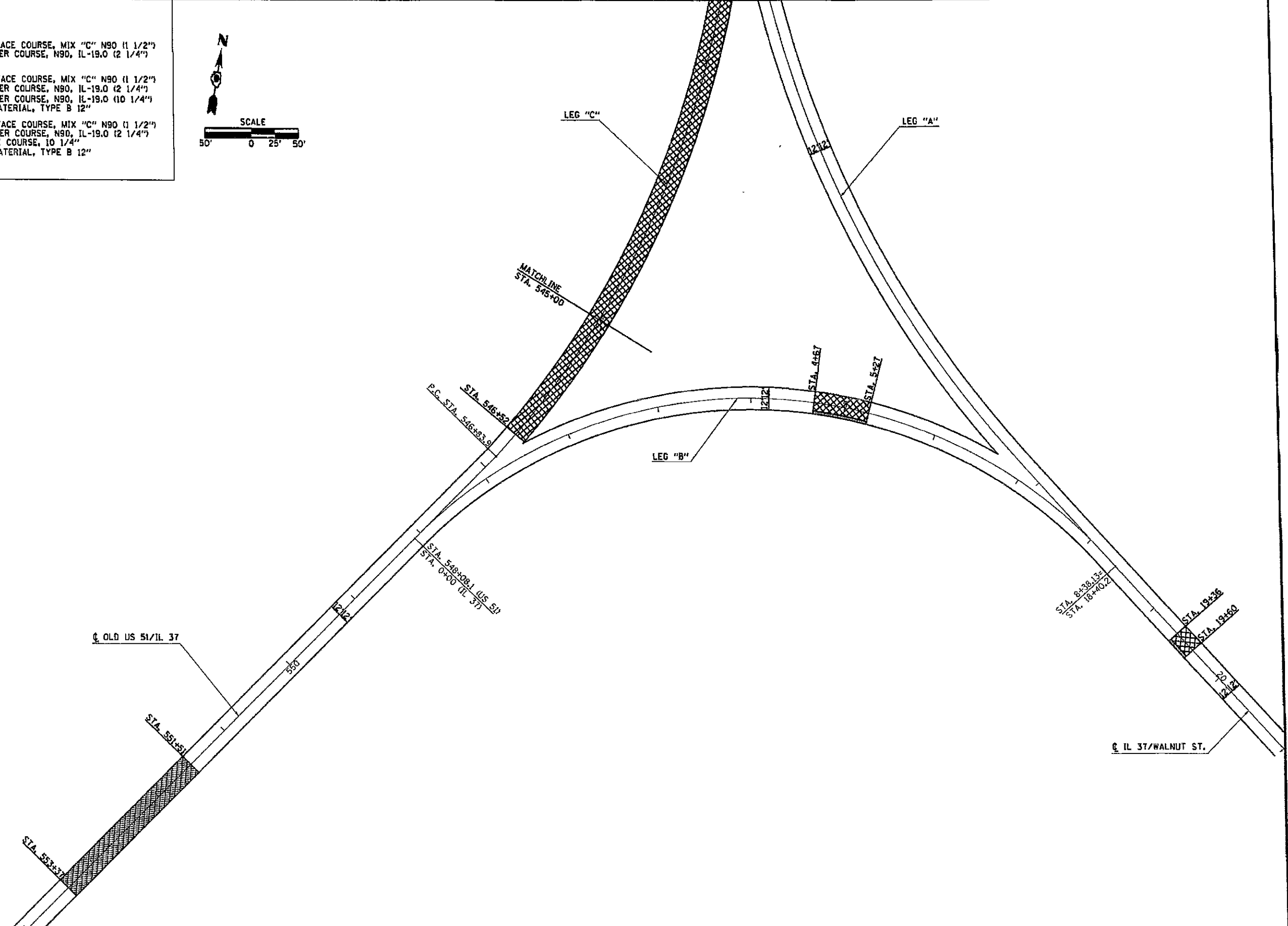
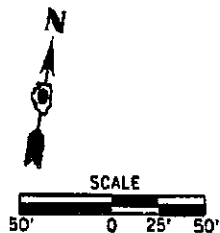


LEGEND

-  — HOT-MIX ASPHALT SURFACE COURSE, MIX "C" N90 (1 1/2")  
HOT-MIX ASPHALT BINDER COURSE, N90, IL-19.0 (2 1/4")
-  — HOT-MIX ASPHALT SURFACE COURSE, MIX "C" N90 (1 1/2")  
HOT-MIX ASPHALT BINDER COURSE, N90, IL-19.0 (2 1/4")  
HOT-MIX ASPHALT BINDER COURSE, N90, IL-19.0 (10 1/4")  
SUB-BASE GRANULAR MATERIAL, TYPE B 12"
-  — HOT-MIX ASPHALT SURFACE COURSE, MIX "C" N90 (1 1/2")  
HOT-MIX ASPHALT BINDER COURSE, N90, IL-19.0 (2 1/4")  
HOT-MIX ASPHALT BINDER COURSE, 10 1/4"  
SUB-BASE GRANULAR MATERIAL, TYPE B 12"



FILE NAME *	USER NAME = granleasn	DESIGNED -	REVISED -	<b>STATE OF ILLINOIS DEPARTMENT OF TRANSPORTATION</b>	<b>CONSTRUCTION SHEET</b>	F.A.P. RTE.	SECTION	COUNTY	TOTAL SHEETS	SHEET NO.	
es:\ps_work\psd\granleasn\d8312786\	id=stageconstruction.dgn	DRAWN -	REVISED -			VAR	DR CH RIF RES AND PATCH 2013-3	PULASKI	10	9	
	PLOT SCALE = 1/8" = 1' / in.	CHECKED -	REVISED -			SCALE: SHEET OF SHEETS STA. TO STA.		CONTRACT NO. 78329			
MODEL NAME#	PLOT DATE = 7/17/2012	DATE -	REVISED -			ILLINOIS FED. AID PROJECT					