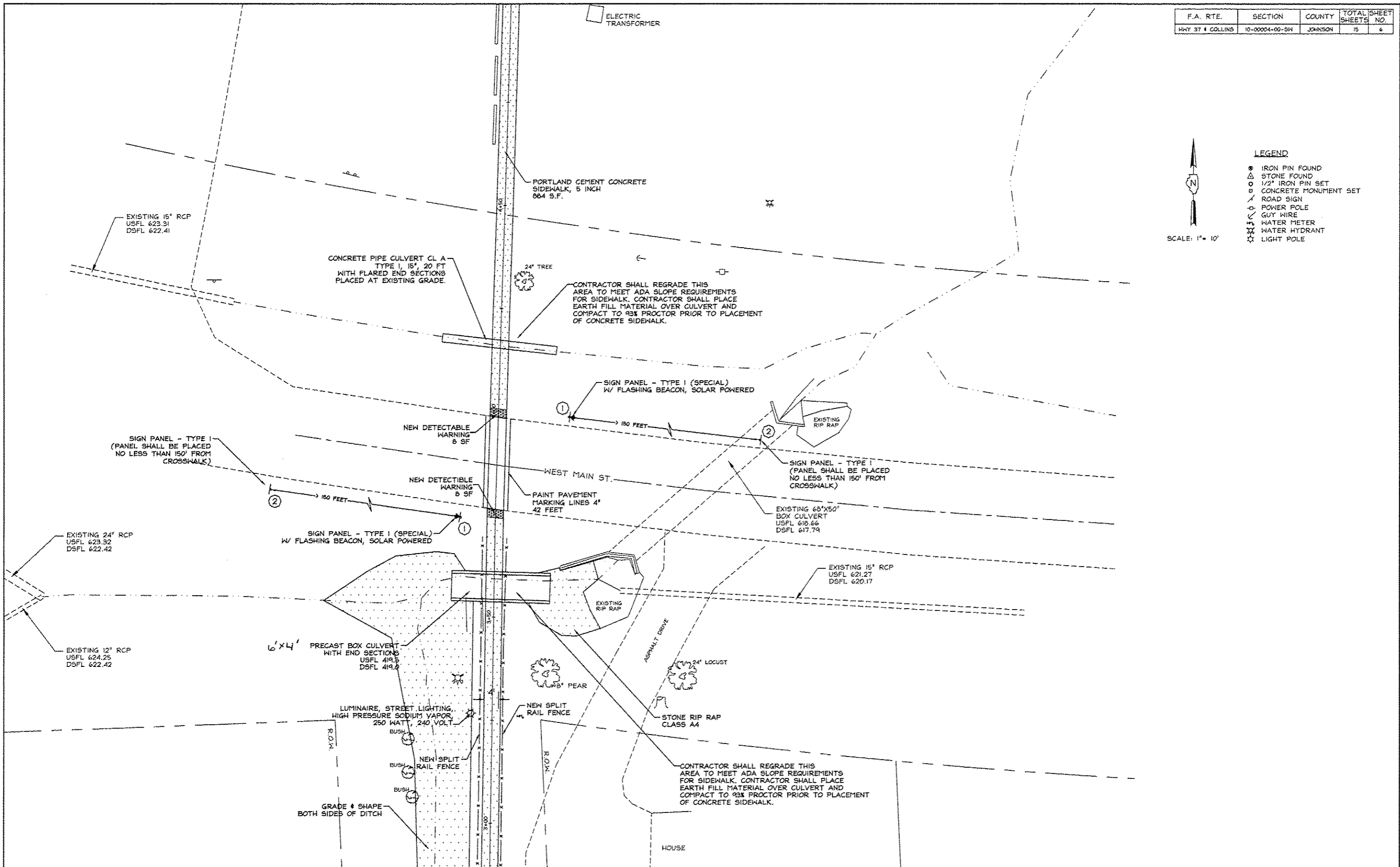


F.A. RTE.	SECTION	COUNTY	TOTAL SHEETS	SHEET NO.
HWY 97 & COLLINS	10-00004-00-SH	JOHNSON	15	6

SCALE: 1" = 10'

**LEGEND**

- IRON PIN FOUND
- ▲ STONE FOUND
- 1/2" IRON PIN SET
- CONCRETE MONUMENT SET
- ROAD SIGN
- ⊕ POWER POLE
- GUY WIRE
- ⊕ WATER METER
- ⊕ WATER HYDRANT
- ⊕ LIGHT POLE



NO.	DESCRIPTION	BY	DATE	NO.	DESCRIPTION	BY	DATE
					DESIGNED		
					DRAWN	WFL	3/27/12
					CHECKED	JHC	3/27/12

VILLAGE OF GOREVILLE  
 JOHNSON COUNTY, IL  
 SCHOOL SAFE WAY PLAN  
 PLAN SHEET

**JOHN H. CRAWFORD & ASSOCIATES, P.C.**  
 CIVIL ENGINEERS, LAND SURVEYORS  
 201 SOUTH DIVISION STREET, CARTERSVILLE, ILLINOIS 62919  
 PHONE (618) 965-6976 FAX (618) 965-4592  
 PROFESSIONAL DESIGN FIRM # 184-002885

SHEET NO.	
6	
ISSUE	DATE
A	3/27/12

C:\Users\jrcrawford\Documents\2012\10-00004-00-SH\10-00004-00-SH-06.dwg 6/13/2012 10:33:16 AM