

030

STATE OF ILLINOIS  
DEPARTMENT OF TRANSPORTATION

PROPOSED  
HIGHWAY PLANS

VARIOUS ROUTES  
DIST 8 WEED SPRAYING 2019-1  
WEED SPRAYING  
VARIOUS COUNTIES

INDEX OF SHEETS

1. COVER SHEET, INDEX OF SHEETS, MAP
2. HIGHWAY STANDARDS, SPRAY SCHEDULE, AND COMMITMENTS
3. SUMMARY OF QUANTITIES
- 4.-7. OMISSIONS/NO SPRAY SITES

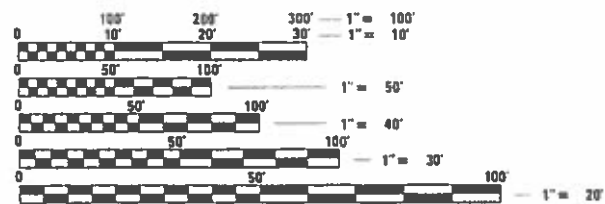
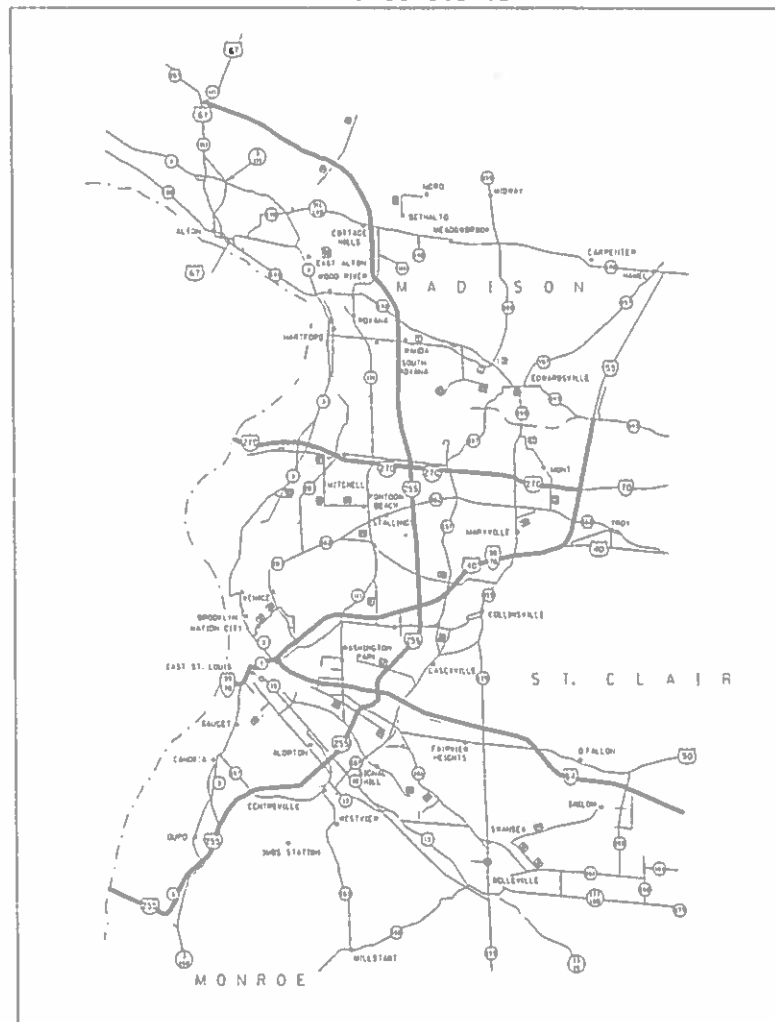
F.A. RTE.	SECTION	COUNTY	TOTAL SHEETS	SHEET NO.
*	**	ILLINOIS	7	1
CONTRACT NO. 76L92				

\* VARIOUS  
\*\* DIST 8 WEED SPRAYING 2019-1

D-98-104-18



C-98-318-18



FULL SIZE PLANS HAVE BEEN PREPARED USING STANDARD ENGINEERING SCALES. REDUCED SIZED PLANS WILL NOT CONFORM TO STANDARD SCALES. IN MAKING MEASUREMENTS ON REDUCED PLANS, THE ABOVE SCALES MAY BE USED.

J.U.L.I.E.  
JOINT UTILITY LOCATION INFORMATION FOR EXCAVATION  
1-800-892-0123  
OR 811

PROJECT ENGINEER: HERVE GELIN (618) 346-3179  
SQUAD LEADER: BILLIE OWEN (618) 346-3209  
PROJECT MANAGER: AL SCHULER (618) 349-2188  
CONTRACT NO. 76L92

STATE OF ILLINOIS  
DEPARTMENT OF TRANSPORTATION

SUBMITTED July 3, 2018  
[Signature] REGIONAL ENGINEER

Aug 17, 2018  
[Signature] ENGINEER OF DESIGN AND ENVIRONMENT

Aug 20, 2018  
[Signature] DIRECTOR OF HIGHWAYS PROJECT IMPLEMENTATION

PRINTED BY THE AUTHORITY  
OF THE STATE OF ILLINOIS

COMMITMENTS  
NONE

STANDARDS

701001-02  
701006-05  
701101-05  
701106-02  
701301-04  
701426-09  
701901-07

DISTRICT 8 WEED SPRAYING 2019-1			
COUNTY	ROUTE	MILES	ACRES
MADISON	FAI 55/70	30	182
	FAI 270	22	133
	FAI 255*	21	127
	ROUTE 255*	52	315
	FAI 55	20	121
ST. CLAIR	FAI 64	26	158
	FAI 255*	35	212
MONROE	FAI 255*	20	121
TOTAL		226	1370

50' SWATH  
\*TO INCLUDE MEDIANS WHERE FEASIBLE

IT IS ESTIMATED THAT THE CONTRACTOR WILL NEED 55 GALLONS OF "METHOD", OR APPROVED EQUIVALENT, 55 GALLONS OF "MILESTONE", OR APPROVED EQUIVALENT, AND 30 POUNDS OF "ESCORT", OR APPROVED EQUIVALENT FOR HERBICIDE SPRAYING. OFF ROAD AND ON ROAD QUANTITIES ARE APPROXIMATE AND ARE SUBJECT TO CHANGE.

• VARIOUS  
•• DIST 8 WEED SPRAYING 2019-1

MODEL: Default  
FILE: N:\GIS\_Pix\ILL08A\EID\NTEC\Illinois.gov\PIWDOT\Documents\DOT\_Offices\District 8\Projects\0876L92\CADD\data\CAD\sheet\0876L92-8F-std\sheet.dgn

USER NAME = lewiska	DESIGNED -	REVISED -	<b>STATE OF ILLINOIS DEPARTMENT OF TRANSPORTATION</b>	<b>HIGHWAY STANDARDS, SPRAY SCHEDULE, AND COMMITMENTS</b>	F.A. RTE.	SECTION	COUNTY	TOTAL SHEETS	SHEET NO.	
	DRAWN -	REVISED -			-	**	VARIOUS	7	2	
PLOT SCALE = 100,0000 ' / in.	CHECKED -	REVISED -			CONTRACT NO. 76L92					
PLOT DATE = 7/2/2018	DATE -	REVISED -			SCALE:	SHEET OF SHEETS	STA. TO STA.	ILLINOIS FED. AID PROJECT		

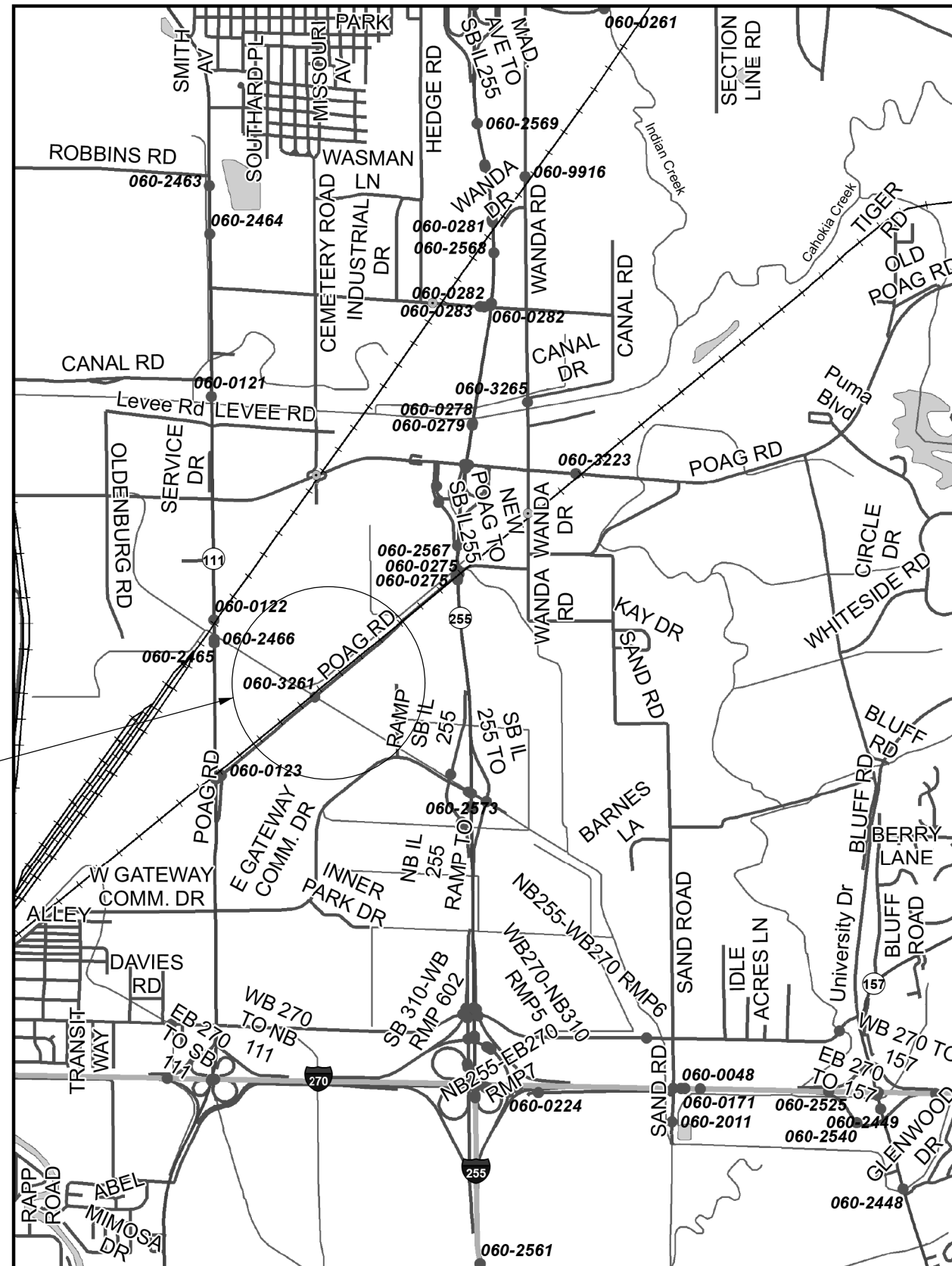
MODEL: Default  
 FILE: \\nrcs-pis\iulib\BIBID\NTEC\Illinois.gov\PI\DOT\Documents\DOT Office\DI\ierfct 8\Projects\0876192\CAD\data\CAD\sheet\0876192-rt-500.dgn

CODE NO.	ITEM	UNIT	TOTAL QUANTITY	CONSTR. CODE
				URBAN 100% STATE
				0031
67100100	MOBILIZATION	LSUM	1	1
K0012950	HERBICIDE SPRAYING	ACRE	1370	1370

- VARIOUS
- DIST 8 WEED SPRAYING 2019-1

USER NAME = lewiska	DESIGNED -	REVISED -	<b>STATE OF ILLINOIS DEPARTMENT OF TRANSPORTATION</b>	<b>SUMMARY OF QUANTITIES</b>				F.A. RTE.	SECTION	COUNTY	TOTAL SHEETS	SHEET NO.
PLOT SCALE = 100.0000 ' / in.	DRAWN -	REVISED -						-	**	VARIOUS	7	3
PLOT DATE = 7/2/2018	CHECKED -	REVISED -		SCALE: SHEET OF SHEETS STA. TO STA.				ILLINOIS FED. AID PROJECT		CONTRACT NO. 76L92		
	DATE -	REVISED -										





DO NOT SPRAY

MADISON COUNTY  
POAG R.R. PRAIRIE  
SECTION 24, T4N-R9W

- VARIOUS
- DIST 8 WEED SPRAYING 2019-1

MODEL: Default  
 FILE: MadCo\_Prairie\_POAG\_R.R.Prairie\_Section24.dwg  
 PROJECT: 08761921\_CADDATA\CAD\heeres\08761921-Pr-Plan.dwg

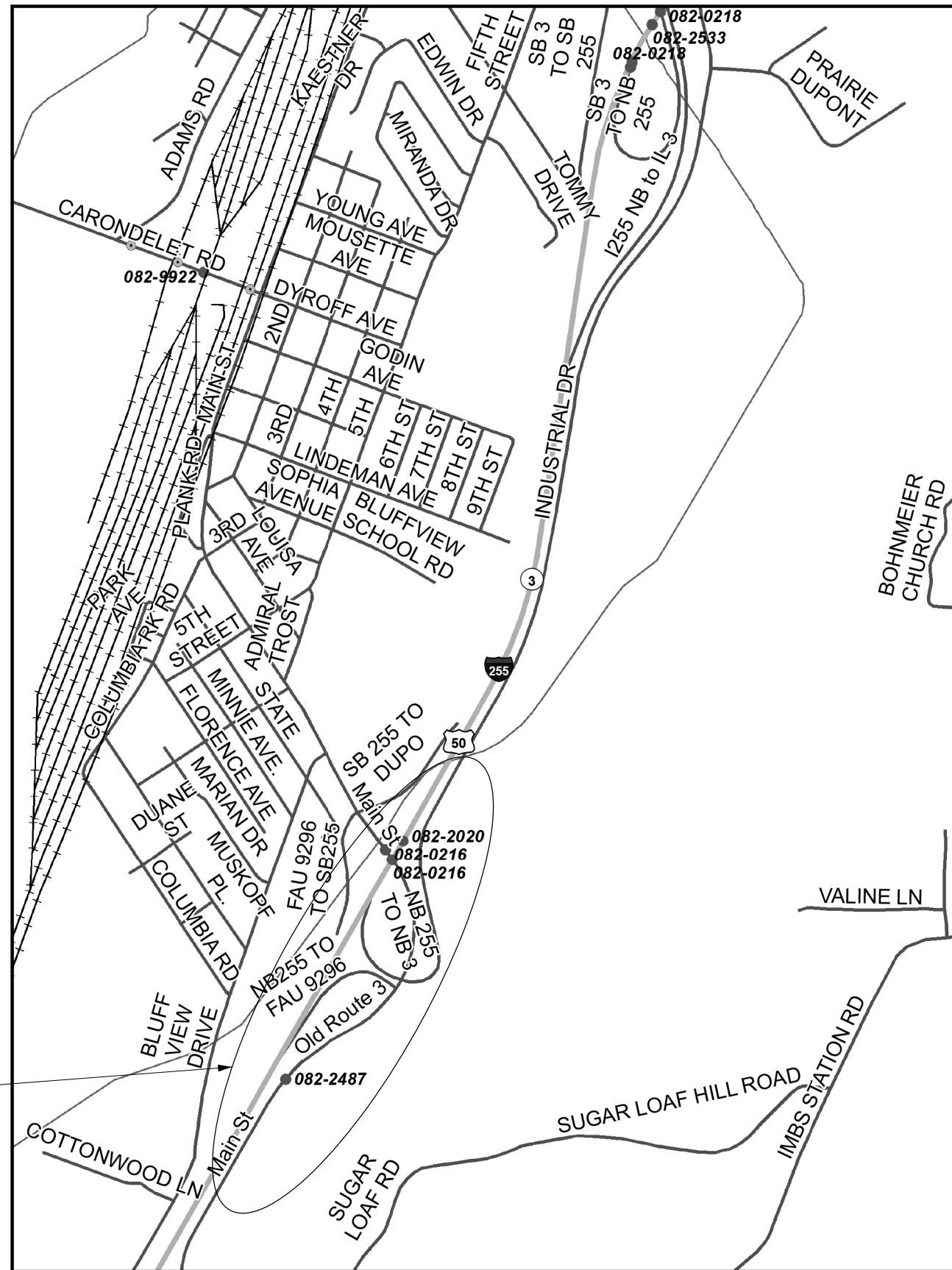
USER NAME = lewiska	DESIGNED -	REVISED -
	DRAWN -	REVISED -
PLOT SCALE = 100,0000' / in.	CHECKED -	REVISED -
PLOT DATE = 7/2/2018	DATE -	REVISED -

STATE OF ILLINOIS  
DEPARTMENT OF TRANSPORTATION

OMISSONS CHOUTEAU &  
GRANITE CITY TOWNSHIP

SCALE: SHEET OF SHEETS STA. TO STA.

F.A. RTE.	SECTION	COUNTY	TOTAL SHEETS	SHEET NO.
-	**	VARIOUS	7	5
CONTRACT NO. 76L92				
ILLINOIS FED. AID PROJECT				



DO NOT SPRAY

ST. CLAIR COUNTY  
 DUPO PRAIRIE/SUGAR LOAF PRAIRIE  
 SECTION 27 & 28, T1N-R10W

- VARIOUS
- DIST 8 WEED SPRAYING 2019-1

MODEL: Default  
 FILE: \\nrcs\p\1108\B&E\BID\NTEC\Illinois\gov\PIWDOT\Documents\DOT\_Offices\Director\B\Projects\08761921\CAD\data\CAD\sheet\08761921-fc-plan.dgn

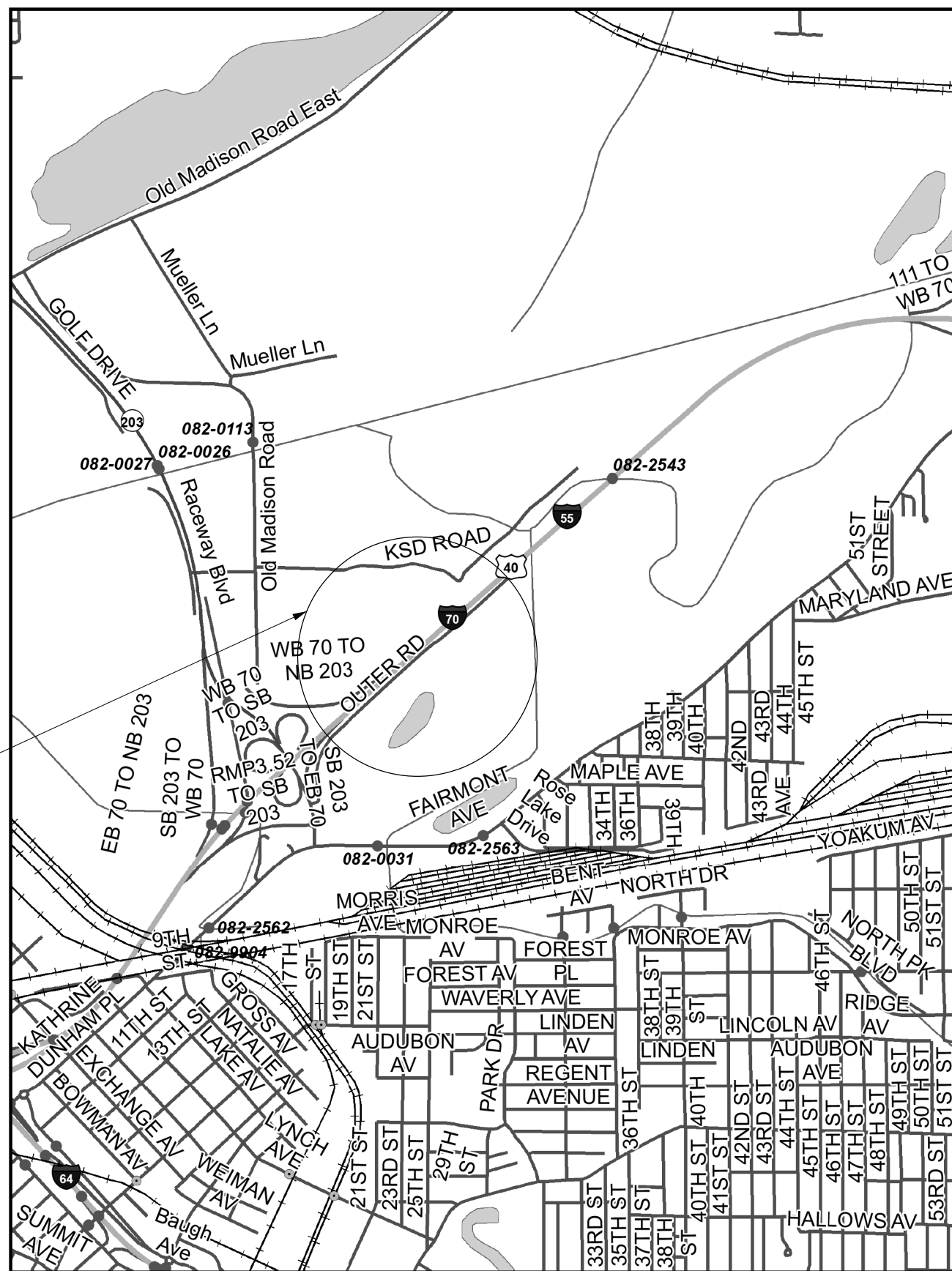
USER NAME = lewiska	DESIGNED -	REVISED -
	DRAWN -	REVISED -
PLOT SCALE = 100,0000' / in.	CHECKED -	REVISED -
PLOT DATE = 7/2/2018	DATE -	REVISED -

STATE OF ILLINOIS  
 DEPARTMENT OF TRANSPORTATION

OMISSIONS  
 SUGAR LOAF TOWNSHIP

SCALE: SHEET OF SHEETS STA. TO STA.

F.A. RTE.	SECTION	COUNTY	TOTAL SHEETS	SHEET NO.
-	**	VARIOUS	7	6
CONTRACT NO. 76L92				
ILLINOIS FED. AID PROJECT				



DO NOT SPRAY

ST. CLAIR COUNTY  
FAIRMONT CITY SITE  
T1N-R9W

- VARIOUS
- DIST 8 WEED SPRAYING 2019-1

**STATE OF ILLINOIS  
DEPARTMENT OF TRANSPORTATION**

**OMISSIONS  
FAIRMONT CITY SITE**

USER NAME = lewiska	DESIGNED -	REVISED -
	DRAWN -	REVISED -
PLOT SCALE = 100,0000' / in.	CHECKED -	REVISED -
PLOT DATE = 7/2/2018	DATE -	REVISED -

SCALE: SHEET OF SHEETS STA. TO STA.

F.A. RTE.	SECTION	COUNTY	TOTAL SHEETS	SHEET NO.
-	**		7	7
CONTRACT NO. 76L92				
ILLINOIS FED. AID PROJECT				