

036

09-21-2018 LETTING ITEM 036

STATE OF ILLINOIS
DEPARTMENT OF TRANSPORTATION

F.A.P. RTE.	SECTION	COUNTY	TOTAL SHEETS	SHEET NO.
761/304	1011-7, 119-1-3	GA/IE/CA	15	1
GREENE/JERSEY/CALHOUN		ILLINOIS	CONTRACT NO. 76L55	

FOR INDEX OF SHEETS, SEE SHEET NO. 2

PROPOSED HIGHWAY PLANS

FAP ROUTE 761/304 (IL 108/IL 100)
SECTION 1011-7, 119-1-3
PROJECT FBD-XFO0(566)
KAMPSVILLE & BRUSSELS FERRY LOADING DOCKS
CALHOUN, GREENE AND JERSEY COUNTIES

C-98-249-18

D-98-068-18

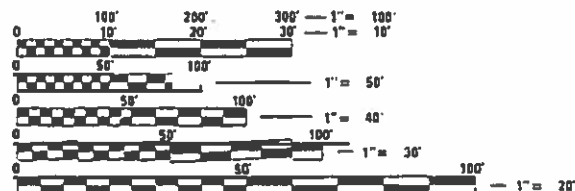


KAMPSVILLE FERRY

2017 ADT = 600 (ACTUAL)
2018 ADT = 600 (ESTIMATED)
2038 ADT = 750 (ESTIMATED)
SU = 15.0%, MU = 5.0%

BRUSSELS FERRY

2017 ADT = 900 (ACTUAL)
2018 ADT = 900 (ESTIMATED)
2038 ADT = 1050 (ESTIMATED)
SU = 3.3%, MU = 3.3%

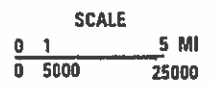
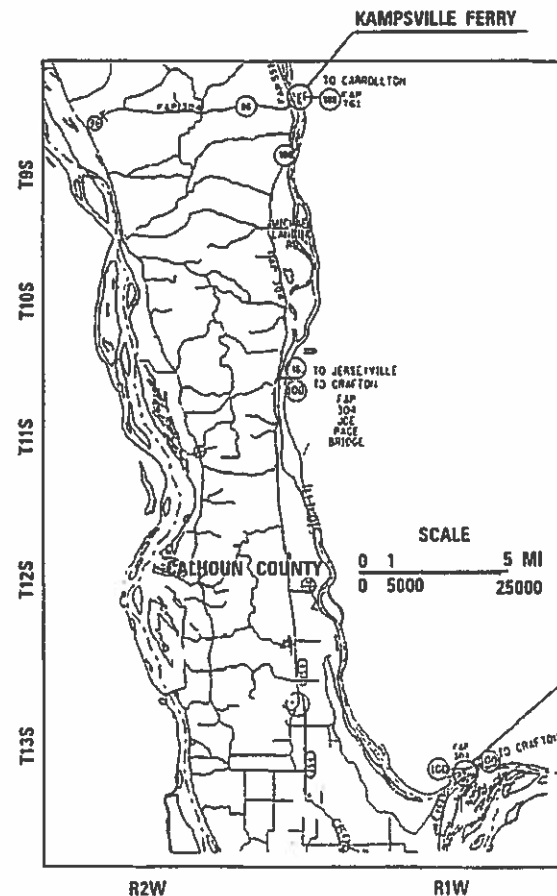


FULL SIZE PLANS HAVE BEEN PREPARED USING STANDARD ENGINEERING SCALES. REDUCED SIZED PLANS WILL NOT CONFORM TO STANDARD SCALES. IN MAKING MEASUREMENTS ON REDUCED PLANS, THE ABOVE SCALES MAY BE USED.

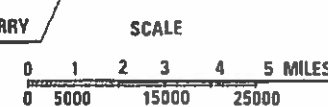
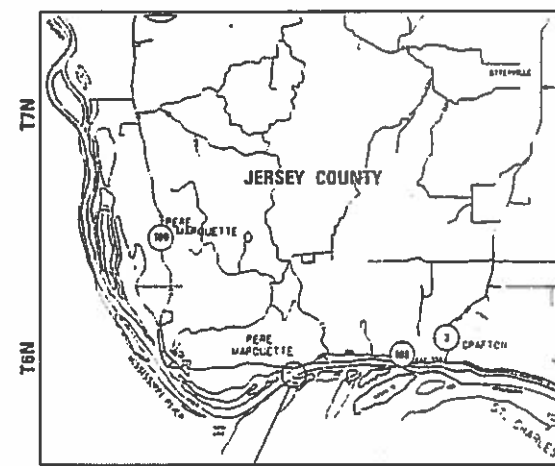
J.U.L.I.E.
JOINT UTILITY LOCATION INFORMATION FOR EXCAVATION
1-800-892-0123
OR 811

PROJECT ENGINEER: TIM PADGETT (618) 346-3325
PROJECT MANAGER: LIZ BURNSIDE (618) 346-3180

CONTRACT NO. 76L55



GROSS LENGTH = 533.80 FT. = 0.1011 MILE
NET LENGTH = 533.80 FT. = 0.1011 MILE



STATE OF ILLINOIS
DEPARTMENT OF TRANSPORTATION

SUBMITTED *June 15 2018*
Jeffrey Z. K...
REGIONAL ENGINEER

Aug 17 2018
[Signature]
ENGINEER OF DESIGN AND ENVIRONMENT

Aug 17 2018
Paul P. [Signature]
DIRECTOR OF HIGHWAYS PROJECT IMPLEMENTATION 3

PRINTED BY THE AUTHORITY
OF THE STATE OF ILLINOIS

INDEX OF SHEETS

1	COVER SHEET
2	INDEX, HIGHWAY STANDARDS, GENERAL NOTES, AND COMMITMENTS.
3	SUMMARY OF QUANTITIES
4	LOCATION MAP
5-15	STEEL DOCK PLANS

GENERAL NOTES

① ILLINOIS STATE LAW REQUIRES A 48-HOUR NOTICE TO BE GIVEN TO ALL UTILITIES WITHIN THE PROJECT AREA BEFORE DIGGING. FIELD MARKING OF FACILITIES MAY BE OBTAINED BY CONTACTING J.U.L.I.E. OR FOR NON-MEMBERS, THE UTILITY COMPANY DIRECTLY. AGENCIES KNOWN TO HAVE FACILITIES WITHIN THE PROJECT AREA ARE AS FOLLOWS:

UTILITY	ABOVE GROUND	BELOW GROUND
•AMEREN ILLINOIS (ELECTRIC&GAS)	X	X
•FRONTIER COMMUNICATIONS	X	X
•GRAFTON TELEPHONE COMPANY	X	X

MEMBERS OF J.U.L.I.E. CALL TOLL FREE (800)-892-0123 OR 811 ARE INDICATED BY •. NON J.U.L.I.E. MEMBERS MUST BE NOTIFIED INDIVIDUALLY.

② SIX CHANGEABLE MESSAGE SIGNS SHALL BE REQUIRED FOR THIS PROJECT. THEY SHALL BE PLACED TWO WEEKS PRIOR TO ANY LANE CLOSURE AND REMAIN UP FOR THE DURATION OF THE PROJECT. THE CHANGEABLE MESSAGE BOARDS SHALL BE PLACED AT THE DIRECTION OF THE ENGINEER.

COMMITMENTS

NONE

IDOT HIGHWAY STANDARDS

000001-06
001006
701901-07

BLR 21-9

MODEL: Default
FILE: \\nashc-pw\jll\B&E\IDNT\EG\Illinois\gov\PI\IDOT\Documents\IDOT_Offices\Directorct 8\Projects\0876L55\CAD\data\CAD\sheet\0876L55-ft-gmnotes.dgn

USER NAME = Burnsideem	DESIGNED -	REVISED -
	DRAWN -	REVISED -
PLOT SCALE = 100,0000 ' / in.	CHECKED -	REVISED -
PLOT DATE = 6/15/2018	DATE -	REVISED -

STATE OF ILLINOIS
DEPARTMENT OF TRANSPORTATION

INDEX OF SHEETS, HIGHWAY STANDARDS,
GENERAL NOTES & COMMITMENTS

SCALE: SHEET OF SHEETS STA. TO STA.

F.A.P. RTE.	SECTION	COUNTY	TOTAL SHEETS	SHEET NO.
761/304	101-7, 119-I-3	GRN/JERS/CALH	15	2
GREENE/JERSEY/CALHOUN		CONTRACT NO. 76L55		
ILLINOIS		FED. AID PROJECT		

SUMMARY OF QUANTITIES				CONSTRUCTION CODE		
				CALHOUN NONE 0044 RURAL	GREENE NONE 0044 RURAL	JERSEY NONE 0044 RURAL
CODE NO.	ITEM	UNIT	TOTAL QUANTITY			
67100100	MOBILIZATION	L SUM	1	0.34	0.33	0.33
70101830	TRAFFIC CONTROL AND PROTECTION, STANDARD BLR 21	L SUM	1	0.34	0.33	0.33
X0327107	STEEL DOCKS	EACH	5	2	1	2
X0327108	RELOCATE FERRY DOCKS	EACH	2	2		
X0327109	REMOVE FERRY DOCKS	EACH	4	2	1	1
X7015005	CHANGEABLE MESSAGE SIGN	CAL DA	99	49	16	34

MODEL: Default
FILE: \\nas101.pva\ill08a\EBID\NTEC\Illinois\gov\PIV\DOT\Documents\1\DOT_Offices\Director\B\Projects\0876L55\CAD\data\CAD\sheet\0876L55-rt-500.dgn

USER NAME = Burnsideem	DESIGNED -	REVISED -
	DRAWN -	REVISED -
PLOT SCALE = 100.0000 ' / in.	CHECKED -	REVISED -
PLOT DATE = 6/19/2018	DATE -	REVISED -

**STATE OF ILLINOIS
DEPARTMENT OF TRANSPORTATION**

SUMMARY OF QUANTITIES

SCALE: SHEET OF SHEETS STA. TO STA.

F.A.P. RTE. 761/304	SECTION 101-7, 119-I-3	COUNTY CALH/GRN/JER	TOTAL SHEETS 15	SHEET NO. 3
CALHOUN/GREENE/JERSEY			CONTRACT NO. 76L55	
ILLINOIS FED. AID PROJECT				



PROPOSED STEEL DOCKS

REMOVE FERRY DOCK

PROPOSED STEEL DOCK

NOTE:

RELOCATE FERRY DOCKS:
TWO OF THE EXISTING FERRY DOCKS WILL BE KEPT AS SPARES, ONE AT BRUSSELS AND ONE AT KAMPSVILLE. THE LOCATION OF THE SPARES WILL BE DETERMINED BY THE ENGINEER.

REMOVE FERRY DOCKS:
A TOTAL OF FOUR DOCKS WILL BE REMOVED WITH THIS CONTRACT. THREE EXISTING DOCKS AND THE SPARE DOCK ON THE CALHOUN SIDE OF BRUSSELS FERRY.



PROPOSED STEEL DOCK

PROPOSED STEEL DOCK

MODEL: Default
FILE: N:\m\c\p\1108\B&E\BID\NTEC\Illinois\gov\PIV\DOT\Documents\1\DOT_Offices\District 8\Projects\0876L55\CADD\data\CAD\sheet\0876L55-4-1-eban.dgn

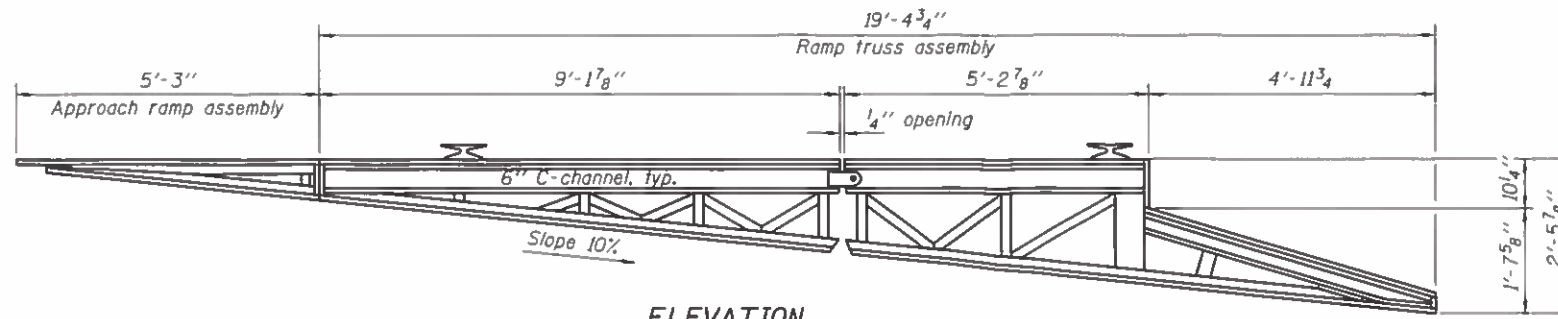
USER NAME = Burnsideem	DESIGNED -	REVISED -
	DRAWN -	REVISED -
PLOT SCALE = 100,0000' / in.	CHECKED -	REVISED -
PLOT DATE = 6/15/2018	DATE -	REVISED -

**STATE OF ILLINOIS
DEPARTMENT OF TRANSPORTATION**

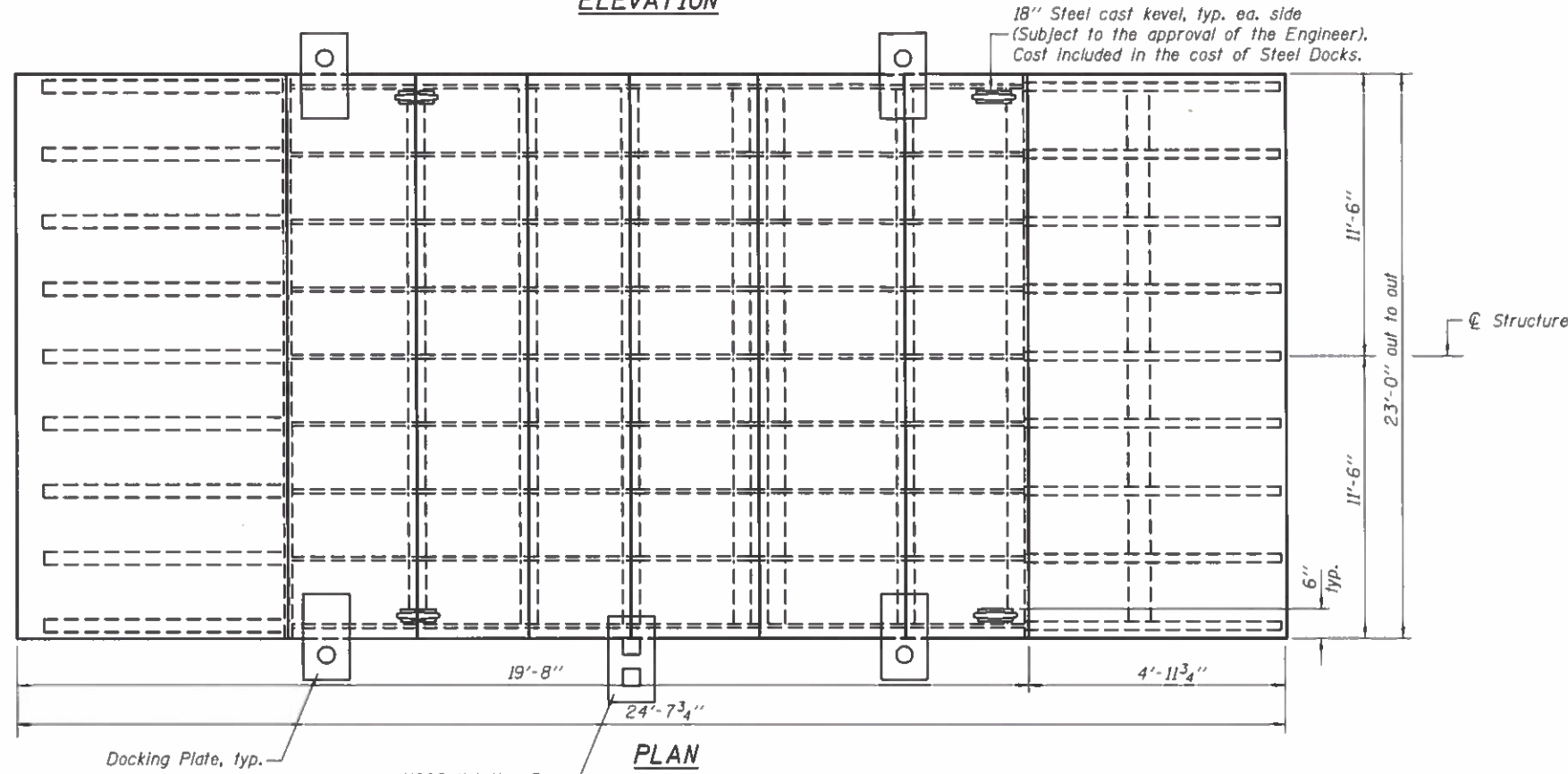
LOCATION MAP

SCALE: SHEET OF SHEETS STA. TO STA.

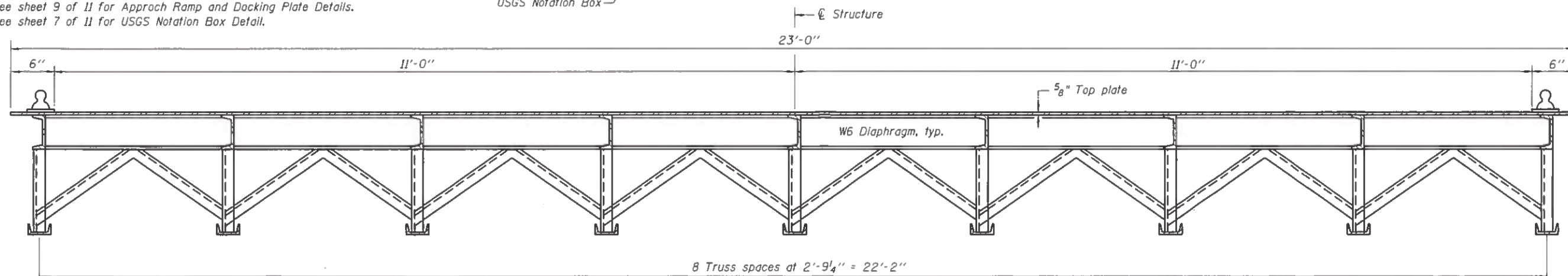
F.A.P. RTE.	SECTION	COUNTY	TOTAL SHEETS	SHEET NO.
761/304	101-7, 119-1-3	GRN/JER/CALH	15	4
GREEN/JERSEY/CALHOUN		CONTRACT NO. 76L55		
ILLINOIS FED. AID PROJECT				



ELEVATION



See sheet 9 of 11 for Approach Ramp and Docking Plate Details.
 See sheet 7 of 11 for USGS Notation Box Detail.



CROSS SECTION

GENERAL NOTES

Calculated weight of Structural Steel for each steel dock = 27,580 Lbs. (M 270, Grade 50).

Field welding of construction accessories will not be permitted to the structure.

The Contractor shall review the geometry of component members based on anticipated cutting and assembly methods. Minor deviations from contract details shall be noted on the shop drawings submitted for the Engineer's approval, but will not justify additional compensation. Significant proposed changes (member size(s), joint configuration, etc.) must be accepted by the Engineer before shop drawing submission.

The organic zinc/epoxy/urethane paint system shall be used, with all coats shop applied, unless otherwise noted. The color of the final finish coat shall be Moderate Yellow, Munsell No. 10YR 7/8.

The Contractor shall relocate or remove existing ferry dock ramp as directed by the Engineer. See Roadway Plans and Special Provisions.

Corrugated bearing surfaces of 5/8" top diamond plate shall be ground down to provide a smooth surface for welding of docking plates, kevels, and USGS notation box.

The Fabricator shall assemble the hinges to ensure proper fit up and movement of the hinge assembly. Documentation shall be provided for the Engineer's approval.

TOTAL BILL OF MATERIAL

Item	Unit	Total
Steel Docks	Each	5



EXPIRES 11-30-2018

DATE - AUGUST 21, 2018

STATE OF ILLINOIS
 DEPARTMENT OF TRANSPORTATION

STEEL DOCK
 (BRUSSELS AND KAMPSVILLE FERRY)

• 761/304
 •• GREENE AND JERSEY

STEEL DOCK
 (BRUSSELS AND KAMPSVILLE FERRY)
 F.A.P. RTE. 761/304 (IL 108/ IL 100)
 SECTION 1011-7 AND 1191-3
 GREENE & JERSEY COUNTY

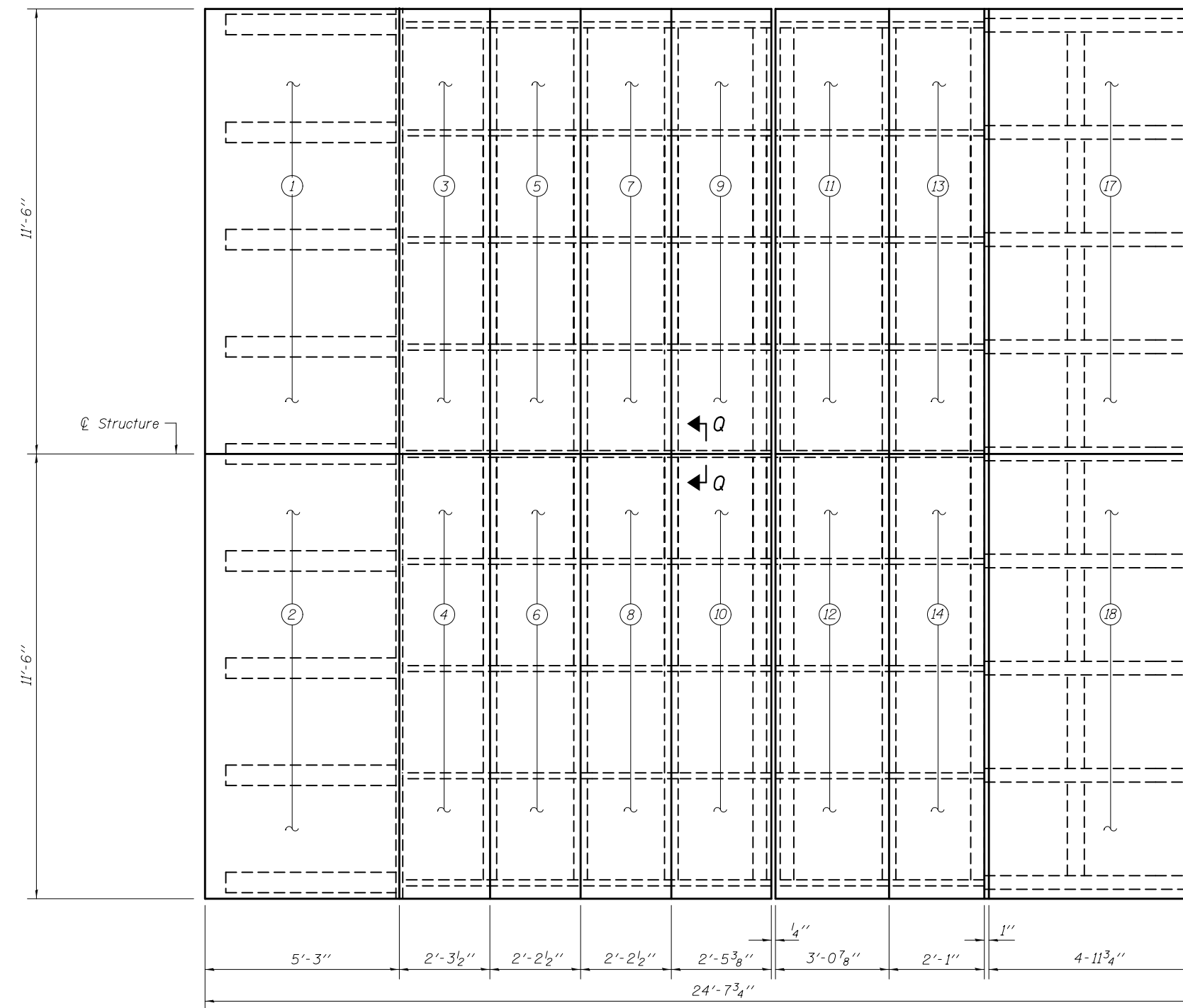
DESIGNED - *G. Paul Pitt*
 CHECKED - *Dambino Gurbly*
 DRAWN - TIM CARNEY
 CHECKED - *DHR/PG/GR*

EXAMINED - *Jan S. J. [Signature]*
 ENGINEER OF BRIDGE DESIGN
 PASSED - *David Carl Puzey*
 ENGINEER OF BRIDGES AND STRUCTURES

F.A.P. RTE.	SECTION	COUNTY	TOTAL SHEETS	SHEET NO.
	1011-7 & 1191-3	**	15	5
CONTRACT NO. 76L55				
(ILLINOIS) FED. AID PROJECT				

**PLATE ASSEMBLY
BILL OF MATERIALS
FOR ONE STEEL DOCK**

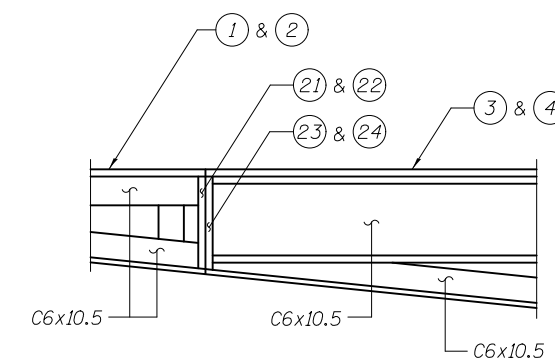
Plate No.	Description	Estimated weight (lb.)
1	Plate - Top $\frac{5}{8}$ " steel PL	1570
2		1570
3		681
4		681
5		651
6		651
7		651
8		651
9		728
10		728
11	Plate - Top $\frac{5}{8}$ " steel PL	914
12		914
13		619
14		619
15	Plate - Strike 1" steel PL	408
16		408
17	Plate - Apron rub $\frac{3}{4}$ " steel PL	1876
18		1876
19	Plate - Front $\frac{3}{4}$ " steel PL	71
20		71
21	Plate - Front $\frac{1}{2}$ " steel PL	118
22		118
23	Plate - Rear $\frac{1}{2}$ " steel PL	120
24		120
25	Plate - Skid $\frac{1}{2}$ " steel PL	416
26		849
27		947
Total weight of plate assembly		19,026



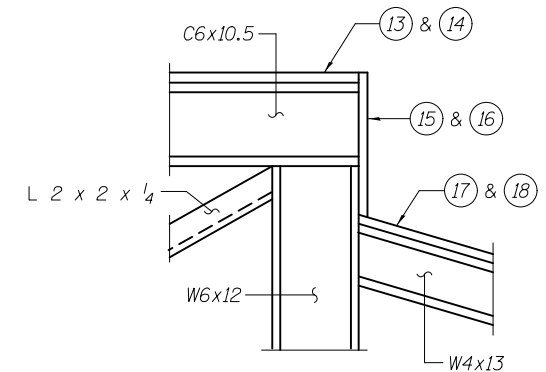
PLAN

(Shows the outside edge of the top plates)
Dimensions shown do not include the $\frac{3}{8}$ " gap between plates 3 thru 10 and 11 thru 14.
There is no gap between plates 1 & 3 and 2 & 4.

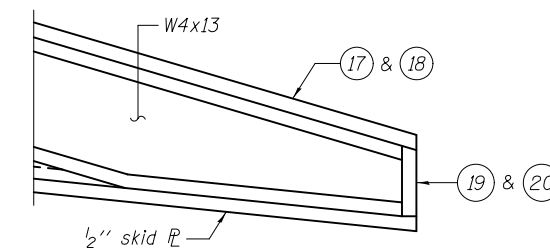
Notes: Diamond plating shall be used for all areas subjected to vehicular traffic.
See sheet 3 of 11 for plate dimensions.
See sheet 8 of 11 for the location of Details A, B, & C.
See sheet 10 of 11 for Section Q-Q.



DETAIL A



DETAIL B



DETAIL C

DESIGNED - DAVID RICHTER
CHECKED - PAUL GURKLYS
DRAWN - TIM CARNEY
CHECKED - DHR/PG/GRA

EXAMINED _____
PASSED _____
Jaime F. J. [Signature]
ENGINEER OF BRIDGES AND STRUCTURES

DATE - AUGUST 21, 2018

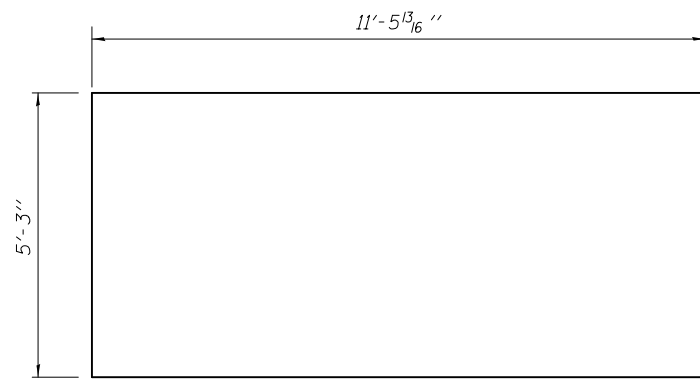
**STATE OF ILLINOIS
DEPARTMENT OF TRANSPORTATION**

**PLATE ASSEMBLY
(BRUSSELS AND KAMPSVILLE FERRY)**

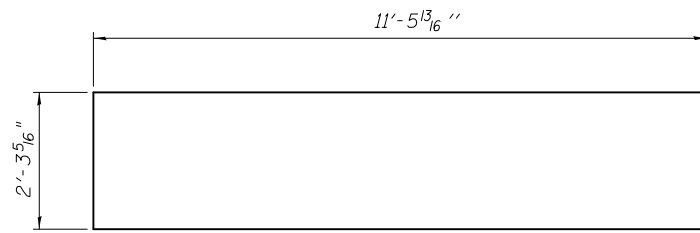
SHEET NO. 2 OF 11 SHEETS

• 761/304
• GREENE AND JERSEY

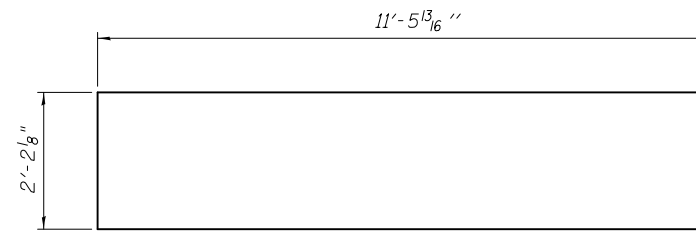
F.A.P. RTE.	SECTION	COUNTY	TOTAL SHEETS	SHEET NO.
•	101I-7 & 1191-3	••	15	6
CONTRACT NO. 76L55			ILLINOIS FED. AID PROJECT	



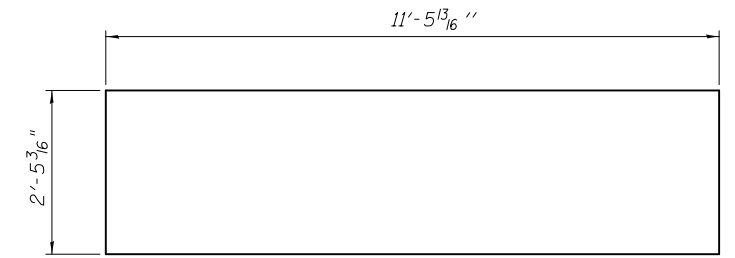
TOP PLATES 1 & 2
5/8" steel PL



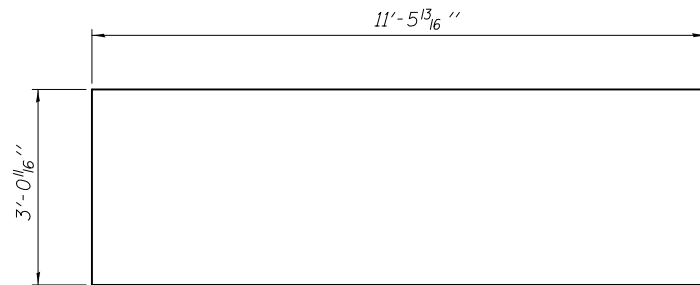
TOP PLATES 3 & 4
5/8" steel PL



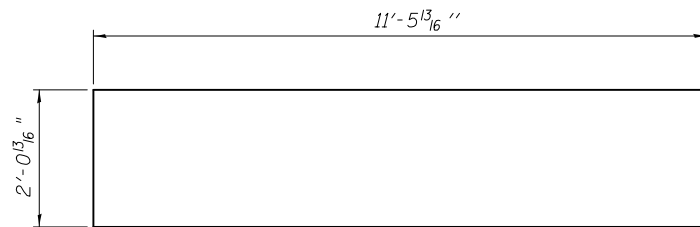
TOP PLATES 5, 6, 7 & 8
5/8" steel PL



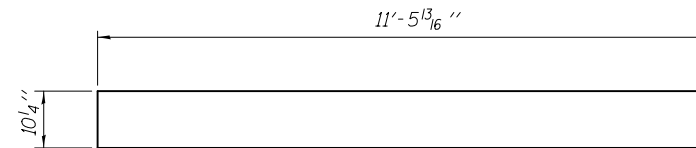
TOP PLATES 9 & 10
5/8" steel PL



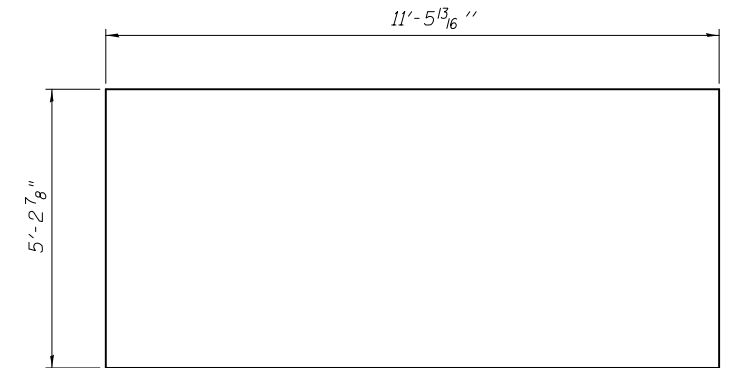
TOP PLATES 11 & 12
5/8" steel PL



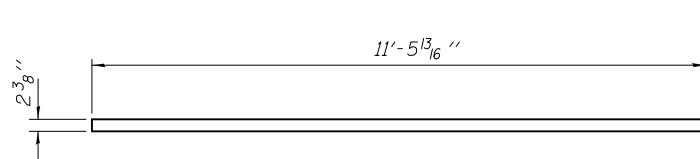
TOP PLATES 13 & 14
5/8" steel PL



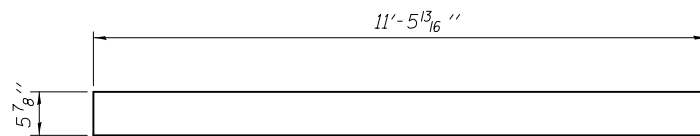
STRIKE PLATES 15 & 16
1" steel PL



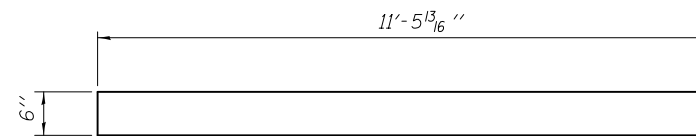
APRON RUB PLATES 17 & 18
3/4" steel PL



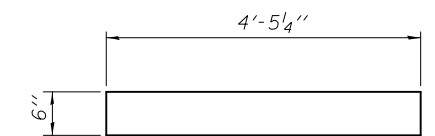
FRONT PLATES 19 & 20
3/4" steel PL



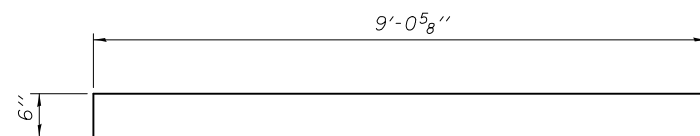
FRONT PLATES 21 & 22
1/2" steel PL



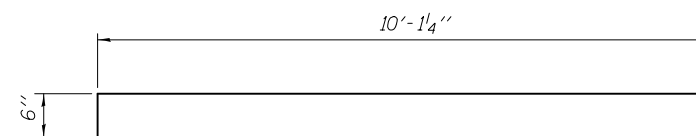
REAR PLATES 23 & 24
1/2" steel PL



SKID PLATE 25
1/2" steel PL
(9 required)



SKID PLATE 26
1/2" steel PL
(9 required)



SKID PLATE 27
1/2" steel PL
(9 required)

Notes: For location of plates 25, 26, & 27, see sheet 8 of 11.

DESIGNED - DAVID RICHTER
CHECKED - PAUL GURKLYS
DRAWN - TIM CARNEY
CHECKED - DHR/PG/GRA

EXAMINED _____
PASSED _____
ENGINEER OF BRIDGE DESIGN
ENGINEER OF BRIDGES AND STRUCTURES

DATE - AUGUST 21, 2018

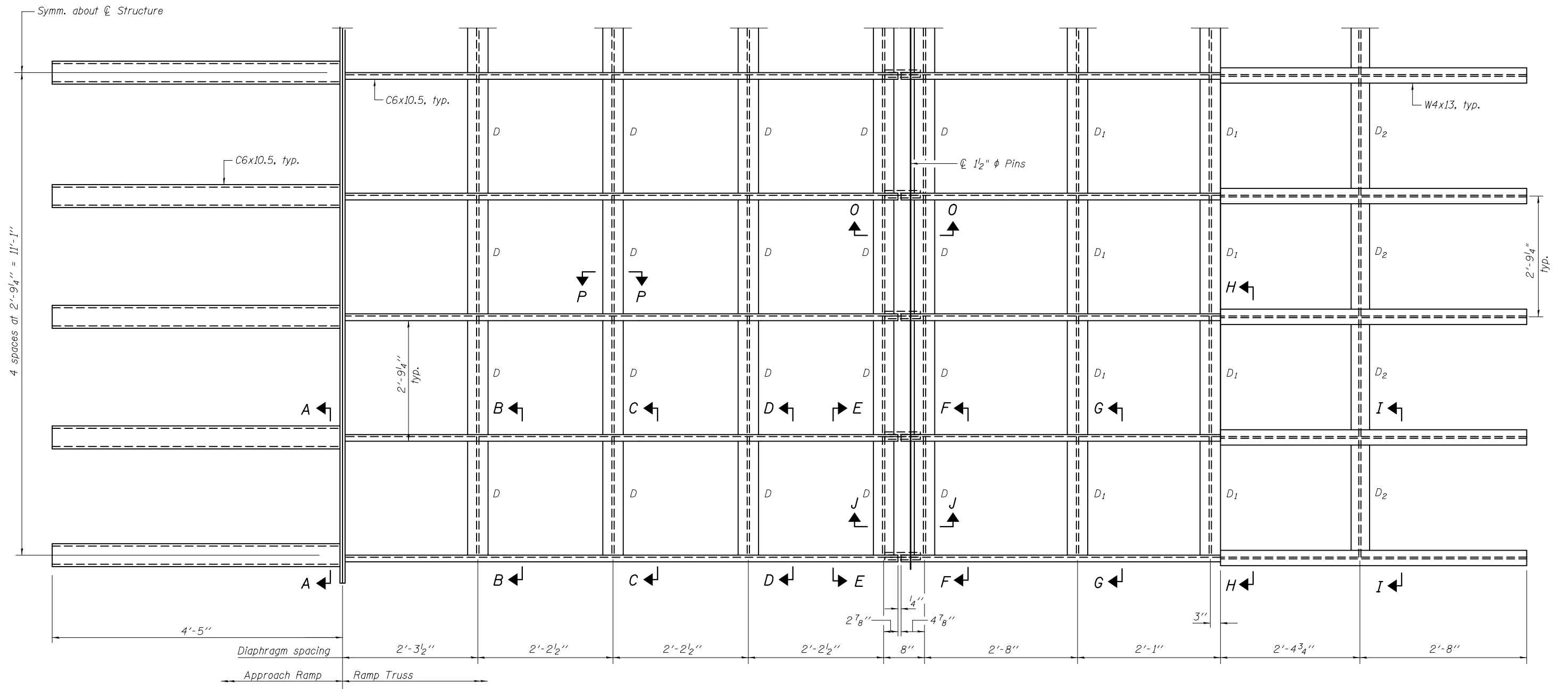
STATE OF ILLINOIS
DEPARTMENT OF TRANSPORTATION

PLATE DETAILS
(BRUSSELS AND KAMPSVILLE FERRY)

SHEET NO. 3 OF 11 SHEETS

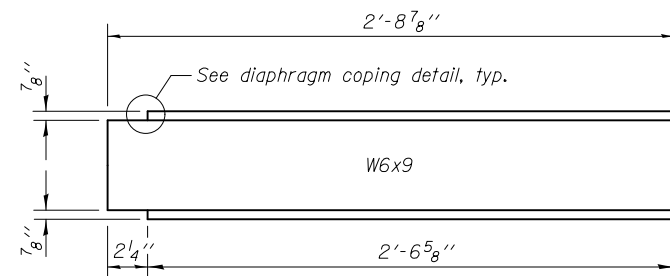
• 761/304
• GREENE AND JERSEY

F.A.P. RTE.	SECTION	COUNTY	TOTAL SHEETS	SHEET NO.
•	1011-7 & 1191-3	••	15	7
CONTRACT NO. 76L55			ILLINOIS FED. AID PROJECT	

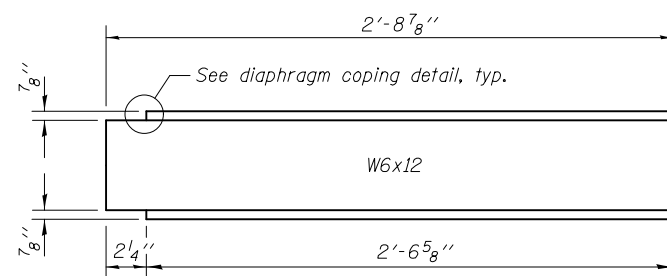


FRAMING PLAN

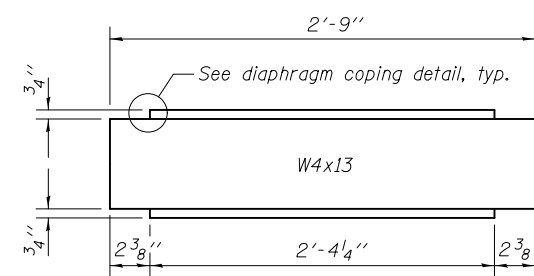
(Showing top of framing plan)
(Bump Plates not shown for clarity, see sheet 7 of 11)



DIAPHRAGM D
(40 required)



DIAPHRAGM D1
(16 required)



DIAPHRAGM D2
(8 required)

Notes: See sheets 6 & 7 of 11 for Sections A-A thru J-J.
See sheet 10 of 11 for Section O-O and Section P-P.
See sheet 11 of 11 for diaphragm coping detail.

DESIGNED - DAVID RICHTER
CHECKED - PAUL GURKLYS
DRAWN - TIM CARNEY
CHECKED - DHR/PG/GRA

EXAMINED
PASSED

Jaime F. J. [Signature]
ENGINEER OF BRIDGE DESIGN
Carl [Signature]
ENGINEER OF BRIDGES AND STRUCTURES

DATE - AUGUST 21, 2018

STATE OF ILLINOIS
DEPARTMENT OF TRANSPORTATION

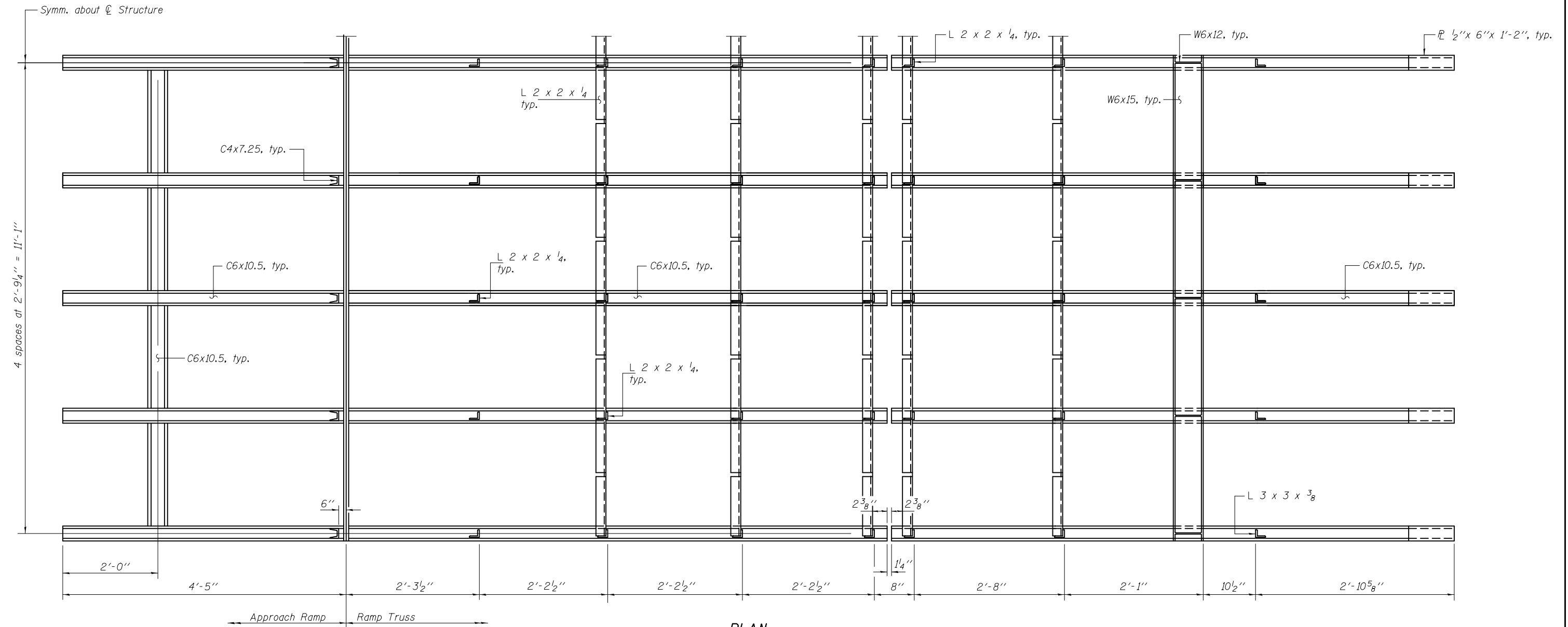
STRUCTURAL STEEL
(BRUSSELS AND KAMPSVILLE FERRY)

SHEET NO. 4 OF 11 SHEETS

• 761/304
• GREENE AND JERSEY

F.A.P. RTE.	SECTION	COUNTY	TOTAL SHEETS	SHEET NO.
•	1011-7 & 1191-3	••	15	8
CONTRACT NO. 76L55				

ILLINOIS FED. AID PROJECT



PLAN

(Showing bottom of framing plan)

DESIGNED - DAVID RICHTER
 CHECKED - PAUL GURKLYS
 DRAWN - TIM CARNEY
 CHECKED - DHR/PG/GRA

EXAMINED
 PASSED

Jaime F. J. [Signature]
 ENGINEER OF BRIDGE DESIGN
Carl [Signature]
 ENGINEER OF BRIDGES AND STRUCTURES

DATE - AUGUST 21, 2018

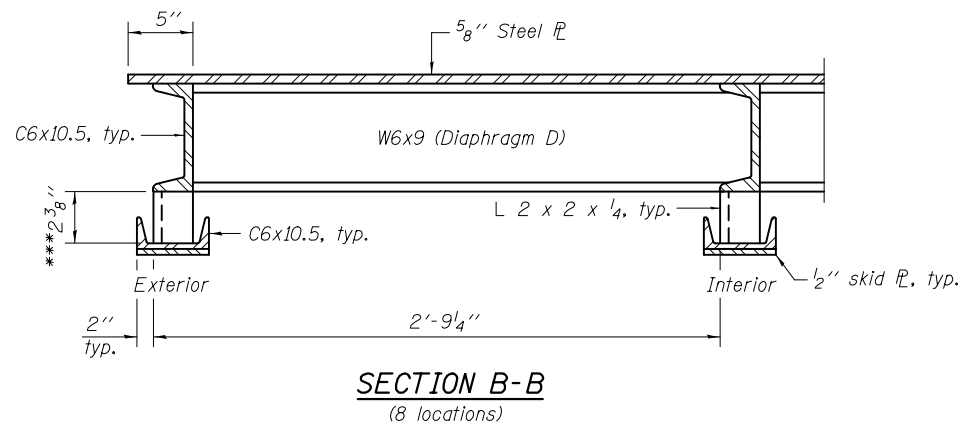
**STATE OF ILLINOIS
 DEPARTMENT OF TRANSPORTATION**

**FRAMING PLAN
 (BRUSSELS AND KAMPSVILLE FERRY)**

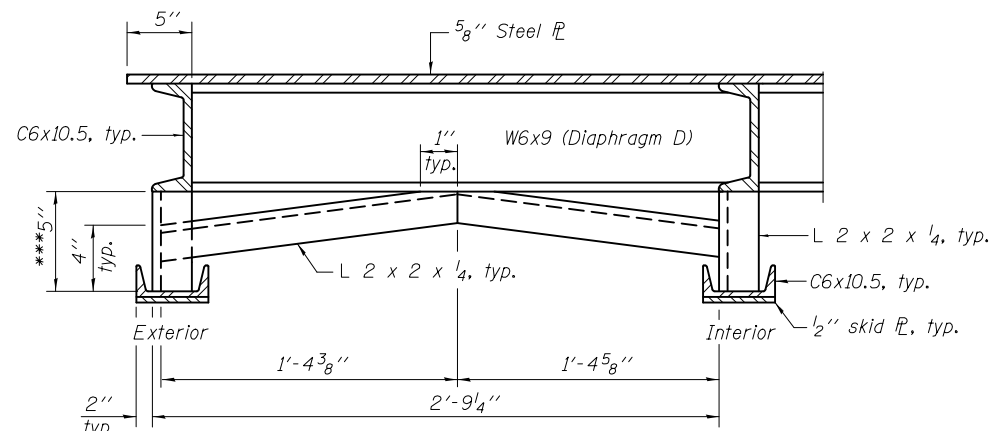
SHEET NO. 5 OF 11 SHEETS

• 761/304
 • GREENE AND JERSEY

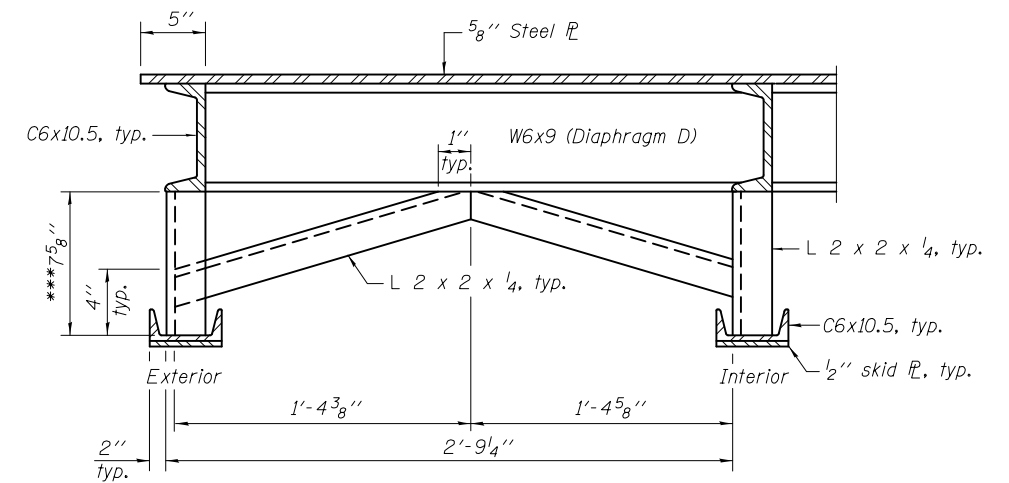
F.A.P. RTE.	SECTION	COUNTY	TOTAL SHEETS	SHEET NO.
•	1011-7 & 1191-3	••	15	9
CONTRACT NO. 76L55			ILLINOIS FED. AID PROJECT	



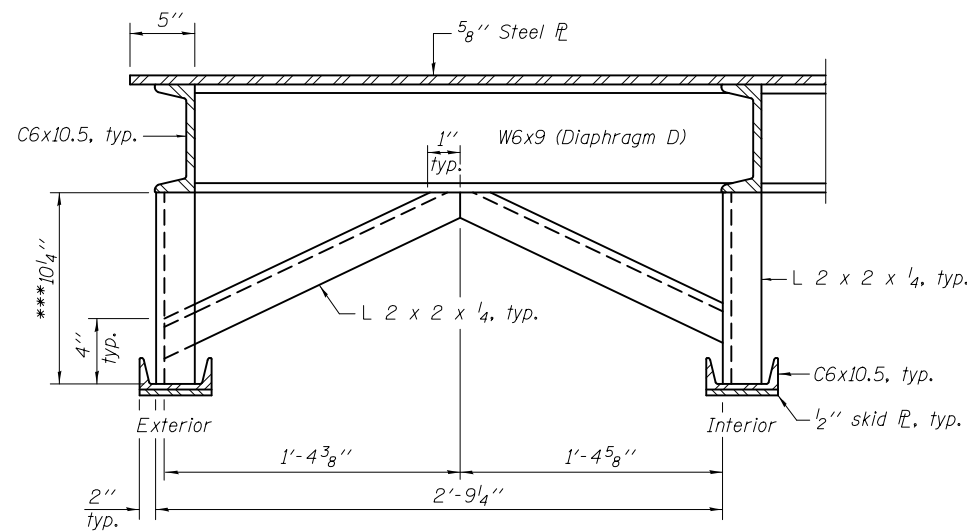
SECTION B-B
(8 locations)



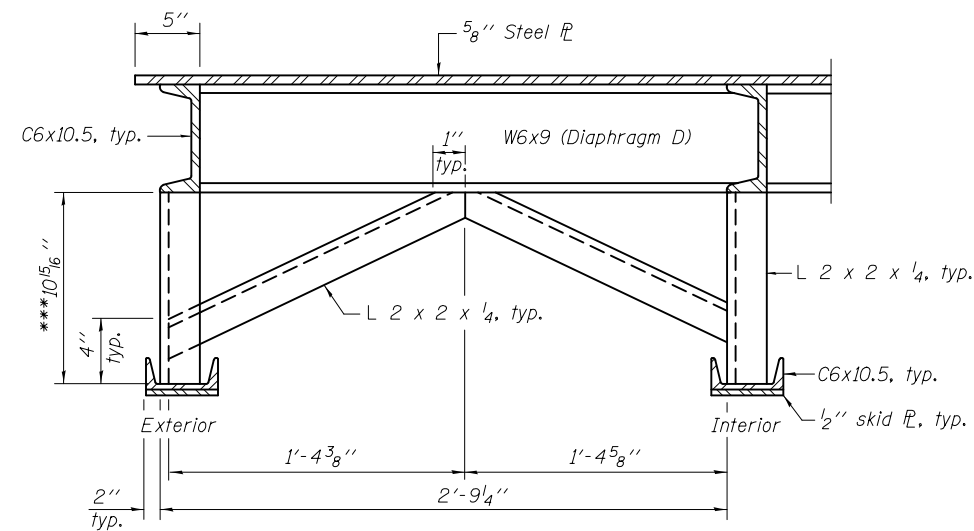
SECTION C-C
(8 locations)



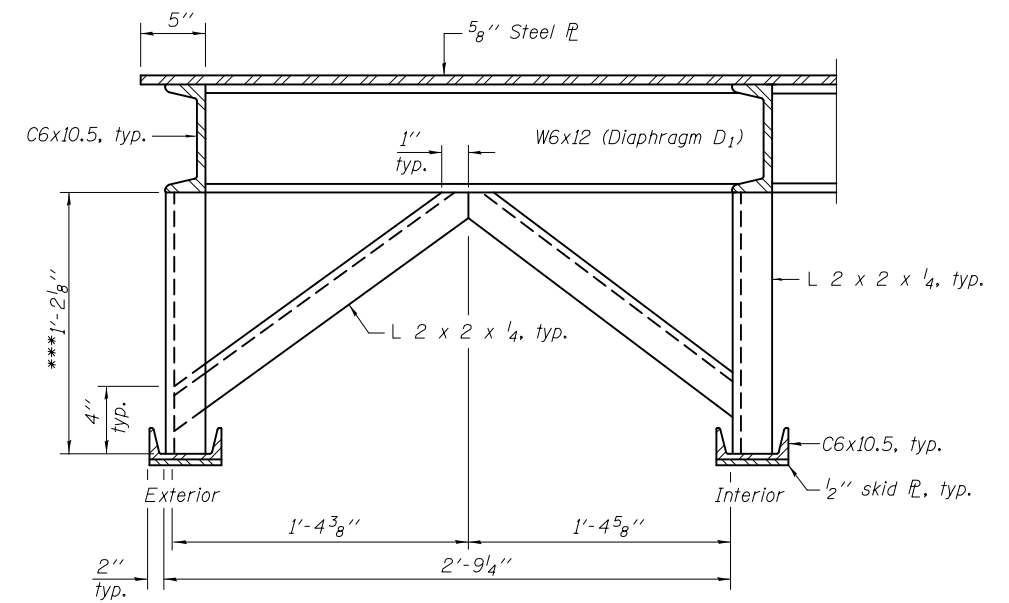
SECTION D-D
(8 locations)



SECTION E-E
(8 locations)

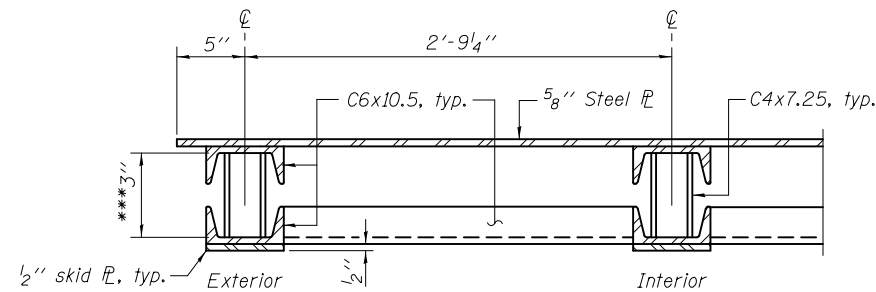


SECTION F-F
(8 locations)



SECTION G-G
(8 locations)

*** Measured at ϕ of diaphragm.



SECTION A-A
(8 locations)

DESIGNED - DAVID RICHTER
CHECKED - PAUL GURKLYS
DRAWN - TIM CARNEY
CHECKED - DHR/PG/GRA

EXAMINED
PASSED

 ENGINEER OF BRIDGES AND STRUCTURES

DATE - AUGUST 21, 2018

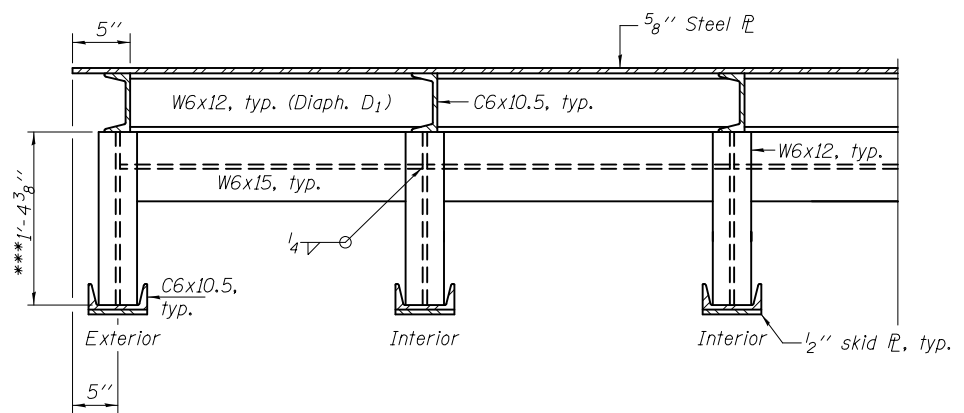
STATE OF ILLINOIS
DEPARTMENT OF TRANSPORTATION

CROSS FRAME DETAILS
(BRUSSELS AND KAMPSVILLE FERRY)

SHEET NO. 6 OF 11 SHEETS

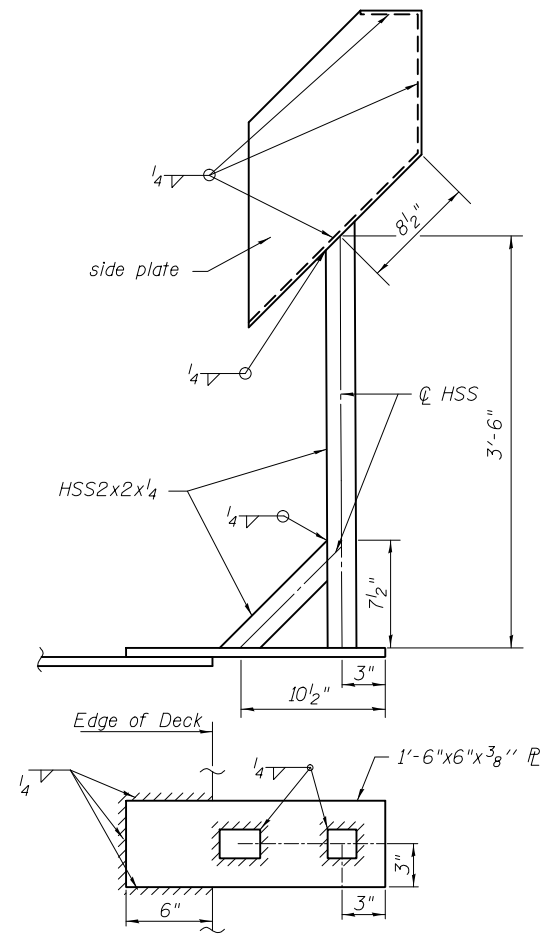
• 761/304
• GREENE AND JERSEY

F.A.P. RTE.	SECTION	COUNTY	TOTAL SHEETS	SHEET NO.
•	1011-7 & 1191-3	••	15	10
CONTRACT NO. 76L55			ILLINOIS FED. AID PROJECT	



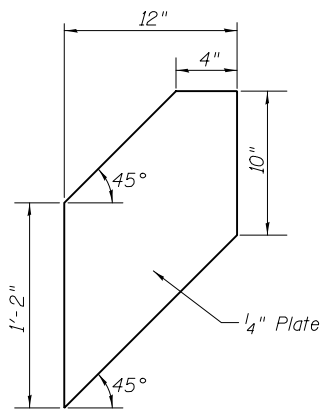
SECTION H-H

*** Measured at C of diaphragm.

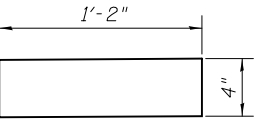


USGS NOTATION BOX

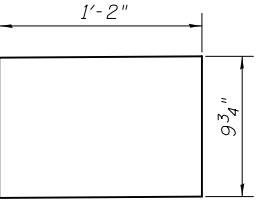
A clear, weatherproof polyurethane cover shall be provided and attached to the top plate of the USGS Notation Box by a hinge connector. Cost shall be included with "Steel Docks".



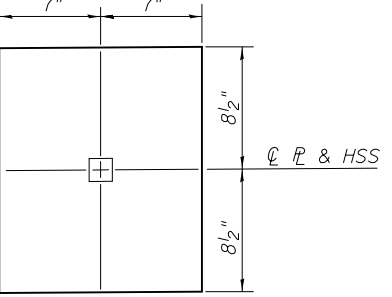
SIDE PLATE
(2 required)



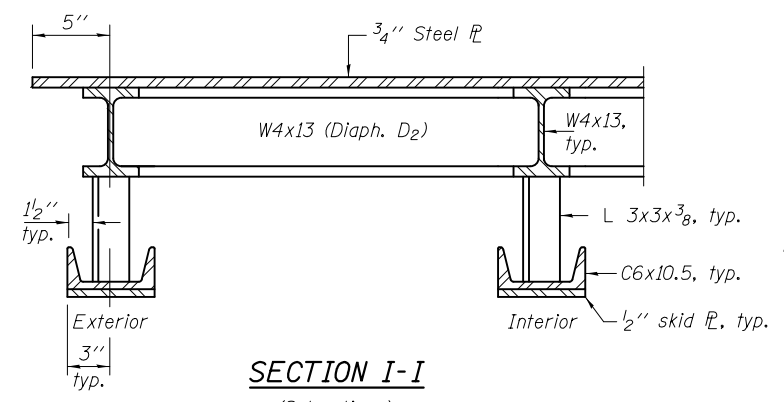
TOP PLATE
(1 required)



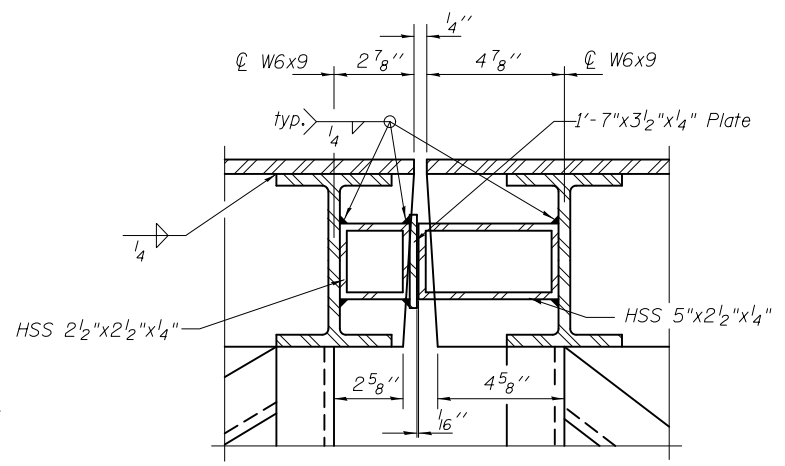
BACK PLATE
(1 required)



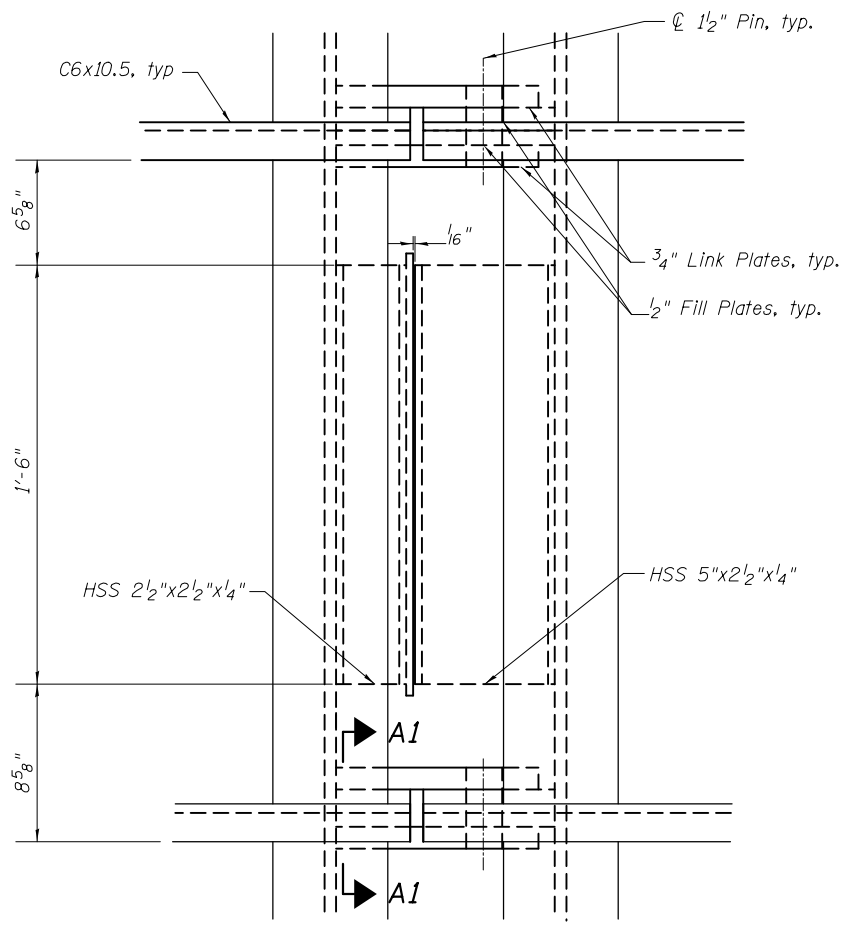
BOTTOM PLATE
(1 required)



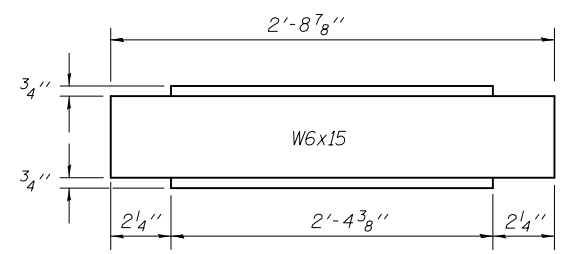
SECTION I-I
(8 locations)



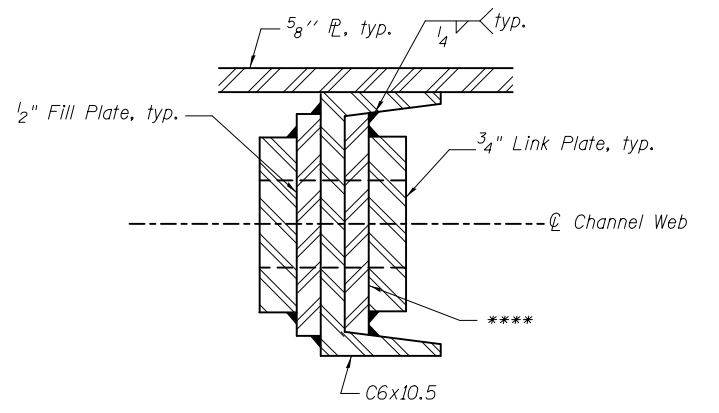
SECTION J-J



BUMP PLATE DETAIL
(Top Plates not shown for clarity)



W6x15
(8 required)



SECTION A1-A1

Notes: See sheet 10 of 11 for Fill Plate and Link Plate Details

**** Grind width of plate to fit inside C6x10.5.

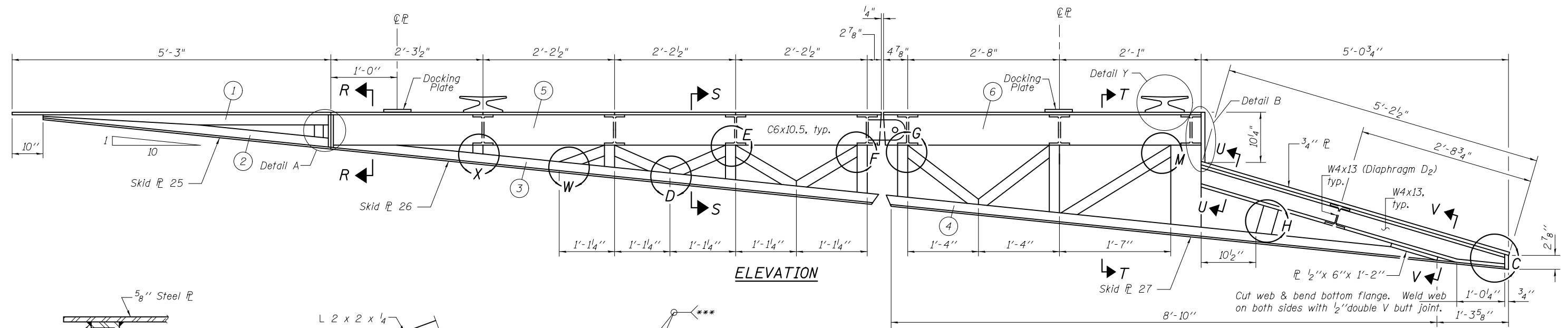
DESIGNED - DAVID RICHTER	EXAMINED - <i>Jaime F. J. [Signature]</i>	DATE - AUGUST 21, 2018
CHECKED - PAUL GURKLYS	PASSED - <i>Carl [Signature]</i>	
DRAWN - TIM CARNEY	ENGINEER OF BRIDGES AND STRUCTURES	
CHECKED - DHR/PG/GRA		

STATE OF ILLINOIS
DEPARTMENT OF TRANSPORTATION

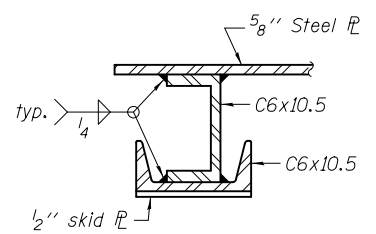
CROSS FRAME DETAILS
(BRUSSELS AND KAMPSVILLE FERRY)

SHEET NO. 7 OF 11 SHEETS

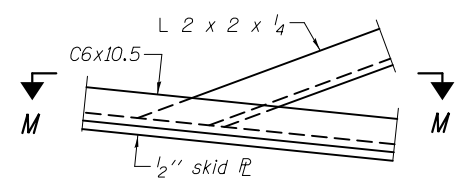
F.A.P. RTE.	SECTION	COUNTY	TOTAL SHEETS	SHEET NO.
	1011-7 & 1191-3	**	15	11
CONTRACT NO. 76L55			ILLINOIS FED. AID PROJECT	



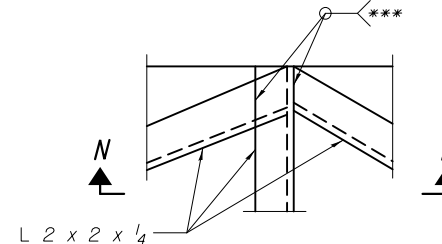
ELEVATION



SECTION R-R

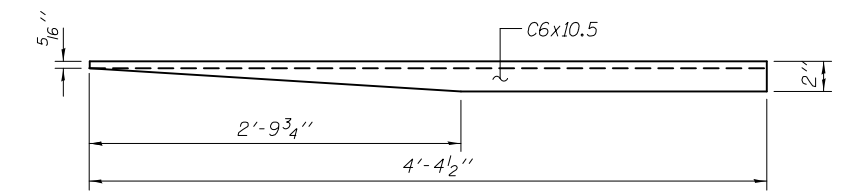


DETAIL W
(2 locations)

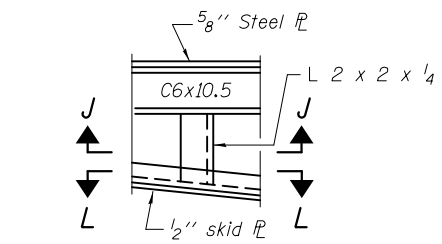


DETAIL E
(2 locations)

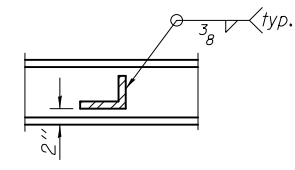
*** Weld is to be a 1/4" fillet, or 1/4" grooved as required



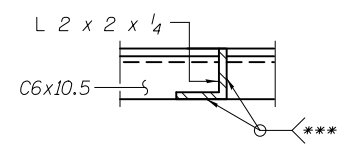
MEMBER 1
(9 required)



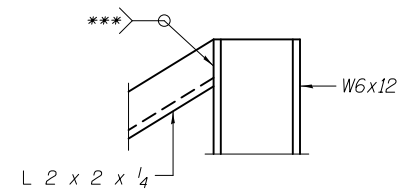
DETAIL X



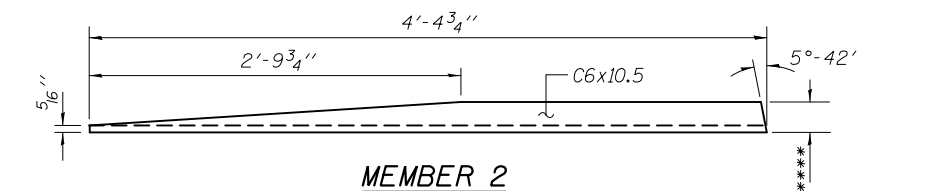
SECTION M-M



SECTION N-N

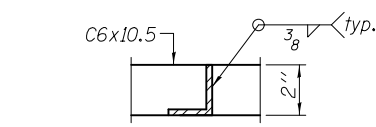


DETAIL M

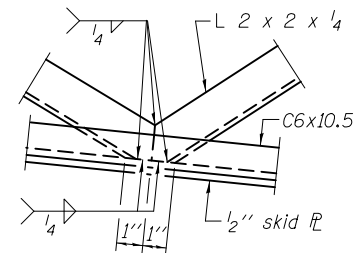


MEMBER 2
(9 required)

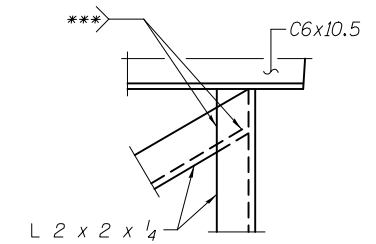
**** Grind down flanges of channel C6x15 to fit.



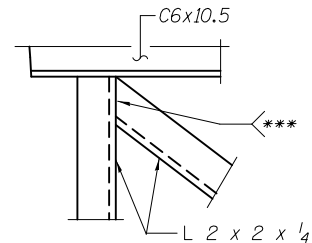
SECTION J-J
(1 location)



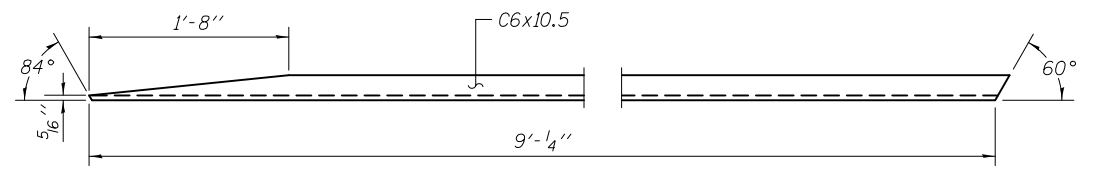
DETAIL D
(3 locations)



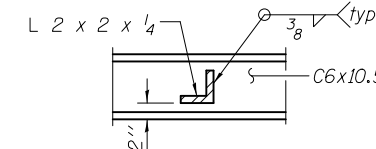
DETAIL F
(2 locations)



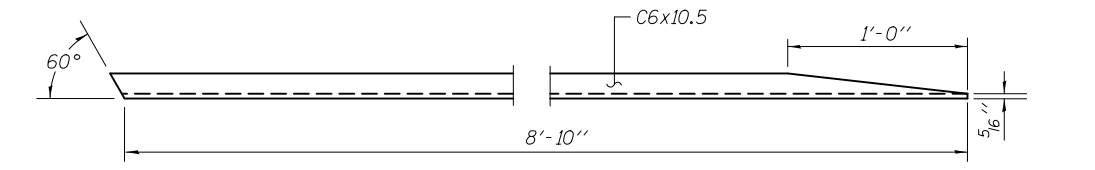
DETAIL G
(1 location)



MEMBER 3
(9 required)



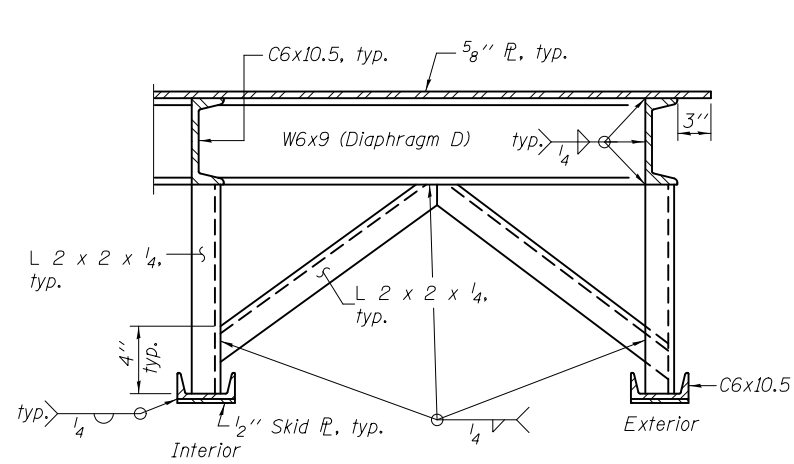
SECTION L-L
(6 locations)



MEMBER 4
(9 required)

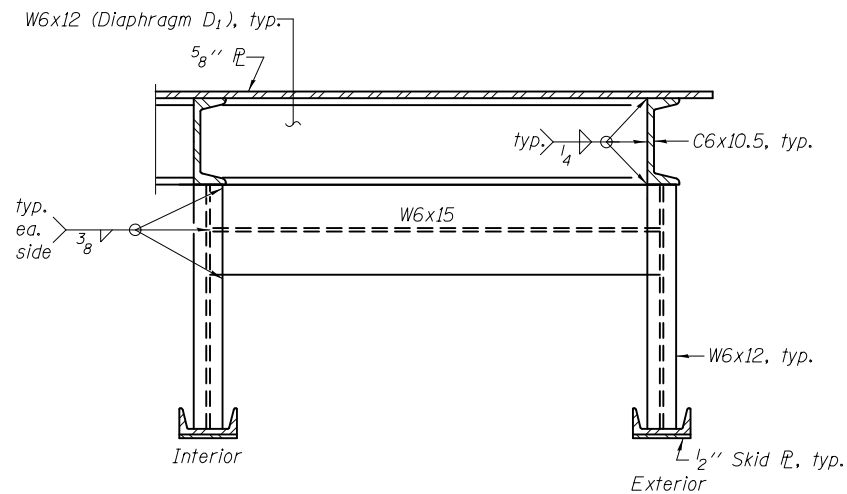
Notes: See sheet 9 of 11 for Sections S-S, T-T, U-U, V-V and Details C, H & Y.
See sheet 10 of 11 for members 5 and 6.
For Details A, B, and C, see sheet 2 of 11.
See Sheet 3 of 11 for skid plates 25, 26 and 27.

DESIGNED - DAVID RICHTER	EXAMINED - <i>James F. J. [Signature]</i>	DATE - AUGUST 21, 2018	STATE OF ILLINOIS DEPARTMENT OF TRANSPORTATION		STRUCTURAL STEEL MEMBERS (BRUSSELS AND KAMPSVILLE FERRY)		• 761/304		TOTAL SHEETS	SHEET NO.
CHECKED - PAUL GURKLYS	PASSED - <i>Carl [Signature]</i>						• GREENE AND JERSEY			
DRAWN - TIM CARNEY			SHEET NO. 8 OF 11 SHEETS		CONTRACT NO. 76L55		ILLINOIS FED. AID PROJECT			
CHECKED - DHR/PG/GRA							F.A.P. RTE.		1011-7 & 1191-3	



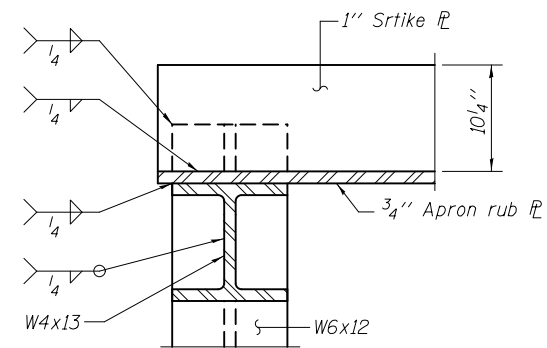
SECTION S-S

Typical welding diagram at each diaphragm and diaphragm bracing.

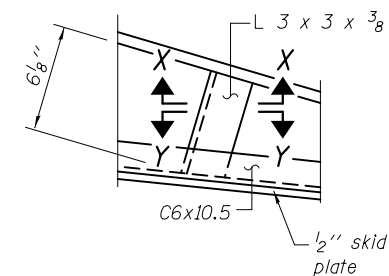


SECTION T-T

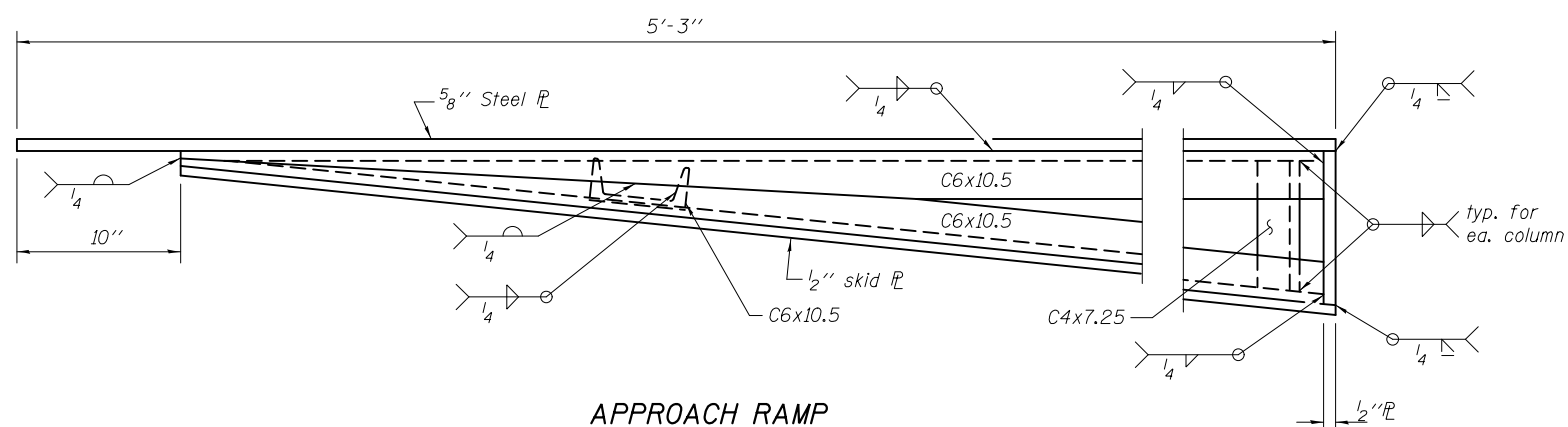
Typical welding diagram at each end diaphragm.



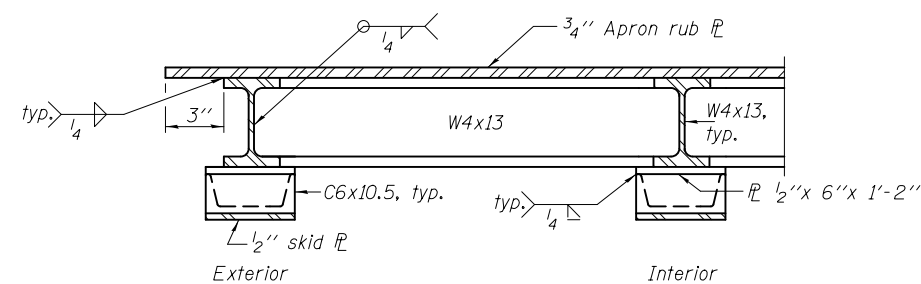
SECTION U-U



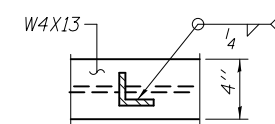
DETAIL H



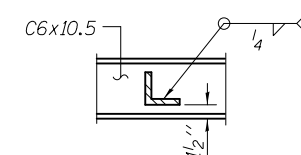
APPROACH RAMP



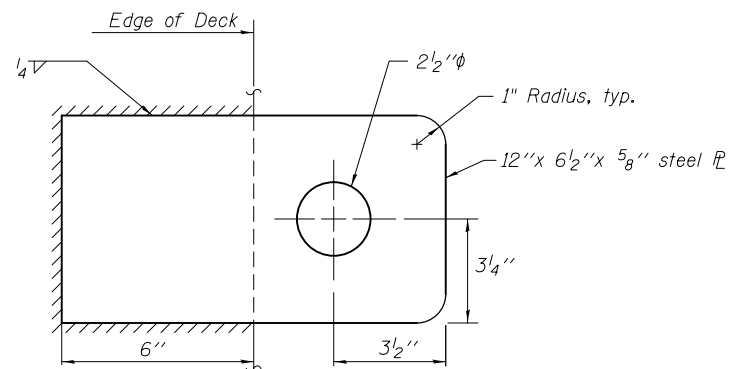
SECTION V-V
(8 locations)



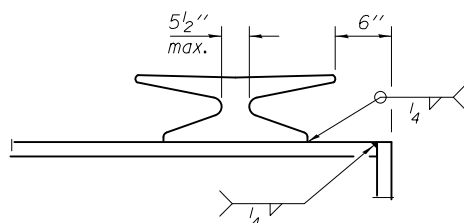
SECTION X-X



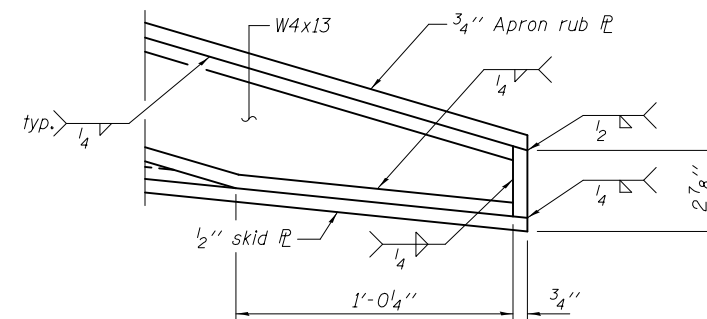
SECTION Y-Y



DOCKING PLATE



DETAIL Y



DETAIL C
(Showing welds)

DESIGNED - DAVID RICHTER
 CHECKED - PAUL GURKLYS
 DRAWN - TIM CARNEY
 CHECKED - DHR/PG/GRA

EXAMINED
 PASSED

James F. J. [Signature]
 ENGINEER OF BRIDGE DESIGN
Carl [Signature]
 ENGINEER OF BRIDGES AND STRUCTURES

DATE - AUGUST 21, 2018

STATE OF ILLINOIS
DEPARTMENT OF TRANSPORTATION

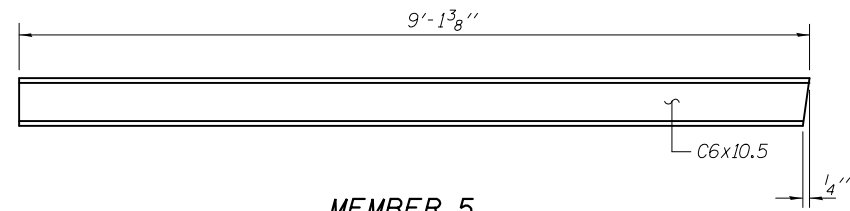
WELD DETAILS
(BRUSSELS AND KAMPSVILLE FERRY)

SHEET NO. 9 OF 11 SHEETS

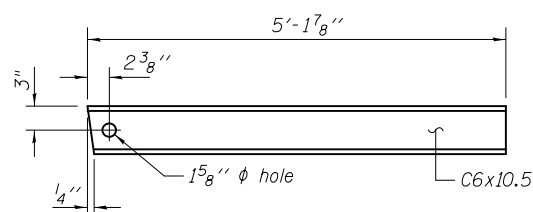
• 761/304
 •• GREENE AND JERSEY

F.A.P. RTE.	SECTION	COUNTY	TOTAL SHEETS	SHEET NO.
•	1011-7 & 1191-3	••	15	13
CONTRACT NO. 76L55				

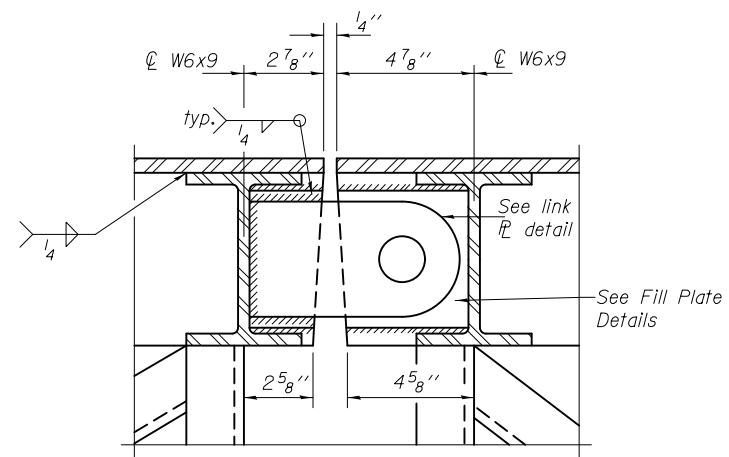
ILLINOIS FED. AID PROJECT



MEMBER 5
(9 required)

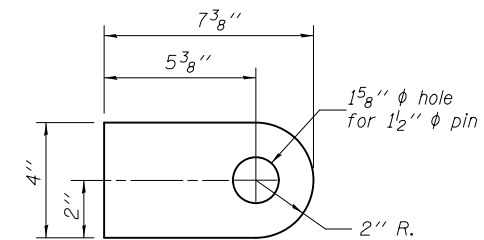


MEMBER 6
(9 required)



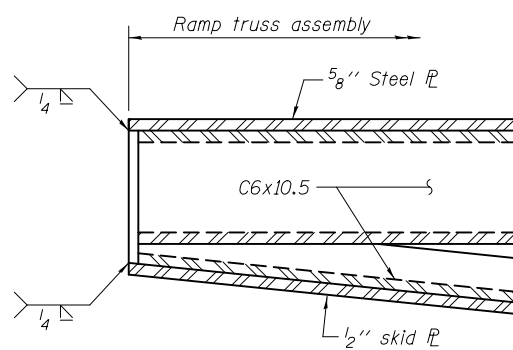
SECTION O-O

(Link PL and Fill PL on both sides of channel web)

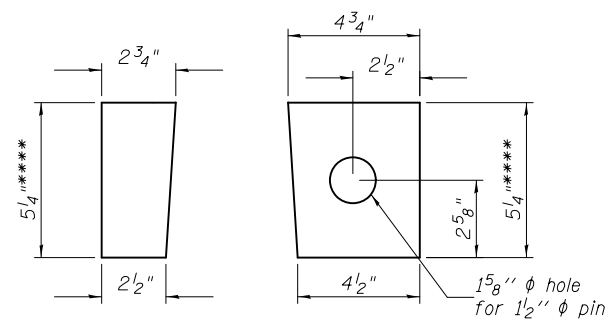


LINK PLATE DETAIL

3/4" Steel PL
(18 required)



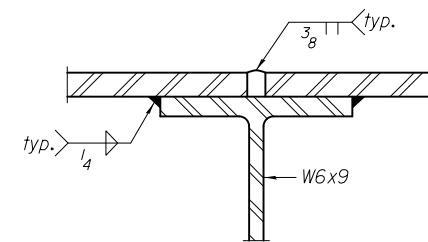
DETAIL A
(Showing welds)



FILL PLATE DETAILS

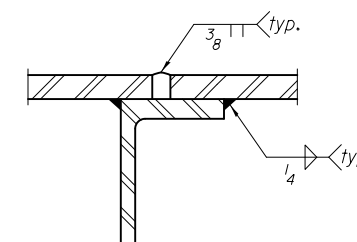
1/2" Steel PL
(18 required - each)

**** Grind width of plate to fit inside C6x10.5.



SECTION P-P

(C6 not shown for clarity)



SECTION Q-Q

Notes: See sheet 2 of 11 for location of Section Q-Q.
See sheet 4 of 11 for location of Sections O-O,
& P-P.

DESIGNED - DAVID RICHTER
CHECKED - PAUL GURKLYS
DRAWN - TIM CARNEY
CHECKED - DHR/PG/GRA

EXAMINED _____
PASSED _____
Jaime F. J. [Signature]
ENGINEER OF BRIDGES AND STRUCTURES

DATE - AUGUST 21, 2018

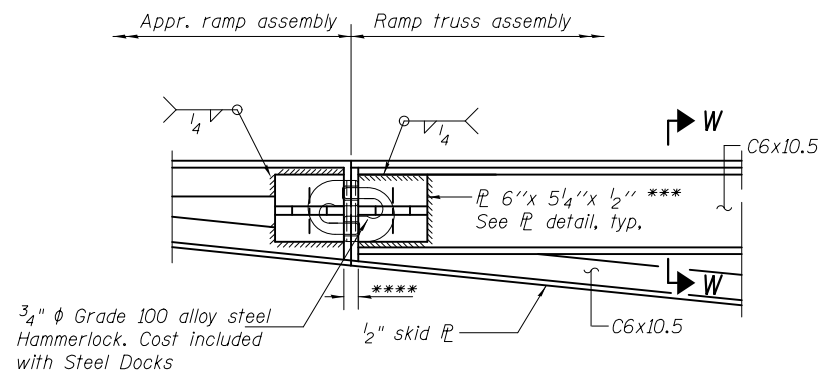
STATE OF ILLINOIS
DEPARTMENT OF TRANSPORTATION

WELD DETAILS
(BRUSSELS AND KAMPSVILLE FERRY)

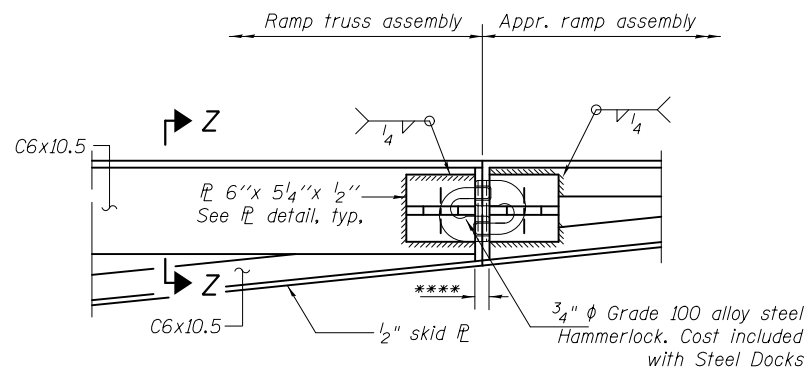
SHEET NO. 10 OF 11 SHEETS

• 761/304
• GREENE AND JERSEY

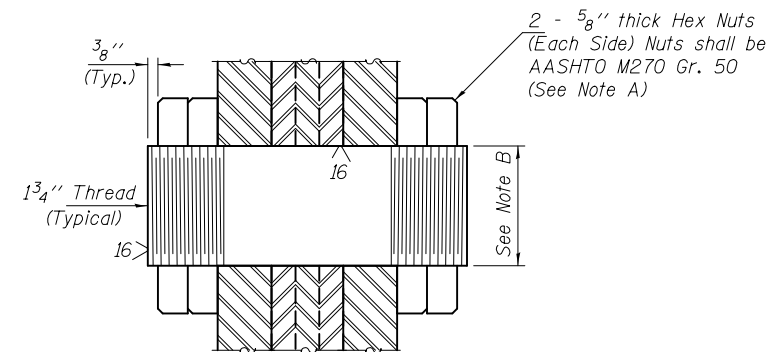
F.A.P. RTE.	SECTION	COUNTY	TOTAL SHEETS	SHEET NO.
•	1011-7 & 1191-3	••	15	14
			CONTRACT NO. 76L55	
ILLINOIS FED. AID PROJECT				



TIE DETAIL
(1 location)



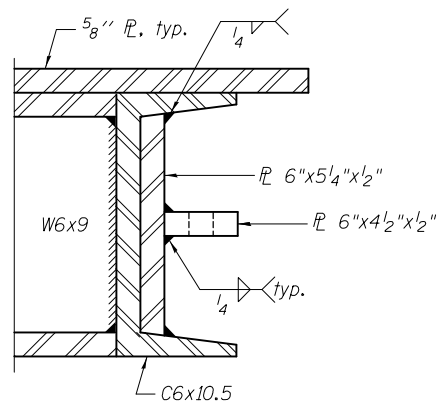
TIE DETAIL
(1 location)



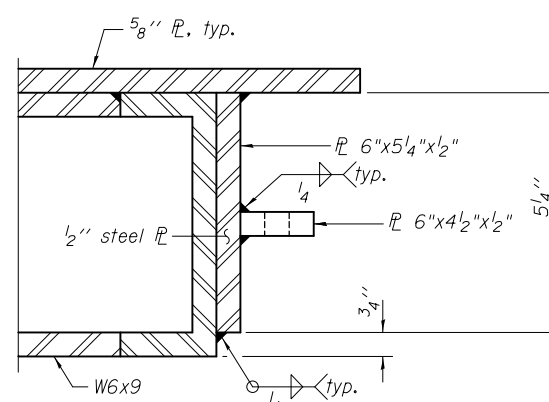
1/2" ϕ THREADED CONNECTION PIN
(9 required)

Note A:
Tighten inside nuts to bring plates into firm contact, then back off 1/4 turn and tighten outer nuts.

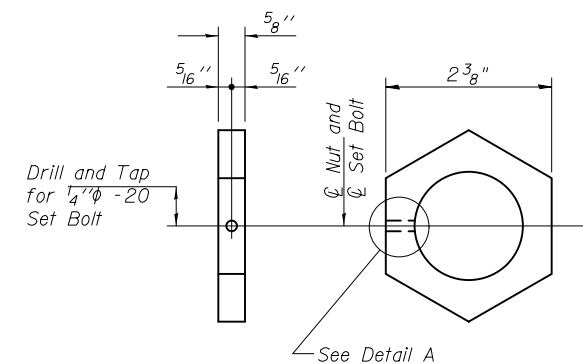
Note B:
Nominal Pin diameter. Pin shall be ASTM A276, UNS 21800 (Nitronic 60 or equal) (No step at threads) 12 threads per inch.



SECTION W-W
See Section B-B for dimensions



SECTION Z-Z



EXTERIOR NUT DETAIL

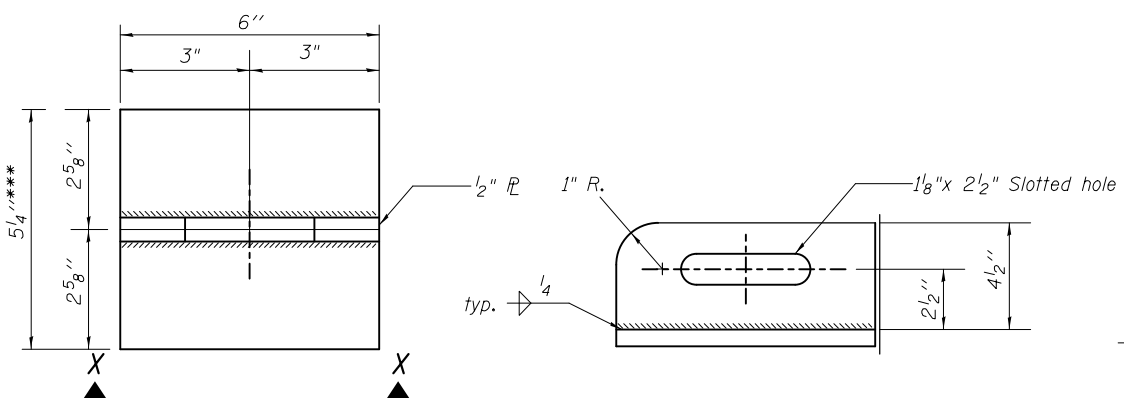
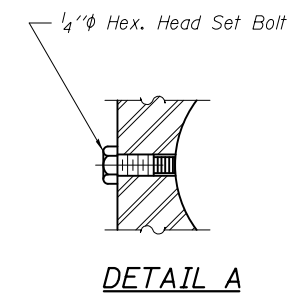


PLATE DETAIL
1/2" plate
(4 required)

SECTION X-X

COPING DETAIL FOR DIAPHRAGMS D, D₁, & D₂
Do not gouge web when cutting flange.

COPING DETAIL FOR W6X15
Do not gouge web when cutting flange.



DETAIL A
Set Bolts shall conform to the requirements of ASTM A 307.

*** Grind width of plate to fit inside C6x10.5

**** For Hammerlock installation, provide the necessary gap dimension between 6"x5 1/4"x1/2" plates on ramp truss and approach ramp.

DESIGNED - DAVID RICHTER
CHECKED - PAUL GURKLYS
DRAWN - TIM CARNEY
CHECKED - DHR/PG/GRA

EXAMINED
PASSED

Jaime F. J. [Signature]
ENGINEER OF BRIDGES AND STRUCTURES

DATE - AUGUST 21, 2018

STATE OF ILLINOIS
DEPARTMENT OF TRANSPORTATION

HINGE & TIE DETAILS
(BRUSSELS AND KAMPSVILLE FERRY)

SHEET NO. 11 OF 11 SHEETS

• 761/304
• GREENE AND JERSEY

F.A.P. RTE.	SECTION	COUNTY	TOTAL SHEETS	SHEET NO.
•	1011-7 & 1191-3	••	15	15
CONTRACT NO. 76L55			ILLINOIS FED. AID PROJECT	