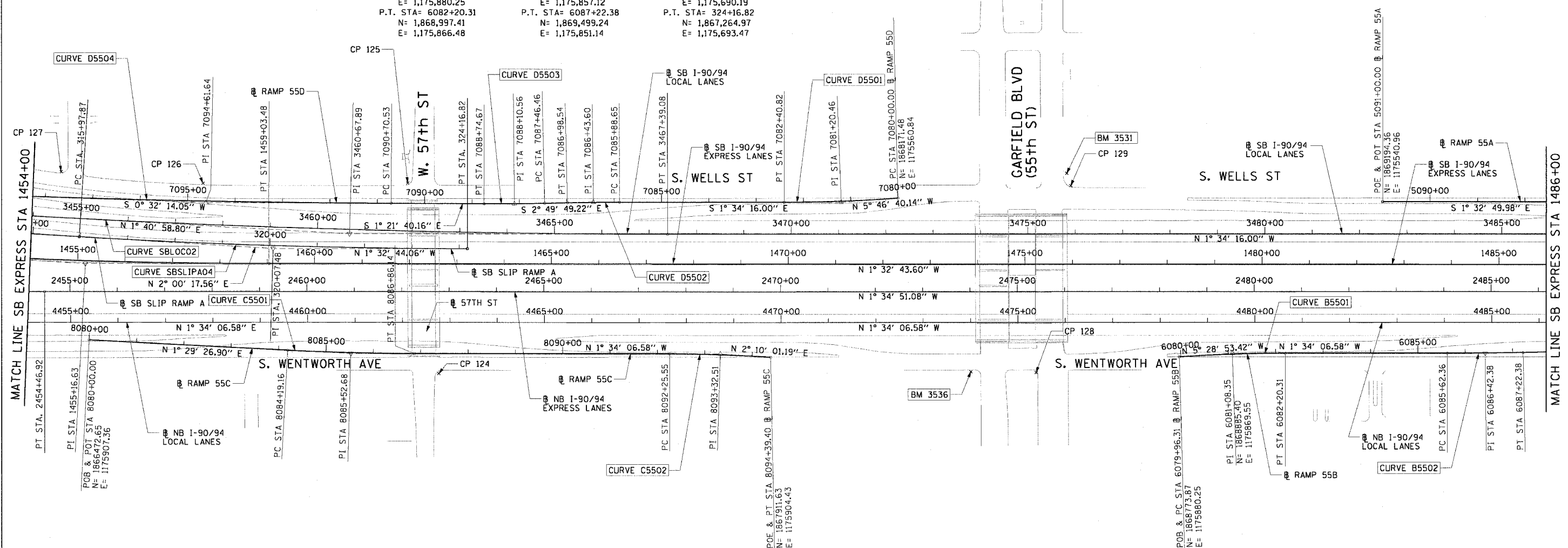


F.A.I. RTE.	SECTION	COUNTY	TOTAL SHEETS	SHEET NO.
90/94		COOK	312	28
STA. TO STA.				
FED. ROAD DIST. NO. 1 ILLINOIS FED. AID PROJECT				
60A62 • (1919.15, 2021-922 PT1 & PT2) R-1				



CURVE B5501 P.I. STA= 6081+08.35 N= 1,868,885.40 E= 1,175,869.55 Δ = 3° 54' 47" D= 1° 44' 49" R= 3280.00' T= 112.05' L= 224.01' E= 1.91' e= N/A T.R.= N/A S.E. RUN= N/A P.C. STA= 6079+96.31 N= 1,868,773.87 E= 1,175,880.25 P.T. STA= 6082+20.31 N= 1,868,997.41 E= 1,175,866.48	CURVE B5502 P.I. STA= 6086+42.38 N= 1,869,419.31 E= 1,175,854.93 Δ = 1° 08' 45" D= 0° 42' 58" R= 8002.00 T= 80.01' L= 160.02' E= 0.40' e= N/A T.R.= N/A S.E. RUN= N/A P.C. STA= 6085+62.36 N= 1,869,339.33 E= 1,175,857.12 P.T. STA= 6087+22.38 N= 1,869,499.24 E= 1,175,851.14	CURVE SBSLIPA04 P.I. STA= 320+07.48 N= 1,866,855.51 E= 1,175,704.52 Δ = 3° 33' 02" D= 0° 26' 01" R= 13216.00 T= 409.61' L= 818.96' E= 6.35' e= N/A T.R.= N/A S.E. RUN= N/A P.C. STA= 315+97.87 N= 1,866,446.15 E= 1,175,690.19 P.T. STA= 324+16.82 N= 1,867,264.97 E= 1,175,693.47
---	---	--



CURVE SBLOC02 P.I. STA= 3460+67.89 N= 1,867,015.66 E= 1,175,668.66 Δ = 3° 15' 15" D= 0° 14' 32" R= 23642.00' T= 671.55' L= 1342.75' E= 9.54' e= NC T.R.= N/A S.E. RUN= N/A P.C. STA= 3453+96.33 N= 1,866,344.40 E= 1,175,648.93 P.T. STA= 3467+39.08 N= 1,867,686.96 E= 1,175,650.24	CURVE C5501 P.I. STA= 8085+52.68 N= 1,867,025.15 E= 1,175,921.74 Δ = 3° 03' 33" D= 1° 08' 45" R= 5000.00' T= 133.52' L= 266.97' E= 1.78' e= N/A T.R.= N/A S.E. RUN= N/A P.C. STA= 8084+19.16 N= 1,866,891.67 E= 1,175,918.26 P.T. STA= 8086+86.14 N= 1,867,158.61 E= 1,175,918.08	CURVE C5502 P.I. STA= 8093+32.51 N= 1,867,804.75 E= 1,175,900.39 Δ = 3° 44' 08" D= 1° 44' 49" R= 3280.00' T= 106.96' L= 213.84' E= 1.74' e= N/A T.R.= N/A S.E. RUN= N/A P.C. STA= 8092+25.55 N= 1,867,697.83 E= 1,175,903.32 P.T. STA= 8094+39.40 N= 1,867,911.63 E= 1,175,904.43	CURVE D5501 P.I. STA= 7081+20.46 N= 1,868,051.63 E= 1,175,572.97 Δ = 4° 12' 24" D= 1° 08' 45" R= 3280.00' T= 120.46' L= 240.82' E= 2.21' e= N/A T.R.= N/A S.E. RUN= N/A P.C. STA= 7080+00.00 N= 1,868,171.48 E= 1,175,560.84 P.T. STA= 7082+40.82 N= 1,867,931.21 E= 1,175,576.27	CURVE D5502 P.I. STA= 7086+43.60 N= 1,867,528.58 E= 1,175,587.31 Δ = 1° 15' 33" D= 1° 08' 45" R= 5000.00' T= 54.95' L= 109.89' E= 0.30' e= N/A T.R.= N/A S.E. RUN= N/A P.C. STA= 7085+88.65 N= 1,867,583.50 E= 1,175,585.81 P.T. STA= 7086+98.54 N= 1,867,297.72 E= 1,175,590.03	CURVE D5503 P.I. STA= 7088+10.56 N= 1,867,361.81 E= 1,175,595.56 Δ = 1° 28' 09" D= 1° 08' 45" R= 5000.00' T= 64.11' L= 128.21' E= 0.41' e= N/A T.R.= N/A S.E. RUN= N/A P.C. STA= 7087+46.46 N= 1,867,425.84 E= 1,175,592.39 P.T. STA= 7088+74.67 N= 1,867,297.72 E= 1,175,597.08	CURVE D5504 P.I. STA= 7094+61.64 N= 1,866,710.92 E= 1,175,611.02 Δ = 1° 53' 54" D= 0° 14' 34" R= 23606.00' T= 391.11' L= 782.14' E= 3.24' e= N/A T.R.= N/A S.E. RUN= N/A P.C. STA= 7090+70.53 N= 1,867,101.91 E= 1,175,601.73 P.T. STA= 7098+52.67 N= 1,866,319.83 E= 1,175,607.36
--	---	---	---	--	--	--

- NOTES:**
- AVERAGE GRID TO GROUND CONVERSION FACTOR = 1.000010988654360
 - FOR BENCH MARK INFORMATION, SEE SHEET 1 OF ALIGNMENT PLAN SHEETS.

REVISIONS	
NAME	DATE

ALT-5

ILLINOIS DEPARTMENT OF TRANSPORTATION
 F.A.I. 90/94 (DAN RYAN EXPRESSWAY)
 63RD STREET TO GARFIELD BLVD (NB LOCAL LANES)

ALIGNMENT PLAN

SCALE: 1"=100'
 DATE: June 9, 2006

DRAWN BY: NJH/AMM
 CHECKED BY: JAL/MS



P:\040460\CIVIL\90-chns-18 & 19-chns\150\align\mtr\60A62\002.dwg 9/13/06 9:43:48 AM