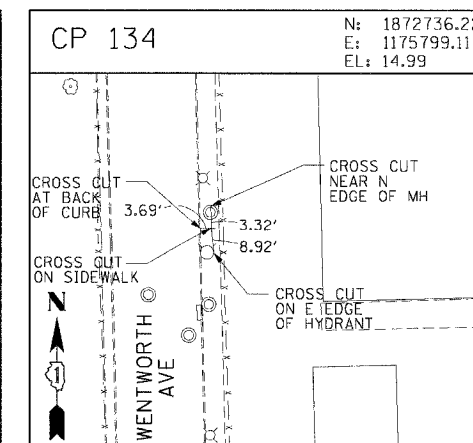
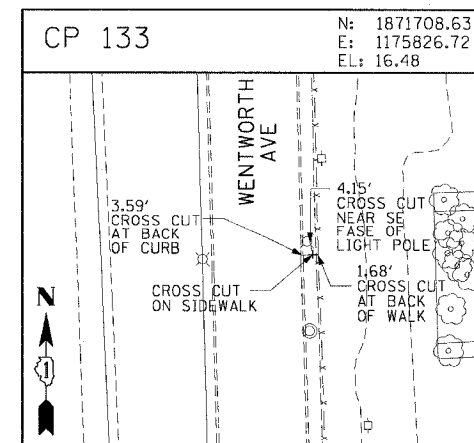
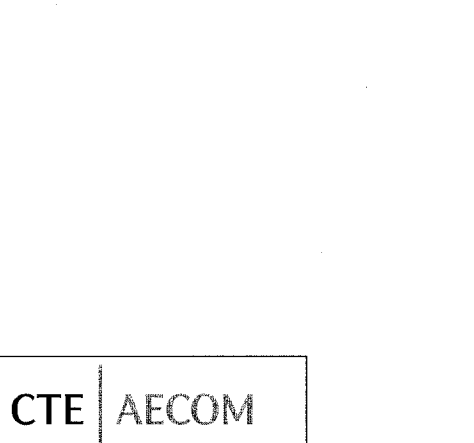
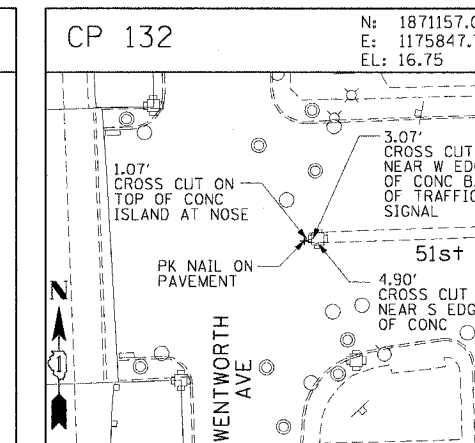
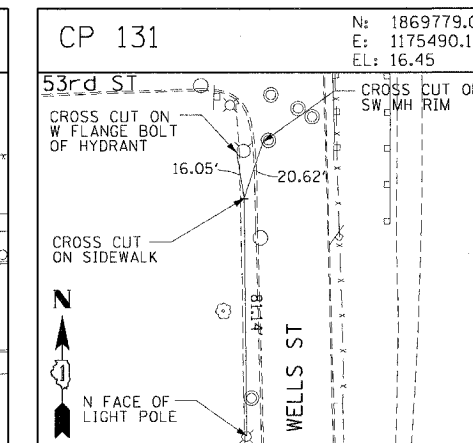
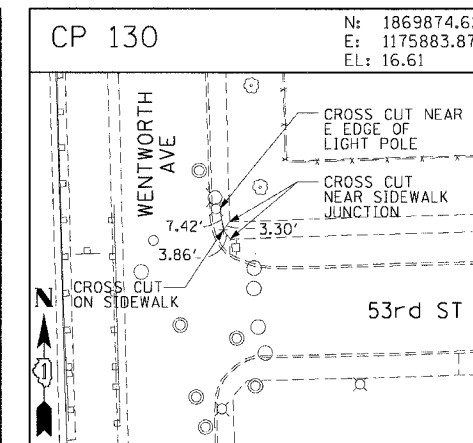
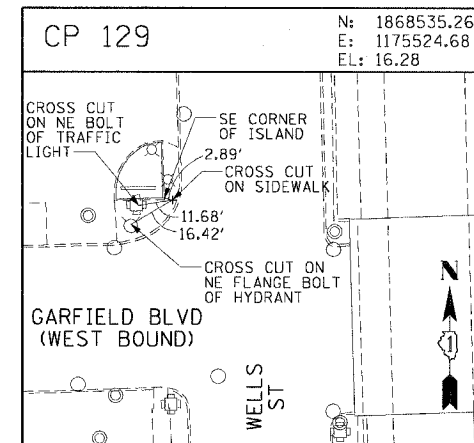
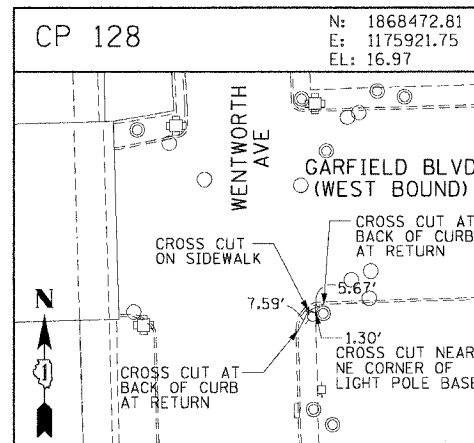
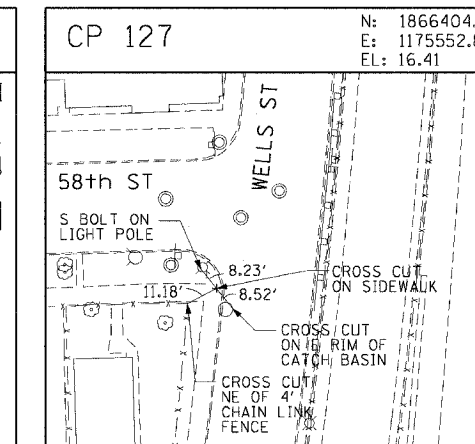
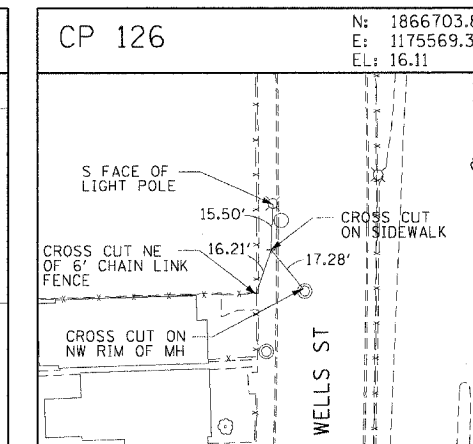
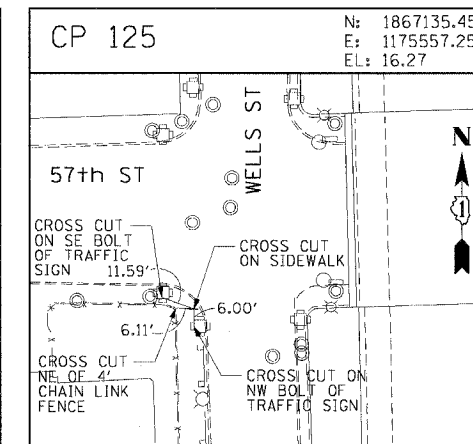
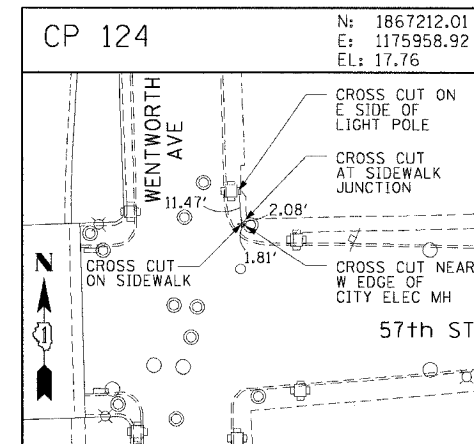
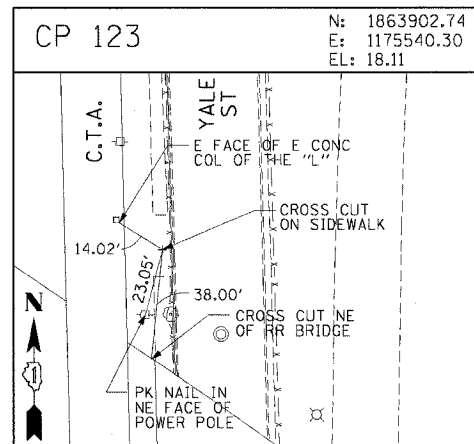
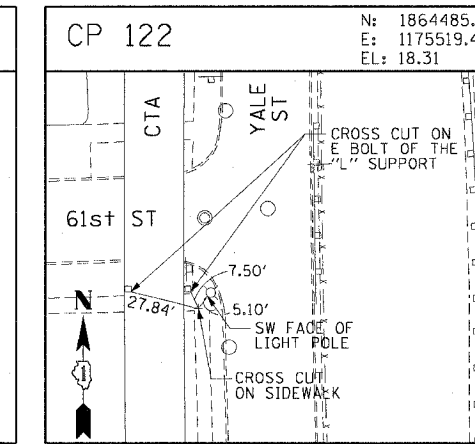
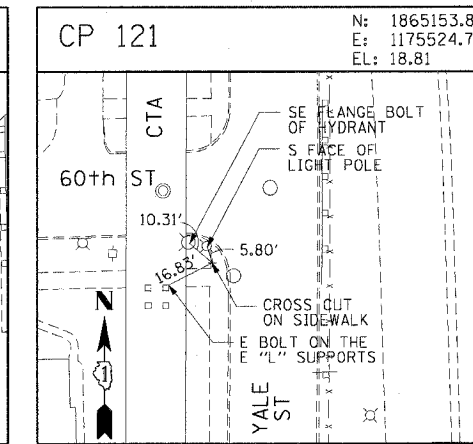
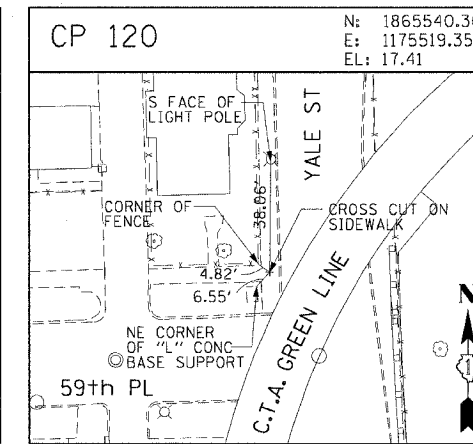
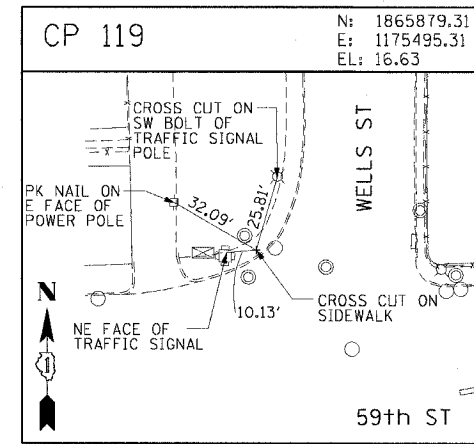
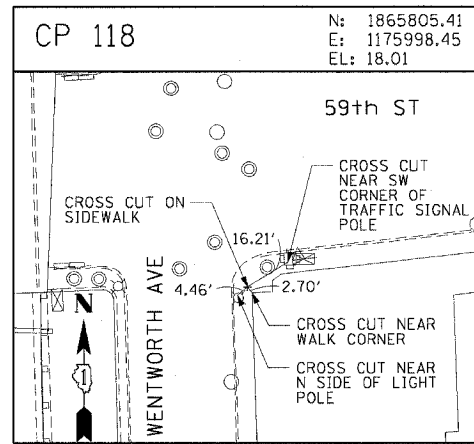


F.A.I. RTE.	SECTION	COUNTY	TOTAL SHEETS	SHEET NO.
90/94		COOK	312	32
STA.		TO STA.		
FED. ROAD DIST. NO. 1		ILLINOIS FED. AID PROJECT		
60A62		(1919.15, 2021-922 PT1 & PT2) R-1		



REVISIONS	
NAME	DATE

ALT-9
ILLINOIS DEPARTMENT OF TRANSPORTATION
F.A.I. 90/94 (DAN RYAN EXPRESSWAY)
63RD STREET TO GARFIELD BLVD (NB LOCAL LANES)
SURVEY TIES AND CONTROL POINTS
SCALE: 1"=30'
DATE: June 9, 2006
DRAWN BY: MRK
CHECKED BY: JAL

CTE | AECOM

6/5/2006 9:35:54 AM