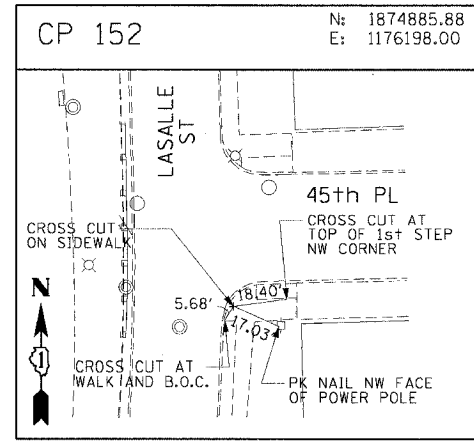
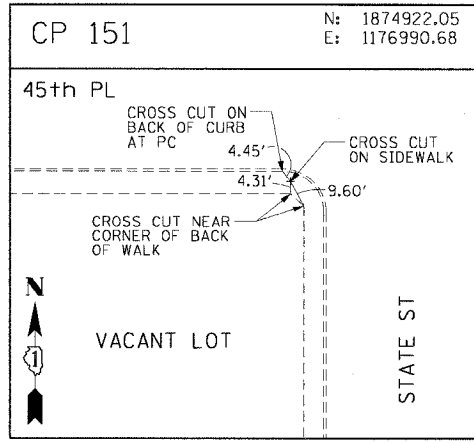
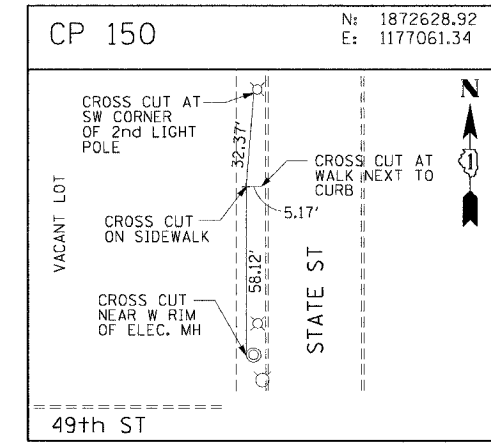
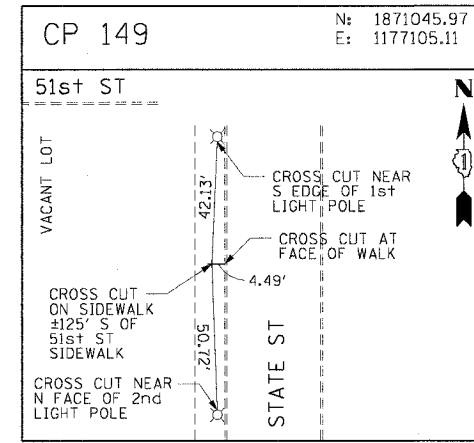
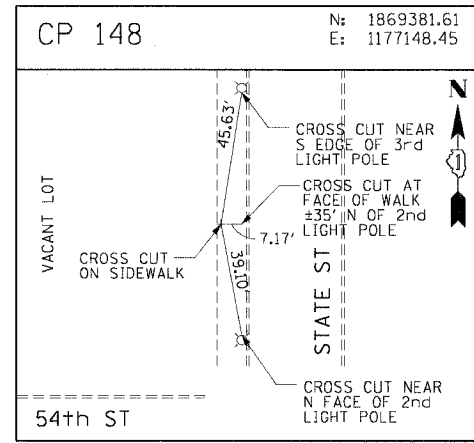
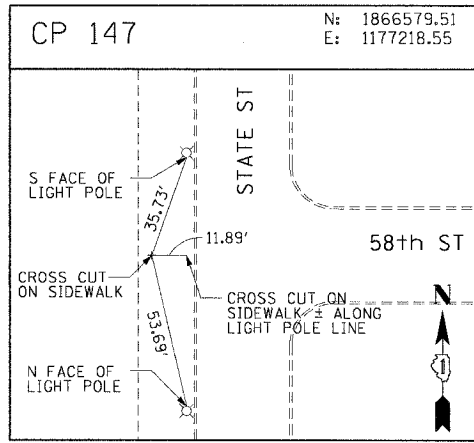
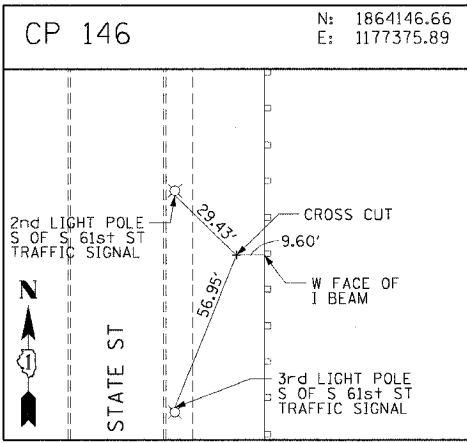
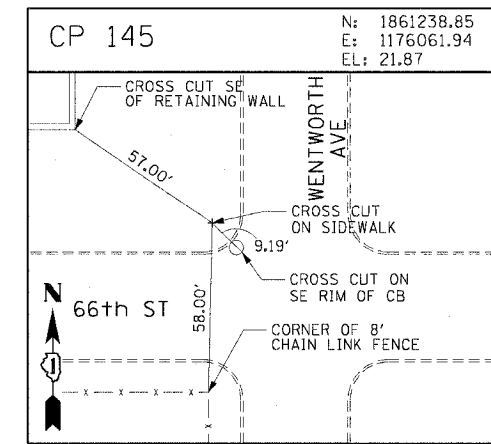
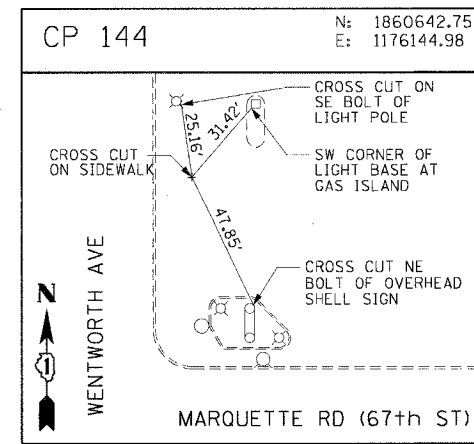
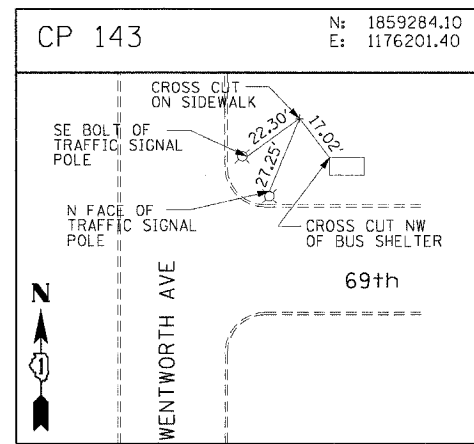
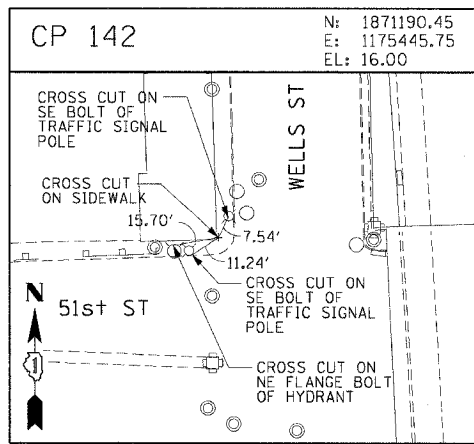
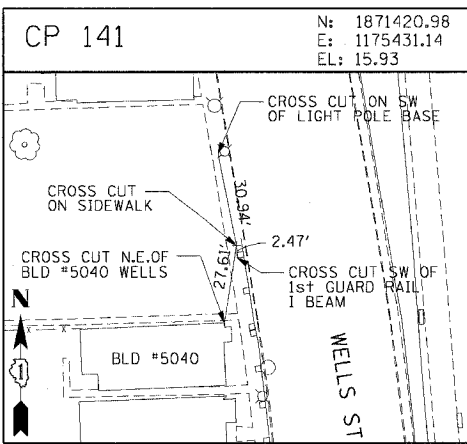
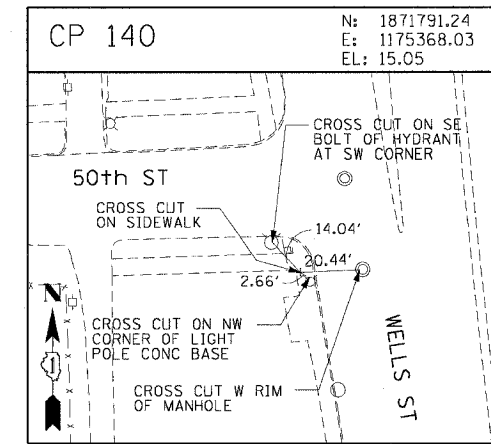
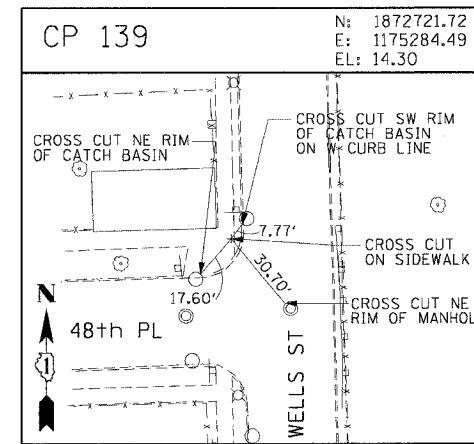
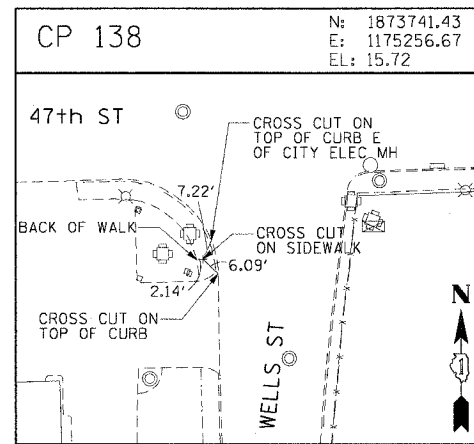
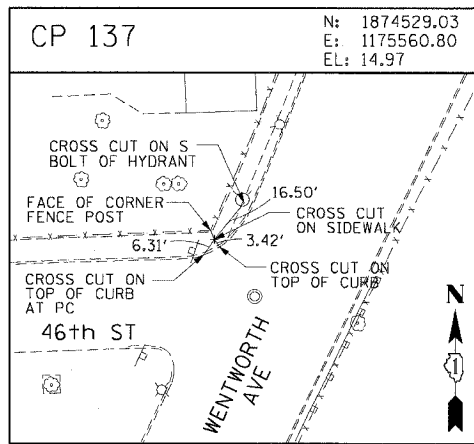
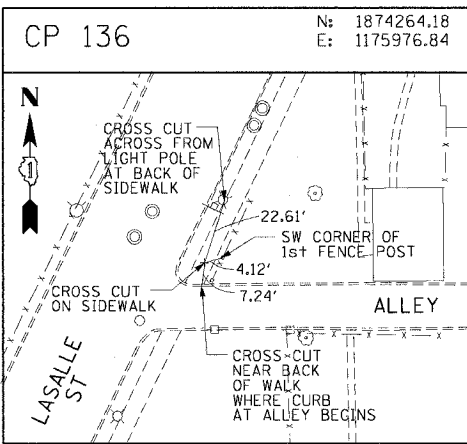


F.A.I. RTE.	SECTION	COUNTY	TOTAL SHEETS	SHEET NO.
90/94	*	COOK	312	33
STA.		TO STA.		
FED. ROAD DIST. NO. 1		ILLINOIS FED. AID PROJECT		
60A62		• (1919.15, 2021-922 PT1 & PT2) R-1		



CTE | AECOM

REVISIONS	
NAME	DATE

ALT-10
ILLINOIS DEPARTMENT OF TRANSPORTATION
F.A.I. 90/94 (DAN RYAN EXPRESSWAY)
63RD STREET TO GARFIELD BLVD (NB LOCAL LANES)
SURVEY TIES AND CONTROL POINTS
SCALE: 1"=30'
DATE: June 9, 2006
DRAWN BY: MRK
CHECKED BY: JAL

6/9/2006 9:35:55 AM