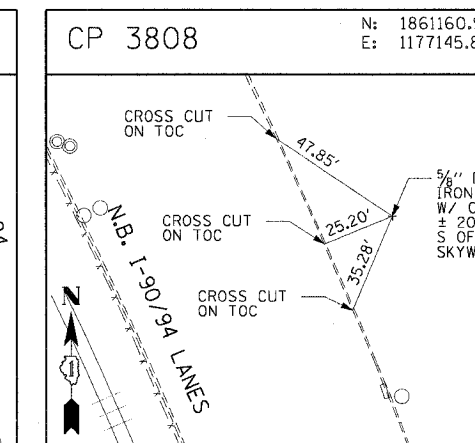
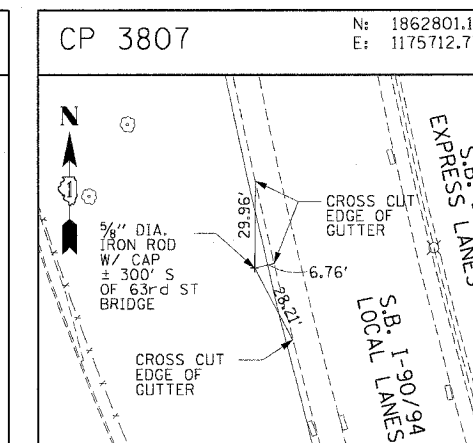
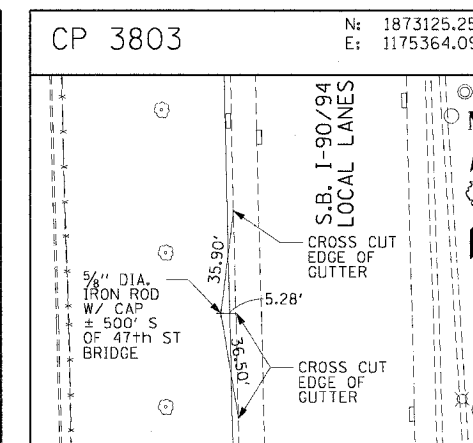
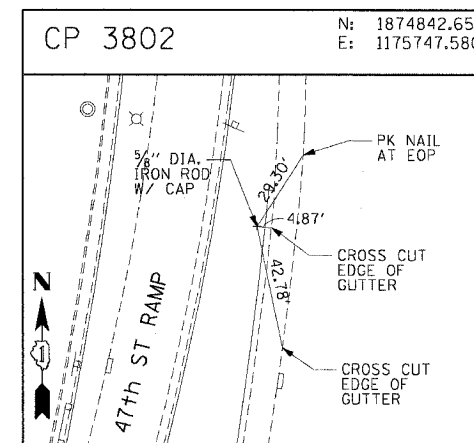
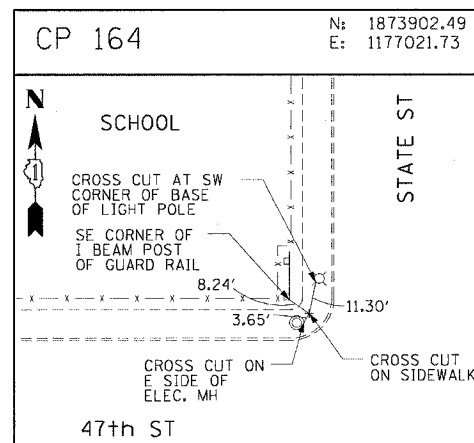
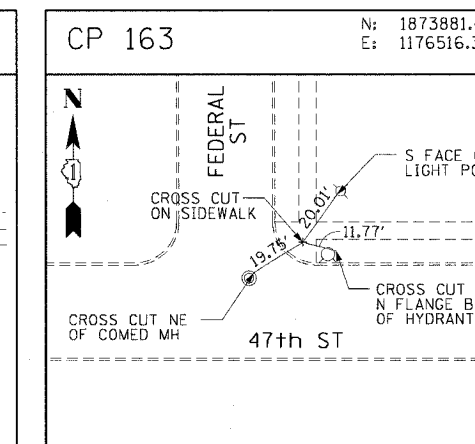
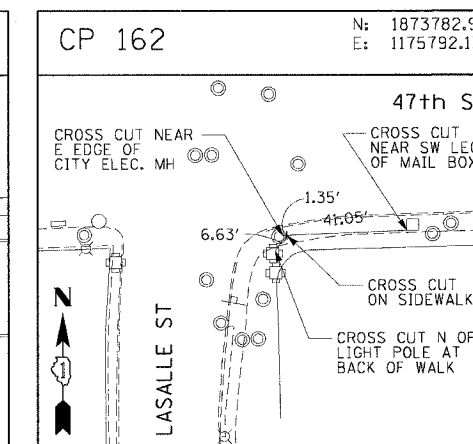
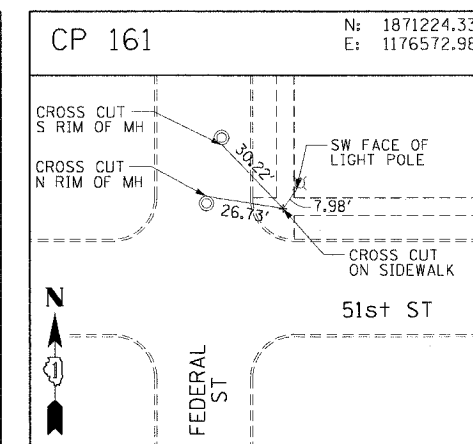
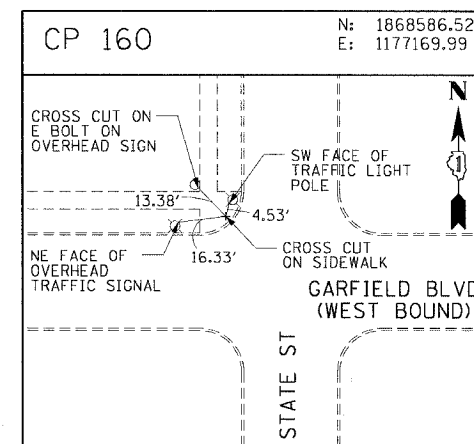
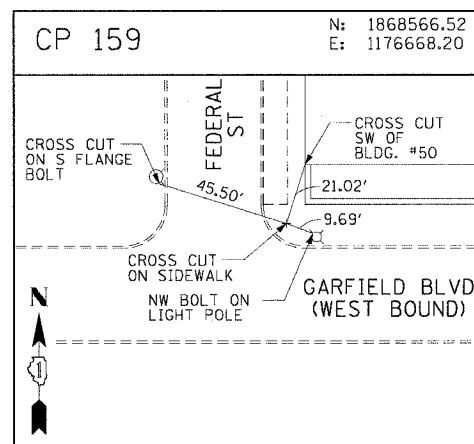
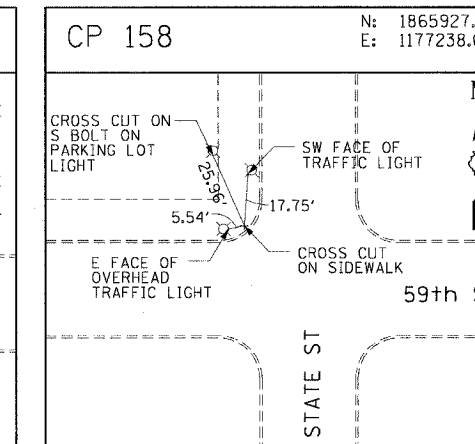
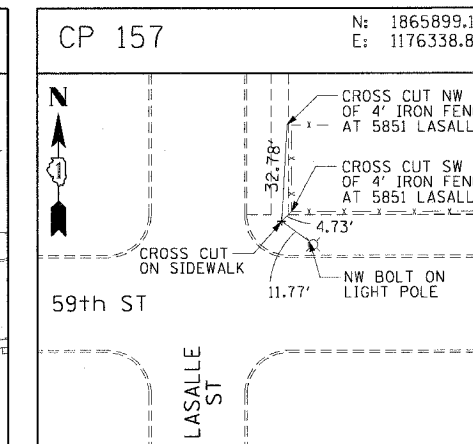
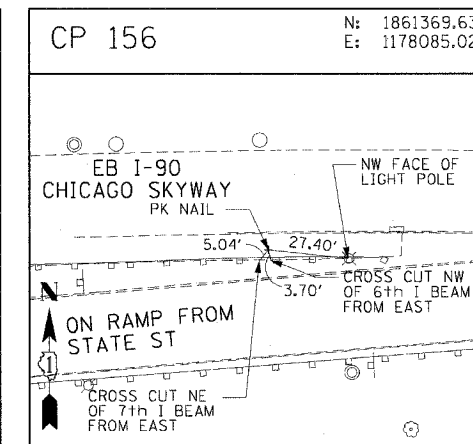
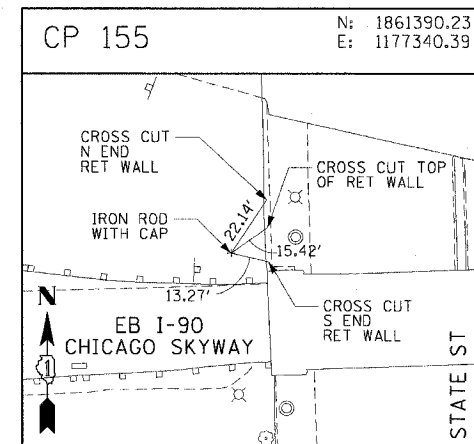
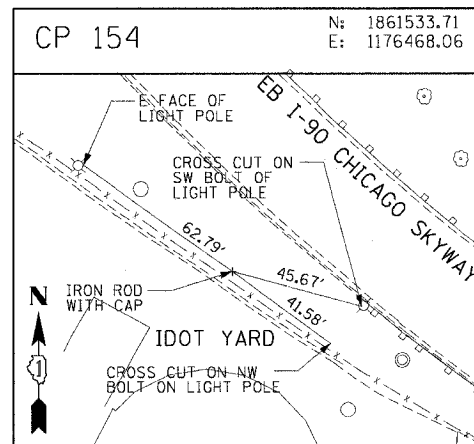


F.A.I. RT.	SECTION	COUNTY	TOTAL SHEETS	SHEET NO.
90/94		COOK	312	34
STA.		TO STA.		
60A62		ILLINOIS FED. AID PROJECT		
		(1919.15, 2021-922 PT1 & PT2) R-1		



CTE | AECOM

REVISIONS	
NAME	DATE

ILLINOIS DEPARTMENT OF TRANSPORTATION
 F.A.I. 90/94 (DAN RYAN EXPRESSWAY)
 63RD STREET TO GARFIELD BLVD (NB LOCAL LANES)
 SURVEY TIES AND CONTROL POINTS

SCALE: 1"=30'
 DATE: June 9, 2006

DRAWN BY: MRK
 CHECKED BY: JAL

ALT-11
 9/13/05 AM
 6/5/2006