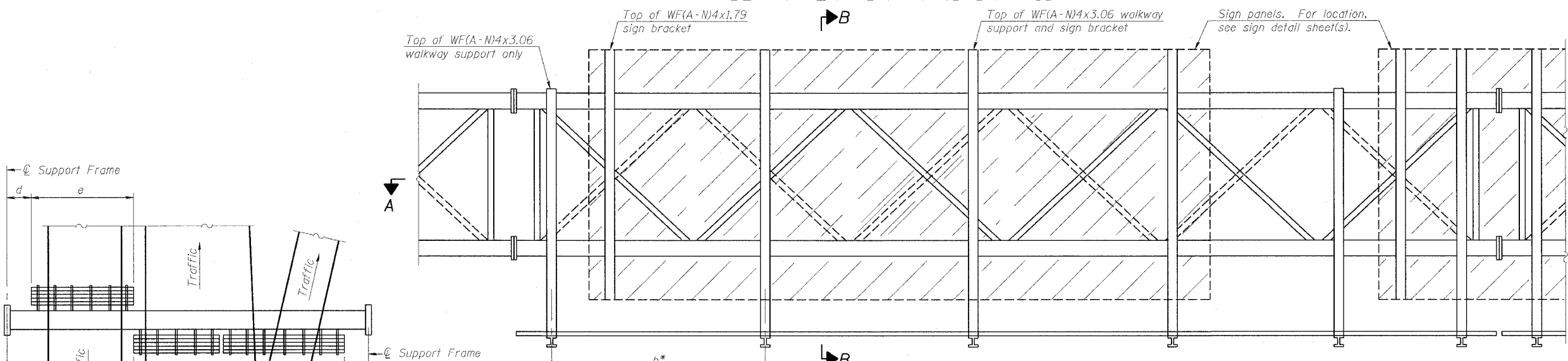
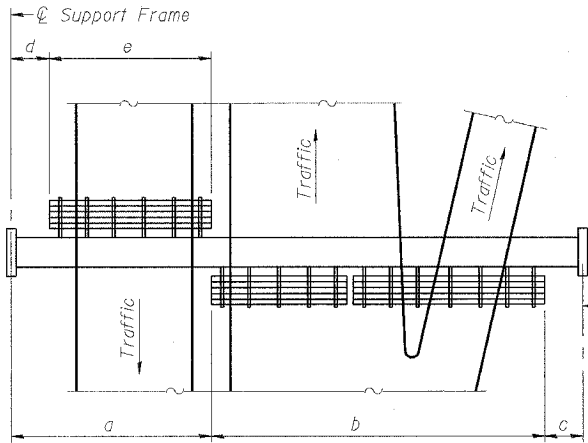


STATE OF ILLINOIS
DEPARTMENT OF TRANSPORTATION

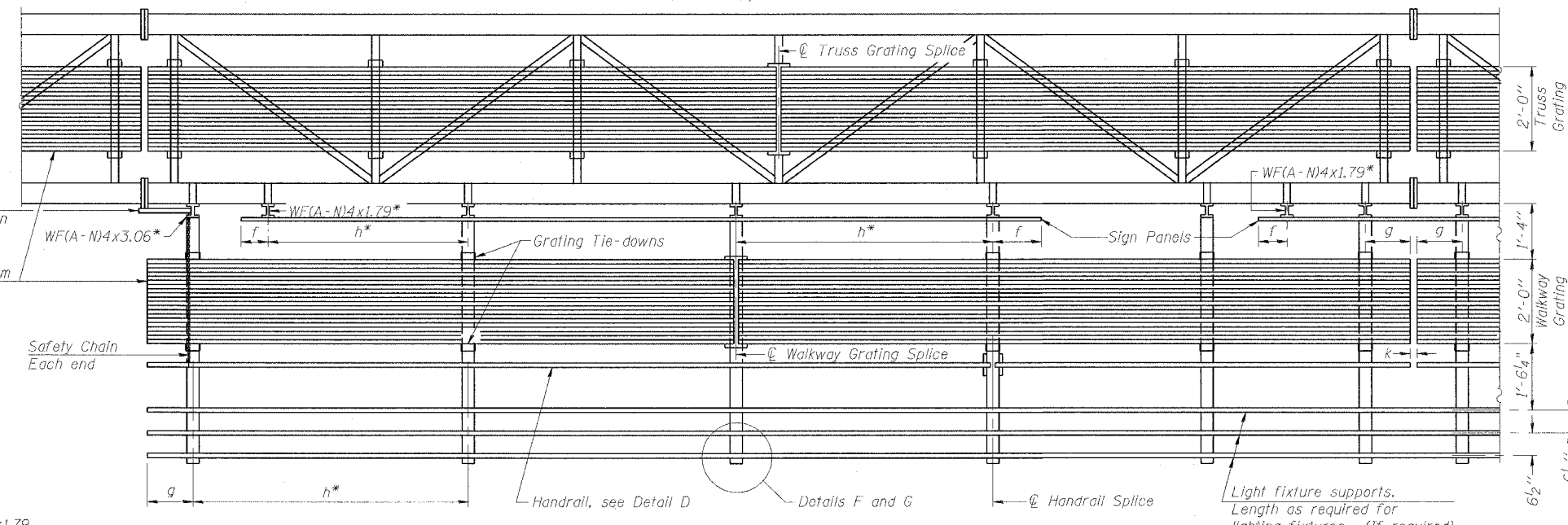
ROUTE NO.	SECTION	COUNTY	TOTAL SHEETS	SHEET NO.
F.A.I. RT. 90/94		COOK	312	148
FED. ROAD DIST. NO. 1		ILLINOIS	FED. AID PROJECT	
				60A62



TYPICAL FRONT ELEVATION
With lights and handrail omitted for clarity.
For Section B-B, see Base Sheet OS-A-10.



PLAN
WALKWAY AND HANDRAIL SKETCH
(Road plan beneath truss varies)



SECTION A-A

BRACKET TABLE

Sign Width		Number Brackets Required
Greater Than	Less Than or Equal To	
	8'-0"	2
8'-0"	14'-0"	3
14'-0"	20'-0"	4
20'-0"	26'-0"	5
26'-0"	32'-0"	6

** Alternate angle for safety chain attachment

Standard Aluminum Grating, see Details T and W

Walkway and Truss Grating width dimensions are nominal and may vary ± 1/2" based on available standard widths.

Notes:

- * Space walkway brackets WF(A-N)4x3.06 and sign brackets WF(A-N)4x1.79 for efficiency and within limits shown:
- $f = 12"$ maximum, 4" minimum (End of sign to ϕ of nearest bracket)
- $g = 12"$ maximum, 4" minimum (End of walkway grating to ϕ of nearest support bracket)
- $h = 6'-0"$ maximum (ϕ to ϕ sign and/or walkway support brackets, WF(A-N)4x1.79 or WF(A-N)4x3.06)
- $k = 2"$ maximum gap between adjacent walkway grating sections and handrail ends
- ** If walkway bracket at safety chain location is behind sign, add angle to bracket, see Alternate Safety Chain Attachment on Base Sheet OS-A-11.

Handrail and walkway shall span a minimum of three brackets between spans and/or gap joints. Place all sign and walkway brackets as close to panel points as practical. Grating, handrail and light support splices placed as needed.

Truss grating to facilitate inspection shall run full length (center to center of support frames) ± 12" on overhead trusses. Cost of truss grating is included in "Overhead Sign Structure".

For Details T and W, Section B-B and Grating Splice Details, see Base Sheet OS-A-10.
For Details D, F, G and P and Handrail Splice Details, see Base Sheet OS-A-11.

Structure Number	Station	a	b	c	d	e	Walkway Grating and Handrail Lengths
IS0161094L058.8	4421+30.00	7.87'	42.0'	14.13'	---	---	46.0'

DESIGNED	- JSS
CHECKED	- RDP
DRAWN	- JSS
CHECKED	- RDP

EXAMINED		20
PASSED		
ENGINEER OF STRUCTURAL SERVICES		
ENGINEER OF BRIDGES AND STRUCTURES		

NUMBER	REVISION	DATE

OSS-21

**OVERHEAD SIGN STRUCTURES
ALUMINUM WALKWAY DETAILS**

F.A.I. 90/94 (DAN RYAN EXPRESSWAY)
63RD STREET TO GARFIELD BLVD (NB LOCAL LANES)
PROPOSED IMPROVEMENT
63RD STREET TO GARFIELD BLVD

F:\P\06\CONTRACTS\18 0 19\STAT\CH\18A\Signing\SS8222A.dgn 6/2/2006 11:02:29 AM