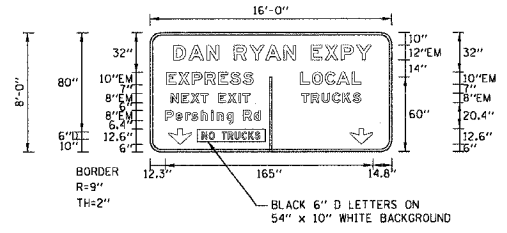


SIGN DETAIL



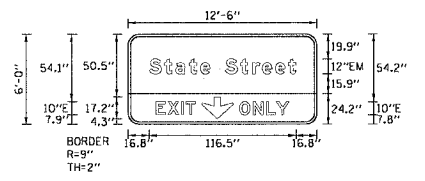
SIGN NUMBER	name
WIDTH x HEIGHT	16'-0" x 8'-0"
BORDER WIDTH	2"
CORNER RADIUS	9"
MOUNTING	OVERHEAD
BACKGROUND	TYPE: REFLECTIVE
LEGEND/BORDER	COLOR: GREEN
	TYPE: REFLECTIVE
	COLOR: WHITE

SYMBOL	X	Y	WID	HT
ARROW	14.9	6	18.3	12.6
ARROW	158.9	6	18.3	12.6

DIMENSIONS ARE IN INCHES, TENTHS LETTER LOCATIONS ARE PANEL EDGE TO LOWER LEFT CORNER

LETTER POSITIONS (X)												LENGTH SERIES, SIZE			
D	A	N	R	Y	A	N	E	X	P	Y				157.2	EM12
18.8	30.9	45.4	54.9	66.9	79	91.8	106.3	115.9	127.9	139.2	152	164			
E	X	P	R	E	S	S								68.8	EM10
13.3	22.7	33.4	43.9	54.4	63.8	73.9									
L	O	C	A	L										48.5	EM10
119.5	128.9	139.3	148.6	160.7											
N	E	X	T		E	X	I	T						63	EM8
16.5	24.9	32.5	40.5	46.3	54.3	61.9	70.4	73.6							
T	R	U	C	K	S									47.1	EM8
120.4	128	136.4	144.9	152.9	161										
P	e	r	s	h	i	n	g		R	d				75.4	EM8/6
12.3	20.6	28.2	33.1	40.6	48.8	53.4	61	66.1	74.1	82.6					
N	O		T	R	U	C	K	S						45.9	D6
41.5	47	51.2	57.2	62	67.4	72.9	78.1	83.3							

SIGN DETAIL

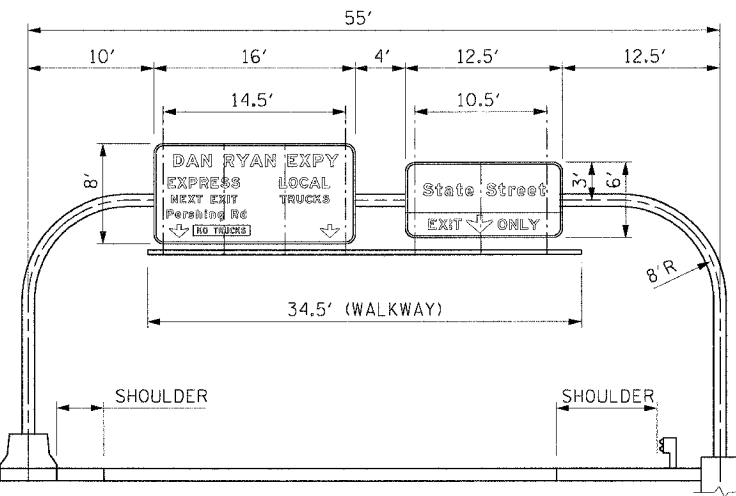
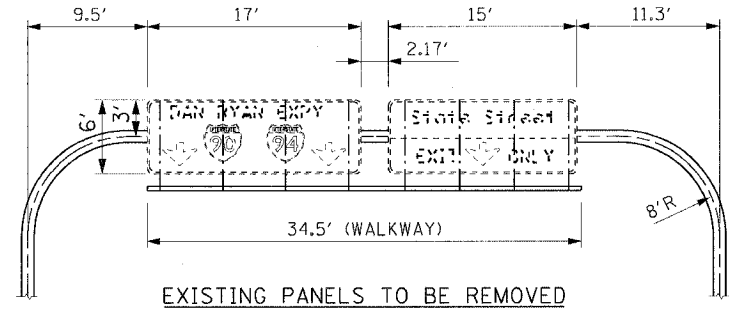


SIGN NUMBER	name
WIDTH x HEIGHT	12'-6" x 6'-0"
BORDER WIDTH	2"
CORNER RADIUS	9"
MOUNTING	OVERHEAD
BACKGROUND	TYPE: REFLECTIVE
LEGEND/BORDER	COLOR: GREEN
	TYPE: REFLECTIVE
	COLOR: WHITE

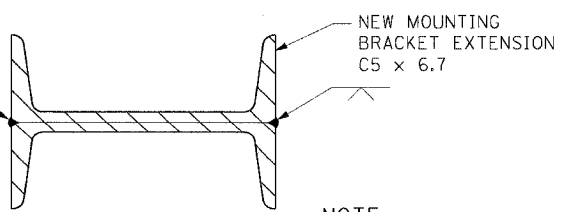
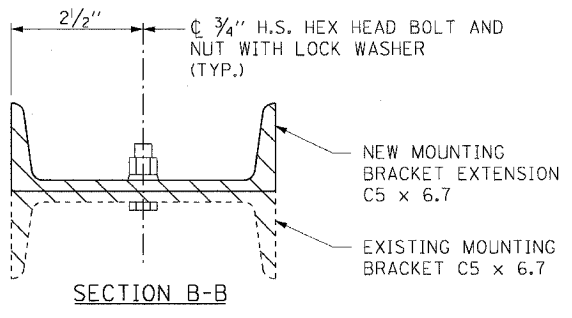
SYMBOL	X	Y	WID	HT
ARROW	58.4	4.4	25	17.2

DIMENSIONS ARE IN INCHES, TENTHS LETTER LOCATIONS ARE PANEL EDGE TO LOWER LEFT CORNER

LETTER POSITIONS (X)												LENGTH SERIES, SIZE				
S	t	a	t	e		S	t	r	e	e	t				116.5	EM12/9
16.7	28.9	37.6	48.6	57.3	65	77	89.1	98.9	106.6	117	127.2					
E	X	I	T											31.2	E10	
22.2	31.6	42.3	46.1													
O	N	L	Y											39.4	E10	
88.4	99.2	109.8	117.8													

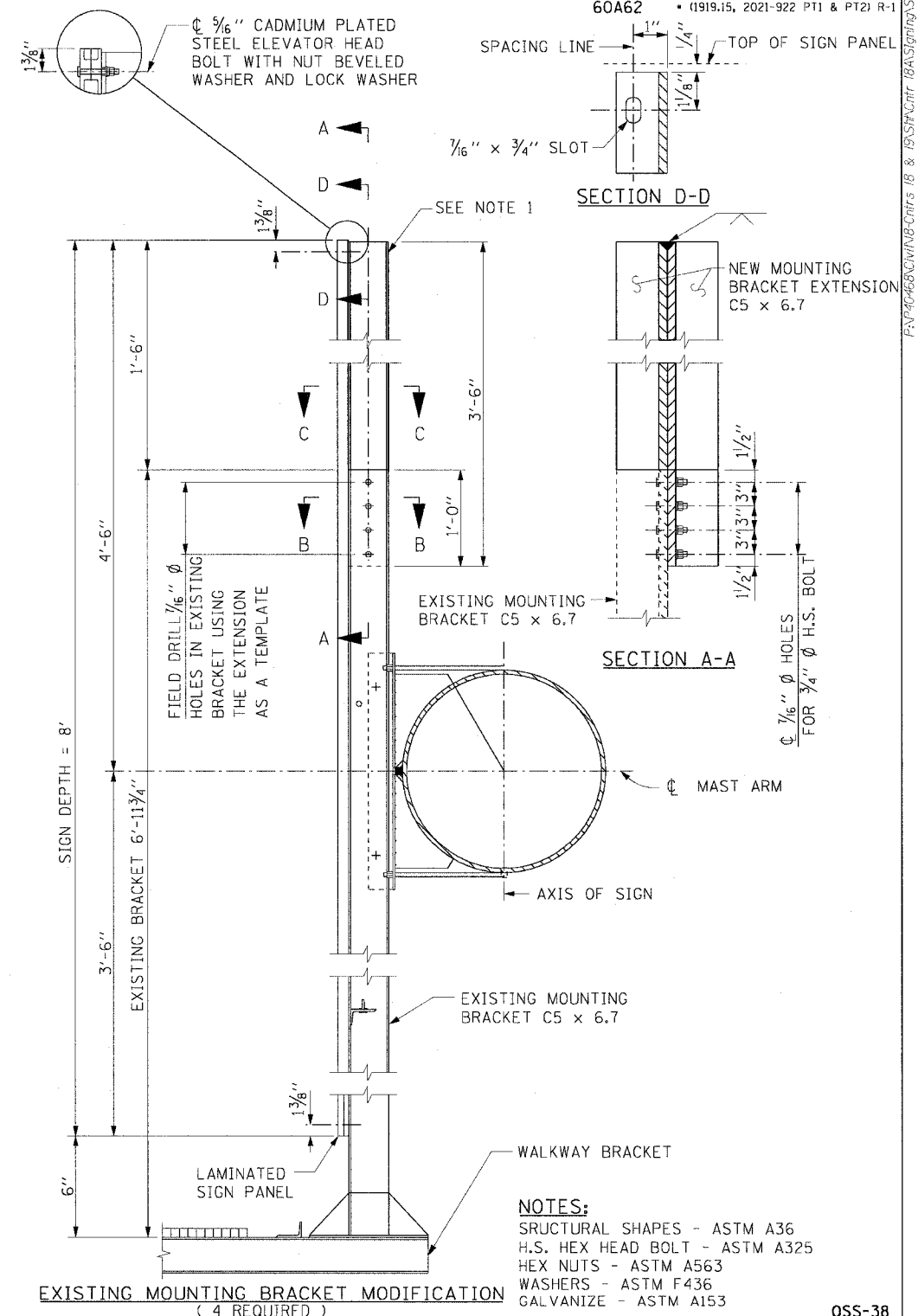


MOUNTING DETAIL FOR PANEL REPLACEMENT
OVERHEAD SIGN TUBULAR FRAME
3,252.00 FEET DOWN STREAM FROM
OVERHEAD SIGN STRUCTURE 11-WB_SKY1
STATION 6000+50.00 W.B. SKYWAY
LOOKING WEST



NOTE:
THE COST OF FURNISHING, FABRICATING
FINISHING AND INSTALLING FOUR (4)
BRACKET EXTENSION INCLUDING FIELD
DRILLING IS INCLUDED IN THE COST OF
FURNISHING AND MOUNTING THE NEW
SIGN PANEL.

F.A.I. RTE.	SECTION	COUNTY	TOTAL SHEETS	SHEET NO.
90/94	•	COOK	312	165
STA.	TO STA.			
FED. ROAD DIST. NO. 1	ILLINOIS	FED. AID PROJECT		
60A62	• (1919.15, 2021-922 PT1 & PT2) R-1			



NOTES:
STRUCTURAL SHAPES - ASTM A36
H.S. HEX HEAD BOLT - ASTM A325
HEX NUTS - ASTM A563
WASHERS - ASTM F436
GALVANIZE - ASTM A153

REVISIONS	
NAME	DATE

ILLINOIS DEPARTMENT OF TRANSPORTATION
F.A.I. 90/94 (DAN RYAN EXPRESSWAY)
63RD STREET TO GARFIELD BLVD (NB LOCAL LANES)

PERMANENT SIGN PANEL MOUNTING DETAILS
PROPOSED PANEL REPLACEMENT
EXISTING SKYWAY TUBULAR SIGN STRUCTURE
SCALE: NONE DRAWN BY: JSS
DATE: June 9, 2006 CHECKED BY: RDP