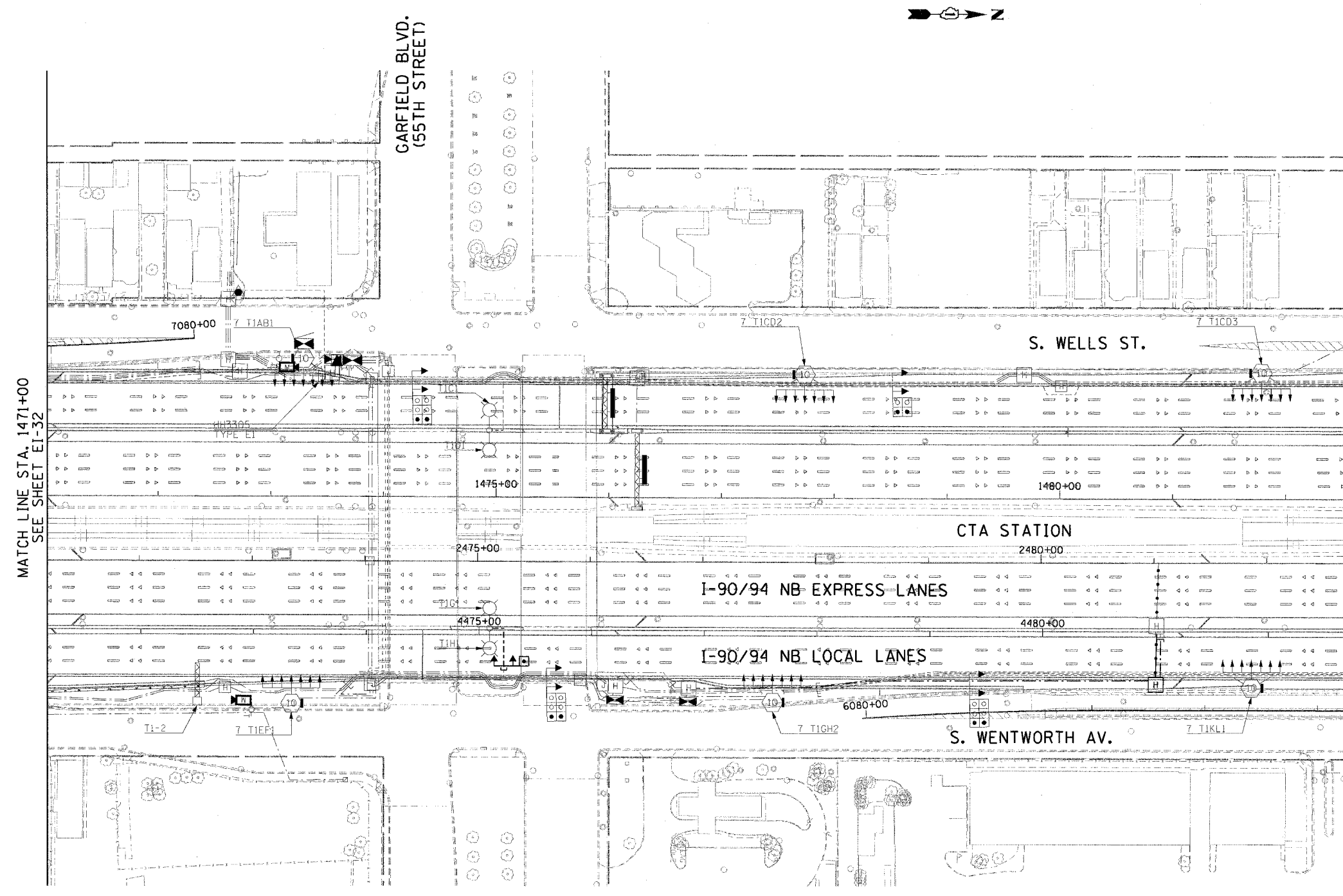
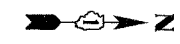


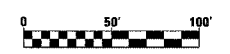
F.A.I. RTE.	SECTION	COUNTY	TOTAL SHEETS	SHEET NO.
90/94		COOK	312	184
STA. 1471+00.00		TO STA. 1482+50.00		
FED. ROAD DIST. NO. 1 ILLINOIS FED. AID PROJECT				
60A62 • (1919.15, 2021-922 PT1 & PT2) R-1				



MATCH LINE STA. 1471+00
SEE SHEET EI-32

NO WORK PROPOSED
ON THIS SHEET

CTE | AECOM



EI-33

REVISIONS	
NAME	DATE

ILLINOIS DEPARTMENT OF TRANSPORTATION
F.A.I. 90/94 (DAN RYAN EXPRESSWAY)
63RD STREET TO GARFIELD BLVD (NB LOCAL LANES)

ELECTRICAL INFRASTRUCTURE PLAN

SCALE: 1"=50'
DATE: June 9, 2006
DRAWN BY: HAR
CHECKED BY: JPC

A:\040468\elec\NB-entrs_18 & 19\contract\150\SPV\15060332.dwg