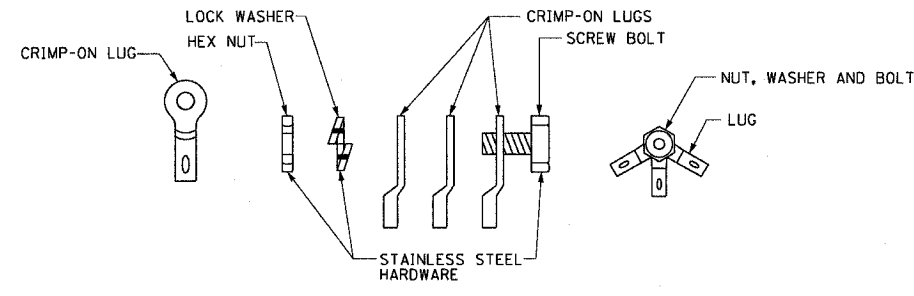
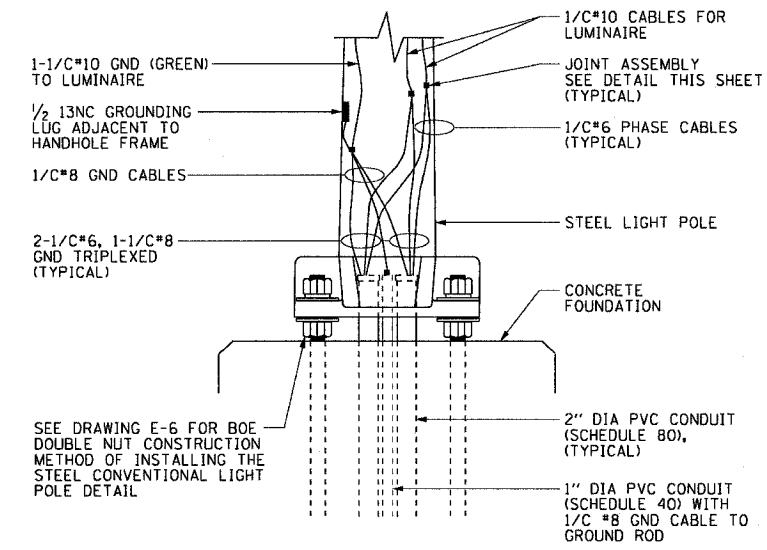


F.A.I. RTE.	SECTION	COUNTY	TOTAL SHEETS	SHEET NO.
90/94	*	COOK	312	199
STA. -		TO STA. -		
FED. ROAD DIST. NO. 1 ILLINOIS FED. AID PROJECT				
60A62 • (1919.15, 2021-922 PT1 & PT2) R-1				



JOINT ASSEMBLY DETAILS
NOT TO SCALE



WALL MOUNTED POLE BASE WIRING DETAIL
NOT TO SCALE

NOTES:

1. SEE DRAWINGS E-1 AND E-2 FOR CDOT ELECTRICAL GENERAL NOTES, SYMBOLS AND ABBREVIATIONS.
2. SEE PLAN DRAWING E-3 FOR THE PROPOSED CONDUIT ROUTING.

CTE | AECOM

REVISIONS	
NAME	DATE

ILLINOIS DEPARTMENT OF TRANSPORTATION
F.A.I. 90/94 (DAN RYAN EXPRESSWAY)
63RD STREET TO GARFIELD BLVD (NB LOCAL LANES)
MISCELLANEOUS ELECTRICAL DETAILS

SCALE: AS SHOWN DRAWN BY: HAR
DATE: June 9, 2006 CHECKED BY: JPC

P:\p4468\elec\18-cifs\18 & 19\contract\BGS\17\060525.rvt 08/02/2006 02:47:05 PM