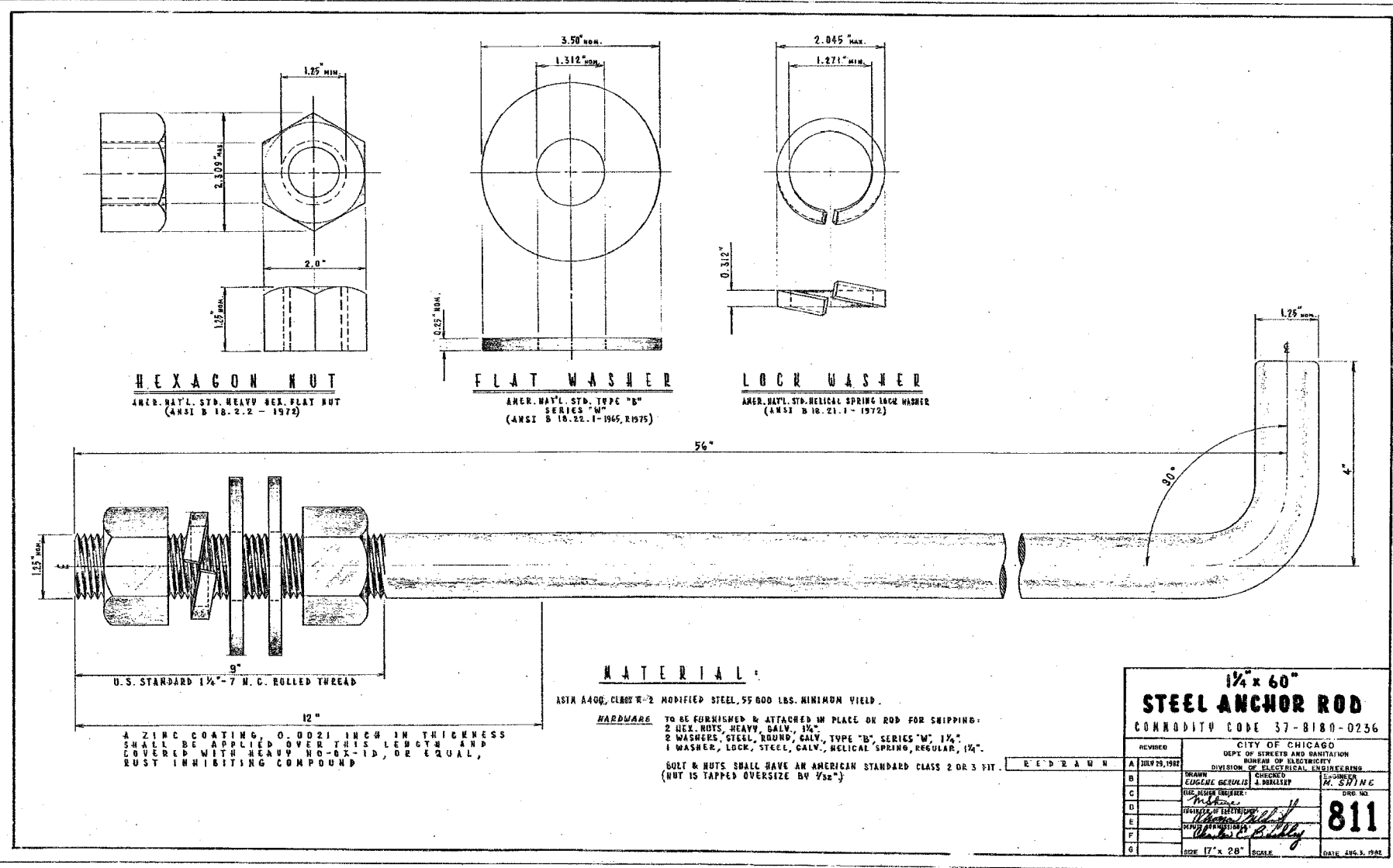


F.A.I. RTE.	SECTION	COUNTY	TOTAL SHEETS	SHEET NO.
90/94	*	COOK	312	201
STA.		TO STA.		
FED. ROAD DIST. NO. 1		ILLINOIS FED. AID PROJECT		
60A62		* (1919.15, 2021-922 PT1 & PT2) R-1		

**NOTES:**

- THIS IS A STANDARD DRAWING MADE BY THE CITY OF CHICAGO, DEPARTMENT OF STREETS AND SANITATION, BUREAU OF ELECTRICITY. THIS DRAWING IS INCLUDED FOR THE CONVENIENCE OF THE CONTRACTOR.



**HEXAGON NUT**  
AMER. NAT'L. STD. HEAVY HEX. FLAT NUT  
(ANSI B 18.2.2 - 1972)

**FLAT WASHER**  
AMER. NAT'L. STD. TYPE "B"  
SERIES "W"  
(ANSI B 18.22.1-1965, R1575)

**LOCK WASHER**  
AMER. NAT'L. STD. HELICAL SPRING LOCK WASHER  
(ANSI B 18.21.1 - 1972)

U.S. STANDARD 1 1/4" - 7 N.C. ROLLED THREAD

A ZINC COATING, 0.0021 INCH IN THICKNESS SHALL BE APPLIED OVER THIS LENGTH AND COVERED WITH HEAVY NO-OX-ID, OR EQUAL, RUST INHIBITING COMPOUND

**MATERIAL:**

ASTM A490, CLASS "2" MODIFIED STEEL, 55 000 LBS. MINIMUM YIELD.

**HARDWARE** TO BE FURNISHED & ATTACHED IN PLACE ON ROD FOR SHIPPING:  
2 HEX. NUTS, HEAVY, GALV., 1 1/4"  
2 WASHERS, STEEL, ROUND, GALV., TYPE "B", SERIES "W", 1 1/4"  
1 WASHER, LOCK, STEEL, GALV., HELICAL SPRING, REGULAR, 1 1/4"

NUTS & NUTS SHALL HAVE AN AMERICAN STANDARD CLASS 2 OR 3 FIT.  
(NUT IS TAPPED OVERSIZE BY 1/32")

**1 1/4" x 60"**  
**STEEL ANCHOR ROD**  
CONMODITY CODE 37-8180-0236

REVISED	CITY OF CHICAGO DEPT. OF STREETS AND SANITATION BUREAU OF ELECTRICITY DIVISION OF ELECTRICAL ENGINEERING	
A	JULY 29, 1992	DRAWN BY: <i>E. J. SWINEY</i>
B		CHECKED BY: <i>R. SWINEY</i>
C		DESIGNED BY: <i>R. SWINEY</i>
D		APPROVED BY: <i>[Signature]</i>
E		DATE: <i>6/9/06</i>
F		SCALE: <i>AS SHOWN</i>
G		DATE: <i>6/9/06</i>

CTE | AECOM

REVISIONS		ILLINOIS DEPARTMENT OF TRANSPORTATION F.A.I. 90/94 (DAN RYAN EXPRESSWAY) 63RD STREET TO GARFIELD BLVD (NB LOCAL LANES)
NAME	DATE	
		STANDARD BOE DETAILS

SCALE: NOT TO SCALE  
DATE: June 9, 2006  
DRAWN BY: HAR  
CHECKED BY: JPC

06/02/2006 02:54:08 PM