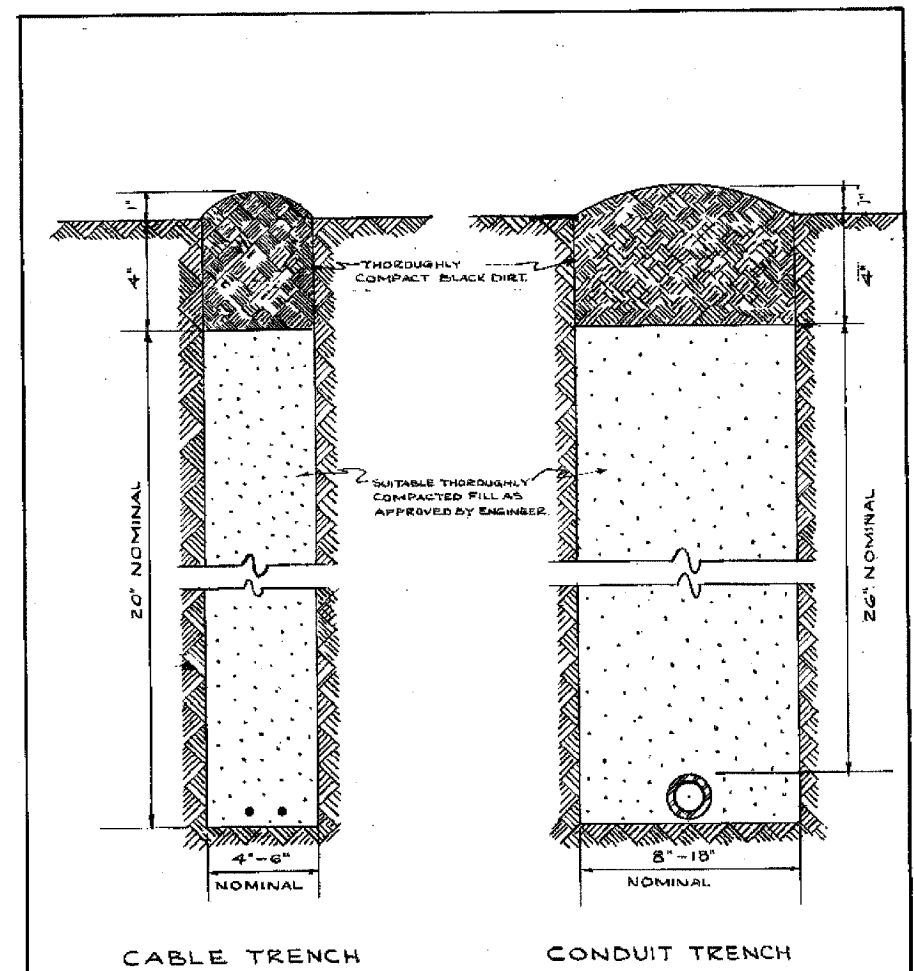
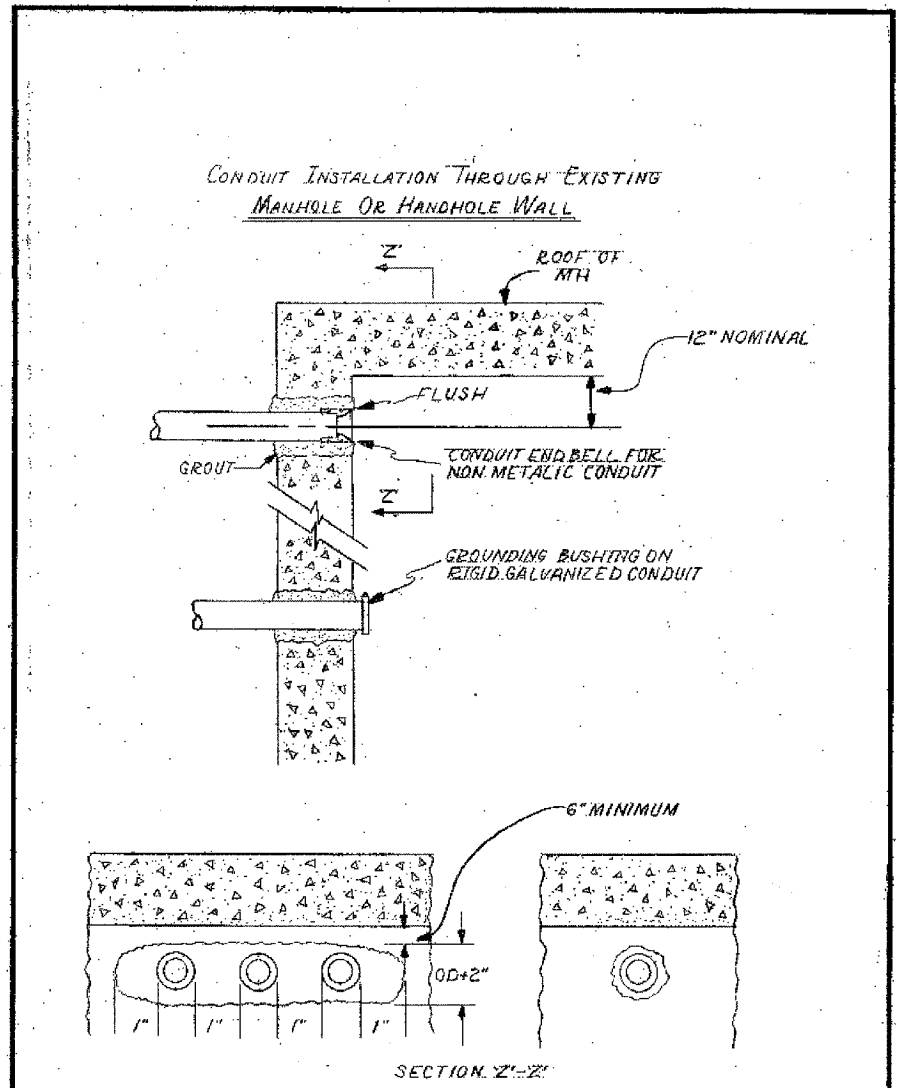


F.A.I. RTE.	SECTION	COUNTY	TOTAL SHEETS	SHEET NO.
90/94		COOK	312	207
STA.	TO STA.			
FED. ROAD DIST. NO. 1		ILLINOIS	FED. AID PROJECT	
60A62		(1919.15, 2021-922 PT1 & PT2) R-1		



**NOTE**  
 EXCESS SOIL FROM TRENCH TO BE COMPLETELY REMOVED FROM SITE AS SOON AS PRACTICABLE.  
 BLACK DIET TO BE TAMPED & THOROUGHLY COMPACTED AS SHOWN.

STANDARD METHOD FOR BACKFILLING CABLE & CONDUIT TRENCHES IN SODDED PARKWAY & LAWNS			
CITY OF CHICAGO DEPT. OF STREETS & SANITATION DIVISION OF ELECTRICAL ENGINEERING			
REVISION	DRAWN	CHECKED	ENGINEER
A	W.E. HAEP	M. J. HANE	J. O'CONNOR
B	ENGINEER IN CHARGE		DRG. NO.
C	Supt. of Const.		579
D	Supt. of Const.		
E	Supt. of Const.		
F	Supt. of Const.		
G	Supt. of Const.		
H	SIZE: 8 1/2" x 11"	SCALE: 1/4"	DATE: 7-14-61



OPENING THROUGH WALL TO BE KEPT TO MINIMUM SIZE TO ADMIT CONDUIT AND SUFFICIENT GROUT TO ASSURE SEALING WALL.

INSTALLATION METHOD OF INSTALLING CONDUIT THRU MANHOLE WALL

**CITY OF CHICAGO**  
 DEPT. OF STREETS AND SANITATION  
 BUREAU OF ELECTRICITY  
 DIVISION OF ELECTRICAL ENGINEERING

DRAWN A.M. JOHNSON	CHECKED R. SIEKOWSKI	ENGINEER R.L. MARTIN
 THOMAS KILDUFF ENGINEER OF ELECTRICITY		DRG. NO. <b>814</b>
 CHARLES E. BUNKLEY SUPERVISOR OF ELECTRICITY		SCALE 8 1/2" X 11"

**NOTES:**  
 1. THIS IS A STANDARD DRAWING MADE BY THE CITY OF CHICAGO, DEPARTMENT OF STREETS AND SANITATION, BUREAU OF ELECTRICITY. THIS DRAWING IS INCLUDED FOR THE CONVENIENCE OF THE CONTRACTOR.

CTE | AECOM

REVISIONS	
NAME	DATE

ILLINOIS DEPARTMENT OF TRANSPORTATION  
 F.A.I. 90/94 (DAN RYAN EXPRESSWAY)  
 63RD STREET TO GARFIELD BLVD (NB LOCAL LANES)

**STANDARD BOE DETAILS**

SCALE: NOT TO SCALE  
 DATE: June 9, 2006  
 DRAWN BY: HAR  
 CHECKED BY: JPC

05/02/2006 02:54:21 PM  
 P:\40465\electrical\cns 18 & 19\contract 1804\180432.dwg