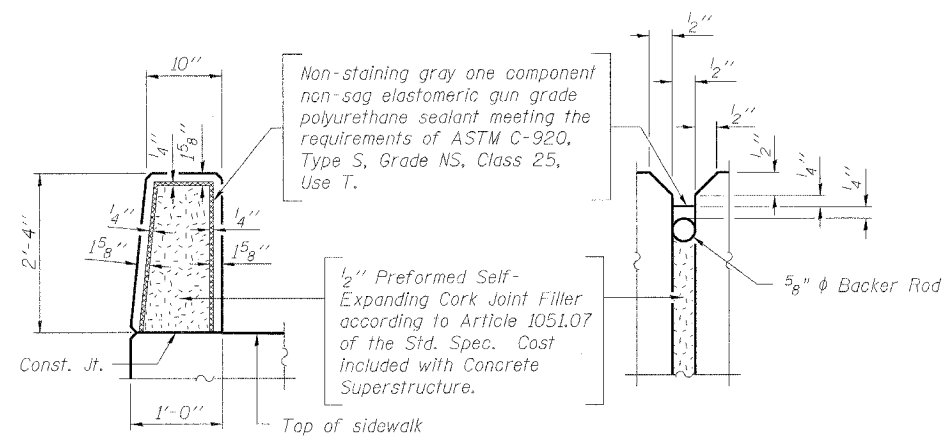


**INSIDE ELEVATION OF PARAPET**

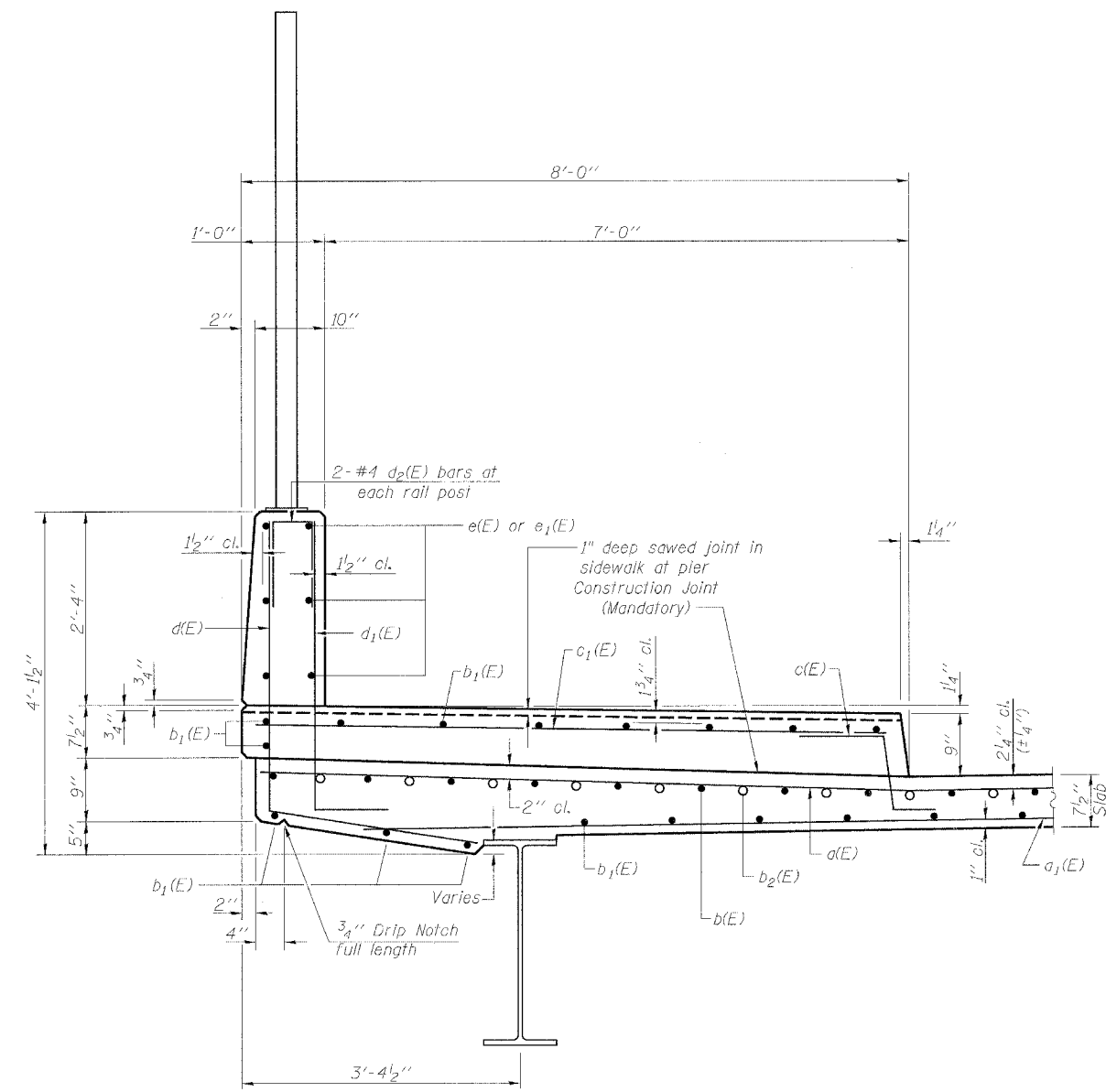
**SUPERSTRUCTURE  
BILL OF MATERIAL**

Bar	No.	Size	Length	Shape	
a(E)	456	#5	38'-4"	—	
a <sub>1</sub> (E)	513	#5	25'-4"	—	
b(E)	375	#5	24'-6"	—	
b <sub>1</sub> (E)	348	#5	30'-0"	—	
b <sub>2</sub> (E)	74	#6	37'-10"	—	
c(E)	228	#5	2'-5"	└	
c <sub>1</sub> (E)	228	#5	7'-9"	—	
d(E)	228	#4	5'-10"	L	
d <sub>1</sub> (E)	228	#6	4'-4"	L	
d <sub>2</sub> (E)	56	#4	2'-6"	Π	
e(E)	72	#4	15'-10"	—	
e <sub>1</sub> (E)	24	#4	8'-2"	—	
Reinforcement Bars, Epoxy Coated				Pound	62,240
Concrete Superstructure				Cu. Yd.	275.8
Protective Coat				Sq. Yd.	1021
Bridge Deck Grooving				Sq. Yd.	716

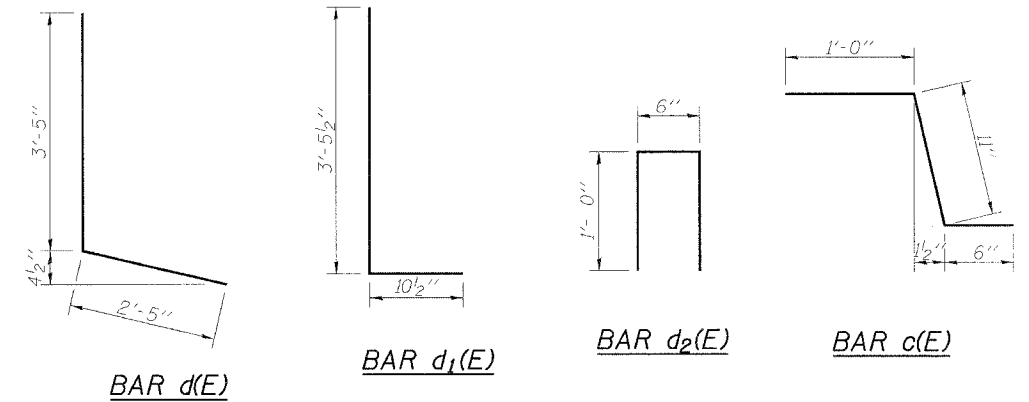
Reinforcement bars designated (E) shall be epoxy coated.



**PARAPET JOINT DETAILS**



**SECTION THRU PARAPET & SIDEWALK**  
(Near Pier)



**NOTE**  
Bridge mounted sign structures shall be installed prior to the pedestrian railing. See Sheets 23 thru 26 of 26.

 Excellence through Ownership 200 West Front Street Wheaton, IL 60187	ILLINOIS DEPARTMENT OF TRANSPORTATION
	SUPERSTRUCTURE PARAPET AND DETAILS FOSTER AVE. OVER I-94 (EDENS EXPRESSWAY) FAU RTE 1360 - SECTION 0101BR-2 COOK COUNTY STATION 100+00 STRUCTURE NO. 016-0246
	DATE: 4/30/2006 DRAWN BY: JMT CHECKED BY: BLB